

# LIGHTHOUSE

**HELPING HANDS FOR TURKEY  
DONATION CAMPAIGN IN THE UAE**

**2M GLOBALSHIPPING ALLIANCE  
COMING TO AN END**

**THE ART OF  
SUPPLY CHAIN**



MARCH - APRIL 2023

BI-MONTHLY PUBLICATION OF CSS GROUP

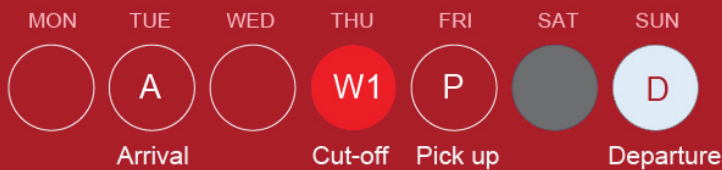


# From Amsterdam to Dubai

Airfreight console 2023



## Weekly flight from Amsterdam to Dubai



## Transit times

- Cargo cut off Thursday
- Departure - Sunday, Arrival - Tuesday
- 48 hrs Transit
- Door delivery within 24 hrs of Arrival .

## Documentation Checklist:

- Original commercial invoice with wet ink stamp and signature.
- Original packing list
- Pro forma invoice not allowed
- Mandatory information on commercial invoice:
  - HS code
  - Description
  - Country of Origin
  - Value of the goods

## General cargo service

- General cargo only\*
- Daily service on request subject to space

*\*Please contact us for special requirements and/or commodities*

Check with us for more worldwide destinations



# Consolidated Shipping Services L.L.C.

Dubai, United Arab Emirates

+971 4 883 1 303, Ext:2154

airimportpricing@cssdubai.com

www.cssgroupsite.com



T S KALADHARAN

## Chairman's Message

A humanitarian crisis is unfolding in Turkey and Syria after the deadly earthquakes rocked and left a trail of destruction. Thousands of buildings have collapsed, and millions of people have been displaced. Thousands of Turkish and Syrian citizens grapple with a future that has left them with no home or livelihood. Despite receiving humanitarian assistance from several countries around the globe, Turkey and Syria faces enormous recovery challenges ahead.

### Extending Helping Hands for Turkey

CSS has always placed Corporate Social Responsibility as integral to our values. We have always been at the forefront when disaster strikes in this region and beyond. We were privileged to work along the patronage of the Turkish Consulate and Turkish Business Council. We stepped in by providing our warehouse and staff at CSS Homeward Bound warehouse in Al Quoz, Dubai, as part of the disaster relief program.

The collection drive was extended to three days with a massive outpouring of relief materials. With the massive task of collecting, sorting, and organizing materials, we witnessed the heart and spirit of UAE residents. Cutting all barriers of race, age, and religion, people arrived in groups at the CSS warehouse to extend a hand of support to our Turkish brothers, sisters, and little children.

### The Wood-Wide Web

I recently read a story about the neural networks of trees. There's evidence that trees can communicate through a vast, underground network of fungal connections called mycorrhizal networks. This term is often called 'the wood-wide web.'

Mycorrhiza is everywhere. Every step through a forest can cover hundreds of kilometers of densely packed fungal threads. These are the fiber optic cables of the wood-wide web. The fungus forms mycorrhiza with plant roots, and through those connections pass substances that both organisms need to grow. As the fungal threads spread, they can link to multiple plants, creating common mycorrhizal networks. Plants can exchange sugars, nutrients, water, and information through these networks.

### We Are All Interconnected

Aren't we all like the trees of the forests in our social relations and interconnections? Yes, we are all part of our complex and big network. We cannot pretend to live on an island. If something happens to a tree in a forest, the loss affects the other trees. It's the same way for us.

If something negative happens to people around us, even as far as Turkey, we do feel it in our roots.

I want to thank every person who was part of the Helping Hands for Turkey effort.

### The Asian Century

This century is touted to be the Asian Century. The Asian region is now the world's largest economy. As Asia's economies evolve further, the region has the potential to fuel and shape the next normal. In a recent McKinsey podcast called the Future of Asia Podcast series, the outlook continues to remain bullish on the Asian economy and the growth opportunity that it offers for the global economy.

One of the speakers said, "If you are belt-tightening, you're doing it wrong. You must set yourself up for a decade of outperformance, which requires reinvention."

Steve Jobs, the charismatic pioneer of the personal computer era and the co-founder of Apple, always set high standards for quality. He wanted it to be "insanely great." There was no middle ground.

So let us keep our ears on the ground and eyes on the sky, and let's set ourselves to outperform!



Manager : SK  
Graphic Designer : Vishnu. P. R  
Proofreading : RK  
Photography : Alan Ramesh

Lighthouse is produced by the CSS Group's Corporate Communications & Marketing Department  
For enquiries and suggestions: [marketing@cssdubai.com](mailto:marketing@cssdubai.com)  
Download Lighthouse online at [www.cssgroupsite.com](http://www.cssgroupsite.com)

FOR PRIVATE CIRCULATION ONLY

The opinions and views contained in this magazine are not necessarily those of the publisher. Lighthouse cannot accept any liability for the inclusions or omissions, news and views expressed in this magazine. Readers are advised to seek expert opinion before acting on any information contained here.

# CSS INDUSTRIAL PROJECTS SUCCESSFULLY COMPLETE SEAMLESS TRANSPORTATION OF MASSIVE TOWER

The year 2023 began with CSS Dubai undertaking a mammoth project for transporting a giant tower weighing 103 tons with dimensions of 60m x 4.25m x 4.45m. The project involved moving this massive tower across Sheikh Zayed Road, one of the busiest and arterial roads in the metropolis of Dubai all the way to Jebel Ali Port to load on the Vessel chartered by CSS on their journey to final destination.

## Scope And Scale of The Operation

There are two main ways to move such structures : disassembling and then reassembling them at the required destination or transporting it whole. As this project requires the latter, 2 files of 12 axle conventional hydraulic trailer with bolster attachment, were used. The tower was shifted onto the truck using two giant cranes. These moves can be complicated and require precision and careful attention at every step. The tower was inspected, and it was ready to be transported on the road after clearance.



The truck had to be accompanied by private and police escort vehicles throughout its journey to the destination. Diligent planning and a thorough route survey were the order of the day considering all risk assessment. On approaching Sheikh Zayed Road, the truck had to manoeuvre a challenging U-turn. This was a crucial point in the whole endeavour. The biggest challenge was crossing one of the busiest roads in UAE by removing barricades to bypass the Jebel Ali bridge.

## Seamless Integration and Team Work – The Secret of Our Success

The large and bulky towers require diligent planning due to the difficulty in transportation. However, with a well-planned transportation strategy the team could overcome these challenges.

The first step in this herculean project was to define the parties involved. The team at CSS Industrial Projects developed a shared understanding of the required data and integrated all the stakeholders involved. The vessel operators, the partners, the Dubai Police, the Road Transportation Authority, and CSS Industrial Project Team were seamlessly integrated to undertake this gigantic transportation project.



### CSS Industrial Projects – On the Road, For You and with You

The CSS Group offers state-of-the-art land transportation solutions in the region. With its fleet of trucks, trailers, and a state-of-the-art marshalling facility, it can undertake such large-scale and challenging operations. Skilled and experienced professionals can provide tailor-made logistical solutions that can cater to even your most challenging assignments.

Under the guidance of Mr. Sunny Xavier, Mr. Arun Peethamparan & Mr. Renjith Pillai, the CSS Industrial Projects team saw that this operation sailed through with minimal issues. Their tireless efforts and sleepless nights ensured the success of this project

The successful completion of this project was indeed a proud moment for CSS Group Dubai. The Industrial Projects team of CSS lived up to their motto – “On the Road, For You, with You” during the entire project. The hard work, dedication, and coordination that the team showcased were exemplary.

The success of this project adds yet another feather to CSS’s cap and is testimony to CSS’s prowess to undertake Industrial Projects of any scale and proportion.

# CSS OMAN COMPLETES CHALLENGING LARGE DIMENSION MOVEMENTS

CSS Oman recently completed two challenging and arduous projects of moving 125 reel drums and shipping 850 tons of pipes from China.

## Movement of Reel Drums from Sohar to Project Site

CSS Oman project team was contracted to undertake this project. The project involved the transportation of 125 reel drums from a factory in the city of Sohar in Oman to the project site which was 620 kms away. With each of these reel drums weighing 5.2 tons each, a total of 32 trucks were deployed for this operation. This was done in adherence to the Health, Safety, Security and Environment (HSSE) plan set forward by the Projects Team. Complete compliance of the HSSE code is the driving force behind CSS's commitment to improving its sustainability and environmental awareness.

The process involved toolbox talk, chain lashing, cross checking, lashing at all rest points, driver management and fatigue management. The CSS Oman Project Team made sure that the Journey Management Plan (JMP) was strictly followed without any deviations through the complete logistical journey.

The entire lot was moved without any major issues, meeting the client project deadline. This is definitely signifies the immense capabilities of the Project Team of CSS Oman.



## Movement Of Pipes from China to Sohar Port

The CSS Oman project team was also contracted to ship 850 tons of pipes from Lianyungang Port in China to the Sohar Port in Oman on a breakbulk vessel. The scope of the project included the collection from the shipper's factory and movement to the port. The team also had to ensure that the best vessel was chartered to meet the client's deadline.

## CSS Oman Project Team's Capabilities

Even if cable and cable drums look very strong, there are certain rules to follow to avoid damage of the cable and an accompanying impairment of mechanical and electrical characteristics for these cables. The same principle applies to the shipment of pipes. Therefore, the project team was diligent in 100% compliance of the HSSE code both while transporting and storing these cable drums and pipes. Adhering to the HSSE standards helps the CSS Project Team in meeting their goals of being accident free and reducing environmental impact of the operations.



### The best practice for moving and storing such cargo is

- For outdoor storage the ground must be even and clean.
- Stones or bumps in the ground should be removed or smoothed out.
- Damage to the wound goods/cable should be avoided at all costs.
- Cables should be secured against accidental rolling away. Under no circumstances should the drum flange of neighbouring cables touch any wound goods.
- Cable drums should always be stored and transported standing on both flanges.
- The rolling direction needs to be observed very carefully. The arrow printed on the drum flange indicates the rolling direction so that the wound goods do not become loose.
- Cable ends have to be waterproof to prevent moisture penetration which can lead to drastic deterioration in the electrical transmission rate.

### Ready to Take on Challenging Large Dimension Projects

CSS Oman operates under the name of Comprehensive Consolidated Trade and Shipping L.L.C. in Oman. The company has access to an impressive network of global partners, leading them to all corners of the world. CCTS Oman ensures professional, world-class services are offered throughout all segments of its operations.

#### CCTS Oman offers the following services :

- NVOCC
- Ocean Freight Management
- Air Freight Management
- Land Transportation Management
- Projects Management
- Multimodal operations (Sea/Air, Sea/Land Management)
- 3 PL & 4 PL
- Heavy Equipment Logistics

- Auto Logistics
- Yacht & Marine Logistics
- Industrial Packing, Lashing & Crating
- Moving & Relocation

With a newly opened large office premises, CCTS Oman assure their clients of quick turnaround of containers. With the exceptionally strong international network, clients can be sure of seamless and hassle-free logistics with the operations managed by CSS Group technology.

CSS Oman is poised and ready to handle all types of trucking requirement no matter the dimensions of the shipment to be moved. With complete compliance to the best HSSE practices, the projects have been delivered smoothly within the client specified timelines.



## HELPING HANDS FOR TURKEY - DONATION CAMPAIGN IN THE UAE

CSS extended our helping hands to the Turkish Consulate and Turkish Business Council by providing our warehouse and staff in Al Quoz as part of the disaster relief program. CSS Group joined hands with Esskay Logistics under the patronage of the Turkish Consulate and Turkish Business Council. This unprecedented humanitarian effort was launched to collect, sort, and dispatch tons of relief material to Turkey. UAE residents had come together in large numbers to send relief items for those impacted by the deadly earthquake in Turkey and Syria. The collection drive was a combined campaign by the Turkish Consulate in Dubai, the Turkish Business Council, and Turkish Airlines.

### The Aid Efforts

CSS Homeward-Bound warehouse opened its doors to residents and volunteers who worked round the clock accepting donations, listing, packaging, and arranging the logistics to move the items from Dubai to Turkey. Donations like blankets, food items, clothing, items for children, medicines, and many more relief materials were packed at the warehouse in Al Quoz. The three-day campaign saw thousands of residents of various nationalities making their way with donations to the warehouse. Turkish authorities had made a list of relief materials that can be donated. "The material to be donated must have never been used before and must be suitable for winter conditions", a campaign message to residents had earlier read.

The items collected included all types of winter clothing required for adults and children, coats, raincoats, boots, jumpers, trousers, gloves, scarves, berets, socks, and underwear. As for food, durable canned food and baby food were also collected. The Consulate had also asked for baby diapers, hygiene and cleaning materials, and sanitary napkins. Also, items like tents, bedding, mattresses, blankets, sleeping bags, tube stoves, heaters, thermos, flashlights (excluding battery), and generators were collected and packed at the warehouse.

### Turkey-Syria Earthquake and its Aftermath

The earthquake struck southern and central Turkey and western Syria on February 6. The 7.8 magnitude earthquake unleashed devastation in southern Turkey and Syria. A total of three powerful earthquakes struck the region in less than 24 hours, claiming more than 40,000 people. It not only caused huge loss of life in both Turkey and Syria, but also led to thousands of injuries, displacement of people from their homes, and substantial damages. Many rescue teams from around the world have been assisting Turkey and Syria with aid and relief work.





Yunis Sezar, head of Turkish Disaster and Emergency Management said, "We are in front of perhaps the biggest disaster we have faced in history. The death toll due to the earthquakes rose to 40,642, and the work of searching and rescue for people stuck under the debris is in the process." World Health Organization said 26 million people in Turkey and Syria need aid. Seventy countries and 14 international organizations have offered Turkey relief following the quake, Tayyip Erdoğan (President of Turkey) said, including the United States, the United Kingdom, the UAE, Israel, and Russia.

## The CSS CSR Efforts

At CSS, our Corporate Social Responsibility (CSR) is part of our core belief. Our CSR efforts enables us to be socially accountable to ourselves, our stakeholders, and the public. The corporate social responsibility initiatives of CSS have always positively impacted all aspects of society be it economic, social, and environmental.

We have always been at the forefront of providing support at times of natural calamities in and around the region and beyond. The team at the warehouse at Al Quoz tirelessly helped with sorting, packing, and dispatching relief material along with other volunteers. After receiving an overwhelming response from scores of members of the community and Turkish expats the organizers had to extend the campaign by a day.

Roshmon Manoli, Vice President, of Freight Forwarding, Consolidated Shipping Group (CSS Group), said, "As part of the larger CSR mission initiated by our Chairman – T.S. Kaladharan, CSS has always been providing support at times of natural calamities in and around the region. Keeping the same humanitarian spirit intact, CSS has extended its aid to the Turkish Consulate and Turkish Business Council by providing our warehouse and staff in Al Quoz as part of the disaster relief program. Supplies will be collected and we welcome the contribution of the larger community during these difficult times for the people of Turkey."

## UAE to Turkey with Love

Under the directives of the leadership of UAE President, His Highness Sheikh Mohamed bin Zayed Al Nahyan, the UAE swung into action from Day 1 of the earthquake. UAE has been continually sending relief aid to those affected by the earthquake in Syria and Turkey, as part of "Gallant Knight/2". 37 cargo planes carrying food and medical supplies and shelters for the affected people have been operating from Dubai to Istanbul. Planes have been dispatched to Turkey and Syria with emergency aid, food, medical supplies and rescue teams. In the UAE, volunteers,



humanitarian organizations, and government entities are coming together to mobilize relief. The Emirates Red Crescent is leading a 'Bridges of Good' campaign, through which residents have been offering help.

"We are very pleased that the Emirati leadership offered us a helping hand in this moment of distress, and sent teams to deal with it. We are touched by their contributions said Mustafa İlker Kılıç, Consul General of the Turkey Consulate.

In keeping the spirit of the leadership of this nation, CSS has always stepped in with resources and efforts for the hurting world. T.S. Kaladharan, the Chairman of CSS has always been encouraging the teams at CSS to stretch our helping hand to anyone who needs it. He emphasized, "Humanism is when we look out for each other. We might not be able to change the whole world by ourselves, but we surely need to do our bit".



## THE ART OF SUPPLY CHAIN

New York's Museum of Modern Art (MOMA) exhibits a supply chain themed exhibit of a modern gadget - the virtual assistant. Located on MOMA's second floor, the exhibition features a centrepiece that digs deep into the entrails of Amazon's Echo speaker. A black wallpaper displays a detailed description of the life cycle of an Amazon.com Inc. voice-activated Echo speaker. The art work depicts how the device is built, how it operates to what happens when it is thrown out. According to the gallery label, the piece analyzes the vast networks that encompass the "birth, life, and death" of a single Amazon Echo smart speaker.

### "Systems Around the Work"

MoMA curators thought the piece by Kate Crawford and Vladan Joler would grab visitors, so they built a larger exhibit called Systems Around the Work, essentially treating the deep operations behind supply chains as art.

The show's star attraction is 'Anatomy of an AI System', a data visualization by Kate Crawford and Vladan Joler. A series of prints exploring the future of energy extraction to a documentary showing factory workers on a choreographed assembly line in China, the exhibit spotlights the work behind the scenes that produces consumer goods, clothing, power and other mainstays of modern daily life.

The art pieces tell the viewer that there is plenty to learn about the art of supply chain and it's a blend of natural resources and labour. The centrepiece "Anatomy of an AI System" came out of a desire to better understand the real-world impacts of a rise in the use of artificial intelligence. "What we wanted to do was to make the invisible visible, to look at the supply chain as a key part of how AI works", said Dr. Crawford.

A supply chain is an entire system of producing and delivering a product or service, from the very beginning stage of sourcing the raw materials to the final delivery of the product or service to end-users. The supply chain lays out all aspects of the production process, including the activities involved at each stage, information that is being communicated, natural resources that are transformed into useful materials, human resources, and other components that go into the finished product or service.

According to senior curator Paola Antonelli, "The idea was to use that piece as an anchor and then talk about the three systems that it represents, systems of extraction of data, of labour and of resources. Systems are what drive our life in the world very often and they need to be recognized."

## The Supply Chain Behind Amazon Echo

According to Crawford and Joler's research, it takes over 110 elements to produce an Amazon Echo device. Those elements will need to be transformed and combined into components, which then need to be assembled. The diagram points to the scale of the operation and emphasizes the art of supply chain management.

Materials need to be transported from mines to smelters and refiners, and onward to component manufacturers and device assemblers. From there, goods enter distribution chains. But the story doesn't end when gadgets arrive in customers' homes. The AI technology enabling voice assistants to respond to smart speaker operators needs creating and maintaining too. And this infrastructure spans from home Wi-Fi routers through internet server provider (ISP) equipment to data centers hosting the speech recognition magic, which puts thousands of GPUs and processors to work answering user questions.

This shines a light on the labour and planning that goes into making an item. It displays the complexities between innovation, the use of a product in the real world and the world of supply chain management.



## Artistic Presentation of Supply Chain in The Past

Artists have long been inspired by supply chains workings. Photographers, filmmakers and artists have been showcasing supply chain through their mediums. Dave Clark, co-chief executive of digital-focused freight forwarder Flexport Inc., says "Art is very heavily mathematically - based, it is this mix of left and right brain. The best artists are all geometry and symmetrical work coupled with creativity, and that's what supply chain is. Supply chain is this mix of left brain, right brain, heavy analytics with a lot of gut instinct and people skills and leadership."



The photographs taken by Frank Gilbreth in the 1910s displaying the movements of factory workers, director Mauro Herce 's austere 2015 documentary "Dead Slow Ahead" about a freighter crossing the ocean, exhibits at National Museum of Natural History in Washington, D.C., has exhibits on display on how railroads, highways and ports shaped the United States and on the global infrastructure required to operate cell phones all showcase supply chain workings.

The Smithsonian National Museum of Natural History in Washington, D.C., has exhibits on display on how railroads, highways and ports shaped the United States and on the global infrastructure required to operate cell phones. A recent exhibition at Museum Tinguely in Basel, Switzerland, looked at the waste and environmental impact of consumerism and industrialization. In 2016, a British filmmaker became an artist in residence on a container ship, and then got stuck onboard for weeks.



# 2M GLOBAL SHIPPING ALLIANCE : COMING TO AN END

Maersk and MSC are ending the 2M global shipping alliance. The pact will conclude in 2025. A.P. Moeller-Maersk and Mediterranean Shipping Co., the creators of the 2M alliance, are ranked the world's two largest shipping lines. They would end their vessel-sharing partnership as the industry faces reduced demand and lower freight rates.

## 2M Global Shipping Alliance

- 2M is a container shipping line vessel-sharing agreement (VSA)
- It was introduced in 2015 by Maersk and MSC with the aim of ensuring competitive and cost-efficient operations in the Asia-Europe, Transatlantic, and Transpacific trades.
- The 2M agreement has a minimum term of 10 years with a 2-year notice period of termination.

## Reasons for the End of the Alliance

The decision to wind down the 2M alliance comes as shipowners are dealing with

- A drop in cargo and excess vessel capacity has pushed freight rates to pre-pandemic levels. According to operators and charterers, container volumes across the Pacific are down about 30% in January compared with last year.
- Volumes are falling. Therefore, there is less reason to share capacity. According to London-based Container Trade Statistics, global trade volumes fell 9.5% year over year in November 2022, and global shipping rates have been sliding at a steep pace since early last year.

- Shift of balance of power back to customers of these alliances. Customers had complained to regulators the alliances were anti-competitive. Big cargo owners such as Amazon.com Inc. and Target Corp. are securing ocean freight rates about one-third less than last year's contracts.
- Return of pre-pandemic days: Ocean freight has normalized, and the ports have normalized. Most in-transit issues and all the penalties have also been reduced. The retailer's chief operating officer, John Mulligan, of Target, said in November that container rates had come down by one-third and that they would come down further.
- Retailers not securing a spot-on vessel: Retailers that import large volumes of goods typically sign fixed-term contracts with ocean shippers to avoid uncertainty in deliveries, and they are not doing this anymore. Some importers are now opting to pay market rates instead of securing fixed-term contracts.
- Looming uncertainties: The uncertainty has cut down the duration of fixed-rate contracts. Shipowners are offering from one year to as short as three months contracts. Pricing will be under pressure for shipowners this year, while cargo owners are getting discounted rates.
- Changes in the retail scenario: Retailers have scaled back imports. The sales during the holiday season have become weak. Apart from this, they have to deal with bloated inventories.

"It's very unpredictable for our customers and us," Maersk CEO Vincent Clerc said in a December interview. "We made significant capacity adjustments, but the inventory corrections can take a few months."



## Future of the Alliance Partners

The 2M alliance had established a behemoth in the industry when it was created in 2015. Maersk and MSC can each independently move over 4 million TEUs through a combination of owned and chartered ships, according to Alphaliner data. 2M was instrumental in stabilizing the fragmented container market.

Following the creation of 2M, similar partnerships were formed- the Ocean Alliance and THE Alliance. The three groups account for about 75% of global container - shipping capacity, according to data company Statista. The winding down of 2M has raised questions about the future of the other two alliances.

As for Maersk and MSC, terminating the agreement will allow both companies to continue to pursue their strategies. Maersk has been focusing on becoming an end-to-end logistics operator with an emphasis on inland supply services, while MSC has overtaken Maersk in the number of ships it operates, sharply building up its fleet. MSC now has the scale to service all its customers on its own.

"Even if 2M formally runs until January 2025, it should be expected that Maersk's and MSC's networks on the alliance trades will begin to deviate even more in 2023," said Lars Jensen, CEO of Denmark-based Vespucci Maritime.

In a joint statement, CEO Vincent Clerc of A. P. Moller - Maersk and CEO Soren Toft of MSC said: "MSC and Maersk recognize that much has changed since the two companies signed the 10-year agreement in 2015. Discontinuing the 2M alliance paves the way for both companies to continue to pursue their individual strategies. The companies acknowledged the commercial environment that led to the union in 2015 has changed - particularly as the carriers pursue new strategies.

Their alliance, however had defined the market for nearly a decade.

# CSS SHIPS FERRARI 812 SUPERFAST FOR THE GUMBALL 3000 MIDDLE EAST AUTO RACE



CSS Automobile Logistics division proves it again by delivering the Ferrari 812 Superfast for the 2022 Gumball 3000 Dubai to Abu Dhabi Middle East Rally.

With CSS's expertise in handling luxury and sports cars, CSS was entrusted by our network partner Rhenus Logistics Canada to undertake this critical automobile movement. We were tasked to airfreight the "Ferrari 812 Superfast" from Germany to Dubai. Furthermore, it had to be door delivered to the customer in Dubai.

Upon arrival at Dubai Airport, CSS Projects coordinated with the CSS Airport team. With the assistance of our in-house documentation and clearance facilities, it had fast-track clearance with ATA Carnet. This super luxury car was loaded onto a special low truck to ensure safe movements. It was safely and securely transported and delivered to the customer's doorstep. This super fine Italian car had arrived from Germany for one purpose, the 2022 Gumball 3000 Dubai to Abu Dhabi Middle East Rally.

## Gumball 3000

Gumball 3000 was founded in 1999 by British entrepreneur Maximillion Cooper. Gumball 3000 is a car rally that has taken thousands of supercars and entrants on an epic journey across the globe, touching down on every continent to create one of the greatest bucket lists experiences possible behind the wheel.

This year's rally started in the futuristic city of Dubai. After the flag-off in Downtown Dubai, the epic adventure blazed a trail through the arid desert country. The rally took a circular route through the amazing country of Oman before the finale in Abu Dhabi. Along the way, they passed through the best roads the region has to offer alongside some once-in-a-lifetime cultural experiences unique to the region.

The major stops were at Jebel Akhdar, Salalah, Muscat, and Ras Al Khaimah, along with several exciting checkpoints. The Gumballers spent their weekend of VIP hospitality at the Yas Marina Circuit for the finale of the 2022 Formula 1 season - one of the most sought-after and glamorous events on the world's sporting calendar. The event took place between 12-20th November 2022.

## Securing the ATA Carnet

Securing the ATA Carnet for this "Ferrari 812 Superfast" was critical for this operation. The ATA Carnet is often referred to as the "Passport for Goods". The acronym ATA stands for "Admission Temporaire/Temporary Admission". This international customs document permits the tax-free and duty-free temporary export and import of non-perishable goods for up to one year. It consists of unified customs declaration forms, which are prepared and ready to use at every border crossing point.

It is a globally accepted guarantee for customs duties and taxes, which can replace the security deposit required by each customs authority. The ATA carnet is now the document most widely used for international operations involving temporary admission of goods.

## CSS – Experts at Handling Luxury and Sports Cars

Our in-house documentation and clearance teams handled these tasks smoothly and promptly secured the necessary documentation. The tireless efforts of the CSS Auto Logistics team in this operation are highly commendable. The Automobile Logistics division has

shown remarkable performance in handling luxury & sports cars. From auto racks that allow for effective and environmentally friendly loading of vehicles in shipping containers to specialized handling of high-end vehicles door-to-door, the division has become a trusted name in such deliveries in the region and beyond.

The CSS Project operations and CSS Airport team were instrumental in successfully completing this project. With its expertise in import and export requirements, customs regulations, licenses & consular documentation, the Airport Team enabled seamless workflow during the entire operation. The Project team, under the leadership of Arun P, took care of every logistical aspect of the project, considering the complexity of the cargo. The team's collaborative effort helped us complete the task in the most effective and efficient way.

To airfreight, a luxury car requires both strategic planning and tactical expertise. Over the last few years, CSS has handled various such operations successfully. Today it is one of the most sought-after logistical partners in the region for transporting and delivering luxury and sports cars across borders.



**Consolidated Shipping  
Services L.L.C**

## **DIRECT LCL IMPORT FROM COPENHAGEN TO JEBEL ALI**

**Best option to move your LCL cargo from  
Scandinavia !**

+971 4 883 1303

marketing@cssdubai.com

www.cssgroupsite.com





## CSS GROUP REGISTER COME BACK EMERGING CHAMPIONS

CSS Group once a Champion name in UAE domestic cricket arena, come back emerging Champions at the recently concluded JMR Sporting Emerald Cup Season 9.

After a long vacation from the tournaments, CSS Group decides to recapture its glittering glory, and this start winning a Championship is encouraging for all.



Played at Sharjah, the finals were between Consolidated Shipping Services CSS v/s Oasis Cricket Club OCC, and the former lifting the title at the end of a thrilling finale with a margin of 20 runs. Winning the toss and elected to bat first, CSS scored 193 for the loss of 8 wickets in this 20 overs limited tournament, and restricted OCC at 173 for 8, exhibiting a comprehensive team display.

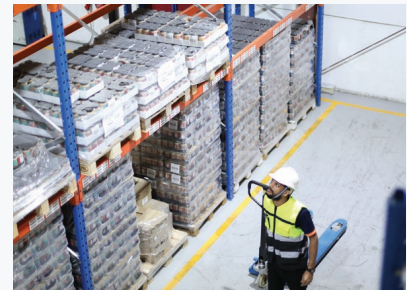
CSS remained unbeaten all through the tournament where the team played a total of 7 matches, winning 6 matches and 1 match was cancelled, with points shared.

JMR SPORTING EMERALD CUP SEASON 9 was played from December 15, 2022 to February 16, 2023





# Bring your brand to UAE with CSS eLogix solutions



- > First mile solutions for importing to UAE.
- > Product registration solutions in Dubai Municipality and health.
- > Ambient, chiller and freezer warehouse storage solutions.
- > State-of-the-art warehousing and ERP.
- > Omni-channel B2B and B2C sales.
- > Temperature controlled delivery options with next day, same day and bullet service options.
- > IOR /EOR Service options.

## KEY BENEFITS



### Location

We are centrally located and easily connected with options for extended cut-off times.



### Time Management

Automated fulfillment solutions with optimal real time inventory management.



### Business growth

Enhance your business and sales through our Fulfillment promises.

## GET IN TOUCH

 +971 4 3217703

 [info@csselogix.com](mailto:info@csselogix.com)

 Street no: 29, 17B – Ras Al Khor Industrial Area 2, Dubai – UAE

# CLAIM FOR MISDELIVERY OF CARGO – LIABILITY OF THE CARRIER AND DEFENCE OF TIME BAR.

The Commercial Court, in September 2022, handed down the judgment in **FIMBank vs. KCH Shipping ([2022] EWHC 2400 (Comm))**, an Appeal under Section 69 of the Arbitration Act, 1996, holding that the time bar in Article III Rule 6 of the Hague Visby Rules can apply to claims in relation to misdelivery after discharge. This case marks a significant milestone since the English Court had never decided on this important question earlier.

In this case, 13 sets of Bills of Lading dated 04 and 14 March 2018 on the Congenbill Form were issued "TO ORDER" for and on behalf of the Master of the Vessel, M/V Giant Ace, for about 85,510 MT in aggregate of coal in bulk. KCH had bare-boat chartered the Vessel from Mirae Wise SA (a Panama Company and registered owner of the Vessel). The consignment of coal was loaded in Indonesia and arrived at the Indian ports of Jaigarh and Dighi around two weeks later. The Original Bills of Lading were unavailable at the discharge port, so the cargo was discharged into stockpiles at Indian Ports between 01 and 18 April 2018 against the letter of Indemnity issued to the carriers, KCH Shipping, by the Vessel Charterers. Unbeknown to KCH Shipping, FIMBANK had financed its customer's purchase of the coal cargo and had been left unpaid under its financing arrangement.

FIMBank wanted to exercise what it considered to be its security for the financing by demanding the delivery of the cargo under the Bills of Lading, of which it claimed to be the lawful holder. Unfortunately for FIMBank, by the time it tried to exercise its security, the cargo had already been discharged from the Vessel and had been collected by the local receivers. FIMBank brought a claim in Arbitration under the Bills of Lading. However, FIMBank commenced the Arbitration against KCH Shipping on 24 April 2020, following an apparent misunderstanding over the identity of the carrier. The preliminary issue in the Arbitration was the claim by FIMBank was time-barred because the Arbitration commenced after more than 12 months from the date of delivery of the cargo.



**Joy Thattil**  
Maritime Lawyer & Partner @ Callidus  
Dubai, Singapore & India  
joy@calliduscmc.com

Art. III Rule 6 of Hague – Visby Rule reads as "the Carrier and the Ship shall, in any event, be discharged from all liability whatsoever in respect of the goods unless a suit is brought within one year of their delivery or of the date when they should have been delivered." While deciding the matter, the Arbitration Tribunal stated that the claim was time-barred. FIMBank brought an appeal to the High Court under Section 69 of the Arbitration Act, 1996, and dismissed the Appeal, making it clear that the Time bar provision applies to this case.

Not only in shipping but in any transport industry, the liability under misdelivery of the cargo can have a significant impact on a carrier. A Bill of Lading is referred to as a document of title, which gives the holder of the Bill of Lading the right to possession of cargo carried under it, and the endorsement and delivery of the Bill of Lading transfer the right of possession of the cargo to the endorsee. Thereby it is settled law that a carrier who misdelivers the cargo (for any reason whatsoever) is liable for any consequential loss suffered by the holder of the Original Bill of Lading.

However, this case by FIMBank has marked a blessing to the Ship owners and the carriers under the Bills of Lading. It is also worth noting that one of the main purposes of the Visby Amendment to Article III Rule 6, which substituted the words "discharged from the liability whatsoever in respect of the goods" for the former expression "discharged from all liability in respect of loss or damage" in the Hague Rules was supposedly to ensure that the One-year time bar applied to cases of misdelivery (Deep Sea Maritime Ltd vs. Monjasa A/S, 2018).









# OUTBOUND

## SAILING SCHEDULE

## DUBAI

AMERICA	JEBEL ALI	ABU DHABI	ALEXANDRIA	AQABA	BAHRAIN	BARCELONA	BEIRUT	CHENNAI	CASABLANCA	COLOMBO	DAMMAM	DURBAN	GENOA	HAIFA	ISTANBUL	JEDDAH	KARACHI	KUWAIT	LONDON GATEWAY	MOMBASA	NEW YORK	NHAVA SHEVA	RIYADH	ROTTERDAM	SHAGJAH	SINGAPORE	SOHAR	UMM QASR			
OLYMPIA	03-Mar																								05-Mar						
DUBAI ENTERPRISE	10-Mar																									12-Mar					
OLYMPIA	17-Mar																									19-Mar					
DUBAI ENTERPRISE	24-Mar																									26-Mar					
OLYMPIA	31-Mar																									02-Apr					
DUBAI ENTERPRISE	07-Apr																									09-Apr					
OLYMPIA	14-Apr																									16-Apr					
DUBAI ENTERPRISE	21-Apr																									23-Apr					
MAERSK PELEPAS	1-Mar																										7-Mar				
WADI BANI KHAUD	8-Mar																										14-Mar				
CELCIUS NICOSIA	15-Mar																										21-Mar				
X-PRESS SALWEEN	22-Mar																										28-Mar				
TSS NEPTUNE	29-Mar																										4-Apr				
MAERSK PELEPAS	5-Apr																										11-Apr				
WADI BANI KHAUD	12-Apr																										18-Apr				
CELCIUS NICOSIA	19-Apr																										25-Apr				
XPRESS ALTAR	02-Mar																										09-Mar				
XPRESS ALTAR	09-Mar																										16-Mar				
XPRESS ALTAR	17-Mar																										23-Mar				
XPRESS ALTAR	24-Mar																										30-Mar				
XPRESS ALTAR	31-Mar																										06-Apr				
XPRESS ALTAR	07-Apr																										13-Apr				
XPRESS ALTAR	14-Apr																										20-Apr				
XPRESS ALTAR	21-Apr																										27-Apr				
AS CLEMENTINA	7-Mar																											14-Mar			
AS CLEMENTINA	14-Mar																											21-Mar			
AS CLEMENTINA	21-Mar																											28-Mar			
AS CLEMENTINA	28-Mar																											04-Apr			
AS CLEMENTINA	4-Apr																											11-Apr			
AS CLEMENTINA	11-Apr																											18-Apr			
AS CLEMENTINA	18-Apr																											25-Apr			
AS CLEMENTINA	25-Apr																												02-May		

ABOVE MENTIONED ARE TENTATIVE VESSELS AND ARE SUBJECT TO CHANGE. ALSO HAVE DIRECT SERVICES TO ISTANBUL

## EMPLOYEES OF THE MONTH

Dec 2022



**Vivin Varghese**

Team Leader- Sales & Operations – CSS Bahrain  
Awarded by Renjith G, Manager – Finance & Admin  
Twin Info Solutions

Nov 2022



**Shijeesh K D**

Coordinator Documentation  
Awarded by Muhmmmed Rowmahs,  
Team Leader – Documentation

Dec 2022



**Ranjith Pushpasagaran**

Operation Executive – Forwarding  
Awarded by Ambili Don  
Senior Manager – Forwarding Operations

**T S Kalandharan** Chairman  
**Chandrakala (CK)** Chief Operating Officer - NVOCC  
**Arjun Bose** Director - CSS Abu Dhabi, Qatar, Oman & Northern Emirates

**Krishna Kalandharan** Director - CSS Bahrain, Saudi Arabia  
**Rakesh Menon** Director - Sales & Marketing  
**Roshmon Manoli** Vice President - Forwarding Sales  
**Renjith Pillai** Vice President - Projects

**Santanu Datta** General Manager - Ocean Freight  
**Richard Varghese** General Manager - SCM & 3PL  
**Fida Asghar** General Manager - NVOCC Sales  
**Susanth Shekar** General Manager - HR & Administration  
**Sundhar Srinivas** Finance Manager

**NORTHERN EMIRATES**

**Thomas Mathew** General manager

**ABU DHABI**

**Midhun George** General manager

**SAUDI**

**Ramesh Pillai** Senior General Manager

**INDIA**

**Rahat Talreja** Vice President - India Operations  
**Rajeev Kumar** Sr General Manager CSS North India  
**T K Viswanath** General Manager, South India

**CSS ELOGIX**

**Britto Sathesh** Director - CSS eLogix

**Sasikala (SK)** Director - CSS eLogix

**MIDDLE EAST**

[www.cssgroupsite.com](http://www.cssgroupsite.com)

**Consolidated Shipping Service L.L.C.**

P.O.Box 61334, Jebel Ali (Opposite LOB-8)

**Regional Head Quarters**

Dubai, Tel : +971 4 8831303, Fax : +971 4 8831312

Email : [info@cssdubai.com](mailto:info@cssdubai.com)

**CFS - Container Freight Station**

Dubai, Tel : +971 4 8872333, Fax : +971 4 8872335

Email : [cfsoperations@cssdubai.com](mailto:cfsoperations@cssdubai.com)

**SCM - Supply Chain Management**

Dubai, Tel : +971 4 8831303, Fax : +971 4 8831312

Email : [infoscmm@cssdubai.com](mailto:infoscmm@cssdubai.com)

**CSS Air Freight Division, UAE**

P.O. Box 27802, Dubai, UAE, Tel: +971 4 282 6176

Email: [info@cssdubai.com](mailto:info@cssdubai.com)

**Consolidated Shipping Services L.L.C. Abu Dhabi**

P.O. Box 32454, Abu Dhabi, UAE, Tel: +971 2 6431717, Fax: +971 2 6431919

Email: [info@cssabudhabi.com](mailto:info@cssabudhabi.com)

**Console Shipping Services W.L.L. Bahrain**

Office no:11 (1st Floor), Building No.393, Road 1912, Block 319, Manama, Bahrain

Tel: +973 17001238, Email: [info@cssbahrain.net](mailto:info@cssbahrain.net)

**CSS Homeward Bound**

P.O. Box 27802, Warehouse No. 801-WH11, Al Quoz Industrial first, Dubai,

Tel: +971 4 3217388, Fax: +971 4 2223445, Email : [info@csshomeward.com](mailto:info@csshomeward.com)

**Console Shipping Services W.L.L. Qatar**

P.O.BOX 55537, Al Matar Centre, Old Airport Road, Doha, Qatar

TEL : +974 4 4111318, FAX: +974 4 4111319, Email : [info@cssqatar.com](mailto:info@cssqatar.com)

**Comprehensive Consolidated Trade and Shipping L.L.C. Oman**

P.O Box 815, Hatat Complex, Building A - 121,

Wadi Adai, Muscat, Sultanate of Oman, Tel:+968 2 4566 009, Fax : +968 2 456 6093

Email: [info@cssmuscat.com](mailto:info@cssmuscat.com)

**CSS Kingston Logistics**

FZC Sharjah : P.O.Box 513258, Warehouse No: M4-09, SAIF Zone, Sharjah, UAE,

Tel: +971 6 5509944, Email : [info@csskingston.com](mailto:info@csskingston.com)

HFZ Sharjah : Phase 1, P.O.Box 513258, Warehouse No: 1K-03/2, Near HFZ Post Office

Sharjah, UAE, Tel: +971 6 5575111, Fax: +971 6 5575222, Email : [info@csskingston.com](mailto:info@csskingston.com)

**CSS Kingston Logistics RAK**

Office No. 605 B, 6th floor, RAKEZ Business Zone, Business Center 4,

Ras Al Khaimah, UAE , Tel:+971 72082001, Email : [info@rak.csskingston.com](mailto:info@rak.csskingston.com)

**Consolidated Shipping Services L.L.C. Saudi Arabia****Dammam Head Office**

1st Floor, Al Sunaid Bldg., King Khalid St., Thubaisi, P.O. Box 9580, Dammam 31423

Tel: +966-13-8333636, Fax: +966-13-8320533, Email : [info@cssksa.com](mailto:info@cssksa.com)

**Riyadh Branch**

2ND Floor, Al Selouy Bldg., Jareer St., Malaz, P.O Box 14051, Riyadh 11422

Tel: +966-11-2063111, Fax: +966-11-2921260, Email : [info@cssksa.com](mailto:info@cssksa.com)

**Jeddah Branch**

Suite 20, Hael Commercial Center, Hael St., P.O Box 52143 Jeddah 21563

Tel: +966-12-6427330, Fax: +966-12-6437220, Email : [info@cssksa.com](mailto:info@cssksa.com)

**CSS eLogix LLC**

Street no: 29, 17B -Ras Al Khor Industrial Area 2, Dubai - UAE

Tel : 04 3217703

Email : [info@csselogix.com](mailto:info@csselogix.com)

**SOUTH ASIA****Console Shipping Services India Pvt. Ltd. - Bangalore**

# 911, Brigade Towers, Brigade Road, Bangalore-560 025,

Tel: 23147777

Email: [mailblr@cssindiagroup.com](mailto:mailblr@cssindiagroup.com)

**Console Shipping Services India Pvt. Ltd. - Chennai**

No: 49/26, First Floor Moula Manor, Coral Merchant Sreet, Chennai -60001

Tamil Nadu, India, Tel : 044-25250001,25250002, 25250003 & 25250004

Email: [mailchennai@cssindiagroup.com](mailto:mailchennai@cssindiagroup.com)

**Console Shipping Services India Pvt. Ltd. - Cochin**

Ground Floor, CCHAA Building, Indira Gandhi Road, W / Island, Cochin - 682009,

Telefax: +91 484 2667693 / 2667698

Email: [mailcochin@cssindiagroup.com](mailto:mailcochin@cssindiagroup.com)

**Console Shipping Services India Pvt. Ltd. - Coimbatore**

No.110, Rajpriya Avenue, #41-A&B, Avinashi Road,

Civil Aerodrome Post, Coimbatore- 641014 / INDIA, Tel : +91 422 4394142

Email: [ctrj@cssindiagroup.com](mailto:ctrj@cssindiagroup.com)

**Console Shipping Services India Pvt. Ltd. - Delhi**

# B -1/ D- 4 , 1st Floor, Mohan Co - Operative Industrial Estate, Mathura Road,

New Delhi- 110044, Tel : 011-40589900

Email: [maildelhi@cssindiagroup.com](mailto:maildelhi@cssindiagroup.com)

**Console Shipping Services India Pvt. Ltd. - Kolkata**

# 10A, Ho-Chi-Minh Sarani, 1st Floor, Flat No. S101/A, Kolkata - 700071

Tel: (+91) 033 46014171

Email: [mailkolkata@cssindiagroup.com](mailto:mailkolkata@cssindiagroup.com)

**Console Shipping Services India Pvt. Ltd. - Ludhiana**

Room No. 102, venus House, Street no. 09, Jeevan Nagar

Focal Point, Ludhiana-141010

Mob: +91 9501004473, Tel: +91 1615080138

Email: [docsludh@cssindiagroup.com](mailto:docsludh@cssindiagroup.com)

**Console Shipping Services India Pvt. Ltd. - Mumbai**

Suite # 102, First Floor, Sai Samarth Building, Deonar, Mumbai - 400088

Tel: 022-35000828, 022-35000829

Email: [mailmumbai@cssindiagroup.com](mailto:mailmumbai@cssindiagroup.com)

**Console Shipping Services India Pvt. Ltd. - Tirupur**

NO:7/5, Ganga Nagar, 2nd Street, "MY CAPS" Building 3rd Floor

Behind Hotel Angel, Tirupur-641 602.

Tel: +91 421 2236025/2236302, Fax:+91 421 4332347

Email: [mailtirupur@cssindiagroup.com](mailto:mailtirupur@cssindiagroup.com)

**Console Shipping Services India Pvt. Ltd. - Tuticorin**

# 1 D, Briyant Nagar, 5th Street Middle, Thoothukudi-628004,

Tel : 011-40589900

Email: [mailtuti@cssindiagroup.com](mailto:mailtuti@cssindiagroup.com)

**Consolidated Shipping Services Lanka (Pvt) Ltd.**

20, 1/2 (1st Floor), Lauris Road, Bambalapitiya, Colombo 04, Sri Lanka

Tel: +94 11 2555 442, Email: [info@csslanka.com](mailto:info@csslanka.com)



## ASSOCIATES

### Consolidated Shipping Services W.L.L. – Kuwait

Suhair Commercial Centre, Opp. Sharq Fire Station, 1st Floor  
Al-Hilali Street, P.O. Box 12075, Shamiya 71651, Kuwait.  
Tel +965 2249 3957, +965 22493960  
Fax +965 2249 3956

Ms Jane Barretto

Asst. Manager

jane@csskuwait.com

### Hindustan Shipping & Clearing House

Ground Floor, CCHAA Building, Indira Gandhi Road,W/ Island,  
Cochin – 682009 Telefax: + 91 484 – 2667693/ 98

Latha Ashokan

Branch Manager

latha@cssindiagroup.com

For a detailed contact list, please email [marketing@cssdubai.com](mailto:marketing@cssdubai.com)



## QUOTABLE QUOTES

*There is always some madness in love. But there is also always some reason in madness.*

**- Friedrich Nietzsche**

*We think sometimes that poverty is only being hungry, naked and homeless. The poverty of being unwanted, unloved and uncared for is the greatest poverty. We must start in our own homes to remedy this kind of poverty.*

**- Mother Teresa**



**Consolidated Shipping  
Services L.L.C**



# **LCL IMPORT**

FROM **PIRAEUS** TO  
**JEBEL ALI**



 +971 505313441

 [marketing@cssdubai.com](mailto:marketing@cssdubai.com)

 [www.cssgroupsite.com](http://www.cssgroupsite.com)