

# LIGHTHOUSE

## STRENGTHENING RELATIONS

Networking dinner for the Shipping fraternity

## EXPLORING OPPORTUNITIES

Budget and Strategy Discussed at the CSS India Meet

## CSS AT SCLG EVENT





# 600,000 Sq Ft Storage Facility In the GCC



3PL SERVICES

OPEN YARD STORAGE

WAREHOUSING

PACKING & LASHING

TEMPERATURE CONTROLLED STORAGE



**Consolidated Shipping Services L.L.C**

Tel: +971 4 8831303 | Fax: +971 4 8831312  
info@cssdubai.com, www.cssgroupsite.com





# LIGHTHOUSE

## CHAIRMAN'S MESSAGE



T S Kaladharan

Famous quotes stand the test of time because they are proved to be true. In this context 'Life begins where fear ends' is an esteemed maxim by Gautama Buddha, later interpreted by many spiritual and philosophical leaders. In today's corporate world, where progress is determined by targeted objectives, quotes like this have gained greater relevance because the burdens on

one's emotional and mental well-being are increased.

Fear is one of our primary emotions. It is something which is natural and instinctive. From an evolutionary perspective fear may save our lives but it can also stop us from living the way we desire. Reacting spontaneously, with a fear-or-flight response, when coming across a venomous snake is one thing. However, fear creeping into our psyche, almost by stealth, is another. Being fearful, when there is no obvious reason, means we become reluctant to step outside our own comfort zone. Examining our life situation and assessing our potential makes for a more focused individual. It invariably helps us gain courage to expand our horizons and look at life in a different perspective.

My greatest worry is that the new generation, who have lots of opportunities around them for professional growth; appear to be faltering owing to lack of self-motivation. Irrational fear is holding some back. Running after motivational gurus is counterproductive because meaningful motivation can only be invoked within oneself. Recognising the fear factor, that is waiting subtly in the background of our minds, enables us to rise above its influence. Putting our fear into a proper perspective means our life really does begin. We will then have the confidence to step outside our comfort zone and grasp new opportunities with enthusiasm.



Lighthouse is produced by the CSS Group's Corporate Communications & Marketing Department

Editor : Unnikrishan G

Graphic Designer : Jeelson Bosco

Printed at : Anaswara offset Pvt. Ltd.

For enquiries and suggestions:

[communications@cssgroupsite.com](mailto:communications@cssgroupsite.com)

Download Lighthouse online at [www.cssgroupsite.com](http://www.cssgroupsite.com)

FOR PRIVATE CIRCULATION ONLY

The opinions and views contained in this magazine are not necessarily those of the publisher. Lighthouse cannot accept any liability for the inclusions or omissions, news and views expressed in this magazine. Readers are advised to seek expert opinion before acting on any information contained here.

## CONTENTS



- 4 CSS India Strategy Meet
- 5 Networking Dinner by CSS Qatar
- 6 Neptune Cargo Event
- 7 DP World News
- 8 CSS at SCLG
- 9 Intermodal 2019
- 10 Opinion by Rahat Talreja
- 13 Industry News
- 14 Professional Talk
- 15 Kaleidoscope
- 16 Sailing Schedule
- 21 Industry News
- 22 Contacts & Addresses



# EXPLORING OPPORTUNITIES

■ BUDGET AND STRATEGY DISCUSSED AT THE CSS INDIA MEET



**C**SS India Strategy and Budget Meet was successfully concluded recently. The meeting was held at the Crowne Plaza Hotel, Kochi from the 15th to 16th March 2019. Station heads and key decision makers from within the group company attended the meeting along with the CSS India Vice Presidents. The welcome address was done by Rahat Talreja, Vice President CSS Central India, wherein he opened up a discussion on the changes happening in the global economic scenario and the possibilities for CSS India in the coming few months.

Followed by Rahat, CSS Delhi did the presentation. CSS North India Vice President, Rajesh Arora in his remarks re-iterated the need for more close coordination of all the branches for providing flawless services in the entire Sub-continent. For the first time, CSS Colombo also made their presence at the CSS India Meet in Kochi. Ms. Menusha,

General Manager, represented Colombo.

Detailed discussions were made on all aspects of export and import services. In her remarks, CSS Group COO for NVOCC, Chandrakala (CK) pointed out the need for more effective use of the IT platform, especially the CRM related activities for creating more transparency in the CSS service offerings.

Midhun George, Asst. General Manager CSS Abu Dhabi attended the two day meet and interacted with all the participants. Special thrust was given to certain network associates and their importance in his presentation as well, by Midhun.

Day two witnessed presentations from Chennai, Tirupur, Coimbatore, Kolkata, Ludhiana and Colombo offices. Closing remarks were made by The CSS Group Chairman T S Kaladharan. He focused on bringing in more combined efforts from all offices for effective utilization of the resources and maximize profits. At the same time, he urged the group members to be more particular in the personalization of services to create a long-standing relationship with the customers.

The first evening dinner was organised at the pool side venue of Crowne plaza. The second evening was organised at the



historic Fort Kochi area. All participants travelled to Fort Kochi, Hotel Fragrant Nature. The Dinner was accompanied with a Gazal performance by acclaimed singer Janardhan Athri. It was an enjoyable evening with the mesmerizing musical performance as well as the Dinner.



# STRENGTHENING RELATIONS

■ CSS QATAR ORGANIZES NETWORKING DINNER FOR THE SHIPPING FRATERNITY



**C**SS Qatar team rolled out the red carpet to welcome guests from the shipping fraternity, for an event exclusively organised by Console Shipping Services in Doha. The event which was named CSS EVE 2019 was organised, providing opportunity to meet, greet and interact with all the partners who stood in supporting CSS Qatar from the very first day of its inception in Doha.

The networking dinner was well attended by the members of the Shipping fraternity. Mr. Rashid Saeed

A A Al Hajri, Partner CSS Qatar, Ajay Krishnan COO, Freight forwarding CSS Group, Krishna Kaladharan Management trainee and Amith, Asst. Manager Operations represented the CSS Group for the evening. The event was organised at the Sharq Village & Spa, the Ritz Carlton Resort in Doha. Modeled after a Qatari village, the Doha hotel shares the richness of the Middle East at every turn.

"It was a great opportunity to host such an event in Doha for us in CSS. Every moment of the evening turned out to be highly interactive as we discussed a lot about the industry happenings and

the market trends" mentioned Amith.

The event kick started with a brief welcome note from the CSS COO, Ajay Krishnan as he extended his gratitude to all the participants who readily agreed to attend the evening at the invitation of CSS. He mentioned about the need of such get togethers for keeping relations intact and where everybody benefits through healthy sharing and interactions. "The relationships on display at the event during the evening are testament to the level of engagement our team at Doha have maintained with our key partners. For a start up in Doha to achieve what we have in 2 years, we thank our customers and carriers," mentioned Ajay.

Console Shipping Services W.L.L. commenced its operations from Doha, the capital city of Qatar in the year 2016 to cater to the growing requirements for professional management of Shipping & Logistics. CSS, with own infrastructure and a pool of trained manpower caters to all shipping and logistics requirements that the industry demands, today.





# NEPTUNE CARGO EVENT

## CSS GROUP ATTENDS THE 4-DAY EVENT IN MANILA

**C**SS Group attended the 3rd annual partnership meeting of the Neptune Cargo Network. The first and the biggest Global NVOCC and LCL Cargo Alliance, Neptune Cargo Network has successfully brought more than 230 sea freight consolidators & LCL forwarders from across the globe under one roof in a 4-day conference being held at the Makati Shangri-La Hotel in Manila, Philippines on February 25 to 28, 2019. CSS Group was represented by Ajay Krishnan COO, Freight forwarding, Chandrakala, COO, NVOCC, CSS Group and Midhun George Asst. General Manager, CSS Abu Dhabi.

Marking its 3rd year in the industry, NEPTUNE has chosen to host its Annual Partnership Meeting in the Pearl of the Orient Seas, Philippines. Consolidators and LCL forwarders that have attended came from 45 countries including the United States, United Kingdom, Australia, Bahrain, Bangladesh, Brazil, Bulgaria, China, Ecuador, Egypt, Germany, India, Indonesia, Israel, Istanbul, Italy, Japan, Kenya, Kuwait, Lithuania, Myanmar, Netherlands, New Zealand, Portugal,



Poland, Romania, Saudi Arabia among others. “In a constantly changing business atmosphere, especially in the Freight forwarding industry, it is vital to have live chats with industry professionals to sharpen our own skills. Neptune Cargo event provided one such opportunity” mentioned Ajay Krishnan.

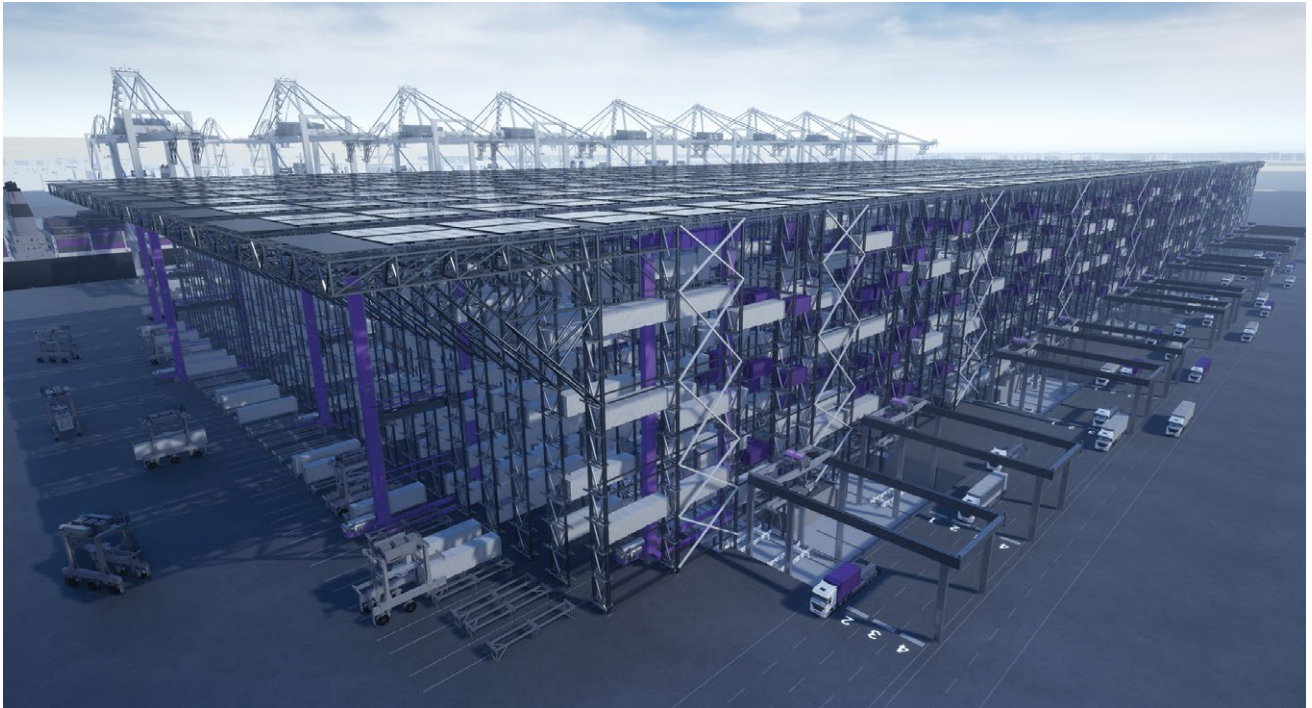
The 4-day conference started with a welcome cocktail inspired by the tropical climate of the country host. The

annual meeting was officially opened with a Samba performance followed by the ribbon cutting ceremony led by the Neptune Cargo Network Directors Christian Raeuber and Nils Walle with the event sponsors. It was then followed by the Network Management Updates, Open Community Mic, Keynote speeches and Face to Face Meeting sessions in the afternoon. A city sight-seeing tour accompanied the Day 3 activities of the meet. “This event introduced us to some new faces from within our industry. The information you gather from such events are enormous and greatly influence your professional side of life. The event also opened up a chance to look into your product placing in the global market and an insight on how to enhance your consolidation business” Commented Chandrakala (CK)

Neptune Consol is dedicated to partnering with sea freight forwarders and consolidators. Its powerful and highly specialized global network comprises only the best local independent sea freight consolidators from their region. Neptune Consol enables every member to offer fully-integrated sea freight solutions and services to customers on a regional and global basis. By solving the expertise, power and reach of the network, which will open the door to a world of new opportunities.



# NEW HIGH BAY CONTAINER STORAGE SYSTEM LAUNCHED AS "BOXBAY"



Introducing a new and intelligent High Bay Storage system that will transform the way containers are handled at ports.

Dubai/Dusseldorf, 17 April 2019: A new international joint venture that aims to change the way that containers are handled in ports has been launched by global trade enabler DP World and industrial engineering specialists, SMS Group.

"BOXBAY" represents a new and intelligent High Bay Storage (HBS) system that will be ready in time for the Dubai Expo 2020 with a pilot project scheduled at Jebel Ali Terminal 4.

The patented design and rack structure of the system creates unique advantages with containers stored up to eleven stories high, delivering the capacity of a conventional terminal in a third of the surface area.

By being fully automated it has direct access to each container, eliminating unpaid and unproductive reshuffling. It also features significant gains in handling

speed, energy efficiency, safety and a major reduction in operating costs.

The joint venture brings together decades of experience in container terminal logistics at DP World and AMOVA's high bay storage handling for metal products that weigh as much as 50 tons each in racks as high as 50 meters. BOXBAY will present its technology and operator business cases for the first time in public at the Terminal Operator Conference (TOC Europe) in Rotterdam in June.

DP World Group Chairman and CEO, Sultan Ahmed Bin Sulayem, said: "We continue to explore new technologies that push boundaries, disrupt and add value for our operations and customers. We are excited by the prospects for BOXBAY as handling speed and efficiencies are key aspects of the ports and terminals business and the system is a major development for the sector around the world. We look forward to the technology being installed

موانئ دبي العالمية  
DP WORLD

especially in readiness for Expo 2020."

Dr. Mathias Dobner, CEO of BOXBAY, said: "With our BOXBAY High Bay Storage technology, we are introducing a revolutionary system that will disrupt global port logistics. Following the world's operators' tremendous interest in our joint venture, we are now looking forward to showcase our solution to them in person."

Burkhard Dahmen, CEO of SMS group, said: "The BOXBAY system is a direct result of our "New Horizon" strategy, in which SMS transfers proven technology from the metallurgical sector to other industries." TOC Europe will take place from 18th to 20th of June in Rotterdam and the BOXBAY booth (E93) is located in the main hall.



# CSS AT SCLG EVENT

## THE ANNUAL NETWORKING AND DINNER IN DUBAI



business group engaged in advancing supply chain & logistics industry locally, regionally and globally. SCLG currently has a membership base of 200+ corporate organizations and is growing.

“The annual networking dinner organised by SCLG is considered as one of the premium events in Dubai. The increase in the number of attendees itself is a proof of the importance of the function. We had a very good opportunity in meeting professionals from various industries and introducing them about the CSS Group” commented Rosh about the function.

**C**SS Group attended the SCLG annual networking and dinner in Dubai. This year the event was organised at the Sobha Hartland. MBR City, Ball room.

The networking dinner was attended by Ajay Krishnan Chief Operating Officer, Freight forwarding CSS Group and Rosh Manoli, General Manager, Sales & Marketing CSS Dubai. The networking event was a gathering of supply chain management professionals from across various industries. It included manufacturers and MNC's who have a presence in this region. The event was very good as it was a platform for knowledge sharing and information on key trends in the supply chain industry. More than 110 industry professionals from around 70 organizations attended the function.

“SCLG Annual Networking was a perfect platform to meet and interact with a cross section of Supply chain management professionals from various organizations. Foundations of long-term business associations are laid during such events and this truly was a great opportunity for us from CSS” mentioned Ajay.



Headquartered in Dubai (UAE), Supply Chain & Logistics Group (SCLG) is a membership driven industry

SCLG is a purpose-based organization delivering values through bringing policy-centric discussion, connection, communication, collaboration, creation, motivation, empowerment and encouragement to individuals, organizations industry and economy. SCLG engages in supporting and conducting industry-centric conferences, roundtables, educational awareness, site visits and supports publications and co-ordination of magazines and research notes aimed at growth and innovation of organizations.





# DEEPLY SADDENED WITH THE DEMISE

## CSS GROUP EXTENDS THEIR HEARTFELT CONDOLENCES TO THE BEREAVED FAMILY



CSS Group was deeply saddened with the demise of **Mr. Lalit Sharma**, CEO of Lalit Freight Services. Mr Sharma has always been a great supporter of CSS Group and a long-time business associate. Chairman of CSS Group T S Kaladharan extended his condolences in Mr. Sharma's untimely departure. "Mr. Sharma's inspiring leadership

and pursuit of excellence have created an enviable reputation for his company in the freight forwarding business. With his demise, we lost a great friend who stood with us in our ups and downs" mentioned Kala in his message.

### A brief profile on Mr. Lalit Sharma

With very humble beginnings with his law degree in his hand, Mr. Sharma's arrival to Dubai was a very unexpected

one. Landed in Dubai Mr Sharma started his career as an accountant in a construction company. But soon he has to look for another job due to many unforeseen misfortunes. His next assignment was with a Freight forwarding company where he not only looked after the accounts, but was extremely engaged with the core trade as well. His impeccable skills in PR and communications supported his growth to a great extent.

Founded in 1997, the eponymous company, Lalit Freight Services, had a rich client base, mainly consisting of Mr. Lalit's friends who were impressed with his work ethics, and the ability to negotiate and obtain the best rates for them. As in any business, there were ups and downs, but Lalit Freight Services continued to thrive and cater to the client's needs with utmost dedication.

Mr. Lalit Sharma worked round the clock to run a business that is his legacy.

Lalit Freight Services has always been a family business committed to providing excellent services to its clients. After Mr. Lalit Sharma's sad demise on March 28th 2019, his wife (Shashikala Sharma), son (Kunal Sharma), and daughter (Palvi Sharma), hope to continue the legacy he left behind with the same dedication that he had.

# INTERMODAL 2019

## ■ CSS GROUP ATTENDS THE THREE-DAY EVENT IN SAO POLO

Intermodal South America, which is considered to be the largest platform that provides communications and idea exchange amongst the cargo and logistics fraternity concluded successfully, recently in Sao Polo, Brazil. CSS Group participated the event from 19th to 21st March, which consisted of exhibition and networking events. CSS was represented by Midhun George Assistant General Manager Sales, CSS Abu Dhabi & Krishna, Management Trainee, CSS Dubai.

"Every year Intermodal brings in immense prospects of business for us at CSS Group and I think that there is no other better manner we can reach the Latin American fraternity across the globe than Intermodal," commented Midhun about the exhibition.

Considered by the industry experts as a strategic platform for generation of new businesses, Intermodal South America gathers during its three days the main players in international and



national market, promoting businesses and partnerships, working as a platform for launchings, brand reinforcement, joint-ventures, sales and networking.

"Intermodal is a worldwide show for coordinations, transport, freight and global exchange. There is abundant

opportunity of relationship building, which could eventually become business. Moreover, this event brought in Global giants and start-ups under the same roof for interaction" Mentioned Krishna about the event.



# TASTE OF INDIA PART II

## HEMACHANDRA NUMBERS

Rahat Talreja

Vice President - CSS Central India

I hope you had a good time learning Vedic maths in the 1st part of this series. Today we will speak of mathematics and Hemachandra numbers ( the series of recurrences)

Mathematics is, in large part, the search & study of patterns and for the explanations as to why those patterns exist. We will see the use of these patterns in day to day life.

Example: Patterns in motion of planets led to theory of gravitation or patterns in genomes help in curing disease.

Lets start the math with the universe of Whole Numbers:

**What are whole numbers :**

.....-4,-3,-2,-1,0,1,2,3,4,.....

**Lets see some number sequences below:**

1,1,1,1,1,1,1,1,1,..... All 1's

1,2,3,4,5,6,7,8,9,.....Counting numbers

1,3,5,7,9,11,13.... Odd numbers

2,4,6,8,10,12,14...Even numbers

1,4,9,16,25,36,.....squares

1,8,27,64,125,.....cubes

1,2,4,8,16,32,64,128,..... Powers of 2

1,4,16,64,256,1024,4096.... Powers of 4

**Lets see now how sequences are related:**

Example 1: Odd numbers and Square numbers are related

How ?

When you add up the odd number sequence you get the square number sequence

$$1=1$$

$$1+3 =4$$

$$1+3+5=9$$

$$1+3+5+7=16$$

**Formula : 1+3+5+.....(2n-1) = n square**

Example 2: Counting numbers and square numbers are related

How?

When you add up the counting numbers sequence to a point N and back to 1, you get the square numbers sequence.

$$1=1$$

$$1+2+1 =4$$

$$1+2+3+2+1 = 9$$

$$1+2+3+4+3+2+1 = 16$$

**Formula : 1+2+3 + ....+ n +.....+ 3+2+1 = n square**

**Now lets see the Hemachandra number series :** (Hemachandra (1150 AD) number series also written by Gopala ( 1135 AD ) also known as Fibonacci ( 1200 AD )

Write down 1 and 2

**The next number is the sum of the previous two numbers**

**1,2,3,5,8,13,21,34,55,.....**

**Formula: Hn= H (n-1) + H ( n-2)**

So which is the 7th number in the series , look up and count, its 21. and so on.

**Where is it applied ?**

Hemachandra numbers in Sanskrit Poetry :

Poetry has 2 syllables - Long ( 2 beats) And Short ( 1 beat)

The number of ways you can fill up 8 beats:

$$\text{Long Long Long Long} = 2+$$

$$2+2+2 = 8$$

$$(\text{Short Short}) \times 4 = 8$$

$$\text{Short Long long Short Long} = 1+2+2+1+2 = 8$$

So answer to the question that in how many ways can you fill up 8 beats , see the 8th number in the Hemachandra sequence : answer is 34.

Hemachandra numbers in Nature:

a) Daisies ( flower) have 13, 21, 34 petals - all Hemachandra numbers

b)Pine Cones have 8, 13, 21, 24 etc spirals - again all in the Hemachandra numbers series

Now, lets evaluate some others mathematical concepts.

**Prime Numbers**

2,3,5,7,11,13,17,.....

Prime numbers have only two factors, 1 and itself

You cannot have two numbers multiplied to get that number - that is a prime number.

So lets see for example the number 13 = 1X13 = 13 = two factors only, 1 and 13.

But these prime numbers were discovered way before humans by nature.

You know Cicadas ? These are insects ( bugs)

Cicadas live underground and emerge only once every N years, where N tends to be a prime number like 13 or 17

Why ?

The hypothesis is that then N is least likely to be a multiple of the length of the predators population cycle which could kill them off.



Indian Cicadas come out every 7 years and some every 19 years

In America, they come out every 13 years and 17 years.

It was observed that those coming out in years other than prime numbers were predated and lost their lives so this pattern has become common that they come out only in prime number years , based on their predators life cycle!!

**Prime numbers in everyday life**

Suppose you have two 200 digit prime numbers

Give them a computer , and it can multiply them in a fraction of a second and give the answer which will be a 400 digit answer.

Now take this 400 digit answer and give it another computer, and ask to find the original two 200 digit prime numbers.

The best known algorithms, working on all the worlds computers , would still take billions of years to find those two 200 digit prime numbers !!!!

Which means A multiply by B = C - here finding C is very easy



A XB but to reverse find the factors A and B which result in C is impossible !

So basis this, it is easy to multiply two large prime numbers but hard to do the reverse process, is the basis of the world's encryption !!!!

Often when we submit private information on the internet, prime numbers are what are being used to encrypt the information and protect it since no one knows how to find factor numbers ( or so we think ) this method of encryption is presumably secure !

The thesis is that it is difficult to go backwards and find the factor or find a quick way to find the factor. So the problem of factoring is the basis of encryption technology.

(Opposite of multiplication is factoring -  $10 \times 10 = 100$

100 is multiplication and factoring is to know 10 and 10 are the factors)

**142857 :**

Example of 142857 - a 6 digit number - so we will multiply it till 6 and see:

$$142857 \times 1 = 142857$$

$$142857 \times 2 = 285714$$

$$142857 \times 3 = 428571$$

$$142857 \times 4 = 571428$$

$$142857 \times 5 = 714285$$

$$142857 \times 6 = 857142$$

Look closely, the same numbers get interchanged in the answers, observe carefully!!!!!!

Are there such n digit numbers so the if you can multiply by 1 through N, the number just cycles around ?

Yes example is 0588235294117647 ( 16 digits)

Try multiplying this 16 digit number with 1 and till 16 and the answers will be the same numbers just circling around.

Are there infinitely many such numbers ? No one knows ....

**Reasons for this pattern is Self similarity and Fractals:**

Examples of self similarity and fractals in Nature are as follows:

Fern leaves - each leaf is just the same as another of its leaf.

Similar fractals are snowflakes, leaves, clouds, coastlines, mountains, lightening .....

Another example of Fractal architecture is The Kandariya Mahadev Temple in Madhya Pradesh

**Self similarity in man made art :**

Fulani wedding blanket from Nigeria

M.C. Escher the Dutch artist who made mathematically influenced graphic art - zoom a picture and you keep seeing the same picture in the picture.

In today's times, Princeton University even has a Fractal broccoli !

Thanks for taking the time

to read this ancient power of Indian sciences and now you can go back to WhatsApp university to learn and argue on what NDA did or UPA did which is our current obsession !

Pride is a result of complex. So if you are already feeling proud that it was an Indian who discovered these patterns and not the Italian Mathematician Fibonacci, it has nothing to do with Hemachandra or Fibonacci, it is to do with your own complex. And yes, I purposely didn't mention that Hemachandra was a Jain monk born in Gujarat so as not to let any artificial pride get in the way of understanding the subject for what it is.

**PS: This article is directly influenced from the lectures and work of the current generation mathematician at Princeton University, Professor Mr Manjul Bhargava!**

# APM TERMINALS INLAND SERVICES' GARMENT-ON-HANGER SERVICE DELIVERS SPEED AND EFFICIENCY IN INDIA'S RETAIL GARMENT INDUSTRY

APM Terminals Inland Services fabricates and modifies standard dry shipping containers, enabling them to conveniently carry coats, dresses, jackets and blazers and any other clothing necessary. As a result, for example, in a 20 feet container, approximately 5,000 women's coats can be placed. "It is an efficient and dust and wrinkle-free method of transportation for the clothing industry as it keeps the garments protected and in a hanging format - cutting down on multiple post receipt activities under the traditional approach," explains Managing Director of APM Terminals Inland Services South Asia, Mr. Ajit Venkataraman.

The traditional method of transporting apparels involves packing into cartons and stuffing into containers. With the GOH system, the garments are individually placed on hangers, covered with plastic and the hangers are then hung in the specially-designed and fabricated garment-holding system inside the container.

**Secure GOH rooms**

Included in GOH services, is the provision of GOH Rooms, "We use specially fabricated mobile GOH trolleys to move the garments around our paved yard facilities, and from there, to

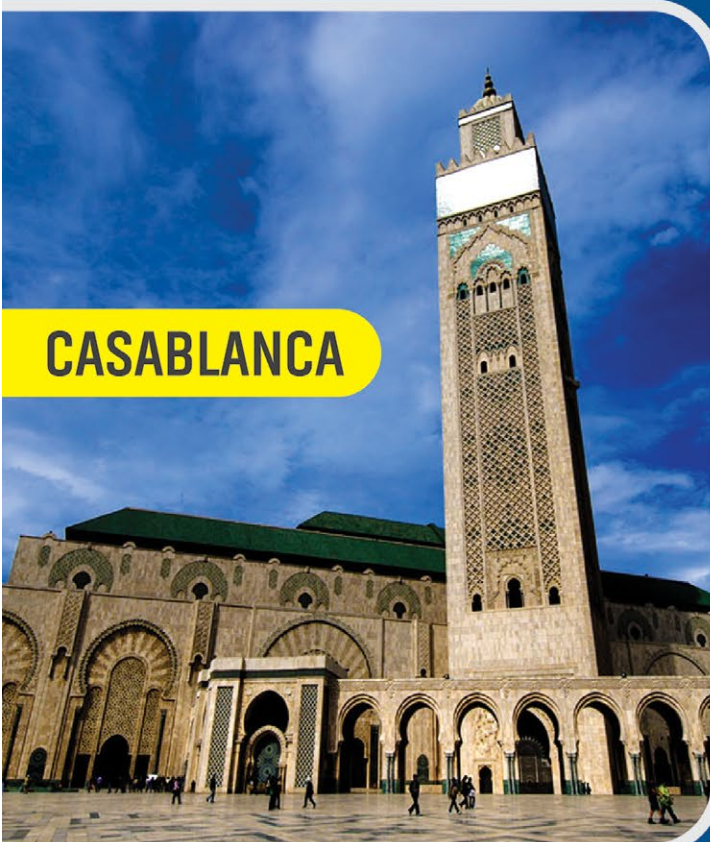


specially constructed dust and moisture-free GOH Rooms. GOH rooms have a special lining and are structured to store the garments in the same hanging format. Access to these rooms is controlled for security and restricted. Special footwear, for example, must be worn in the room." says Mr. Venkataraman.

The concept is about ensuring that when the truck arrives with the consignment at the retail store, it can simply be picked up and placed in the store without any unpacking, unfolding, dust vacuuming or ironing. This saves time and expense - factors that are critical for the fast-moving fashion industry.



# LCL Export from **DUBAI** to **CASABLANCA** and **DURBAN**



**CASABLANCA**



**DURBAN**

Check with us  
for more  
worldwide  
destinations



**CSS DUBAI**

**Consolidated Shipping Services L.L.C.**

+971 4 8872333    info@cssdubai.com    www.cssgroupsite.com

# ETIHAD RAIL AND ABU DHABI CUSTOMS LOOK TO DEVELOP FREIGHT TRANSPORT IN UAE



Etiihad Rail, the developer and operator of the UAE's national railway network, has signed a Joint Partnership Agreement with the General Administration of Customs in Abu Dhabi.

The agreement is aimed at developing freight transport requirements, and enabling trains to travel more efficiently through the adoption of best practices and smart electronic technology.

H.H. Sheikh Theyab bin Mohamed bin Zayed Al Nahyan, Chairman of Etihad Rail; and Jassim Mohammed Buatabh Al Zaabi, Chairman of Abu Dhabi Executive Office and Acting Chairman of the Department of Finance, attended the signing ceremony.

The Joint Partnership Agreement was signed by Rashed Lahej Al Mansoori, director-general of the General Administration of Customs in Abu Dhabi,

and Shadi Malak, CEO of Etihad Rail.

"This joint partnership agreement represents an important step in Etihad Rail's future strategy and contributes to its vision of safely and sustainably connecting regions and integrating industries through rail-based transport," said Sheikh Theyab.

"This will strengthen the role of the Etihad Rail project in promoting the UAE's international trade and facilitate customs clearance, as well as establish a significant shift in the logistics sector by providing an efficient and sustainable rail network and unique shipping solutions in the UAE," he added.

The Etihad Rail national railway project is elevating the transport and shipping sector in the UAE by connecting ports, manufacturing and production points, and population

centres; and therefore, contributing to saving both time and resources to help companies reach their growth potential.

"We are delighted to have signed this agreement with Etihad Rail and to be working together to strengthen the UAE's leading role in the logistics sector, both regionally and globally," said Jassim Al Zaabi. "The agreement is in line with the Abu Dhabi Customs Authority's vision of security and a prosperous economy, in order to achieve a global economic leadership position through enhancing more qualified and effective paths."

Stage Two, when completes, will run for 605 kilometres from Ghuweifat to Fujairah through Khalifa Port and the ports of Khor Fakkan, Jebel Ali and Fujairah, followed by a number of future routes to complete the network.

## COSCO SHIPPING LINES NAMES ITS THIRD 21,000 TEU BOXSHIP GIANT

China's COSCO Shipping Lines has named its latest 21,000 TEU containership at compatriot Jiangnan Shanghai Changxing shipyard. The naming ceremony for COSCO Shipping Galaxy was held in Shanghai on April 18, 2019.

The Ultra Large Container Vessel (ULCV) — the group's third ship of this size — has a length of 400 meters, a width of 58.6 meters and a maximum draft of 16 meters. With a deadweight tonnage of 198,500 dwt, the boxship can reach a

speed of 22 nautical miles.

As explained, the BTWS-equipped COSCO Shipping Galaxy features energy-saving and low-emission technologies, complying with the latest environmental regulations. Following the delivery planned for May

2019, the newbuild will be deployed in the AEU1 service, according to COSCO.

The 215,553 GT COSCO Shipping Galaxy currently has a market value of USD 142.13 million, VesselsValue's data shows.



# GENERAL AVERAGE AND THE IMPORTANCE OF MARINE CARGO INSURANCE



**Joy Thattil**

*Maritime Lawyer & Partner @ Callidus  
Dubai, Singapore & India  
joy@calliduscmc.com*

**G**eneral Average is a principle of maritime law, whereby all stakeholders in a sea venture proportionally share any losses resulting from a voluntary sacrifice of part of the ship or cargo to save the whole in an emergency.

The principle underlying General Average is generally regarded as having been first codified, in the Rhodian Law sometime in the 9th century B.C based on the principle "That which has been sacrificed for the benefit of all shall be made good by the contribution of all".

In recent times, recognizing the need to formulate the principle to create uniformity across seafaring nations, a set of rules were laid down following conferences in York and Antwerp in the late 19th century, resulting in the York-Antwerp Rules, which is the standard rules relating to General Average in modern times.

The one crucial element that makes all the difference, when a General Average is

declared is whether the cargo is insured or not and whether such insurance cover General Average and Salvage Claims. Marine Cargo Insurance can make all the difference in a General Average. The importance of Marine Cargo Insurance is twofold. The same not only indemnifies the policyholder for loss or damage to the cargo, but will also respond to General Average and Salvage Claims.

When a General Average is declared, an Average Adjuster is appointed to co-ordinate the claims, who formulate the extent of the loss which can include repairs to the vessel, salvage and towage costs, loss or damage to cargo survey costs etc. These costs, whilst not impacting directly on some parties, needs to be shared. The Average Adjuster approaches the parties to the voyage for contribution towards these costs in line with the principle of General Average.

If the cargo is insured, the insurers will deal with the Average Adjuster and provide

a Guarantee to satisfy the claims of the General Average; leading to the release of the undamaged goods to the owner.

On the other hand, if the cargo is not insured, the Average Adjuster will request a cash deposit from the owner before releasing the undamaged goods. In certain circumstances, this can be a significant amount of money, which can put a great strain on the cargo owner.

It is therefore of paramount importance that the cargo is insured, prior to the

shipment and special care should be taken to ensure that such insurance covers General Average and Salvage Claims. This will not only protect you for loss or damage to the cargo themselves, but will deal with any General Average and Salvage Claims, should such a situation arise.



# HOW POROUS IS YOUR LIFE?

Some years ago, Kaleidoscope featured an article about **'Techno-leapfrogging'**. It's a notion that persons, technology and economies can move themselves forward rapidly by adopting modern systems without going through the intermediary steps. Younger people do this easily because they take what is available now, as their starting point. Ask them what is a 'brick' mobile phone and they will have generally no idea. They take the internet, cloud storage and the fact that 'World Wide Web' was 30 years old last March for granted. Today the greater majority would be lost without their 'www' connection. So, when someone asked the Kaleidoscope team, if we enjoyed being connected, it was a challenge to compare what our social life situation was in 1989 with where we are now.

It will be difficult for some to realise that writing letters or sending a fax, way back then, was the only way to confirm a telephone discussion. However, unlike emails neither could be hacked and compromised. Equally can you imagine standing at a bus stop with nothing to do, where you take advantage of this opportunity to chat with other regular travellers to work? Nowadays many are lost in their isolated world of checking their mobiles. Yes, it is definitely true that we did use our time to interact with what was around us and consider things. Even with this approach some questioned if we were living life too fast. The 19th century acclaimed poet William Henry Davies, in his poem 'Leisure', wondered: -

**'What is this life if full of care,  
We have no time to stand and stare?  
Currently it's the norm to walk**

about, ignoring others, with eyes staring down at our mobiles. Many are totally disconnected with their local and social environment, only just about trying to avoid bumping into others. There is certainly no consideration given to 'standing and staring', looking at what is going on around them. But what about the person who is not on a mobile? Someone who is looking around? Someone who is checking you out? In such circumstances



the whole idea of social interaction is turned on its head. Distraction from our actual environment may mean we miss obvious opportunities whilst, at the same time, we have made ourselves 'porous' both visually and electronically.

Those who techno-leapfrog into such a situation have automatically accepted it as being normal. They feel comfortable, even though they are missing out on person to person contact and direct emotional interaction. Being primarily use to social media, staying in touch via mobiles, means they have no basis for comparison with anything else. Mobile communication demands instant responses. **Such thoughts are almost 'peer to peer' which is why posts are put into the 'Twittersphere', 'Snapchat' or 'Instagram' which are later regretted, when it is too late.**

New technology really should come with a warning that we need to reassess and refocus on how we communicate and understand others. In doing so we have to set aside a basic human characteristic of using body language and facial expressions as a way of interpreting what is really meant. Even Facebook or Skype video are restrictive in emotional terms. It is true that you can actually sense and smell fear and you can't do this by video!

For those who believe that new technology is the next best thing since sliced bread, then perhaps it would help to consider how things have advanced since 1989. Apply the same rate of change and reasoning to where

we are now and try asking yourself: -

"If Google, Apple and Amazon have us talking to them now, who will be listening and reacting to what we say in 30 years' time?"

'Hi Alexa set the alarm for 6am' - 'Hi Alexa play some Bollywood music', sound innocent enough but it's been reported that these messages are being stored and examined. Children love playing with dolls and 'Barbie' now interacts and build-ups responses with their very young owners. This is where human bonding starts to be replaced with technology and our lives become porous. We have started to leak out information, to others, without realising it. You may be reassured to know that tech companies apparently only listen selectively to your voice, on the basis that they can use information to improve their product. However recent reports, that some share voice clips without your knowledge, must be cause for future concern. Giving out personal information, without your realisation, means your home is no longer your castle because your walls have become porous. Technology is listening in; on the basis it is there to be your assistant.

Maybe as we reach for the future, we should keep a firm eye on how porous are our lives becoming. After all if things progress too far, we may reach a stage where is it too late to hanker for 'Leisure' where: -

**'We have no time to turn at Beauty's  
glance,  
And watch her feet, how they can dance.  
A poor life this, if full of care,  
We have no time to stand and stare'.**

*Kaleidoscope desk*



# INBOUND

DUBAI

VESSEL	ALEXANDRIA	BAHRAIN	BANGKOK	BARCELONA	BREMEN	BUSAN	CHENNAI	CONSTANTA	DELHI	GENOA	GUANGZHOU	HONGKONG	ISTANBUL	KEELUNG	KOPER	NEW YORK	NHAVA SHEVA	NINGBO	QINGDAO	ROTTERDAM	SHANGHAI	SINGAPORE	SOUTHAMPTON	XIAMEN	XINGANG	JEBEL ALI	
WADI ALRAYAN	4-May																									23-May	
WADI ALRAYAN	10-May																										30-May
WADI ALRAYAN	18-May																										6-Jun
WADI ALRAYAN	25-May																										13-Jun
WADI ALRAYAN	1-Jun																										20-Jun
WADI ALRAYAN	8-Jun																										27-Jun
WADI ALRAYAN	15-Jun																										4-Jul
OEL JUMERAH		1-May																									3-May
OEL JUMERAH		7-May																									9-May
OEL JUMERAH		14-May																									16-May
OEL JUMERAH		21-May																									23-May
OEL JUMERAH		27-May																									29-May
OEL JUMERAH		3-Jun																									5-Jun
OEL JUMERAH		10-Jun																									12-Jun
SINAR BANDUNG			2-May																								24-May
SINAR BINDAN				9-May																							31-May
SINAR BANDUNG				16-May																							3-Jun
SINAR BINDAN				23-May																							14-Jun
SINAR BANDANG				30-May																							21-Jun
SINAR BINDAN				6-Jun																							24-Jun
SINAR BANDUNG				13-Jun																							5-Jul
MSC PALOMA				4-May																							22-May
MSC TRESTIE				13-May																							29-May
MSC BEATRICE				20-May																							5-Jun
MSC IRENE				27-May																							12-Jun
MSC GAA				3-Jun																							19-Jun
MSC DANIELA				10-Jun																							26-Jun
MSC ALEXANDRA				17-Jun																							3-Jul
CAP SAN JUAN				4-May																							25-May
MAERSK GUATEMALA				8-May																							1-Jun
MAERSK GIBRALTAR				17-May																							8-Jun
MAERSK GUAYAGUIL				24-May																							15-Jun
MAERSK GENOVA				31-May																							22-Jun
CAP SAN LAZARO				6-Jun																							29-Jun
CAP SAN VINCENT				14-Jun																							6-Jul
HYUNDAI VICTORY					2-May																						26-May
HYUNDAI DREAM					9-May																						2-Jun
HYUNDAI HOPE					16-May																						9-Jun
HYUNDAI HONOUR					23-May																						16-Jun
HYUNDAI RESPECT					30-May																						23-Jun
HYUNDAI DRIVE					6-Jun																						30-Jun
HYUNDAI PRIDE					13-Jun																						7-Jul
MOGRAL						12-May																					24-May
EVER DELIGHT						19-May																					31-May
VARADA						26-May																					7-Jun
ALS CLIVA						3-Jun																					14-Jun
MOGRAL						10-Jun																					21-Jun
EVER DELIGHT						17-Jun																					28-Jun
VARADA						24-Jun																					5-Jul
MAERSK KITHIRA							3-May																				30-May
MAERSK KLAIPEDA							10-May																				6-Jun
MAERSK KALMAR							17-May																				13-Jun
MAERSK KYRENIA							24-May																				20-Jun
MAERSK KIMI							31-May																				27-Jun
SANTA CRUZ							7-Jun																				4-Jul
MAERSK KAMPALA							14-Jun																				11-Jul
FOLEGRANDROS								3-May																			10-May
EMIRATES DANA								10-May																			17-May
RHL CALLIDIAS								16-May																			23-May
FOLEGRANDROS								22-May																			29-May
EMIRATES DANA								28-May																			4-Jun
RHL CALLIDIAS								3-Jun																			10-Jun
FOLEGRANDROS								10-Jun																			17-Jun
MAERSK SEBAROK										3-May																	17-May
MAERSK KARLSRONIA										9-May																	24-May
MAERSK SERANGOON										16-May																	31-May
SEROJA ENAM										23-May																	7-Jun
MAERSK SENANG										30-May																	14-Jun
MAERSK SEMBAWANG										6-Jun																	21-Jun
MAERSK KOTKA										13-Jun																	28-Jun
CSCS ATLANTIC OCEAN											2-May																25-May
COSCO SHIPPING SOLAR											9-May																1-Jun
CSCS INDIAN OCEAN											18-May																8-Jun
CSCS MERCURY											23-May																17-Jun
CSCS GLOBE											30-May																22-Jun
COSCO SHIPPING PISCES											6-Jun																29-Jun
COSCO SHIPPING ROSE											13-Jun																6-Jul
COSCO SHIPPING SOLAR												3-May															20-May
CSCS INDIAN OCEAN												10-May															27-May
CSCS MERCURY												17-May															3-Jun
CSCS GLOBE												24-May															10-Jun
CSCS GLOBE												31-May															17-Jun
KOTA KAHAYA												7-Jun															24-Jun
KOTA KAHAYA												14-Jun															1-Jul
AKINADA BRIDGE													10-May														28-May
AMOUJANI													17-May														4-Jun
COSCO SINGAPORE													24-May														11-Jun

ABOVE MENTIONED ARE TENTATIVE VESSELS AND ARE SUBJECT TO CHANGE. WE OFFER USA IMPORTS FROM CHARLESTON, HOUSTON, LOS ANGELES & NORFOLK WE ALSO OFFER IMPORTS FROM SHENZHEN, TIANJIN, KUWAIT & KARACHI

# INBOUND

DUBAI

VESSEL	ALEXANDRIA	BAHRAIN	BANGKOK	BARCELONA	BREMEN	BUSAN	CHENNAI	CONSTANTA	DELHI	GENOA	GUANGZHOU	HONGKONG	ISTANBUL	KEELUNG	KOPER	NEW YORK	NHAVA SHEVA	NINGBO	QINGDAO	ROTTERDAM	SHANGHAI	SINGAPORE	SOUTHAMPTON	XIAMEN	XINGANG	JEBEL ALI	
BERLIN EXPRESS													31-May													18-Jun	
CMA CGM BERLIOZ													7-Jun														25-Jun
XIN NING BO													18-Jun														9-Jul
AKINADA BRIDGE													25-Jun														19-May
HMM PROMISE														2-May													26-May
HYUNDAI VICTORY														16-May													2-Jun
HYUNDAI DREAM														23-May													9-Jun
HYUNDAI HOPE														30-May													16-Jun
HYUNDAI HONOUR														6-Jun													23-Jun
HYUNDAI RESPECT														13-Jun													30-Jun
HYUNDAI DRIVE														20-Jun													7-Jul
MAERSK EVORA															2-May												24-May
MAERSK HAMBURG															8-May												31-May
MSC HAVANA															16-May												7-Jun
MAERSK HERRERA															22-May												14-Jun
MSC SONIA															29-May												26-Apr
MAERSK HUACHO															5-Jun												21-Jun
MAERSK HIDALGO															12-Jun												28-Jun
MAERSK HARTFORD																4-May											1-Jun
MAERSK COLUMBUS																11-May											8-Jun
MAERSK DENVER																18-May											15-Jun
MAERSK SENTOSA																25-May											22-Jun
MAERSK KENSINGTON																1-Jun											29-Jun
MAERSK KINLOSS																8-Jun											6-Jul
MAERSK SELETAR																15-Jun											13-Jul
NORTHERN DEXTERITY																	7-May										10-May
NORTHERN DEDICATIO																	14-May										17-May
NORTHERN DISCOVERY																											24-May
NORDSPRING																											31-May
NORTHERN DEXTERITY																											7-Jun
NORTHERN DEDICATIO																											14-Jun
NORTHERN DISCOVERY																											21-Jun
COSCO SHIPPING SOLAR																		5-May									22-May
CSCI INDIAN OCEAN																		12-May									29-May
CSCI MERCURY																		19-May									5-Jun
CSCI GLOBE																		26-May									12-Jun
COSCO SHIPPING PISCES																		2-Jun									19-Jun
COSCO SHIPPING HIMALAYAS																		9-Jun									26-Jun
CSCI ATLANTIC OCEAN																		16-Jun									3-Jul
THESEUS																				2-May							27-May
UNAYZAH																				9-May							3-Jun
OOCLE EGYPT																				16-May							10-Jun
MAUK AL ASHAR																				23-May							17-Jun
CSCS SATURN																				30-May							24-Jun
UNIM SALAL																				6-Jun							1-Jul
CSCI JUPITER																				13-Jun							8-Jul
MOL TRADITION																					7-May						22-May
ALNEFUJ																					15-May						31-May
BARZAN																					20-May						5-Jun
MOL TRIUMPH																					27-May						12-Jun
THAMA																					3-Jun						19-Jun
AL MURAKH																					10-Jun						26-Jun
APL CHONGQING																					13-Jun						9-Jul
COSCO SHIPPING SOLAR																						4-May					22-May
CSCI INDIAN OCEAN																					11-May						29-May
CSCI MERCURY																					18-May						5-Jun
CSCI GLOBE																					25-May						12-Jun
COSCO SHIPPING PISCES																					1-Jun						19-Jun
COSCO SHIPPING HIMALAYAS																					8-Jun						27-Jun
CSCI ATLANTIC OCEAN																					15-Jun						3-Jul
CSCI JUPITER																						2-May					11-May
CSCI ATLANTIC OCEAN																					7-May						15-May
COSCO SHIPPING SOLAR																					14-May						22-May
CSCI INDIAN OCEAN																					21-May						29-May
CSCI MERCURY																					28-May						5-Jun
CSCI GLOBE																					4-Jun						12-Jun
COSCO SHIPPING PISCES																						11-Jun					19-Jun
EXPRESS ATHENS																							4-May				26-May
APL CHINGQING																											2-Jun
APL LE HAVRE																											9-Jun
NAVIOS UNISON																											16-Jun
SEASPAN YANGTZE																											23-Jun
XIN HONGKONG																											30-Jun
ATHENIAN																											7-Jul
YM GREEN																											16-May
YM CYPRESS																											23-May
YM COSMOS																											30-May
YM SUCCESS																											6-Jun
YM PLUM																											20-Jun
YM PINE																											27-Jun
YM GREEN																											4-Jul
APL BARCELONA																											4-May
TENG YUN HE																											31-May
QING YUN HE																											10-Jun
APL YANGSHAN																											18-May
APL PARIS																											14-Jun
CMA CGM VELA																											1-Jun
CMA CGM DALLAS																											28-Jun
																											5-Jul
																											15-Jun
																											12-Jul

ABOVE MENTIONED ARE TENTATIVE VESSELS AND ARE SUBJECT TO CHANGE. WE OFFER USA IMPORTS FROM CHARLESTON, HOUSTON, LOS ANGELES & NORFOLK  
WE ALSO OFFER IMPORTS FROM SHENZHEN, TIANJIN, KUWAIT & KARACHI



# OUTBOUND

DUBAI

VESSEL	JEBEL ALI	ABU DHABI	ALEXANDRIA	ACABA	BAHRAIN	BARCELONA	BEIRUT	CHENNAI	COCHIN	COLOMBO	DAMMAMI	DAR ESSALAMI	DELHI	FELIXSTOWE	HAMBURG	JEDDAH	KARACHI	KUWAIT	MOMBASA	NEWYORK	INHAHA SHEFA	PORT LOUIS	RIYADH	ROTTERDAM	SHARJAH	SINGAPORE	SCHAR	UMM QASR	
MS TIGER	3-May	4-May																											
FOLEGANDROS	10-May	11-May																											
MS TIGER	17-May	18-May																											
FOLEGANDROS	24-May	25-May																											
MS TIGER	31-May	1-Jun																											
FOLEGANDROS	7-Jun	8-Jun																											
MS TIGER	14-Jun	15-Jun																											
FOLEGANDROS	21-Jun	22-Jun																											
MAERSK KIMI	6-May		5-Jun																										
SANTA CRUZ	13-May		12-Jun																										
MAERSK KAMPALA	20-May		19-Jun																										
MAERSK KIEL	27-May		26-Jun																										
MAERSK KITHIRA	3-Jun		3-Jul																										
MAERSK KLAIFEDA	10-Jun		10-Jul																										
MAERSK KALMAR	17-Jun		17-Jul																										
XIN NINGBO	7-May			21-May																									
AKINADA BRIDGE	14-May			28-May																									
AMQIANI	21-May			4-Jun																									
COSCO SINGAPORE	28-May			18-Jun																									
BERLIN EXPRESS	4-Jun			18-Jun																									
CMA CGM BERLIOZ	11-Jun			25-Jun																									
XIN NINGBO	18-Jun			2-Jul																									
OEL JUMEIRAH	3-May				5-May																								
OEL JUMEIRAH	10-May				12-May																								
OEL JUMEIRAH	17-May				19-May																								
OEL JUMEIRAH	24-May				26-May																								
OEL JUMEIRAH	31-May				2-Jun																								
OEL JUMEIRAH	7-Jun				9-Jun																								
OEL JUMEIRAH	14-Jun				16-Jun																								
MAERSK SENWANG	3-May					25-May																							
MAERSK SEMBAWANG	10-May					1-Jul																							
MAERSK KOTKA	17-May					8-Jun																							
MAERSK SEBAROK	24-May					15-Jun																							
MAERSK KARLSKRONA	31-May					22-Jun																							
MAERSK SERANGOON	7-Jun					29-Jun																							
SEROJA ENAM	14-Jun					6-Jul																							
MAERSK KIMI	6-May						24-May																						
SANTA CRUZ	13-May						31-May																						
MAERSK KAMPALA	20-May						7-Jun																						
MAERSK KIEL	27-May						14-Jun																						
MAERSK KITHIRA	3-Jun						21-Jun																						
MAERSK KLAIFEDA	10-Jun						28-Jun																						
MAERSK KALMAR	17-Jun						5-Jul																						
ALS CLVIA	5-May							15-Mar																					
MOGRAL	12-May							22-Mar																					
EVER DELIGHT	19-May							29-Mar																					
VARADA	26-May							5-Apr																					
ALS CLVIA	2-Jun							12-Apr																					
MOGRAL	9-Jun							19-Apr																					
EVER DELIGHT	16-Jun							26-Apr																					
ALS CLVIA	5-May								10-Mar																				
MOGRAL	12-May								17-Mar																				
EVER DELIGHT	19-May								24-Mar																				
VARADA	26-May								31-Mar																				
ALS CLVIA	2-Jun								7-Apr																				
MOGRAL	9-Jun								14-Apr																				
EVER DELIGHT	16-Jun								21-Apr																				
ALS CLVIA	5-May									15-May																			
MOGRAL	12-May									22-May																			
EVER DELIGHT	19-May									29-May																			
VARADA	26-May									5-Jun																			
ALS CLVIA	2-Jun									12-Jun																			
MOGRAL	9-Jun									19-Jun																			
EVER DELIGHT	16-Jun									26-Jun																			
COSCO SHIPPING	10-May										13-May																		
COSCO ATLANTIC OCEAN	17-May										20-May																		
COSCO SHIPPING SOLAR	24-May										27-May																		
COSCO INDIAN OCEAN	31-May										3-Jun																		
COSCO MERCURY	7-Jun										10-Jun																		
COSCO GLOBE	14-Jun										17-Jun																		
SAFMARINE NGAMI	1-May											14-May																	
SAFMARINE NYASSA	9-May											21-May																	
HAPPY HELENA	16-May											28-May																	
ATLANTIC FLOSTA	23-May											4-Jun																	
MAERSK JALAN	30-May											18-Jun																	
CAPE MALE	6-Jun											25-Jun																	
SAFMARINE NGAMI	12-Jun											1-Jul																	

ABOVE MENTIONED ARE TENTATIVE VESSELS AND ARE SUBJECT TO CHANGE. ALSO HAVE DIRECT SERVICES TO ISTANBUL

# OUTBOUND

DUBAI

VESSEL	JEBEL ALI	ABU DHABI	ALEXANDRIA	AQABA	BAHRAIN	BARCELONA	BERUT	CHENNAI	COCHIN	COLOMBO	DAMMAM	DAR ES SALAM	DELHI	FELIXSTOWE	HAMBURG	JEDDAH	KARACHI	KUWAIT	MOMBASA	NEW YORK	NHAVA SHEVA	PORT LOUIS	RIYADH	ROTTERDAM	SHARJAH	SINGAPORE	SOHAR	UMM QASR
SAFMARINE NYASSA	19-Jun											8-Jul																
MAERSK SARAT	5-May												31-May															
CAP SAN VINCENT	12-May												7-Jun															
MAERSK SALTORO	19-May												14-Jun															
CAP SAN JUAN	26-May												21-Jun															
MAERSK GUATEMALA	2-Jun												28-Jun															
MAERSK GIBRALTAR	9-Jun												5-Jul															
MAERSK GUAYAGUIL	16-Jun												12-Jul															
MAERSK SARAT	5-May													4-Jun														
CAP SAN VINCENT	12-May													11-Jun														
MAERSK SALTORO	19-May													18-Jun														
CAP SAN JUAN	26-May													25-Jun														
MAERSK GUATEMALA	2-Jun													2-Jul														
MAERSK GIBRALTAR	9-Jun													9-Jul														
MAERSK GUAYAGUIL	16-Jun													16-Jul														
XIN NINGBO	7-May														12-May													
AKINADA BRIDGE	14-May														19-May													
AMOLIANI	21-May														26-May													
COSCO SINGAPORE	28-May														2-Jun													
BERLIN EXPRESS	4-Jun														9-Jun													
CMA CGM BERLIOZ	11-Jun														16-Jun													
XIN NINGBO	18-Jun														23-Jun													
BOTANY BAY	3-May															6-May												
IRENES RELIANCE	10-May															13-May												
BOTANY BAY	17-May															20-May												
IRENES RELIANCE	24-May															27-May												
BOTANY BAY	31-May															3-Jun												
IRENES RELIANCE	7-Jun															10-Jun												
BOTANY BAY	14-Jun															17-Jun												
ATLANTIC FLOSTA	7-May																8-May											
AS PAOLA	14-May																15-May											
AS PAOLA	21-May																22-May											
AS PAOLA	28-May																29-May											
SAFMARINE KURAMO	4-Jun																5-Jun											
SAFMARINE KURAMO	11-Jun																12-Jun											
SAFMARINE KURAMO	18-Jun																19-Jun											
SAFMARINE KURAMO	25-Jun																26-Jun											
JOGELA	5-May																	13-May										
BERMUDA	10-May																	18-May										
VIL DARDANELLES	17-May																	25-May										
LOUISE	31-May																	8-Jun										
JOGELA	7-Jun																	15-Jun										
BERMUDA	14-Jun																	22-Jun										
VIL DARDANELLES	21-Jun																	29-Jun										
SEASPAN LUMACO	1-May																		29-May									
JPO VIRGO	2-May																		29-May									
HAMMONIA AMERICA	7-May																		5-Jun									
TOMMI RITSCHER	9-May																		5-Jun									
MAERSK TEVA	16-May																		12-Jun									
KMARIN AGUA	23-May																		19-Jun									
CMA CGM JAMAICA	30-May																		26-Jun									
ALS FIDES	8-May																			15-May								
NORTHERN GENERAL	15-May																			22-May								
ALS FIDES	22-May																			29-May								
NORTHERN GENERAL	29-May																			5-Jun								
ALS FIDES	5-Jun																			12-Jun								
NORTHERN GENERAL	12-Jun																			19-Jun								
ALS FIDES	19-Jun																			26-Jun								
IRENES RHYTHM	5-May																				4-Jun							
MIAMI TRADER	12-May																				11-Jun							
NORO	19-May																				18-Jun							
BLUXFAVOURITE	26-May																				25-Jun							
BSL LIMASSOL	9-Jun																				9-Jul							
IRENES RHYTHM	16-Jun																				16-Jul							
MIAMI TRADER	23-Jun																				23-Jul							
COSCO SHIPPING PRICES	3-May																									9-May		
IRENES RELIANCE	4-May																									11-May		
UMM SALAL	6-May																									13-May		
COSCO HIMALAYAS	10-May																									16-May		
CSCL JUPITER	13-May																									20-May		
CSCL ATLANTIC OCEAN	17-May																									24-May		
TAYMA	20-May																									26-May		
BOTANY BAY	25-May																									31-May		
IRENES RELIANCE	1-Jun																									7-Jun		
BOTANY BAY	8-Jun																									14-Jun		
CSCL GLOBE	14-Jun																									21-Jun		
IRENES RELIANCE	15-Jun																									22-Jun		

ABOVE MENTIONED ARE TENTATIVE VESSELS AND ARE SUBJECT TO CHANGE. ALSO HAVE DIRECT SERVICES TO ISTANBUL

continued...page 20



VESSEL	JEBELALI	ABU DHABI	ALEXANDRIA	AQABA	BAHRAIN	BARCELONA	BEIRUT	CHENNAI	COCHIN	COLOMBO	DAMMAMI	DARES SALAMI	DELHI	FELIXSTOWE	HAMBURG	JEDDAH	KARACHI	KUWAIT	MOMBASA	NEW YORK	NHAVA SHEVA	PORT LOUIS	RIVADH	ROTTERDAM	SHARJAH	SINGAPORE	SOHAR	UMM QASR
SEASPAN YANGTZE	1-May																						27-May					
XIN HONG KONG	6-May																						3-Jun					
ATHENIAN	14-May																						10-Jun					
CMA CGM MUMBAI	19-May																						16-Jun					
EXPRESS ATHENS	27-May																						24-Jun					
APL CHONGQING	3-Jun																						1-Jul					
APL LE HAVRE	10-Jun																						8-Jul					
MS TIGER	2-May																							3-May				
ATLANTIC SOLLU	9-May																						10-May					
MS TIGER	16-May																						17-May					
ATLANTIC SOLLU	23-May																						24-May					
MS TIGER	30-May																						31-May					
ATLANTIC SOLLU	6-Jun																						7-Jun					
CSCJ SYDNEY	2-May																								20-May			
HYUNDAI DRIVE	9-May																								27-May			
HYUNDAI PRIDE	16-May																								4-Jun			
EVER DECENT	23-May																								11-Jun			
MALAKOS	30-May																								18-Jun			
EVER DELUXE	6-Jun																								25-Jun			
CSCJ SYDNEY	13-Jun																								1-Jul			
NORDIC WISMAR	5-May																										8-May	
NORTHERN GENERAL	12-May																										15-May	
NORDIC WISMAR	19-May																										22-May	
NORTHERN GENERAL	26-May																										29-May	
NORDIC WISMAR	3-Jun																										5-Jun	
NORTHERN GENERAL	10-Jun																										12-Jun	
NORDIC WISMAR	17-Jun																										19-Jun	
NORTHERN GENERAL	24-Jun																										25-Jun	
DAPHNE	6-May																											9-May
DAPHNE	14-May																											16-May
DAPHNE	21-May																											23-May
DAPHNE	28-May																											30-May
DAPHNE	4-Jun																											6-Jun
DAPHNE	11-Jun																											13-Jun
DAPHNE	18-Jun																											20-Jun
DAPHNE	25-Jun																											27-Jun

# TRISTAR INKS NEW DEAL WITH SHELL FOR 6 CHEMICAL TANKERS TO BE BUILT IN SOUTH KOREA

The vessels will be delivered between the middle of May 2020 and the first week of January 2021 and were ordered on the back of long-term charter contracts with oil major Shell.

Dubai-based oil and gas logistics company Tristar Group has signed firm contracts for six new build 25,000 MT DWT, IMO Type 2 Oil and Chemical Tankers with South Korean shipbuilder Hyundai Mipo Dockyard.

The vessels will be delivered between the middle of May 2020 and the first week of January 2021 and were ordered on the back of long-term charter



contracts with oil major Shell. This follows Tristar's acquisition of six new build, 50,000 MT DWT, MR Tankers from the same yard in 2016, also with long

term charters with Shell. "Our business model will continue to be built around the needs of customers and we are confident that if we continue to offer best in class services at

competitive pricing there will be immense opportunity to leverage the brand equity that we have built over the years," said Eugene Mayne, founder and group CEO of Tristar Group

## QATAR PETROLEUM SEEKS UP TO 100 LNG SHIPS

State-owned Qatar Petroleum has formally issued an invitation to tender for up to 100 LNG carriers to be delivered over the next decade to handle new volumes and replace some of the existing fleet.

The bulk of the shipping requirement emerges from the company's participation in the Golden Pass LNG project and production in Qatar. LNG volumes will be purchased and offtaken by Ocean LNG (a 70%/30% joint venture between Qatar Petroleum and ExxonMobil) from the Golden Pass LNG export project slated to start operations by 2024.

"With this significant step, Qatar Petroleum embarks on another major LNG ship-building campaign expected to initially deliver 60 LNG carriers in support of the planned production expansion, with a potential to exceed 100 new LNG carriers over the next decade," said Saad Sherida Al-Kaabi, minister of State for Energy Affairs and president and CEO of Qatar

Petroleum, in a statement on 22 April. The company had reached out in bilateral discussions with shipbuilders earlier this year, a shipbrokers said. Shipbuilders in South Korea, Japan and China were contacted with the requirements ahead of the tender, according to one shipping source.

Qatar Petroleum is likely to use 170,000cbm carrying capacity as the base for its multi-ship requirement, a shipbroker also said. TFDE-based propulsion is also likely to be a system of choice. It is not clear if the vessel requirement includes Q-Flex and Q-Max models traditionally associated with Qatari projects. The producer has likely decreased the average tank size of the required vessel to increase delivery flexibility and turn away from the single-fuel model.

"We have seen situations over the last few years where Qatar was constantly in the charter market for conventional tonnage," a shipbroker said.

## CEVA LAUNCHES NEW RAIL SERVICE FROM CHINA TO EUROPE



CEVA Logistics North Asia launched a new rail service from China to Europe. The new Wednesday Xiamen block train service started on 10th of April.

According to a statement, the Multimodal (Sea-Rail) Transportation mode further taps the potential of trade and cooperation among the countries

under the "Belt and Road Initiative".

Located in the Southeast of mainland China, Xiamen is a hub city geographically favourable located for sea and rail transportation. It connects China's surrounding coastal countries via the Belt and Road to the reach the West. Multimodal transport reinforces trade and economic growth across the region

## ARAMEX INAUGURATES NEW E-COMMERCE FULFILMENT CENTRE IN DUBAI



Aramex has launched a new, partially automated fulfilment centre in Dubai to support the rapid growth of its e-commerce business with B2B retailers.

Located at Dubai Logistics City and covering 60,000 square meters, the temperature-controlled centre is one of Aramex's largest fulfilment warehouses across the region. It features new technologies including a 'Pick to Light' system, which uses light-directed picking technology to improve accuracy and efficiency, and an automated conveyor belt system.

Commenting on the new centre, Iyad Kamal, chief operating officer at Aramex, said the new centre was part of the logistics company's digital transformation strategy.

"Aramex's new fulfilment centre is an important investment that will help support the rapid growth of our logistics business and our retailer's omni-channel sales strategies," he said.

"The facility's cutting-edge technology strengthens our position by ensuring fast, seamless and reliable fulfilment. It forms an important component of our digital transformation strategy and our efforts to improve our logistics offering for retailers across the world," Kamal added.



**T S Kaladharan** Chairman  
**Ajay Krishnan** COO - Freight forwarding  
**Chandrakala (CK)** COO - NVOCC  
**Arjun Bose** Director - CSS Abu Dhabi, Qatar, Oman, Sharjah & Sri Lanka

**Rakesh Menon** Senior V P - CSS Logistics  
**Sreenath V** V P - Operations & Projects  
**Narayan Tagore** Senior General Manager - CSS Bahrain  
**Rosh Manoli** General Manager - Sales & Marketing

## INDIA

**Rajesh Arora** Vice President - North India  
**Rahat Talreja** Vice President- Central India



## MIDDLE EAST

[www.cssgroupsite.com](http://www.cssgroupsite.com)

**Consolidated Shipping Service L.L.C.**

P.O.Box 61334, Jebel Ali (Opposite LOB-8)

**Regional Head Quarters**

Dubai, Tel : +971 4 8831303, Fax : +971 4 8831312  
 Email : [info@cssdubai.com](mailto:info@cssdubai.com)

**CFS – Container Freight Station**

Dubai, Tel : +971 4 8872333, Fax : +971 4 8872335  
 Email : [cfsoperations@cssdubai.com](mailto:cfsoperations@cssdubai.com)

**SCM – Supply Chain Management**

Dubai, Tel : +971 4 8831303, Fax : +971 4 8831312  
 Email : [info@fmclogistics.net](mailto:info@fmclogistics.net)

**Dubai International Airport Cargo Gateway (Dubai Cargo Village)**

P.O. Box 27802, Dubai, UAE, Tel: +971 4 2826176, Fax: +971 4 2826179  
 Email: [info@cssdubai.com](mailto:info@cssdubai.com)

**Consolidated Shipping Services L.L.C. Abu Dhabi**

P.O. Box 32454, Abu Dhabi, UAE, Tel: +971 2 6431717, Fax: +971 2 6431919  
 Email: [info@cssabudhabi.com](mailto:info@cssabudhabi.com)

**Consolidated Shipping Services W.L.L. Bahrain**

P.O. Box 2209, Manama, Bahrain, Tel: +973 17540106, Fax: +973 17540107  
 Email: [info@csibahrain.com](mailto:info@csibahrain.com)

**CSS Homeward Bound**

P.O. Box 27802, Warehouse No. 801-WH11, Al Quoz Industrial first, Dubai,  
 Tel: +971 4 3217388, Fax: +971 4 2223445  
 Email : [info@csshomeward.com](mailto:info@csshomeward.com)

**Console Shipping Services W.L.L. Qatar**

P.O.BOX 55537, Al Matar Centre, Old Airport Road, Doha, Qatar  
 TEL : +974 4 4111318, FAX: +974 4 4111319  
 Email : [info@cssqatar.com](mailto:info@cssqatar.com)

**Comprehensive Consolidated Trade and Shipping L.L.C. Oman**

P.O Box 815, 117, First Floor, Building A, Hatat Complex,  
 Wadi Adai, Muscat, Sultanate of Oman, Tel: +968 2 456 6 094, Fax: +968 2 4566093  
 Email: [info@cssmuscat.com](mailto:info@cssmuscat.com)

**CSS Kingston Logistics FZC Sharjah**

P.O.Box 513258, SAIF Zone, Sharjah, UAE, Tel: +971 6 5575111,  
 Fax: +971 6 5575222  
 Email : [info@csskingston.com](mailto:info@csskingston.com)

**Consolidated Shipping Services L.L.C. Saudi Arabia****Dammam Head Office**

1st Floor, Al Sunaid Bldg., King Khalid St., Thubaishi, P.O. Box 9580, Dammam 31423  
 Tel: +966-13-8333636, Fax: +966-13-8320533, Email : [info@csssaudi.com](mailto:info@csssaudi.com)

**Riyadh Branch**

2ND Floor, Al Selouly Bldg., Jareer St., Malaz, PO Box 14051, Riyadh 11422  
 Tel: +966-11-2063111, Fax: +966-11-2921260, Email : [info@csssaudi.com](mailto:info@csssaudi.com)

**Jeddah Branch**

Suite 20, Hael Commercial Center, Hael St., PO Box 52143 Jeddah 21563  
 Tel: +966-12-6427330, Fax: +966-12-6437220, Email : [info@csssaudi.com](mailto:info@csssaudi.com)

**Consolidated Shipping Services Lanka (Pvt) Ltd.**

20, 1/2 (1st Floor), Lauris Road, Bambalapitiya, Colombo 04, Sri Lanka  
 Tel: +94 11 2555 442, Email: [info@csslanka.com](mailto:info@csslanka.com)

## INDIA

**Console Shipping Services India Pvt. Ltd. – Bangalore**

Suite 305, III Floor, Sophia's Choice, No.7, St. Mark's Road, Bangalore - 560001  
 Tel: +91 80 22133011, Fax: +91 80 421110133  
 Email: [mailblr@cssindiagroup.com](mailto:mailblr@cssindiagroup.com)

**Console Shipping Services India Pvt. Ltd. – Chennai**

Door No. 151, New Corporation Door No. 132, First Floor  
 "Gee Gee Emerald" Commercial Complex, Valluvarkottam High Road  
 Nungambakkam, Chennai 600 034,  
 Tel : 044 28171511/ 28174512/ 28173481/ 28170515  
 Email: [mailchennai@cssindiagroup.com](mailto:mailchennai@cssindiagroup.com)

**Console Shipping Services India Pvt. Ltd. – Cochin**

Ground Floor, CCHAA Building, Indira Gandhi Road, W / Island, Cochin - 682009,  
 Telefax: +91 484 2667693 / 2667698  
 Email: [mailcochin@cssindiagroup.com](mailto:mailcochin@cssindiagroup.com)

**Console Shipping Services India Pvt. Ltd. – Coimbatore**

No.110, Rajpriya Avenue, #41-A&B, Avinashi Road,  
 Civil Aerodrome Post, Coimbatore- 641014 / INDIA, Tel : +91 422 4394142  
 Email: [ctrj@cssindiagroup.com](mailto:ctrj@cssindiagroup.com)

**Console Shipping Services India Pvt. Ltd. – Delhi**

A 35, Upper Ground Floor, FIEE Complex, Ma Anandmayee Marg  
 Block A, Okhla Phase II, Okhla Industrial Area, New Delhi, Delhi 110020  
 Tel: +91 11 40589900, Fax: +91 11 40589988  
 Email: [maildelhi@cssindiagroup.com](mailto:maildelhi@cssindiagroup.com)

**Console Shipping Services India Pvt. Ltd. - Kolkata**

Srishti, 3rd floor, flat 3B, 12, Ho-Chi-Minh Sarani, Kolkata - 700071  
 Mobile : +91 9830295152, Tel: 03346014171, Fax : 03346014171  
 Email: [mailkolkata@cssindiagroup.com](mailto:mailkolkata@cssindiagroup.com)

**Console Shipping Services India Pvt. Ltd. - Ludhiana**

Room No. 102, venus House, Street no. 09, Jeevan Nagar  
 Focal Point, Ludhiana-141010  
 Mob: +91 8284052138, Tel: +91 1615080138  
 Email: [meena@cssindiagroup.com](mailto:meena@cssindiagroup.com)

**Console Shipping Services India Pvt. Ltd. – Mumbai**

Suite # 102, First Floor, Sai Samarth Building, Deonar, Mumbai - 400088  
 Tel: +91 22 42212800, Fax: +91 22 42212899  
 Email: [mailmumbai@cssindiagroup.com](mailto:mailmumbai@cssindiagroup.com)

**Console Shipping Services India Pvt. Ltd. – Tirupur**

NO:7/5,Ganga Nagar, 2nd Street, "MY CAPS" Building 3rd Floor  
 Behind Hotel Angel, Tirupur-641 602.  
 Tel: +91 421 2236025/2236302, Fax:+91 421 4332347  
 Email: [mailtirupur@cssindiagroup.com](mailto:mailtirupur@cssindiagroup.com)

**Console Shipping Services India Pvt. Ltd. – Tuticorin**

No. 5A/179G, Caldwell Colony, 2nd Street [ West ], Tuticorin - 628008  
 Tel/ Fax : 0461 2377088, Mobile. +91 8220009788  
 Email: [mailtuti@cssindiagroup.com](mailto:mailtuti@cssindiagroup.com)

# ASSOCIATES

## Consolidated Shipping Services W.L.L. – Kuwait

Suhair Commercial Centre, Opp. Sharq Fire Station, 1st Floor  
Al-Hilali Street, P.O. Box 12075, Shamiya 71651, Kuwait.  
Tel +965 2249 3957, +965 22493960  
Fax +965 2249 3956

Abdulrahman Amin  
Dean Landers

Gr. General Manager  
General Manager

abdulrahmanamin@csskuwait.com  
dean@csskuwait.com

## Hindustan Shipping & Clearing House

Ground Floor, CCHAA Building, Indira Gandhi Road, W/ Island,  
Cochin - 682009 Telefax: + 91 484 - 2667693/ 98

Latha Ashokan

Branch Manager

latha@cssindiagroup.com

For a detailed contact list, please email [marketing@cssdubai.com](mailto:marketing@cssdubai.com)



## QUOTABLE QUOTES

*A tree is known by its fruit; a man by his deeds. A good deed is never lost; he who sows courtesy reaps friendship, and he who plants kindness gathers love*

- Saint Basil

*You have to enjoy life. Always be surrounded by people that you like, people who have a nice conversation. There are so many positive things to think about*

- Sophia Loren

*Success is no accident. It is hard work, perseverance, learning, studying, sacrifice and most of all, love of what you are doing or learning to do*

- Pele

*The secret of genius is to carry the spirit of the child into old age, which means never losing your enthusiasm*

- Aldus Huxley

*I have seen many storms in my life. Most storms have caught me by surprise, so I had to learn very quickly to look further and understand that I am not capable of controlling the weather, to exercise the art of patience and to respect the fury of nature*

- Paulo Coelho



**CSS** Homeward Bound

# BALIKBAYAN BOXES

Door delivery



to Philippines

Cargo collection from:  
**Dubai, Abu Dhabi, Sharjah  
& Northern Emirates**

Call us at:

Toll Free : **800 CSS (277)**

 Mobile : **056 994 6320**

[www.csshomeward.com](http://www.csshomeward.com)

