

LIGHTHOUSE

**WALKING THE
EXTRA MILE
WITH CSS**

**CSS GROUP
COMMENCES ITS
ACTIVITIES FROM
SRI LANKA**

**SKID
MOVEMENT**

**CSS GROUP
ATTENDS THE FPS
AGM AT NINGBO**

**CSS GROUP
STRATEGY MEET 2018**

The Annual Strategy Meet concludes on the 17th of November, 2018 in Colombo, Sri Lanka



PROJECTS OIL & ENERGY



Consolidated Shipping Services L.L.C.

P.O.Box 61334, Jebel Ali, Dubai, UAE

Tel : +971-4-8872333, Fax: +971-4-8872335

Email : infoprojects@cssdubai.com



LIGHTHOUSE

CHAIRMAN'S MESSAGE



T S Kaladharan

Invariably the start of a New Year provides an opportune time to look back on events of the previous twelve months and look forward with anticipation to the year ahead. The support and encouragement we have received from our partners, customers and colleagues, over the last twelve months, were really appreciated. It gives us welcome impetus that raises us to a higher

level of confidence. Our mutually beneficial relationships have developed into friendships. This, has in turn, energised us to explore larger horizons. Thank you to everyone, as I wish you a wonderful year ahead.

A speech that I heard recently, from the former President of United States of America, George Bush Jr., during the memorial service for his father Bush Sr., was thought-provoking. In this speech he mentioned the inaugural address of his father as the 41st President of USA. Bush Sr., said, "We cannot hope only to leave our children a bigger car, a bigger bank account. We must hope to give them a sense of what it means to be a loyal friend, a loving parent, a citizen who leaves his home, his neighborhood, and town better than he found it."

I found this statement has got many overarching meanings, not only in our personal life, but in business too. It is the responsibility of every succeeding generation to leave what they've inherited, in better shape and condition. If we are able to start this New Year, by taking a lead that invigorates generations to come, I believe it will help focus our minds on achieving greater success for all of us.



Lighthouse is produced by the CSS Group's Corporate Communications & Marketing Department

Editor : Unnikrishan G

Graphic Designer : Jeelson Bosco

Printed at : Anaswara offset Pvt. Ltd.

For enquiries and suggestions:

communications@cssgroupsite.com

Download Lighthouse online at www.cssgroupsite.com

FOR PRIVATE CIRCULATION ONLY

The opinions and views contained in this magazine are not necessarily those of the publisher. Lighthouse cannot accept any liability for the inclusions or omissions, news and views expressed in this magazine. Readers are advised to seek expert opinion before acting on any information contained here.

CONTENTS



- 4 CSS Strategy Meet 2018
- 6 NVOCC Service @ CSS
- 7 A Brief Chat with Jean Paul
- 8 Perspective by Francois Wolberg
- 9 CSS Sri Lanka
- 10 CSS @ FPS
- 11 Projects @ CSS
- 13 Opinion by Rahat Talreja
- 14 Professional Talk
- 15 Kaleidoscope
- 16 Sailing Schedule
- 21 DP World News
- 22 Contacts & Addresses



11

12



CSS GROUP STRATEGY MEET 2018

THE ANNUAL STRATEGY MEET CONCLUDES ON THE 17TH OF NOVEMBER, 2018 IN COLOMBO, SRI LANKA

The CSS Group's annual Strategy Meet 2018 was held at the Cinnamon Lakeside Resort, Colombo, Sri Lanka from the 15th to 17th November. Time to evolve continued to be the theme this year for the meet, which invariably declares the need for strategically design new plans and programmes to enhance the business performance in this most challenging time. The meeting was inaugurated by Sasikala (SK), Manager-Corporate communications, CSS Group.

As a usual practice, budgets, achievements and strategies were presented by all divisions and departments. Delegates representing various offices of CSS Group and associates, participated the two days meeting in Colombo. Discussions and debates were seen all through the presentation on topics which needed extra thrust and focus.

The Sri Lanka operations of CSS Group was kick-started alongside the strategy meet in Colombo. The



CSS Group operations in Colombo received a soft launch during the event. Full-fledged operations will soon commence from the region. The meet was concluded with a vote of thanks by T S Kaladharan, the Chairman and Founder of CSS Group, wherein he re-iterated the need for more focused strategies and personalized services in all segments.





Birthday Celebration of Kala



The last day was dedicated to one-to-one meeting amongst various departments and associates. CSS has always strived to excel in all the ventures, year on year and today has reached a respectable position amongst the renowned names in the field of Shipping and Logistics in the Middle East and the Indian Sub-continent.

POST-MEET SOCIALIZING EVENTS

Day one dinner for the delegates were organized at the Rustic and Lovely Buba beach club and seafood

restaurant, in Mount Lavinia, Colombo. The restaurant on the beach served some exquisite seafood cuisine within a stress release ambience for the delegates after a hectic meeting day. The group travelled in a coach together to this seaside venue and partied till mid-night.

Prestigious Access towers II within the Colombo city was the chosen dinner venue for the group on the second evening. The renowned roof top bar and restaurant here was ready to receive the cheerful gathering by sun down. The venue opened up a panoramic view of the Colombo city with all its lights and glitters. The new office bearers from CSS Colombo and associates from Maldives also attended the socializing session.



NVOCC- THE FLAGSHIP SERVICE OF CSS GROUP



Chandra Kala
COO, NVOCC-CSS Group

Consolidated Shipping Services Group, has attained a reputable position in the industry with specialized operations in cargo consolidation (LCL), both in Ocean export and import. The reliability of world class transcontinental partnerships qualifies CSS Group to be amongst the leading NVOCC service providers from the GCC and the South Asia. Personalized client handling and global standards in cargo management has made CSS the most trusted partner in consolidation activities in the region where they operate, that too made possible with an enviable global network of partners.

Past two decades we have been aggressively selling our NVOCC activities along with our overseas agents across the globe. We provide our clients with coherent and reliable LCL solutions through our trusted counterparts in Far East, Europe and the Americas. Our relationship with our agents has extended beyond business over the years and CSS Group is grateful for that. From this edition onwards, Lighthouse will be walking alongside, our network partners discussing and debating issues interesting to our readers

WALKING THE EXTRA MILE WITH CSS

FPS



■ JEAN-PAUL, CEO, FPS ROTTERDAM, MENTIONS ABOUT HIS BUSINESS AND FRIENDSHIP WITH CSS IN A BRIEF CHAT WITH LIGHTHOUSE



JEAN PAUL
CEO
FPS Rotterdam

Commencing in 2003, the combined efforts of both CSS Group and FPS Rotterdam has made them the market leaders today in the NVOCC industry. Mr. Jean-Paul van Munster, the CEO of FPS Rotterdam, spoke with Lighthouse on more about the mutual relationship. "It started when Mr. Kala and I visited Mr. Alvin Tan that

time director of FPS Singapore at the same time. It was Mr. Alvin Tan who knew me since 1995 and figured that CSS and FPS Rotterdam had a lot to offer to each other, and he was absolutely right!"

Not only in business that Jean-Paul shared the same momentum with Kala, it flourished so well into the family matters as well gradually. "We both never missed the opportunity to be in each other's family functions and over the period of time, we shared the joy of being like a single family and we continue the relationship which has grown in the past 15 years to become not only business partners, but something more valuable in this world; "United Friends".

While discussing about the industry and business, Jean-Paul mentioned about the beginning and growth of FPS Rotterdam. He was full of excitement when he narrated the story. "FPS, Famous Pacific Shipping B.V. originated from the 1992 founded forwarder TOP Trans Ocean Pacific forwarding. With the growing consolidation activities within TOP it was in 2001 when we decided to separate the consolidation activities from TOP and continue fully independently as a neutral consolidator under the name of FPS Famous Pacific Shipping Rotterdam,

successfully led by its present director Ms. Saskia de Jong. During the past 17 years FPS Rotterdam has grown from its humble start to one of the leading consolidators in Rotterdam".

Jean-Paul paused for a moment and continued to say that he is obliged for the accomplishments, whatever achieved so far, to the support of their strong world-wide partners like the CSS Group. Besides its strong worldwide network, the keynote of the growth and quality of FPS Rotterdam is a professional and reliable team and the ongoing IT investments.

"Rotterdam, the centre from where we make cargo movement more efficient than ever, is the ideal gateway to and from the hinterland of Europe. Connecting the world with our direct services. The

movement of cargo is closely monitored every step of the way. Track and trace, online booking and EDI systems make it easy to keep an eye on every shipment. Our state-of-the-art warehouse offers an IMO and non-IMO separated area. Last but not least our friendly service makes us gladly walk the extra mile. We believe in a friendly long-term relationship with our customers and worldwide partners like CSS!"



BEATING THE NOISE

“How to Keep Focused in a Noisy World and Progress at Work”



FRANCOIS WOLBERG

Director

Global Textile Logistics (GTL)
C.H. Robinson

In today's world, where technology seems at times to be taking over our lives and where external noise is getting louder and louder, it's becoming increasingly more difficult to maintain focus. Especially at work.

Take a simple example in your daily life; you wake up, get ready for work and already your brain has been challenged by messages received overnight from your work place, text messages from friends and family,

WhatsApp messages from people across the world, not to mention breaking news and relentless advertising bombarding us at every turn. Add in Twitter, Instagram and Facebook, and by the time you reach the office you've already been pulled in a million different directions. As you sit down, and are faced with an overloaded inbox and phone calls to take and make, and the need to interact with colleagues all at the same time.

HOW TO STAY FOCUSED IN THE MIDST OF ALL THAT?

It requires discipline and a strong willingness to follow a plan. In the midst of daily distractions and task items, it's important to keep focused on the goal of your job. People who succeed and climb the ladder have managed to do this, and you can too. Every day we must overcome the distractions and focus on the job at hand, finding time to do that one thing that makes a difference. We must tell ourselves that every day we need to have done something to help grow the company, something to help us reach our goal at work.

I lead and manage a great deal of

business within my company and often feel pulled in many directions. I remember the goal of my job. To grow business for my company. To sell. My strategy? Every day I look at what I can do to accomplish something important which is going to give me an opportunity to grow my business and my division.

For example:

- ❶ Spend the entire day visiting customers - consolidate existing relationships and build new ones.
- ❷ Spend time researching and studying the market and identifying new potential clients.
- ❸ Set a number of calls and review expectations and results with our sales force.
- ❹ Share ideas with managers - Identify growth opportunities in developing new products & new lanes.
- ❺ Prepare a sales trip logistically and design a strategy.

Whatever you set your goals at, remember that at the end of the day you need to be satisfied about what was accomplished and not waste it as we often do not controlling our own time and actions and spending the day doing only clerical tasks.

As the year comes to an end, I encourage you to thinking about what you can do in 2019 to turn down the distractions and reach your goals at work. You'll be amazed at how fast you will progress in your job, and more importantly, you'll leave work with a feeling that you accomplished something towards your goal, which is a feeling louder than any other noise.

I wish you all a wonderful holiday and happy new year 2019....

Stay well until the next chronicle



CSS GROUP COMMENCES ITS ACTIVITIES FROM SRI LANKA

As part of its global expansion CSS Group is proud to announce the opening of its Sri Lanka enterprise. Consolidated Shipping Services, Sri Lanka – commenced operations from Colombo, on the 1st of December 2018

"We are delighted to have our presence in the city of Colombo. Sri Lanka has always had a significant position in the global logistics map. Like at all our other locations, CSS will strive to deliver

the best of services across all verticals to our clients in Sri Lanka," commented Chandrakala (CK), COO, NVOCC CSS Group.

Strategically located in a key East-West trade route and set close to India, Sri Lanka has the essential locational advantage needed for it to develop into a key logistics hub in South Asia. The island state is an important transshipment hub in the region.

Sri Lanka, as a local economy, has been on the rise.

Infrastructure development has been a focus, the results on the ground are testament to this. The forecast for long term growth in the Public and Private infrastructure space is strong. The CSS Group network strength combined with the experience, onboarded, at CSS Sri Lanka will allow for our new enterprise to leverage the expected uptake in the economy.

The team in Colombo will be led by Menusha Srilankeshwara, who carries with her years of experience

in the freight forwarding & Logistics industry. "Colombo port has remained the busiest port in South Asia for the last many years. The total trade volume is increasing every year. This is the right time for CSS to be in Sri Lanka, and as a professional team, we can contribute a lot to the logistics business and gain much more from it," mentioned Menusha, General Manager, CSS Sri Lanka.

CSS Group wishes good luck to the team at CSS Sri Lanka.

Address Details:

Consolidated Shipping Services Lanka (Pvt) Ltd.

20, 1/2 (1st Floor), Lauris Road
Bambalapitiya, Colombo 04
Sri Lanka

Key Contacts:

Menusha Srilankeshwara

General Manager
menusha@csslanka.com

Hansi Rajakaruna

Customer Relations Officer
cs@csslanka.com

For more information:

Tel : +94 11 2555 442

Email : info@csslanka.com

EMIRATES SKYCARGO WANTS TO MAKE IRELAND A GATEWAY FOR NORTH AMERICAN TRADE

Emirates SkyCargo carried close to 10,000 tonnes of Irish exports, from Dublin, during 2018 and plans to develop the city as a gateway for its North American cargo.

"We are continuing to grow our operation in Ireland and are currently developing Dublin as a gate-way to

North America for cargo traffic coming from Dubai and elsewhere on our network," said Michael Meagher, Emirates SkyCargo manager for Ireland.

The Dubai-based carrier offers up to 25 tonnes of cargo capacity on each of its Boeing 777 passenger

aircraft that operate the Dublin route. Around 35% of Emirates SkyCargo's Irish export cargo for 2018 comprised food items such as crabs, oysters, razor shells and salmon, much of which is heading to the Far East and specifically, Hong Kong, Shanghai and Singapore.

Source : Online News Portals

CSS GROUP ATTENDS THE FPS AGM AT NINGBO

■ WHILE FAMOUS PACIFIC SHIPPING GROUP CELEBRATES 20 YEARS



From October 23rd-26th, over 100 freight consolidators came together to celebrate the 20th anniversary of the Famous Pacific Shipping Group and attend the FPS Group 20th Annual General Meeting. This year the members of FPS Group met in Ningbo, China. Ningbo is one of the oldest cities in China and is also home to one of China's most important seaports.

Every year an FPS Group member hosts the FPS Group AGM, and Portever Ningbo was awarded the honor of hosting this year's event. Portever Ningbo selected the Westin Ningbo as the venue for the 20th AGM, and chose a scenic riverside venue for the Farewell Dinner.

CSS Group was represented by Chandrakala (CK), COO, NVOCC. CSS

Group has a long-standing relationship with FPS since its inception. "The conference provided a perfect platform to discuss the challenges and the opportunities for the freight forwarding fraternity. Moreover, attending FPS AGM was important to CSS, as this gave us the chance to interact with the most experienced heads of companies and meet and greet all our friends" mentioned Chandrakala.

This year's event was kicked off by a cocktail reception that offered a wide variety of light foods, a good selection of drink options, and the opportunity for AGM attendees to meet, and even get a head start on their One-One Meetings.

On the 24th and 25th, attendees spent

their mornings listening to presentations from new companies who have joined since last year's event in Morocco, and also a Forum session that allowed for members to discuss suggested policies and changes to the group. In the afternoon of both days' members were focused on One-One Meetings.

The AGM closed with an Al Fresco Riverside Farewell Dinner on Ningbo's Old Bund. The evening featured skilled performers, delicious food, and delightful beverages.

The members and the associates are all looking forward to 2019 following the success of this year's event in Ningbo.

AMAZON AIR TO EXPAND FLEET TO 50 AIRCRAFT WITH NEW ATSG DEAL

Amazon Air is expanding its fleet with the lease of a further 10 Boeing 767-300 freighters from lessor ATSG, with options for even more, bringing its total to 50 aircraft.

Amazon Air currently leases 20 air freighters from ATSG and 20 from Atlas Air, with the additional 10 from ATSG to be operational in the next two years.

The ten aircraft will be leased from ATSG subsidiary Cargo Aircraft Management (CAM)

and operated by one of the company's airlines.

All of the leases will be for 10 years, with the possibility to extend them for up to three more years. Amazon began its air operations in 2016 as it sought to gain more control over its network and meet customer demand for faster delivery.

The move was widely expected as Amazon will have 100 aircraft parking spaces at the hub it is developing at Cincinnati/Northern Kentucky Airport.

Source : Online News Portals

SKID MOVEMENT

■ CARGO MOVEMENT FROM JEBEL ALI TO HOUSTON



Projects team of CSS, shared details of a recent project movement they handled in Dubai. Two Skids of re-melt tank with structural steel skid & structural steel frame was moved from Jebel Ali to Houston. The cargo specification was 8.20 x 4.50 x 4.80 m with 24 Tons weight.

The cargo was moved as Ocean freight. "The entire movement was done overcoming lot of challenges and as usual

our team were enthusiastically delivering their best throughout the process. Each project movement provides ample scope for learning something new." Commented Sajith Vijayan, Manager - Projects.

The scope included collection on special 40 cms low deck trailer from Mussafah to Jebel Ali, lashing & securing of skids onto the 40 feet flat rack container and exporting to the

destination in Houston completing all documentation and clearances needed for the move. As is the practice, extensive study and survey was conducted as part of this movement regarding the Origin, destination and the travel route. Each point of the entire project was carefully assessed to ensure a fool proof and smooth journey of the cargo

LCL Import from Europe to Dubai



CSS DUBAI

Consolidated Shipping Services L.L.C.

+971 4 8872333 info@cssdubai.com

www.cssgroupsite.com

Check with us for more worldwide destinations

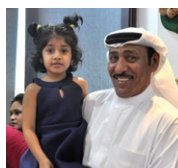
UAE NATIONAL DAY



Mr. Jasper & Mr. Jack Yu from Portever Shipping Shenzen with CK.

Ajay Krishnan, COO-Freight Forwarding & Chandra kala(CK) COO-NVOCC.

CHRISTMAS



TEAM - WORK

Rahat Talreja

Vice President - CSS Central India

I'd like to start with a poetry rendition by Sarshar Sailani, a dialogue writer and poet:

*Chaman mein Ikhtilat-e-rang-o-bu se baat banti hai
Hum hi Hum hain toh kya hum hain
Tum hi Tum ho toh kya tum ho*

Translated in English as:

In a garden, multiple forms of colour and smell make up the ecosystem

If I am only about myself, then what am I.

If you are only about yourself, then what are you.

How beautiful.

The ecosystem of an organisation is the result of the multiple flavours that every individual contributes.

The smart, the smarter, the smartest.

The foolish, more foolish, most foolish.

The lucky, the luckier, the luckiest.

The good, the better, the best.

And voila, the organisation, its ecosystem, its culture, its philosophies, all bloom with this combined energy of its several people.

Let us therefore decipher a few points which are important for effective team work.

Team Size:

Let's do some math with a simple number like 100

a) First, divide 100 by 100
The answer is 1
1 is 1% of 100

b) Now, divide 100 by 1
The answer is 100
100 is 100% of 100

(Some might be confused because math was always a tricky subject, but read again and it's really a simple point)

From the above example, we can see that dividing by 100 gives you 1 percent of something and dividing by 1 gives you 100 percent of that thing.

Which brings us to the point on team-work where appropriate team size is most important to team work. If too many people get involved in the same work, the percentage of output only decreases.

What are the issues we typically see in involvement of too many people in a simple task?

- The simple task becomes complicated
- The task is simple but the discussion around it is disproportionate to its size
- People involved become more important than the task itself
- Ultimately the task never gets done
- Even if it gets done, the emotional, physical & financial costs mismatch the importance of the task

Therefore, its most important to have teams which are appropriately sized.

ABSOLUTE VS RELATIVE IMPORTANCE:

Let's understand this point from our own human body. In relative terms, the heart is

more important than the feet. But in absolute terms, the heart has its own functions and importance as does the feet. If this point is clear, most of us can work towards achieving absolute positions and not relative positions. Because the quest for relative positions only create issues within us and with us.

The working class all over the world sacrifice their NEEDS to fulfil the WANTS of their corporate employers. This is their absolute power. The power of giving. In fact, in the entire hierarchical spectrum, the one above fulfils his wants by sacrificing the needs of the one below.

Let us take the example of a top leader on the Forbes List. He wanting to move into the top 100 richest is a want, not a need. Who fulfils that want? The ones who serve him. They sacrifice personal time, family time, health, peace and so many basic human needs to help him achieve that objective. It's a separate thing that the Saturn (Shani) in our horoscope decides the kind of people we will have serving us. The stronger it is, the better the people who serve us. These planet positions are not out of the blue, they are earned through good karma. Everything is earned and not an entitlement. But in the context of the material world, yes, someone's needs fulfil the others wants.

Therefore, perspective is very important and we can all have harmony with each other in teams when this is clear. When you go to a restaurant, first the restaurant owner



feeds you and then by paying the bill, you feed him. Both feed each other.

MOTIVATION:

Try complimenting a top sportsman for just his good looks and not his sport.

He will be offended.

Imagine meeting Sachin Tendulkar and complimenting him for his pearly white teeth. Not a mention of cricket. He will say his famous words: Aila.

If you notice, true power always underplays itself not to attract attention from the wrong eyes and ordinary will always overdo itself to attract attention from the true powers.

It is most important to identify tasks and allot functions as per one's strength and caliber and be continuously appreciated for that. The above examples have made it amply clear that misreading someone's caliber and appreciating for the contextually wrong things might actually demotivate the person.

These are some points on team work. Many others also exist. We all are trying.

RELEASE OF THE CARGO WITHOUT THE PRESENTATION OF ORIGINAL BILL OF LADING



Joy Thattil

Maritime Lawyer & Partner @ Callidus
Dubai, Singapore & India
joy@calliduscmc.com

A bill of lading is a document issued by a carrier (or their agent) to acknowledge receipt of cargo for shipment. Although in England, the term once related only to carriage by sea, a bill of lading may be used for any type of carriage of goods. A bill of lading must be transferable and serves three main functions:

- It's a conclusive receipt i.e. an acknowledgement that the goods have been loaded;
- It contains or evidences the terms of the contract of carriage; and
- It serves as a document of title to the goods.

As much as it is the most important document for shipment of goods from one place to the other, it has become very common for the cargo interest or their agents to demand the release of cargo without submission of the original bill of lading.

At the outset, the answer to whether the cargo can be released without the presentation of the OBL is a big NO! as this involves a lot of risk both for the carrier and the cargo interest since the reasons for the non-presentation are enormous. In spite of this being wrongful there are some carriers and P&I that do release the cargo, subject to certain exclusions and exemptions.

P&I releasing the cargo without presentation of OBL

In general P & I club exclude cover for release of cargo without production of Original Bill of Lading by incorporating an exclusion in their policy. However, certain P&I clubs include an omnibus clause in their Rules which do permit some flexibility by allowing the members to provide cover in some circumstances. At the same time with respect to commercial insurers providing P&I cover, this flexibility is not available to override any specific exclusions provided in the policy wordings.

P&I will be involved in such cases under various roles and various

circumstances. When P&I represents the carrier, if the Principals or their agents have released the cargo without the OBL the shipper would be the claiming party. On receiving the claim from the shipper P&I club would reject the claim on the ground that there was no personal negligence. Similarly, when P&I represents the cargo interest, the carrier may have released the cargo without the OBL yet P&I would continue to reject the claim as the fault is off the carrier.

Thus, certain P&I clubs provide a wider cover with respect to release of cargo with Bill of Lading subject to certain specific exclusions already mentioned in the Insurance policy.

Carrier/Shipping Line releasing cargo without the presentation of OBL

When it comes to the carrier, they deny taking responsibility of the cargo that is to be discharged without the presentation of the Bill of lading as it causes a lot of trouble for the shipping line/ carrier eventually.

Although the above is what the carrier mostly follows, there are some cases where the carrier releases the cargo without the Bill of Lading for the following reasons:

- To maintain a cordial and business relationship with the customer.
- To reduce the unavailability of the containers.
- To avoid the destruction cost that would eventually fall on the Carrier in case the consignee has not taken delivery.
- The time and cost the carrier/ shipping line has to invest in claiming the detention and demurrage charges.

The carrier/ shipping line accept a document called the Letter of Indemnity in which the party including the consignee, delivery agent or any other accepts to indemnify the consignor in case of any

consequence that arise in the future.

Letter of Indemnity

It is common in a lot of trades, whether bulk or oil, to accept a Letter of Indemnity ("LOI") for non-production of bills of lading. A letter of indemnity (LOI) is a document which the shipper/ consignee indemnifies the shipping company against the implications of claims that may arise from the issue of a clean Bill of Lading when either the goods were not loaded in accordance with the description in the Bill of Lading or when the original document is not available.

It is absolutely essential that Members get the wording of the LOI right and ensure that proper procedures are in place to demonstrate compliance with the LOI. Members must also actively weigh up the counter party risk of accepting an LOI. An LOI is only as secure as the party providing it.

When this occurs, the carrier invariably agrees to deliver the cargo in consideration of receiving a Letter of Indemnity (LOI) from their charterer/ receiver. In many cases, a delivery of cargo in this way will proceed without incident. However, whilst the practice is familiar, familiarity can sometimes lead to complacency.

to be continued...

MARRIED OR SINGLE ?

One of the main things which spring to mind for most of our readers, during the recent festive New Year season, is family and friends. But for a growing number, the traditional setting of parents and family exchanging good wishes, eating and celebrating together has changed. There is a growing trend, across a majority of cultures, for people to either get married later or remain single.

This has caused questions to be asked as to why this is happening. Not least because it is easy for many of us to focus on the now and forget how we are arrived here. The belief that marriage was originally based on love is way off the mark. The traditions, responsibilities and implications of marriage have varied considerable across the centuries and in different parts of the world.

If we go back over ten thousand years the idea of a mother and father staying together for longer than a few years, after a baby was born, was rare. It was only later, with the advent of settling down and farming land, that staying together as a family unit evolved. This was because it was seen as a way of passing the fruits of labour onto others – your family. A sense of wanting children, and society needing the security of future generations also emphasised the desire for family. It will be the exception that proves the rule, to find parents that do not wish to pass on their property to their family, in order to hopefully make their children's life better.

Contrastingly current

statistics show a marked trend to stay single rather than getting married. If you Google 'Single vs Married' you'll find many videos and information that reflect this. However what is obvious; most of these Google results have been created by 'Millennials', people born between 1982 and 2004. They have grown up within the social media experience. Consequently it's probably true to say that they view marriage as falling somewhere between to these two quotes:-

'A successful marriage requires falling in love many times, always with the same person' – Mignon McLaughlin, international journalist and author.

'Marriage is a wonderful institution, but who wants to live in an institution?' – Groucho Marx, regarded as one of America's greatest comedians.

Millennials generally value independence, coupled with a desire to explore and achieve self-awareness. This means that pressures to 'settle-down' and start a family are not at the forefront of their thinking. Of course some of us will recall grandma's thoughts on this. 'If you are not married by the time you are thirty, then the chances are you'll never get married'. This concept was based on a belief that the single person will have become too set in their ways to want to change.

Because the single trend is recent and news always tends to reflect majority views, there has been a considerable amount of 'bad' stories about being single. Single people: -

Don't live as long as those who are married.

Birthdays and



festivals are lonely.

They can go weeks without any social plan. They are constantly depressed.

It turns out that most of the research for these statements was conducted before Millennials were born. More recent research does not sustain these facts as being correct. Indeed singles have a greater ability to expand their horizons. They don't have a responsibility to stay in one place, in order to look after their family. Couples though have joys denied to singles as they-

Are able to share loving experiences.

Are rewarded with their family growing-up.

Know troubles shared are troubles halved.

Can build-up memories and experiences together.

So when it comes to deciding which is better, the choice is really down to individual preference. It will depend on one's own personality and the influence of cultural background and upbringing. Across the years and all countries types of marriage, number of wives and partners, has always varied considerably. History

demonstrates that, over many generations, one style gradually gains greater recognition. Then, almost imperceptibly, it recedes amongst other choices.

What is clear is that being politically correct, in today's climate, is essential. Just try finding a joke about either being single or married. You'll soon run into difficulties about what you may say without causing offence. So as Kaleidoscope endeavours to be light-hearted, we'll conclude with an anonymous poem, about a party. The choice of being married or single we'll leave to you!

'I gave a little tea party this afternoon at three.

It was quite small, three

guests in all,

I, myself and me.

Myself ate all the sandwiches and I drank all the tea.

It was also I, who ate the pie and past the cakes to me.'

For better or worse, married or single, may you enjoy all your parties throughout New Year 2019.

Kaleidoscope desk

INBOUND

DUBAI

VESSEL	ALEXANDRIA	BAHRAIN	BANGKOK	BARCELONA	BREMEN	BUSAN	CHENNAI	DELHI	GENOA	GUANGZHOU	HONGKONG	ISTANBUL	KEELUNG	KOPER	NEW YORK	NHAVA SHEVA	NINGBO	QINGDAO	ROTTERDAM	SHANGHAI	SINGAPORE	SOUTHAMPTON	XIAMEN	XINGANG	JEBEL ALI	
WADI ALRAVAN	5-Jan																								19-Jan	
WADI ALRAVAN	12-Jan																									26-Jan
WADI ALRAVAN	19-Jan																									2-Feb
WADI ALRAVAN	26-Jan																									9-Feb
WADI ALRAVAN	2-Feb																									16-Feb
WADI ALRAVAN	9-Feb																									23-Feb
WADI ALRAVAN	16-Feb																									2-Mar
CEL JUMEIRAH		2-Jan																								5-Jan
CEL JUMEIRAH		9-Jan																								12-Jan
CEL JUMEIRAH		16-Jan																								19-Jan
CEL JUMEIRAH		23-Jan																								26-Jan
CEL JUMEIRAH		30-Jan																								2-Feb
CEL JUMEIRAH		6-Feb																								9-Feb
CEL JUMEIRAH		13-Feb																								16-Feb
COSCO KACHSIUNG			3-Jan																							23-Jan
COSCO AFRICA			10-Jan																							30-Jan
CSDL SPRING			17-Jan																							6-Feb
CSDL LONG BEACH			24-Jan																							13-Feb
COSCO PACIFIC			31-Jan																							20-Feb
TO BE ADVISED (OOCL)			7-Feb																							27-Feb
XIN BEIJING			14-Feb																							6-Mar
MSC RAVENNA				6-Jan																						28-Jan
MSC ROSA M				13-Jan																						4-Feb
MSC BARI				20-Jan																						11-Feb
MSC GENOVA				27-Jan																						18-Feb
MSC NEW YORK				3-Feb																						25-Feb
MSC VENICE				10-Feb																						4-Mar
MSC LONDON				17-Feb																						11-Mar
MAERSK SALTORO					4-Jan																					26-Jan
MAERSK STADELHOORN					10-Jan																					2-Feb
MAERSK GUATEMALA					18-Jan																					9-Feb
MAERSK GIBRALTAR					25-Jan																					16-Feb
MAERSK GUAYAGUIL					1-Feb																					23-Feb
MAERSK GENOVA					8-Feb																					2-Mar
MAERSK SARAT					15-Feb																					9-Mar
IAYMA						1-Jan																				26-Jan
OOCL MALAYSIA						8-Jan																				2-Feb
UNAYZAH						15-Jan																				9-Feb
OOCL EGYPT						22-Jan																				16-Feb
MALIK AL ASHTAR						29-Jan																				23-Feb
CSDL NEPTUNE						5-Feb																				2-Mar
UMM SALAL						12-Feb																				9-Mar
MOGRAL							5-Jan																			20-Jan
EVER DELIGHT							12-Jan																			27-Jan
VARADA							19-Jan																			3-Feb
ALS FIDES							26-Jan																			10-Feb
MOGRAL							2-Feb																			17-Feb
EVER DELIGHT							9-Feb																			24-Feb
VARADA							16-Feb																			3-Mar
TESSA								5-Jan																		12-Jan
MIRAMARIN								12-Jan																		19-Jan
EMIRATES DANA								19-Jan																		26-Jan
TO BE ADVISED (ESL)								26-Jan																		30-Jan
EMIRATES WAPA								2-Feb																		9-Feb
EMIRATES HANA								9-Feb																		16-Feb
EMIRATES SANA								16-Feb																		23-Feb
MSC LIVORNO									3-Jan																	31-Jan
MAERSK HAMBURG									11-Jan																	8-Feb
MSC AMSTERDAM									18-Jan																	15-Feb
MSC VALERIA									26-Jan																	22-Feb
MSC TARANTO									1-Feb																	1-Mar
MSC CLORINDA									8-Feb																	8-Mar
MSC PALOMA									17-Feb																	17-Mar
IAYMA										6-Jan																23-Jan
OOCL MALAYSIA										13-Jan																29-Jan
UNAYZAH										20-Jan																5-Feb
OOCL EGYPT										27-Jan																12-Feb
MALIK AL ASHTAR										3-Feb																19-Feb
CSDL NEPTUNE										10-Feb																26-Feb
UMM SALAL										17-Feb																5-Mar
WAN HAI 511											1-Jan															16-Jan
KOTA CAHYA											8-Jan															23-Jan
WAN HAI 513											15-Jan															30-Jan
WAN HAI 515											22-Jan															6-Feb
WAN HAI 517											29-Jan															13-Feb
COSCO HAMBURG											5-Feb															20-Feb
IAYMA											12-Feb															27-Feb
UASC YAS											4-Jan															22-Jan
CMA CGM BERLIOZ											11-Jan															29-Jan
XIN NING BO											18-Jan															5-Feb
AKINADA BRIDGE											25-Jan															12-Feb
ANOUJANI											1-Feb															19-Feb
RME TBN SHIP											8-Feb															26-Feb

ABOVE MENTIONED ARE TENTATIVE VESSELS AND ARE SUBJECT TO CHANGE. WE OFFER USA IMPORTS FROM CHARLESTON, HOUSTON, LOS ANGELES & NORFOLK
WE ALSO OFFER IMPORTS FROM SHENZHEN, TIANJIN, KUWAIT & KARACHI

INBOUND

DUBAI

VESSEL	ALEXANDRIA	BAHRAIN	BANGKOK	BARCELONA	BREMEN	BUSAN	CHENNAI	DELHI	GENOA	GUANGZHOU	HONGKONG	ISTANBUL	KEELUNG	KOPER	NEW YORK	NHAVA SHEVA	NINGBO	QINGDAO	ROTTERDAM	SHANGHAI	SINGAPORE	SOUTHAMPTON	XIAMEN	XINGANG	JEBEL ALI	
UASC VAS												15-Feb													5-Mar	
HYUNDAI PRIDE													5-Jan													21-Jan
HMM PROMISE													10-Jan													27-Jan
HYUNDAI VICTORY													17-Jan													3-Feb
HYUNDAI DREAM													24-Jan													10-Feb
HYUNDAI HOPE													31-Jan													14-Feb
HYUNDAI HONOUR													7-Feb													24-Feb
HYUNDAI DRIVE													21-Feb													10-Mar
MSC LAURENCE														4-Jan												25-Jan
MAERSK EUCORA														9-Jan												1-Feb
MAERSK EUREKA														16-Jan												8-Feb
MSC KATRINA														23-Jan												15-Feb
MAERSK EMDEN														30-Jan												22-Feb
MSC MARIA SAVERIA														6-Feb												1-Mar
MAERSK EXETER														13-Feb												8-Mar
MAERSK KINLOSS															5-Jan											2-Feb
MAERSK SELETAR															12-Jan											9-Feb
MAERSK CHICAGO															19-Jan											16-Feb
MAERSK PITTSBURGH															26-Jan											23-Feb
MAERSK ATLANTA															2-Feb											2-Mar
MAERSK DETROIT															9-Feb											9-Mar
MAERSK HARTFORD															16-Feb											16-Mar
MAERSK KYRENA																3-Jan										6-Jan
MAERSK KIMI																10-Jan										13-Jan
MAERSK LIMA																17-Jan										20-Jan
MAERSK KAMPALA																24-Jan										27-Jan
MAERSK KIEL																31-Jan										3-Feb
MAERSK KITHIRA																7-Feb										10-Feb
MAERSK KLAPEDA																14-Feb										17-Feb
YM PINE																	5-Jan									23-Jan
TO BE ADVISED (ONE)																	12-Jan									30-Jan
YM GREEN																	19-Jan									6-Feb
TO BE ADVISED (ONE)																	26-Jan									13-Jan
YM COSMOS																	2-Feb									20-Feb
YM PINE																	9-Feb									27-Feb
TO BE ADVISED (ONE)																	16-Feb									6-Mar
THAMA																		6-Jan								26-Jan
OOCL MALAYSIA																		13-Jan								2-Feb
URAVZAH																		21-Jan								9-Feb
OOCL EGYPT																		27-Jan								16-Feb
MAUK AL ASHTAR																		3-Feb								23-Feb
CSCIL NEPTUNE																		10-Feb								2-Mar
UMM SALAL																		17-Feb								9-Mar
MOL TREASURE																			8-Jan							23-Jan
MOL TRUIH																			15-Jan							30-Jan
MOL TRUST																			22-Jan							6-Feb
MOL TRADITION																			29-Jan							13-Feb
AL NEFUD																			5-Feb							20-Feb
BARZAN																			10-Feb							27-Feb
MOL TRIUMPH																			19-Feb							6-Mar
KOTA CAHAYA																				3-Jan						23-Jan
WAN HAI 513																				10-Jan						30-Jan
WAN HAI 515																				17-Jan						6-Feb
COSCO HAMBURG																				24-Jan						13-Feb
WAN HAI 517																				31-Jan						20-Feb
WAN HAI 511																				7-Feb						27-Feb
KOTA CAHAYA																				14-Feb						6-Mar
XIN ANGELES																				7-Jan						16-Jan
COSCO KACHUING																				14-Jan						23-Jan
COSCO AFRICA																				21-Jan						30-Jan
																				28-Jan						6-Feb
																				4-Feb						13-Feb
																				11-Feb						20-Feb
																				18-Feb						27-Feb
MOL TRUIH																							7-Jan			30-Jan
MOL TRUST																				12-Jan						6-Feb
MOL TRADITION																				19-Jan						13-Feb
AL NEFUD																				26-Jan						20-Feb
BARZAN																				2-Feb						27-Feb
MOL TRIUMPH																				9-Feb						6-Mar
THAMA																				16-Feb						13-Mar
EMIRATES DANA																								1-Jan		26-Jan
TO BE ADVISED (ESL)																										2-Feb
EMIRATES Wafa																								15-Jan		9-Feb
EMIRATES HANA																										16-Feb
EMIRATES SANA																										23-Feb
TO BE ADVISED (ESL)																										2-Mar
TESSA																										9-Mar
MIRAMARIN																										16-Mar
APL SALALAH																										5-Jan
APL QINGDAO																										12-Jan
APL DUBLIN																										7-Feb
APL BARCELONA																										19-Jan
APL SOUTHAMPTON																										14-Feb
APL YANGSHAN																										28-Jan
																										2-Feb
																										28-Feb
																										9-Feb
																										7-Mar
CMA CGM																										16-Feb
																										14-Mar

ABOVE MENTIONED ARE TENTATIVE VESSELS AND ARE SUBJECT TO CHANGE. WE OFFER USA IMPORTS FROM CHARLESTON, HOUSTON, LOS ANGELES & NORFOLK WE ALSO OFFER IMPORTS FROM SHENZHEN, TIANJIN, KUWAIT & KARACHI

OUTBOUND

DUBAI

VESSEL	JEBEL ALI	ABU DHABI	ALEXANDRIA	ACABA	BAHRAIN	BARCELONA	BEIRUT	CHENNAI	COCHIN	COLOMBO	DAMMAMI	DAR ESSALAMI	DELHI	FELIXSTOWE	HAMBURG	JEDDAH	KARACHI	KUWAIT	MOMBASA	NEWYORK	INHAVA SHEVA	PORT LOUIS	RIYADH	ROTTERDAM	SHARJAH	SINGAPORE	SCHAR	UMM QASR	
DIYALA	4-Jan	5-Jan																											
MS TIGER	11-Jan	12-Jan																											
DIYALA	18-Jan	19-Jan																											
MS TIGER	25-Jan	26-Jan																											
DIYALA	1-Feb	2-Feb																											
MS TIGER	8-Feb	9-Feb																											
DIYALA	15-Feb	16-Feb																											
MS TIGER	22-Feb	23-Feb																											
MAERSK KYRENIA	7-Jan		23-Jan																										
MAERSK KIVI	14-Jan		30-Jan																										
SANTA CRUZ	21-Jan		6-Feb																										
MAERSK KAMPALA	28-Jan		13-Feb																										
MAERSK KIEL	4-Feb		20-Feb																										
MAERSK KITHIRA	11-Feb		27-Feb																										
MAERSK KLAIFEDA	18-Feb		6-Mar																										
OSAKA TOWER	3-Jan			21-Jan																									
MAERSK BROOKLYN	10-Jan			28-Jan																									
UNI FLORIDA	17-Jan			4-Feb																									
NORTHERN DEPENDANT	24-Jan			11-Feb																									
OSAKA TOWER	31-Jan			18-Feb																									
MAERSK BROOKLYN	7-Feb			25-Feb																									
UNI FLORIDA	14-Feb			4-Mar																									
OEL JUMEIRAH	3-Jan				5-Jan																								
OEL JUMEIRAH	10-Jan				12-Jan																								
OEL JUMEIRAH	17-Jan				19-Jan																								
OEL JUMEIRAH	24-Jan				26-Jan																								
OEL JUMEIRAH	31-Jan				2-Feb																								
OEL JUMEIRAH	7-Feb				9-Feb																								
OEL JUMEIRAH	14-Feb				16-Feb																								
MAERSK KARLSKRONA	5-Jan					26-Jan																							
MAERSK SERANGOON	12-Jan					2-Feb																							
SEROJA ENAM	19-Jan					9-Feb																							
MAERSK SENANG	26-Jan					16-Feb																							
MAERSK SEMBAWANG	2-Feb					23-Feb																							
MAERSK KOTKA	9-Feb					2-Mar																							
MAERSK KYRENIA	7-Jan						24-Jan																						
MAERSK KIVI	14-Jan						31-Jan																						
SANTA CRUZ	21-Jan						7-Feb																						
MAERSK KAMPALA	28-Jan						14-Feb																						
MAERSK KIEL	4-Feb						21-Feb																						
MAERSK KITHIRA	11-Feb						28-Feb																						
MAERSK KLAIFEDA	18-Feb						7-Mar																						
VARADA	7-Jan							18-Jan																					
ALS FIDES	14-Jan							25-Jan																					
MOGRAL	21-Jan							1-Feb																					
EVER DELIGHT	28-Jan							8-Feb																					
VARADA	4-Feb							15-Feb																					
ALS FIDES	11-Feb							22-Feb																					
MOGRAL	18-Feb							1-Mar																					
VARADA	7-Jan								13-Jan																				
ALS FIDES	14-Jan								20-Jan																				
MOGRAL	21-Jan								27-Jan																				
EVER DELIGHT	28-Jan								3-Feb																				
VARADA	4-Feb								10-Feb																				
ALS FIDES	11-Feb								17-Feb																				
MOGRAL	18-Feb								24-Feb																				
VARADA	7-Jan									15-Jan																			
ALS FIDES	14-Jan									22-Jan																			
MOGRAL	21-Jan									29-Jan																			
EVER DELIGHT	28-Jan									5-Feb																			
VARADA	4-Feb									12-Feb																			
ALS FIDES	11-Feb									19-Feb																			
MOGRAL	18-Feb									26-Feb																			
COSCO OCEANIA	3-Jan										6-Jan																		
CARDONIA	5-Jan										8-Jan																		
TO BE ADVISED (COSCO)	10-Jan										13-Jan																		
BOMER HERMES	12-Jan										15-Jan																		
XIN LOS ANGELES	17-Jan										20-Jan																		
CARDONIA	19-Jan										22-Jan																		
COSCO KAHSIUNG	24-Jan										27-Jan																		
BOMER HERMES	26-Jan										29-Jan																		
COSCO AFRICA	31-Jan										3-Feb																		
CARDONIA	2-Feb										5-Feb																		
CSCI SPRING	7-Feb										10-Feb																		
JOGELA	4-Jan											14-Jan																	
BERMUDA	11-Jan											21-Jan																	
VIL DARDANELLES	18-Jan											28-Jan																	

ABOVE MENTIONED ARE TENTATIVE VESSELS AND ARE SUBJECT TO CHANGE. ALSO HAVE DIRECT SERVICES TO ISTANBUL

OUTBOUND

DUBAI

VESSEL	JEBEL ALI	ABU DHABI	ALEXANDRIA	AQABA	BAHRAIN	BARCELONA	BERUT	CHENNAI	COCHIN	COLOMBO	DAMMAM	DAR ES SALAM	DELHI	FELIXSTOWE	HAMBURG	JEDDAH	KARACHI	KUWAIT	MOMBASA	NEW YORK	NHAVA SHEVA	PORT LOUIS	RIYADH	ROTTERDAM	SHARJAH	SINGAPORE	SOHAR	UMM QASR
RHL CALLIDIAS	29-Jan											8-Feb																
LOUISE	1-Feb											11-Feb																
JOGELA	8-Feb											18-Feb																
BERMUDA	15-Feb											25-Feb																
VIL DARDANELLES	22-Feb											2-Mar																
FOLEGANROS	2-Jan												27-Jan															
OELTRANSWORLD	9-Jan												3-Feb															
OEL JUMEIRAH	16-Jan												10-Feb															
FOLEGANROS	23-Jan												17-Feb															
OELTRANSWORLD	30-Jan												24-Feb															
OEL JUMEIRAH	6-Feb												3-Mar															
FOLEGANROS	13-Feb												10-Mar															
MAERSK GENOA	6-Jan													1-Feb														
MAERSK SARAT	13-Jan													8-Feb														
DALI	20-Jan													15-Feb														
MAERSK SALTORO	27-Jan													22-Feb														
MAERSK STADELHORN	3-Feb													1-Mar														
MAERSK GUATEMALA	10-Feb													8-Mar														
MAERSK GIBRALTAR	17-Feb													15-Mar														
MAERSK GENOA	6-Jan														5-Feb													
MAERSK SARAT	13-Jan														12-Feb													
DALI	20-Jan														19-Feb													
MAERSK SALTORO	27-Jan														26-Feb													
MAERSK STADELHORN	3-Feb														5-Mar													
MAERSK GUATEMALA	10-Feb														12-Mar													
MAERSK GIBRALTAR	17-Feb														19-Mar													
XIN NING BO	1-Jan																8-Jan											
AKINADA BRIDGE	8-Jan																15-Jan											
AMOLJANI	15-Jan																22-Jan											
COSCO SINGAPORE	22-Jan																29-Jan											
UASC YAS	29-Jan																5-Feb											
CMA CGM BERLIOZ	5-Feb																12-Feb											
XIN NING BO	12-Feb																19-Feb											
BOMER HERMES	4-Jan																7-Jan											
CARDONIA	11-Jan																14-Jan											
BOMER HERMES	18-Jan																21-Jan											
CARDONIA	25-Jan																28-Jan											
BOMER HERMES	1-Feb																4-Feb											
CARDONIA	8-Feb																11-Feb											
BOMER HERMES	15-Feb																18-Feb											
SAFMARINE KURAMO	7-Jan																		9-Jan									
SAGITTARIUS	11-Jan																		13-Jan									
SAFMARINE KURAMO	14-Jan																		16-Jan									
SAGITTARIUS	18-Jan																		20-Jan									
SAFMARINE KURAMO	21-Jan																		23-Jan									
SAGITTARIUS	25-Jan																		27-Jan									
SAFMARINE KURAMO	28-Jan																		30-Jan									
SAGITTARIUS	1-Feb																		3-Feb									
SAFMARINE KURAMO	4-Feb																		6-Feb									
SAGITTARIUS	8-Feb																		10-Feb									
SAFMARINE KURAMO	11-Feb																		13-Feb									
JOGELA	4-Jan																		12-Jan									
BERMUDA	11-Jan																		19-Jan									
VIL DARDANELLES	18-Jan																		26-Jan									
RHL CALLIDIAS	29-Jan																		6-Feb									
LOUISE	1-Feb																		9-Feb									
JOGELA	8-Feb																		16-Feb									
BERMUDA	15-Feb																		23-Feb									
MIAMI TRADER	6-Jan																				29-Jan							
NORO	13-Jan																				5-Feb							
HELENE S	20-Jan																				12-Feb							
AS CYPRIA	27-Jan																				19-Feb							
CECILIE MAERSK	3-Feb																				26-Feb							
IRENES RYTHM	10-Feb																				5-Mar							
MIAMI TRADER	17-Feb																				12-Mar							
FOLEGANROS	2-Jan																					9-Jan						
OELTRANSWORLD	9-Jan																					16-Jan						
OEL JUMEIRAH	16-Jan																					23-Jan						
FOLEGANROS	23-Jan																					30-Jan						
OELTRANSWORLD	30-Jan																					6-Feb						
OEL JUMEIRAH	6-Feb																					13-Feb						
FOLEGANROS	13-Feb																					20-Feb						
MIAMI TRADER	6-Jan																						4-Feb					
NORO	13-Jan																						11-Feb					
HELENE S	20-Jan																						18-Feb					
AS CYPRIA	27-Jan																						25-Feb					
CECILIE MAERSK	3-Feb																							4-Mar				

ABOVE MENTIONED ARE TENTATIVE VESSELS AND ARE SUBJECT TO CHANGE. ALSO HAVE DIRECT SERVICES TO ISTANBUL

continued...page 20

VESSEL	JEBELALI	ABU DHABI	ALEXANDRIA	AQABA	BAHRAIN	BARCELONA	BEIRUT	CHENNAI	COCHIN	COLOMBO	DAMMAM	DARES SALAMI	DELHI	FELIXSTOWE	HAMBURG	JEDDAH	KARACHI	KUWAIT	MOMBASA	NEW YORK	NHAVA SHEVA	PORT LOUIS	RIVADH	ROTTERDAM	SHARJAH	SINGAPORE	SOHAR	UMM QASR		
IRENES RYTHM	10-Feb																					11-Mar								
MIAMI TRADER	17-Feb																						18-Mar							
COSCO OCEANIA	3-Jan																							10-Jan						
CARDONIA	5-Jan																							12-Jan						
TO BE ADVISED (COSCO)	10-Jan																							17-Jan						
BOMAR HERMES	12-Jan																							19-Jan						
XIN LOS ANGELES	17-Jan																							24-Jan						
CARDONIA	19-Jan																							26-Jan						
COSCO KAOSIUNG	24-Jan																							31-Jan						
BOMAR HERMES	26-Jan																							2-Feb						
COSCO AFRICA	31-Jan																							7-Feb						
CARDONIA	2-Feb																							9-Feb						
COSCO SPRING	7-Feb																							14-Feb						
BOMAR HERMES	9-Feb																							16-Feb						
MAERSK GENOVA	6-Jan																							10-Feb						
MAERSK SARAT	13-Jan																							17-Feb						
DAU	20-Jan																							24-Feb						
MAERSK SALTORO	27-Jan																							3-Mar						
MAERSK STADELHORN	3-Feb																							10-Mar						
MAERSK GUATEMALA	10-Feb																							17-Mar						
MAERSK GIBRALTAR	17-Feb																							24-Mar						
DIYALA	4-Jan																								5-Jan					
MS TIGER	11-Jan																								12-Jan					
DIYALA	18-Jan																								19-Jan					
MS TIGER	25-Jan																								26-Jan					
DIYALA	1-Feb																								2-Feb					
MS TIGER	8-Feb																								9-Feb					
DIYALA	15-Feb																								16-Feb					
COSCO HAMBURG	4-Jan																									19-Jan				
BARBARA	7-Jan																									22-Jan				
WAN HAI 517	11-Jan																									26-Jan				
EVER DECENT	14-Jan																									29-Jan				
WAN HAI 511	18-Jan																									2-Feb				
MALAKOS	21-Jan																								5-Feb					
KOTA CAHAYA	25-Jan																								9-Feb					
EVER DELUXE	28-Jan																									12-Feb				
WANHAI 513	1-Feb																								16-Feb					
KOTA LAVAR	4-Feb																								19-Feb					
WANHAI 516	8-Feb																								23-Feb					
BARBARA	11-Feb																								26-Feb					
HEBE	4-Jan																											5-Jan		
OEL EMIRATES	8-Jan																											9-Jan		
HEBE	11-Jan																											12-Jan		
OEL EMIRATES	15-Jan																											16-Jan		
HEBE	18-Jan																											19-Jan		
OEL EMIRATES	22-Jan																										23-Jan			
HEBE	25-Jan																										26-Jan			
OEL EMIRATES	29-Jan																										30-Jan			
HEBE	1-Feb																										2-Feb			
OEL EMIRATES	5-Feb																										6-Feb			
HEBE	8-Feb																										9-Feb			
OEL EMIRATES	12-Feb																										13-Feb			
IRENES RELIANCE	1-Jan																												3-Jan	
IRENES RELIANCE	8-Jan																												10-Jan	
IRENES RELIANCE	15-Jan																												17-Jan	
IRENES RELIANCE	22-Jan																												24-Jan	
IRENES RELIANCE	29-Jan																												31-Jan	
IRENES RELIANCE	5-Feb																											7-Feb		
IRENES RELIANCE	12-Feb																											14-Feb		
IRENES RELIANCE	19-Feb																											21-Feb		



QUOTABLE QUOTES

On the mountains of truth, you can never climb in vain: either you will reach a point higher up today, or you will be training your powers so that you will be able to climb higher tomorrow

- Friedrich Nietzsche

For once you have tasted flight you will walk the earth with your eyes turned skywards, for there you have been and there you will long to return

- Leonardo da Vinci

Great ambition is the passion of a great character. Those endowed with it may perform very good or very bad acts. All depends on the principles which direct them

- Napoleon Bonaparte

UNIQUE JOINT VENTURE BETWEEN DP WORLD AND SMS GROUP TO REVOLUTIONISE GLOBAL PORT LOGISTICS

■ DISRUPTIVE TECHNOLOGY TO RADICALLY IMPROVE OPERATIONS



World's first high bay container storing system to be ready for 2020 World Expo in Dubai

Dubai, UAE/Dusseldorf, Germany, 17 December 2018: An international joint-venture formed by global trade enabler DP World and industrial engineering specialists SMS group will revolutionize the way that containers are handled in ports. A new and intelligent storing system will be applied for the first time ever at Jebel Ali Terminal 4, in time for the Dubai Expo 2020 world fair.

The High Bay Storage system was originally developed by SMS group subsidiary AMOVA for round the clock handling of metal coils that weigh as much as 50 tons each in racks as high as 50 metres. AMOVA is the first company to transfer this proven technology to the port industry.

Instead of stacking containers directly on top of each other, which has been global standard practice for decades, the system places each container in an individual rack compartment. Containers are stored in an eleven-story rack, creating 200 percent

more capacity than a conventional container terminal, or creating the same capacity in less than a third of the space.

Thanks to the rack's design each container can be accessed without having to move another one, enabling 100 percent utilization in a terminal yard. The system brings big gains in speed, energy efficiency, better safety and a major reduction in costs. Costs are further cut by the ability to shorten the time taken to load and unload mega-ships by as much as 30 percent.

Sultan Ahmed Bin Sulayem, DP World Group Chairman and CEO, said: "DP World's experience and expertise in moving cargo coupled with the technology of AMOVA will ensure the system is remarkably efficient and relevant for present and future operations. As a world first in our industry we are tremendously excited by its potential and groundbreaking features. Our engagement in new technologies is a major priority and we have become known for seeking ways that transform the way goods are moved across the world. Innovation is part of our DNA and at the heart of our success."

موانئ دبي العالمية
DP WORLD

Burkhard Dahmen, CEO of SMS Group, said: "Our subsidiary AMOVA has optimized this technology in industrial applications for the metals industry over several decades. The application for container terminals is a direct result of our "New Horizon" strategy, in which SMS transfers technology from the metallurgical sector to other industries."

Dr. Mathias Dobner, CEO of the joint venture, said: "This new container handling technology allows cities to use their expensive and sensitive land and waterfront areas more effectively. Our system will significantly increase the productivity of handling ships on the quay. This means that quay walls can be shortened by a third. This disruptive innovation will greatly improve the financial performance of container ports, and well as their overall appearance."

Source : DP World Press Release

T S Kaladharan Chairman
Ajay Krishnan COO - Freight forwarding
Chandrakala (CK) COO - NVOCC
Arjun Bose Director - CSS Abu Dhabi, Qatar, Oman, Sharjah & Sri Lanka

Ahmed Al Rais Senior V P - Air Freight
Sreenath V V P - Operations & Projects
Siby C Kurian V P - Sales & Marketing
Narayan Tagore Senior GM - CSS Bahrain

INDIA

Rajesh Arora Vice President - North India
Rahat Talreja Vice President- Central India



MIDDLE EAST

www.cssgroupsite.com

Consolidated Shipping Service L.L.C.

P.O.Box 61334, Jebel Ali (Opposite LOB-8)

Regional Head Quarters

Dubai, Tel : +971 4 8831303, Fax : +971 4 8831312
 Email : info@cssdubai.com

CFS – Container Freight Station

Dubai, Tel : +971 4 8872333, Fax : +971 4 8872335
 Email : cfsoperations@cssdubai.com

SCM – Supply Chain Management

Dubai, Tel : +971 4 8831303, Fax : +971 4 8831312
 Email : info@fmclogistics.net

Dubai International Airport Cargo Gateway (Dubai Cargo Village)

P.O. Box 27802, Dubai, UAE, Tel: +971 4 2826176, Fax: +971 4 2826179
 Email: info@cssdubai.com

Consolidated Shipping Services L.L.C. Abu Dhabi

P.O. Box 32454, Abu Dhabi, UAE, Tel: +971 2 6431717, Fax: +971 2 6431919
 Email: info@cssabudhabi.com

Consolidated Shipping Services W.L.L. Bahrain

P.O. Box 2209, Manama, Bahrain, Tel: +973 17540106, Fax: +973 17540107
 Email: info@csibahrain.com

CSS Homeward Bound

P.O. Box 27802, Warehouse No. 801-WH11, Al Quoz Industrial first, Dubai,
 Tel: +971 4 3217388, Fax: +971 4 2223445
 Email : info@csshomeward.com

Console Shipping Services W.L.L. Qatar

P.O.BOX 55537, Al Matar Centre, Old Airport Road, Doha, Qatar
 TEL : +974 4 4111318, FAX: +974 4 4111319
 Email : info@cssqatar.com

Comprehensive Consolidated Trade and Shipping L.L.C. Oman

P.O Box 815, 117, First Floor, Building A, Hatat Complex,
 Wadi Adai, Muscat, Sultanate of Oman, Tel: +968 2 456 6 094, Fax : +968 2 4566093
 Email: info@cssmuscat.com

CSS Kingston Logistics FZC Sharjah

P.O.Box 513258, SAIF Zone, Sharjah, UAE, Tel: +971 6 5575111,
 Fax: +971 6 5575222
 Email : info@csskingston.com

Consolidated Shipping Services L.L.C. Saudi Arabia**Dammam Head Office**

1st Floor, Al Sunaid Bldg., King Khalid St., Thubaishi, P.O. Box 9580, Dammam 31423
 Tel: +966-13-8333636, Fax: +966-13-8320533, Email : info@csssaudi.com

Riyadh Branch

2ND Floor, Al Selouly Bldg., Jareer St., Malaz, PO Box 14051, Riyadh 11422
 Tel: +966-11-2063111, Fax: +966-11-2921260, Email : info@csssaudi.com

Jeddah Branch

Suite 20, Hael Commercial Center, Hael St., PO Box 52143 Jeddah 21563
 Tel: +966-12-6427330, Fax: +966-12-6437220, Email : info@csssaudi.com

Consolidated Shipping Services Lanka (Pvt) Ltd.

20, 1/2 (1st Floor), Lauris Road, Bambalapitiya, Colombo 04, Sri Lanka
 Tel: +94 11 2555 442, Email: info@csslanka.com

INDIA

Console Shipping Services India Pvt. Ltd. – Bangalore

Suite 305, III Floor, Sophia's Choice, No.7, St. Mark's Road, Bangalore - 560001
 Tel: +91 80 22133011, Fax: +91 80 421110133
 Email: mailblr@cssindiagroup.com

Console Shipping Services India Pvt. Ltd. – Chennai

Door No. 151, New Corporation Door No. 132, First Floor
 "Gee Gee Emerald" Commercial Complex, Valluvarkottam High Road
 Nungambakkam, Chennai 600 034,
 Tel : 044 28171511/ 28174512/ 28173481/ 28170515
 Email: mailchennai@cssindiagroup.com

Console Shipping Services India Pvt. Ltd. – Cochin

Ground Floor, CCHAA Building, Indira Gandhi Road, W / Island, Cochin - 682009,
 Telefax: +91 484 2667693 / 2667698
 Email: mailcochin@cssindiagroup.com

Console Shipping Services India Pvt. Ltd. – Coimbatore

No.110, Rajpriya Avenue, #41-A&B, Avinashi Road,
 Civil Aerodrome Post, Coimbatore- 641014 / INDIA, Tel : +91 422 4394142
 Email: ctrj@cssindiagroup.com

Console Shipping Services India Pvt. Ltd. – Delhi

A 35, Upper Ground Floor, FIEE Complex, Ma Anandmayee Marg
 Block A, Okhla Phase II, Okhla Industrial Area, New Delhi, Delhi 110020
 Tel: +91 11 40589900, Fax: +91 11 40589988
 Email: maildelhi@cssindiagroup.com

Console Shipping Services India Pvt. Ltd. - Kolkata

Srishti, 3rd floor, flat 3B, 12, Ho-Chi-Minh Sarani, Kolkata - 700071
 Mobile : +91 9830295152, Tel: 03346014171, Fax : 03346014171
 Email: mailkolkata@cssindiagroup.com

Console Shipping Services India Pvt. Ltd. - Ludhiana

Room No. 102, venus House, Street no. 09, Jeevan Nagar
 Focal Point, Ludhiana-141010
 Mob: +91 8284052138, Tel: +91 1615080138
 Email: meena@cssindiagroup.com

Console Shipping Services India Pvt. Ltd. – Mumbai

Suite # 102, First Floor, Sai Samarth Building, Deonar, Mumbai - 400088
 Tel: +91 22 42212800, Fax: +91 22 42212899
 Email: mailmumbai@cssindiagroup.com

Console Shipping Services India Pvt. Ltd. – Tirupur

NO:7/5,Ganga Nagar, 2nd Street, "MY CAPS" Building 3rd Floor
 Behind Hotel Angel, Tirupur-641 602.
 Tel: +91 421 2236025/2236302, Fax:+91 421 4332347
 Email: mailtirupur@cssindiagroup.com

Console Shipping Services India Pvt. Ltd. – Tuticorin

No. 5A/179G, Caldwell Colony, 2nd Street [West], Tuticorin - 628008
 Tel/ Fax : 0461 2377088, Mobile. +91 8220009788
 Email: mailtuti@cssindiagroup.com

ASSOCIATES

Consolidated Shipping Services W.L.L. – Kuwait

Suhair Commercial Centre, Opp. Sharq Fire Station, 1st Floor
Al-Hilali Street, P.O. Box 12075, Shamiya 71651, Kuwait.
Tel +965 2249 3957, +965 22493960
Fax +965 2249 3956

Abdulrahman Amin
Dean Landers

Gr. General Manager
General Manager

abdulrahmanamin@csskuwait.com
dean@csskuwait.com

Hindustan Shipping & Clearing House

Ground Floor, CCHAA Building, Indira Gandhi Road, W/ Island,
Cochin - 682009 Telefax: + 91 484 - 2667693/ 98

Latha Ashokan

Branch Manager

latha@cssindiagroup.com

CSS Pakistan Private Limited

Corporate Head Office (Karachi)

Suite # 1201-1202, 12th Floor, Emerald Tower
Plot G-19, Block # 5, Main Clifton Road, Opposite 2 Talwar
Karachi-74000, Pakistan
Tel: +92-21-35157921-3, Mob: +92-345-2007530
Fax: +92-21-35157934, Email: info.khi@css-pk.com

Muhammad Asghar Malik

asghar@css-pk.com

Lahore Branch

Office # D-1001, 10th Floor, City Tower, 6-K Main
Boulevard Gulberg-II, Lahore - Pakistan
Tel: +92-42-35788788, Mob: +92 345-2007526
Fax: +92-42-35788979, Email: info.lhe@css-pk.com

Mudassar Bashir

mudassar.bashir@css-pk.com

Sialkot Branch

Suite B4, 1st Floor, Jawed Centre
Main Defense Road, Silakot, Pakistan
Tel: +92-52-3250744, Fax: +92-52-3258049
Email: info.skt@css-pk.com

Muhammad Nasir

m.nasir@css-pk.com

Islamabad Branch

Suite# 12, VIP Square, 1-8 Markaz, Islamabad, Pakistan
Tel: +92-51-4861147 - 8, Mob: +92-345 2009954
Fax: +92-51-4861149, Email: info.isb@css-pk.com

Arshad Mehood

a.mehmood@css-pk.com

Multan Branch

Suite # 1, 3rd Floor, Trust Plaza
LMQ Road, Multan, Pakistan
Tel: +92-61-34785027, Mobile No: +92-345-2007530
Fax: +92-61-34785028, Email: info.mux@css-pk.com

Muhammad Asghar Malik

asghar@css-pk.com

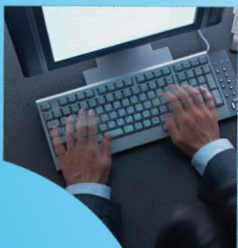
Faisalabad Branch

Suite P-47, Chenab Market, Madina Town
Faisalabad, Pakistan
Tel: +92-41-8549890, Fax: +92-41-8723381
Email: info.fsd@css-pk.com

Muhammad Naeem

m.naeem@css-pk.com

For a detailed contact list, please email marketing@cssdubai.com



YOUR TRUSTED SHIPPING & LOGISTICS COMPANION

Modules include

- ✓ Finance and Fixed Assets
- ✓ WHIMS (Warehouse Inventory Management)
- ✓ HRMS
- ✓ Payroll
- ✓ Freight Forwarding
- ✓ General Module
- ✓ WEWMS (Web enabled warehouse management system)

mail@fins.in

General features of the software include

- ✓ Facility to manage Multi company/ division or branch activities
- ✓ Portal enabled system
- ✓ Easy online help available with each module.
- ✓ Customisable theme settings
- ✓ Customizable reports
- ✓ Electronic authorization and document processing
- ✓ User/ Group level security features
- ✓ Transaction based audit trail
- ✓ Data transfer facility (EDI)
- ✓ Customizable parameters

www.fins.in

Moving never looked so easy



We can do

- ✓ Worldwide packing & moving of personal effects
- ✓ Local & International relocations
- ✓ Customs clearance & door to door service
- ✓ Transportation
- ✓ Pet relocation
- ✓ Fine art relocation
- ✓ Express baggage

You can avail

- ✓ 2 hours maid service
- ✓ 1 day free handy man
- ✓ Airport pick up and drop off

The above service will be available for 90 days from the move date

CSS

Homeward Bound

MOVING & RELOCATION • INDUSTRIAL PACKING & LASHING • STORAGE & SELF STORAGE

www.csshomewardbound.com | Toll Free 800 CSS (277) | info@csshomeward.com