

LIGHTHOUSE

ONBOARD CMA CGM KERGUELEN

Vessel Visit by CSS on the 40th
Anniversary of CMA CGM

UNCOMPROMISED PROFESSIONALISM

CSS Kingston- A Success story from Sharjah

A GRAND GET TOGETHER

Warehouse Staff
party at CSS



PROJECTS OIL & ENERGY



Consolidated Shipping Services L.L.C.

P.O.Box 61334, Jebel Ali, Dubai, UAE

Tel : +971-4-8872333, Fax: +971-4-8872335

Email : infoprojects@cssdubai.com



LIGHTHOUSE

CHAIRMAN'S MESSAGE



T S Kaladharan

As usual October is a vibrant month for the CSS Sales because it is when they specifically focus on their internal preparations, for the forthcoming Strategy Meet. The last 22 years have seen similar processes and preparations but, as always, our people display an enthusiastic spirit in their planning and actions. Consequently, the time of the year has arrived for all of us, at CSS, to sit together and

review what we have achieved through our previous strategy and formulate new key plans to move ahead.

By carefully analysing the current business climate there is reason to be optimistic because there are some welcome upbeat indicators. The world business scenario is progressing in a way that justifies our confidence for the months ahead. To take advantage of these positive changes, we need to better equip ourselves with invigorated stratagems and programmes. It's almost needless to say, that our annual Strategy Meet has always played a pivotal role in formulating novel and ingenious ideas for action. Once again, I encourage, and anticipate, innovative concepts and proposals being originated within our discussion at the Strategy meet.

Looking more immediately to the future, it's indeed a pleasure to be able to announce that CSS operations will be commencing soon from Colombo in Sri Lanka. Expanding our services, and as a consequence our horizons, are events which make aspirations come true. By sailing forward, in such a manner, we are expanding our horizons in a way which will turn our corporate dreams into reality. Our future is looking bright.



Lighthouse is produced by the CSS Group's Corporate Communications & Marketing Department

Editor : **Unnikrishan G**

Graphic Designer : **Jeeson Bosco**

Printed at : **Anaswara offset Pvt. Ltd.**

For enquiries and suggestions:

communications@cssgroupsite.com

Download Lighthouse online at **www.cssgroupsite.com**

FOR PRIVATE CIRCULATION ONLY

The opinions and views contained in this magazine are not necessarily those of the publisher. Lighthouse cannot accept any liability for the inclusions or omissions, news and views expressed in this magazine. Readers are advised to seek expert opinion before acting on any information contained here.

CONTENTS



- 4 CSS Kingston Logistics
- 5 Visit to CMA CGM Kerguelen
- 6 Projects @ CSS
- 7 Warehouse Staff Party
- 8 Perspective by Francois Wolberg
- 9 Marketing at CSS
- 11 Analysis by Rajesh Arora
- 12 DP World News
- 13 Opinion by Rahat Talreja
- 14 Professional Talk
- 15 Kaleidoscope
- 16 Sailing Schedule
- 22 Contacts & Addresses



7

12

UNCOMPROMISED PROFESSIONALISM

■ CSS KINGSTON- A SUCCESS STORY FROM SHARJAH



The joint venture initiative of CSS Group and Kingston Holdings, CSS Kingston Logistics is sailing through its third year of operations successfully. With its strategic positioning inside the SAIF zone, CSS Kingston Logistics FZC (CKL), has got a significant role when it comes to service catering to the Northern Emirates region.

Initial focal area of CKL was Storage and warehousing within the SAIF Zone, however the company has grown to become the only authorised 3PL service provider today in the whole free zone area, with 110,000 Sq. ft racked facility. The racked space and infrastructure also comprise of a temperature-controlled area of 37,000 Sq. ft as well which is in high demand when it comes to storage of perishable items, furniture

and other general commodities.

Catering to the Northern Emirates has never been so easy for CSS Group, till they had CSS Kingston in the right place. The fully integrated Supply chain processes, reverse logistics and the 3PL facilities within the system is controlled by highly experienced hands to ensure zero chaos. More than 15,000 CBM of cargo storage can easily be managed within the racked facilities of CKL.

“We know that the heart and soul of a successful business is a well-designed supply chain. The efficiency of product fulfilment throughout the shipping process is what drives revenue and increases your bottom line. Hence, we are committed to provide the

highest quality 3PL services to our customers always” mentioned Thomas Mathew, Branch Manager, CKL.

Projects and over dimensional cargo go to the CKL open yard, a sprawling 45,000 Sq. ft, interlocked facility within the SAIF Zone. Well defined processes and infallible security system ensures a safe storage of your cargo here. The documentation division of CKL can manage Customs clearance in SAIF zone, Sharjah Aviation Services (SAS), Khorfakkan, Sharjah ICD, Sharjah Port (Khalid Port), thereby providing an enjoyable end- to end service to their clients. The well reputed names in the list of clients of CSS Kingston Logistics is an endorsement to their uncompromised professionalism in the area which they operate.

ONBOARD CMA CGM KERGUELEN

■ VESSEL VISIT BY CSS ON THE 40TH ANNIVERSARY OF CMA CGM

What do we know about a cargo vessel?

We have only seen them sailing in the far away horizons. Some of us had seen the containers being loaded onboard the vessel. Anything more?? There ends the experience of most of us. CSS COO for NVOCC, Chandrakala (CK) and Manager, Special Projects, Anitha Jaikrishnan got lucky recently with a unique Cargo vessel visit experience. That too to a prestigious vessel like CMA CGM Kerguelen, one of the biggest amongst the CMA fleet. This unique visit happened when CMA CGM invited both of them to visit their vessel, as part of celebrating the 40th anniversary of the company. CK mentioned it as one of the greatest opportunities she got in her career recently. She continued that in order to maintain a solid understanding of the Cargo vessel and the staff on board, it is necessary that we must visit them at their place and understand the operations and its challenges. Anitha was also in the affirmative. The visit unveiled the opportunity to watch and understand the cargo vessel operation more closely. They met the Captain and other crew members, who described the container movements they manage. CMA CGM Kerguelen is amongst the largest container ships in the world and has overall length of 398 m (1,306 ft), moulded beam of 54 m (177 ft) and maximum draft of 16.0 m (52.5 ft). The cargo ship has deadweight of 185,000 DWT and gross tonnage of 175,000 GRT with capacity for 17,722 TEU. CMA CGM is celebrating their 40th



anniversary in 2018 for which a logo has also been released. CSS Group relationship with CMA is an evolving one and has seen an exponential growth in the last 4 years. During this special occasion, CSS Group congratulates CMA CGM family for their anniversary and wish them all success in the future.



Jebel Ali to Jakarta

WINDER MACHINE AND EQUIPMENT FOR TREATING MATERIALS, MOVED BY CSS PROJECTS



Projects team at CSS Dubai headed by Sreenath, VP Projects handled movement of Winder Machine and Equipment for Treating Materials, recently. The details of the project move were shared with Lighthouse by the Team leader. The cargo was moved from Jebel Ali to Jakarta with much preparations in hand for a hassle-free job completion. The cargo volume totalled 1400 FT with SOC, OOG on Flat racks and break-bulk items.

“Handling multiple items on a single project always poses an exciting challenge. Moreover, it’s a great opportunity to prove your efficiency in the subject. All credit to our onsite team headed by Ratheesh, Projects supervisor, who enjoyably engaged with each and every moment

till completion” commented Sajith Vijayan, Manager CSS Projects in Dubai.

The scope of work included Anticorrosion coating, shrink wrapping, Tarpaulin wrapping, Crating and packing as per the item requirement, the cargo loading and stuffing from the shipper yard, Lashing and securing of cargo onto flat racks & Transportation to Jebel Ali port. The scope also included all documentation and customs formalities.

The experienced CSS projects team conducted the required cargo survey and did a detailed study of scope prior to the commencement of the move. Each point of the entire project was carefully assessed to ensure a reliable and smooth journey of the

cargo. CSS Group Projects Senior Vice President Raj George congratulated the team on the successful and timely accomplishment of the project.

Air Cargo to Lagos

PROJECT CARGO MOVEMENT FROM DUBAI TO LAGOS



Details of an Air Project Cargo movement was released by the Projects team of CSS Dubai. The cargo movement was executed to Lagos. The movement was successfully handled and completed by the team, specialised in Air Cargo Projects handling. 22 tons of Steel plates and pipes were air freighted from Dubai to the African destination.

“Hands on experience is an indispensable factor for a successful Air Cargo Project completion. Extensive Knowledge about the airline requirements and packaging specifications gives an edge for CSS Projects team when such need steps in” said Sreenath V, Vice President, Operations & Projects, CSS Group.

The scope of work included, collection and packing of the cargo as per airline guidelines and executing the air freight to the destination. Timely follow up with the airline companies and updating the client about the status of the cargo in regular intervals becomes crucial to keep the movement robust. The assistance from the air freight department at CSS Dubai needs a special mention here. They have done a commendable job in successfully executing this project.

The successful completion of this air project cargo movement has once again proved the trustworthiness of the Projects division of CSS Group, who have already in its kitty a long list of renowned Project cargo movements in the Middle East over the last two decades.

A GRAND GET TOGETHER

WAREHOUSE STAFF PARTY AT CSS



The warehouse staff of CSS Group from the entire UAE region recently joined together for a party. The get together was organized at the banquets, Fortune Plaza Hotel, Dubai. CSS Management was represented by Ajay Krishnan, COO, Freight forwarding, Anil Kumar Director Finance, Sreenath.V, Vice President, Operations & Projects and Susanth Shekar, Manager, HR & Admin at the function.

The party witnessed some delightful dance and music performances from the staff side. The cultural activities were combined with games and lucky draws which intensified the party mood. Occasional get togethers often embolden the relationship between the

staff amongst themselves and with the management. CSS Group has always been particular in organizing employee engagement programmes and staff parties to maintain a cordial relationship within the company.

The vendors of CSS, as always participated the event with generous contributions in the form of gifts to be distributed to the winners of games. Lucky draw winners walked away with cash prizes organized by the CSS Management.

A special thank you goes out to all the staff who helped organize this grand evening and participated the event, without their assistance the evening would not have been such a success.



“Why do we embrace this industry and what keeps us going?”



FRANCOIS WOLBERG

Director
Global Textile Logistics (GTL)
C.H. Robinson

Like many of us, I came to this industry by chance. Since I was a young & living in France, I have always traveled; I was first intrigued by the USA, then Israel, Morocco, and Europe. I began my career in sales, selling Moroccan freight services for an Italy-based company. I never expected to spend the next 26 years in the shipping industry, working on five continents and traveling to more than 50 countries. In addition to my

native France, I have lived in Morocco, Italy, Tanzania, Egypt and now the USA. As the years went by while working for various companies I learned every facet of freight forwarding and developed country-specific and industry-specific skills. I found my niche by applying the science of freight forwarding specifically to the Textile Industry, which fascinates me. This industry focus is a vertical approach that works well in our industry. Textile clients love and appreciate services tailored to fit their unique transportation needs!

Despite the technology which seems to infiltrate every aspect of our lives, logistics is still considered very archaic and old-fashioned when it comes to how we approach clients. This can be a great thing in a way because it allows us to personally communicate with our clients face to face and develop relationships, something crucial for success in the industry. Also, it's incredible to consider that we are using Ocean containers, Airplanes, Warehouses, Trucks, & Trains much in the same way we did decades ago. Not much has changed since we invented the first container ship in 1956 (62 years ago). This is a fascinating industry built on years of stability, and a great

industry in which to have a career - especially if you like traveling and working with people all over the world.

If you are the type of person who likes to be challenged every single day I can promise you that your customers, colleagues, and suppliers will fulfill that need. As we say in our industry “We are only as good as our last shipment!” The International Freight Forwarding Industry fills a great need for the international marketplace. As long as people are buying and selling goods across the world, there will be jobs and opportunities for us all.

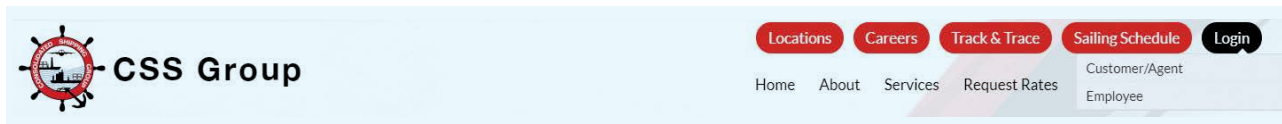
I encourage you to embrace this industry and find your own niche within. Every day is different and I can guarantee you that having a career in this exciting industry will keep you motivated and provide great career opportunities. Simply put, this industry is fun and rewarding. I will share a little secret with you - Always think Monday is your first day at the office; be curious, excited and ambitious and your journey will be a wonderful one.

Stay well. Until the next Chronicle...



Customer Portal

CSS Group Portal updates its feature



As part of providing advanced, user friendly features for the customers of CSS group, the CSS IT department constantly update the group portal. The IT department has released details of a latest update made on the Customer Login interface. Customers are provided with username & password. Upon login they can view their **Routing Order**, shipments can be tracked using **Track & Trace** module with HBL and HAWB. Presently the feature is active for the Dubai customers. All updates related with the same will be informed by the IT department on a regular basis.

Utilize Our Features \Rightarrow [Track & Trace](#) [Import Routing Order](#)

MARKETING AT CSS



The CSS Group has a new *digital* face!

We revamped the corporate website earlier this year to make it look like what it does today - new designs built from scratch, easier navigation to see what its respective CSS branches are doing and more. Visit the website and find out more features like Track & Trace! It's #TimeToEvolve.

Activating CSS HWB online!

Earlier this year, HWB stepped out of the shadows and introduced themselves in the online world through their #MovingEmotions campaign. We got their Facebook channel up and running, encouraged the staff to capture moments through their newly acquired tablets, and brought down bits of paper work by digitizing docs straight into Google Drive. Plus point: they'll be launching their outdoor advertisement campaigns on the 1st of November, 2018!

#movingemotions



Our Social Media Hub is LIVE!

Online presence is super important, even if we are a logistics and freight forwarding corporation. We brought together our revamped Facebook, Twitter and LinkedIn pages onto ONE platform for you to quickly peruse.



DUBAI NVOCC LCL Export Services

PORT LOUIS

MOMBASA

AFRICA

DJIBOUTI

DAR ES SALAM

ALEXANDRIA

Don't forget to
check with us for
worldwide
destinations



CSS DUBAI

Consolidated Shipping Services L.L.C.

Tel: +971 4 8831303, Ext:2, Fax: +971 4 8831312
nvo-export@cssdubai.com

www.cssgroupsite.com

WAREHOUSING IN INDIA

Rajesh Arora
Vice President - CSS North India



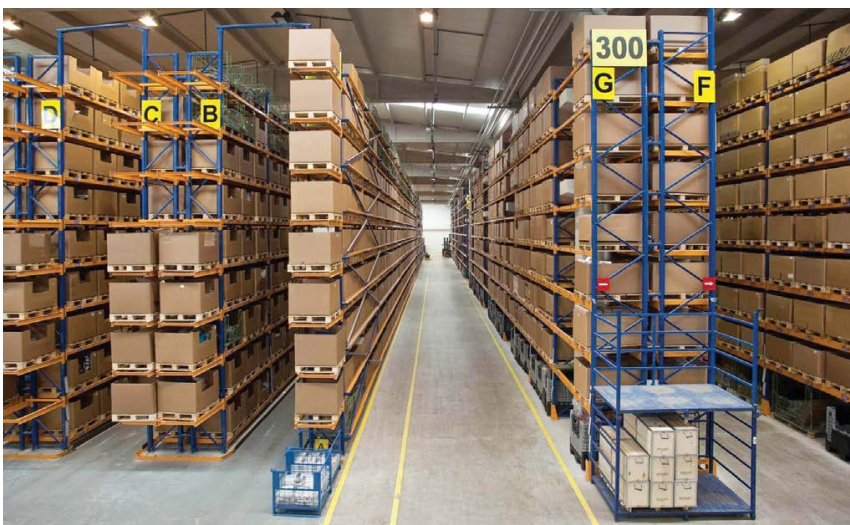
Warehousing industry in India is one of the prominent market segments in total Logistic Sector. Implementation of GST & various E commerce as the two important factors that have created significant growth prospects for the warehousing sector in India. Experts claim a total of approximately 43,000 Crore rupees investment scope by 2020 in this sector. There are various factors which helps warehousing sector to boost to its peak in Indian market.

1. Growing manufacturing activity under "MAKE IN INDIA" campaign driven by current government
2. Rising domestic consumption
3. Increasing International trade
4. Increasing in Organic harvesting
5. Growing investment of Indian & foreign in warehousing infrastructure
6. Ease of Government rules is last but not the least

In present scenario the warehousing industry is approximately 560,000 crore rupees excluding inventory carrying cost which amount to

another 4340 thousand crore rupees with a minimum growth of 10% annually. The industry although is facing a lot of difficulties due to improper cargo flows, improper infrastructure, limited capability of carrying capacity so on and so forth. Industrial / retail warehousing is major contributor in total warehousing industry with its 55% of total market share followed by 14% - 15 % Share by CFS/ICD, Agri warehousing & Cold store. Industrial Warehousing is approximately 310 thousand crore rupees market with a basic growth of 10-12% in recent past. Some major players in Industrial warehousing are DHL, Safeexpress, Continental warehousing, Indo Arya, All Cargo etc. Agri warehousing accounts 15% of total market share with an annual growth of 9-10 % in past few years mainly due to growing annual agriculture production, standardized warehousing operations as per Warehousing development & regulation act, subsidy scheme & Tax Incentive. Key players in Agri warehousing are Food Corporation of India (FCI) and Central Warehousing

Corporation (CWC). Although 30 % of Agri Warehousing is still operated by unorganized small warehouse owners. Cold stores accounts of almost 16 % of total warehousing industry and it expected to grow at 15% per annum on a sustained basis over the next 5 years with the organized market growth at a faster pace of 20%. Some significant players are Snowman, Gati Kausar, Cold Star, ColdEx, Kelvin Cold Chain etc. Last but not the least is Container handling & storage. ICD/ CFS accounts almost 14% of total warehousing market in India and in past 3 years it has grown 10-15 % with almost 90,000 crore rupees market value. Government initiatives, faster container rail transport & secure cargo movement is the main reason for sudden growth rate in containerized movement of Cargo. The government run CONCOR (Container Corporation of India Ltd) continues to be the largest player operating 48 terminals which handles EXIM Cargo while 14 others handle domestic traffic only. In today's scenario Warehousing is not only for storage and transport service it is fast emerging as strategic end to end solutions that improves efficiencies with organized & skilled professional services. The fast growth in retail, automotive, manufacturing, pharmacy and agriculture along with GST in India is expected to give a proper thrust in Warehousing & Logistic business.



DP World Reports 3.7% Gross Like- For-Like Volume Growth in 9m 2018

موانئ دبي العالمية
DP WORLD




DP World Limited handled 53.6 million TEU (twenty-foot equivalent units) across its global portfolio of container terminals in the first nine months of 2018, with gross container volumes growing by 2.6 % year-on-year on a reported basis and 3.7% on a like-for-like basis¹.

Gross like-for-like volumes declined by 0.5% in 3Q2018 due to the tougher year-on-year comparables (3Q2017 volumes grew 13.5% year-on-year), and softer volumes in the UAE.

The UAE handled 11.3

million TEU in 9M2018, down -2.1% year-on-year, with 3Q2018 volumes down -6.7% year-on-year due to the challenging macroenvironment and loss of lower-margin cargo. Growth in Europe remained robust with strong growth in London Gateway (UK) and Rotterdam (Netherlands).

At a consolidated² level, our terminals handled 27.7 million TEU during the first nine months of 2018, a 1.6% improvement in performance on a reported basis and up 2.2% year-on-year on a like-for-like³ basis.

Group Chairman and Chief Executive Officer Sultan Ahmed Bin Sulayem commented:

“As highlighted in our first half throughput announcement, we have seen our volume growth decelerate due to the strong prior year performance and general caution in the market given the current uncertainty in global trade. In the UAE, the volume weakness in 3Q2018 is mainly due to loss of low-margin throughput, where our focus remains on profitable cargo and, while the near-term volume outlook in Jebel

Ali remains challenging, we have taken measures to maintain profitability.

On our wider portfolio, we have made good progress in strengthening our product offering to play a greater role in the global supply chain as a trade enabler. We continue to focus on delivering operational excellence, managing costs and disciplined investment to remain the port operator of choice. We are also pleased to state that despite the softer volumes, we are on track to meet market expectations.”

Source : DP World Media Release

BUSINESSMEN AND INVESTORS

Rahat Talreja

Vice President - CSS Central India

Who came first? The chicken or the egg? The egg cannot "come" so it obviously was the chicken. The centuries old question has been solved.

Ok lets try another question. Who came first, the son or his father? Its son because only after he was born, did his father become a father.

If you notice, the world is no longer "confused." Its very clear on a lot of things. Well only in the talking aspect of things. We have learnt to have quick answers to so called tough questions due to the art of articulation and not necessarily having a proper answer.

Talking is free. So it really doesn't matter these days on what one says. But in this whirlpool culture, the ones who have been caught on the wrong side and are "paying" for it are the businessmen or entrepreneurs. Let me tell you how.

A humble Indian guy became a barber. He was good at his work and slowly gained prominence in his field and was going steady till "They" came to him one day. They now sold their "dream" template to him, as they do to several innocent businessmen. They are the powerful liquidity carriers and dream sellers called Investors. Suddenly he came up with several barber shops, added more through franchise model, added top line to his business, did a brand valuation and voila was ready for an IPO (initial public offering or share issue) of 600 million Indian rupees. His name is Javed Habib. God knows about the IPO but his



dreams still live on as long as some private investors keep coming in and out of his balance sheet.

A small retailer of flavoured milk in Delhi had these investor visitors one day. From selling nice fresh Delhi milk in several flavours, he has now become what we call "Keventers" today. Valued recently at 1100 Indian crores.

By the way if you sell a single finger on your hand for 1 million, both your hands are valued at 10 million and the entire body at 1000 million, this is how "Value" is decided these days.

So several businesses, which needn't have any scale in themselves, are scaled up through liquidity. Barber, milk seller are examples I have used above. But the real issue is that today, with this becoming common knowledge to all, most businessmen have started to dream this big valuation theory, forgetting that hot money that investors carry can pull down the business if we dont focus on what the business needs and do what the investors need. Let me give an example:

Indian Banks.

The banking story is such that investors earlier took

"Loan Growth" as a parameter to judge a banks performance and valuation. So banks stopped seeing what needs to be done with their own banking business and rather wanted lofty valuations for themselves and their owners for which they incessantly went on lending lending lending to match the criteria of the investors " Loan Growth Valuation Theory" Now, because they didn't do what the business needed, which is loan disbursement diligence, suddenly we have a banking crisis. Look here what happens, the same investors suddenly pull out the hot money from such banks and deploy it to banks where there is lesser loan growth but asset quality is good. Which means HDFC bank is the clear winner because it never went into the wholesale loan business inspite of the world doing it at the cost of its own growth. It did what the business needed and here you are today. India has a 12 lac crore banking NPA crisis. So see how investors changed their parameters overnight, This is the caution that businessmen need to take.

Work for the needs of the Business and not the Investors. They will follow you as long as your business is right. Never forget this mantra ever. You don't chase investors, let them chase you.

In our logistics field, the investors have made "top-line" as a parameter today. In E-commerce and logistics, they say, profit is not important, top-line is everything. And we are all swayed by the glamorous stories of loss



making dot coms who have sky high valuations. Logistics companies having 3-4 % PAT levels but market caps decided by top-lines. Top companies have even given internal long term messages on "top-line" sales like 2 billion (those who know will know which company i am referring to).

To aid this top-line growth, balance sheets are being loaded on the debt side. Equity is being diluted. Bad customers are bought into the system. Systemic risks are created due to easy terms to customers. The party is on and the valuations are on the books and exchanges. But I can assure you that every businessman true to his heart will never like it deep within him. He knows well that what he is doing is not good for the business, its only good for his valuation. The parameter given by the Investors. Let him not forget that hot money has no loyalty to anyone. Be loyal to your business and its goals and do what is needed to be done. Not what they want us to do. I am sure the day is not far when all eyes will open and the parameter changed to : Bottom -line" Till then, keep swimming.

REDEFINING INDIAN LAW ON ARREST OF NON-OWNED SHIPS: SUNIL B. NAIK V. GEOWAVE COMMANDER:- A REVIEW



Joy Thattil

Maritime Lawyer & Partner @ Callidus
Dubai, Singapore & India
joy@calliduscmc.com

The Supreme Court of India, on 9th March 2018, marked a milestone in the field of Admiralty law while deciding the case, **Sunil B. Naik v. Geowave Commander** by incorporating the principle that there cannot be an arrest or restraint of a vessel in possession of a non-owner, but owned by a complete third party, for a maritime claim against the former. The Admiralty law in India regarding this was silent. It was this huge uncertainty that was set aside by the apex court through the above decision.

The facts of the case are as follows—Oil and Natural Gas Corporation Ltd. awarded a contract to one Reflect Geophysical (a Singapore based company) to carry out seismic survey off the coast of Gujarat near Okha port in 2012. Reflect Geophysical then entered into a bareboat Charter Party Agreement dated 29.06.2012 to charter the vessel ‘Geowave Commander’ from Master and Commander AS, registered in Norway, for 3 three years.

Later, Reflect Geophysical contracted with one Yusuf Abdul Gani (on 01.10.2012) and one Sunil B Naik (on 30.10.2012), to give on hire the vessel ‘Orion Laxmi’ to work in support (like towage duty) and 24 fishing trawlers being the chase vessels to assist in survey operations to be conducted by chartered vessel Geowave Commander respectively. When payments due to Yusuf Gani and Sunil Naik were defaulted by Reflect Geophysical, they approached the Bombay High Court to enforce their claim against Reflect Geophysical by arresting the vessel Geowave Commander. Even though the court gave an ex parte decree to arrest the vessel, later it refused to order arrest, holding that Reflect Geophysical was not the owner of the vessel Geowave Commander, and hence the claims against Reflect Geophysical could not be enforced through the arrest of the chartered vessel.

On appeal by the two aggrieved parties, the Supreme Court bench consisting of Justice J. Chelameswar and Justice Sanjay

Kishan Kaul, considered three important principles while adjudicating the matter. One being the precedent set by the SC itself in the landmark decision of **MV Elisabeth & Ors. v. Harwan Investment & Trading Pvt. Ltd.** “*The foundation of an action in rem against a ship arises from a maritime lien or claim imposing a personal liability upon the owner of the vessel.*” Here the claim was only against the charterer of the vessel and not against the de jure owner of the vessel. Thus the chartered ship cannot be arrested for a claim against its charterer. The court observed that “the crucial **test** would be **of ownership**, which in the present case clearly does not vest with Reflect Geophysical and the de facto ownership under their bareboat charter cannot be equated to a de jure owner, which is necessary for an action in personam”.

The second point that crossed the Hon’ble Court was **Article 3(3) of the International Convention on Arrest of Ships, 1999**, which forbids the arrest of ships not owned by the person liable for the claim, except under a judgment based on a contrary law of the respective state. The Indian Admiralty law is silent on that matter, hence no judgment for arrest of such a ship could not take place. The SC itself has stated in the Elizabeth case (supra) that in the absence of any specific statutory provisions, maritime laws of the world can be adopted and adapted by Indian courts. Therefore, though India is not a signatory to the above convention the principles of the same can be utilized appropriately.

Finally, despite the fact that the court considered the plea of “**beneficial ownership**”, it didn’t really agree to it while adjudication. In *Medway Drydock & Engineering Co. Ltd. v. M.V. Andrea Ursula*, it was observed that “*a ship would be beneficially owned by the person who, whether or not he was the legal or equitable owner or not, lawfully had full possession and control of her, and, by*

virtue of such possession and control, had all the benefit and use of her which a legal or equitable owner would ordinarily have”. But the fact that the above judgment was dissented by the Queen’s Bench itself in **I Congreso Del Partido** was duly noticed by the court. From the latter case, the court concluded that “mere possession of the ship, however, complete and whatever be the extent of the control was not found good enough to confer the status of ownership. The “*beneficial use*” of a chartered ship would not ipso facto convert the status of a charterer into a “*beneficial owner.*”

Hence, the Apex Court of India laid down a strong precedent that there cannot be an arrest or detention of a vessel in possession of a non-owner, but owned by a complete third party, as a security for a maritime claim against the former. The fact that the most significant admiralty case of *Elisabeth v. Harwan Investment & Trading* was cited and International Convention on Arrest of Ships was referred, where India not being a signatory, are all fascinating points to be noted. It is also interesting to look into, how the plea of “beneficial ownership” wasn’t really given importance for adjudication.

A UNIQUE PRESENTATION

If you think that presentation is all about how others see you, then perhaps it's time you reassessed your opinion. You may well ask, "Why" because surely the importance of how others receive your presentation is paramount? Well this was undoubtedly the case before the advent of the internet. In simple terms, if you presented someone with a fancy and beautiful box of chocolates, they were more impressed than if you gave them exactly the same chocolates in a brown paper bag. Case proved – presentation matters!

So, what has the internet done to change this? Basically, it has stopped many of us thinking about the actual presentation and made us more focused on ourselves. Facebook, Twitter, Instagram, LinkedIn and Snapchat etc., constantly bombard everyone with information about others. In many cases this creates jealousy within us. Why can't we have the lifestyles of David Beckham, Deepika Padukone, Emma Watson or Shahid Kapoor etc.? Consequently, instead of naturally thinking about the effect our presentation has on the recipients, the focus has shifted. There is now a tendency to place more importance on our own importance. The internet has been educating us, through our on-going interactions with social media, that we are all equally unique and correspondingly important. Otherwise, how do you explain the need to gain more followers on Twitter or more likes on Facebook than anyone else?

It used to be accepted that people might normally have a unique talent in one particular skill. Consider the university professor who was brilliant at maths but known to be quirky and eccentric in most other things. However, many now believe that being unique, in one area, allows them to claim some right to have a valued opinion in others. This has led to celebrities, who are only known for their singing or acting abilities, telling us how we should vote politically or what toothpaste we should use!

It is true that the meanings of words change over time but let's look at 'unique'. Its original meaning was: - *'Being only one of a particular type or having no equal'*. Obviously such a definition completely excludes the possibility of there being more than one. Applying this logic how can we all be unique?

This idea of uniqueness and individuality, with its implied sense of self-importance, has worryingly started to result in the breakdown of team spirit. You only have to look at football and the way a main celebrity player attracts all the credit, as well as the money! Invariably their 'uniqueness' causes friction, within the team, who have to live under the celebrities shadow. In our workplaces, if we all believe we are unique then it restricts our ability to receive or give advice and perhaps come up with ideas, because others are afraid to compromise our uniqueness. This philosophy makes us more resistant to being told we might have got something wrong or that there is a better way of doing things.



The current global state of politics highlights this, especially in America and the United Kingdom. A topically trending 'meme,' (the name for an image, video or piece of text, typically humorous that is spread rapidly via social media) shows 'NPC' (non-player characters) protesting how they are all unique. The absurdity of computer-generated random characters having some sort of influential uniqueness is laughable. But consider this: 'Every snowflake is unique but it has totally no individual effect in a snowstorm'.

So where does this leave us? To adapt a famous quote: - *'No person is an island, entire of themselves, because everyone is a piece of the continent.'*

In order to better ourselves, and also help others, we mustn't allow the internet to suck us into being isolated from the needs of others. Not everyone is interested in knowing about our recent stay in hospital, even though we got hundreds of likes on Facebook. The recent pictures posted of a Seychelles holiday might have got hundreds of likes, however the chances are some were

really envious and, even though they posted 'like' actually disliked them! Consequently, it would have been better not to post them because doing so caused envy. As the well-known logic goes, this negativity might well come back and bite you when you least expect it.

Good interactive presentation still relies on the premise that the importance of the recipient comes first and foremost. We must shrug off our feeling of self-importance and uniqueness. Resetting the threshold, raising the bar when self-importance kicks in, will give us a better perspective about our family, friends and colleagues. Interestingly the Victorian-era theatrical English partnership of Gilbert and Sullivan summed up the dilemma very well, in these lyrics from their 1889 comic opera, 'The Gondoliers'. It's probably well worth keeping them at the forefront of our minds.

'When everyone is somebody, then no one's anybody'.

Kaleidoscope desk

INBOUND

DUBAI

VESSEL	ALEXANDRIA	BAHRAIN	BANGKOK	BARCELONA	BREMEN	BUSAN	CHENNAI	DELHI	GENOA	GUANGZHOU	HONGKONG	ISTANBUL	KEELUNG	KOPER	NEW YORK	NHAVA SHEVA	NINGBO	QINGDAO	ROTTERDAM	SHANGHAI	SINGAPORE	SOUTHAMPTON	XIAMEN	XINGANG	JEBEL ALI	
WADI ALRAVAN	3-Nov																								19-Nov	
WADI ALRAVAN	10-Nov																									26-Nov
WADI ALRAVAN	17-Nov																									3-Dec
WADI ALRAVAN	24-Nov																									10-Dec
WADI ALRAVAN	1-Dec																									17-Dec
WADI ALRAVAN	8-Dec																									24-Dec
WADI ALRAVAN	15-Dec																									31-Dec
OEL JUMEIRAH		6-Nov																								9-Nov
OEL JUMEIRAH		13-Nov																								16-Nov
OEL JUMEIRAH		20-Nov																								23-Nov
OEL JUMEIRAH		27-Nov																								30-Nov
OEL JUMEIRAH		4-Dec																								7-Dec
OEL JUMEIRAH		11-Dec																								14-Dec
OEL JUMEIRAH		18-Dec																								21-Dec
BASLE EXPRESS			6-Nov																							2-Dec
HYUNDAI VICTORY			14-Nov																							8-Dec
UNAVZAH			21-Nov																							16-Dec
JEBEL ALI			28-Nov																							23-Dec
HYUNDAI HONOUR			4-Dec																							29-Dec
UMM SALAL			12-Dec																							6-Jan
ALULA			19-Dec																							13-Jan
CMA CGM MUSCA				2-Nov																						25-Nov
CMA CGM SAN PEDRO				9-Nov																						30-Nov
CMA CGM TITAN				16-Nov																						7-Dec
OOCL FRANCE				23-Nov																						14-Dec
CMA CGM LEO				30-Nov																						21-Dec
APL GWANGYANG				7-Dec																						28-Dec
CMA CGM CASSIOPEIA				14-Dec																						4-Jan
DALI					2-Nov																					24-Nov
MAERSK SALICOR					9-Nov																					1-Dec
MAERSK STADELHORN					16-Nov																					8-Dec
MAERSK GIATEMALA					23-Nov																					15-Dec
MAERSK GIBRALTAR					30-Nov																					22-Dec
MAERSK GUAYAGUIL					7-Dec																					29-Dec
MAERSK GENOA					14-Dec																					5-Jan
CMA CGM COCHIN						6-Nov																				29-Nov
CMA CGM PEGASUS						13-Nov																				6-Dec
CMS CGM VELA						20-Nov																				13-Dec
CMA CGM LYRA						27-Nov																				20-Dec
TO BE ADVISED (APL)						4-Dec																				27-Dec
APL DUBLIN						11-Dec																				3-Jan
CMA CGM TUTICORIN						18-Dec																				10-Jan
ALS FIDES							3-Nov																			18-Nov
MOGRAL							10-Nov																			25-Nov
EVER DELIGHT							17-Nov																			2-Dec
VARADA							24-Nov																			9-Dec
ALS FIDES							1-Dec																			16-Dec
MOGRAL							8-Dec																			23-Dec
EVER DELIGHT							15-Dec																			30-Dec
EMIRATES SANA								1-Nov																		6-Nov
TESSA								13-Nov																		17-Nov
MIRAMARIN								20-Nov																		24-Nov
EMIRATES DANIA								27-Nov																		1-Dec
TO BE ADVISED (ESL)								4-Dec																		8-Dec
EMIRATES Wafa								11-Dec																		15-Dec
EMIRATES HANA								18-Dec																		22-Dec
MAERSK SERANGOON									1-Nov																	16-Nov
SEROJA ENAM									8-Nov																	23-Nov
MAERSK SENANG									15-Nov																	30-Nov
MAERSK SEMBAWANG									22-Nov																	7-Dec
SEROJA TIGA									29-Nov																	14-Dec
MAERSK SEBAROK									6-Dec																	21-Dec
MAERSK KARLSKRONA									13-Jan																	28-Dec
OOCL BRUSSELS										2-Nov																26-Nov
EVER LENIENT										9-Nov																3-Dec
OOCL EGYPT										16-Nov																10-Dec
OOCL JUPITER										23-Nov																17-Dec
EVER UTILE										30-Nov																24-Dec
OOCL BRUSSELS										7-Nov																31-Dec
EVER LENIENT										14-Nov																7-Jan
COSCO HAMBURG											6-Nov															21-Nov
WAN HAI 517											13-Nov															28-Nov
WAN HAI 511											20-Nov															5-Dec
WAN HAI 518											27-Nov															12-Dec
WAN HAI 512											4-Dec															19-Dec
KOTA CEMPAKA											11-Dec															26-Dec
WAN HAI 519											18-Dec															2-Jan
AMOUANI												8-Nov														27-Nov
COSCO SINGAPORE												15-Nov														4-Dec
UASC YAS												22-Nov														11-Dec
CMA CGM BERLIOZ												29-Nov														18-Dec
XIN NING BO												6-Dec														25-Dec
TUBUL												13-Dec														1-Jan

ABOVE MENTIONED ARE TENTATIVE VESSELS AND ARE SUBJECT TO CHANGE. WE OFFER USA IMPORTS FROM CHARLESTON, HOUSTON, LOS ANGELES & NORFOLK
WE ALSO OFFER IMPORTS FROM SHENZHEN, TIANJIN, KUWAIT & KARACHI

INBOUND

DUBAI

VESSEL	ALEXANDRIA	BAHRAIN	BANGKOK	BARCELONA	BREMEN	BUSAN	CHENNAI	DELHI	GENOA	GUANGZHOU	HONGKONG	ISTANBUL	KEELUNG	KOPER	NEW YORK	NHAVA SHEVA	NINGBO	QINGDAO	ROTTERDAM	SHANGHAI	SINGAPORE	SOUTHAMPTON	XIAMEN	XINGANG	JEBEL ALI	
AMQIANI												20-Dec													8-Jan	
HYUNDAI DRIVE													7-Nov													24-Nov
HYUNDAI PRIDE													14-Nov													1-Dec
HYUNDAI VICTORY													21-Nov													8-Dec
HYUNDAI DREAM													28-Nov													15-Dec
HYUNDAI HOPE													5-Dec													22-Dec
HYUNDAI HONOUR													12-Dec													29-Dec
HYUNDAI RESPECT													19-Dec													5-Jan
MAERSK EDIRNE														7-Nov												30-Nov
MAERSK ESSEX														14-Nov												7-Dec
MAERSK ENSHI														21-Nov												14-Dec
MSC VANDYA														28-Nov												21-Dec
MAERSK ELBA														5-Dec												28-Dec
MAERSK EMERALD														12-Dec												4-Jan
MAERSK CHICAGO															3-Nov											1-Dec
MAERSK PITTSBURGH															10-Nov											8-Dec
MAERSK ATLANTA															17-Nov											15-Dec
MAERSK DETROIT															24-Nov											22-Dec
MAERSK HARTFORD															1-Dec											29-Dec
MAERSK COLUMBUS															8-Dec											5-Jan
MAERSK DENVER															15-Dec											12-Jan
RHL CALLIDIAS																3-Nov										9-Nov
LOUSE																10-Nov										16-Nov
TO BE ADVISED (ESL)																17-Nov										23-Nov
VIL DARDANELLES																24-Nov										30-Nov
RHL CALLIDIAS																30-Nov										6-Nov
LOUSE																7-Dec										13-Dec
EMIRATES ASANIE																14-Dec										20-Dec
YM WEALTH																	3-Nov									21-Nov
YM PLUM																	10-Nov									28-Nov
TM PINE																	17-Nov									5-Dec
XIN BELING																	25-Nov									12-Dec
COSCO GUANGZHOU																	2-Dec									19-Dec
TINA I																	8-Dec									26-Dec
TO BE ADVISED (COSCO)																	15-Dec									2-Jan
CSCJ JURITER																		4-Nov								23-Nov
CSCJ SATURN																		11-Nov								30-Nov
TO BE ADVISED (OOCL)																		18-Nov								7-Dec
TO BE ADVISED (OOCL)																		25-Nov								14-Dec
OOCL EGYPT																		2-Dec								21-Dec
CSCJ NEPLINE																		9-Dec								28-Dec
COSCO ITALY																		16-Dec								4-Jan
BARZAN																			6-Nov							21-Nov
MOL TRIUMPH																			13-Nov							28-Nov
TIHAMA																			27-Nov							12-Dec
AL MURAYKH																			4-Dec							19-Dec
MOL TRIBUTE																				11-Dec						26-Dec
AL ZUBARA																				18-Dec						2-Jan
AL DAHNA																				25-Dec						9-Jan
COSCO HAMBURG																					1-Nov					21-Dec
WAN HAI 517																					8-Nov					28-Nov
WAN HAI 511																					15-Nov					5-Dec
TO BE ADVISED (ONE)																					22-Nov					12-Dec
WAN HAI 513																					29-Nov					19-Dec
WAN HAI 512																					6-Dec					26-Dec
COSCO HAMBURG																					13-Dec					2-Jan
ALUA																										18-Nov
TAYMA																					7-Nov					25-Nov
BASLE EXPRESS																					14-Nov					2-Dec
TO BE ADVISED (ONE)																					21-Nov					9-Dec
LUNAZAH																					28-Nov					16-Dec
JEBEL ALI																					5-Dec					16-Dec
TO BE ADVISED (ONE)																					12-Dec					23-Dec
BARZAN																					19-Dec					30-Dec
MOL TRIUMPH																						3-Nov				29-Nov
TIHAMA																					8-Nov					3-Dec
AL MURAYKH																					17-Nov					12-Dec
MOL TRIBUTE																					24-Nov					19-Dec
AL ZUBARA																					1-Dec					26-Dec
AL DAHNA																					8-Dec					2-Jan
EMIRATES DANA																						15-Dec				9-Jan
TO BE ADVISED (ESL)																										1-Dec
EMIRATES Wafa																										8-Dec
EMIRATES HANA																					20-Nov					15-Dec
EMIRATES SANA																					27-Nov					22-Dec
TO BE ADVISED (ESL)																					4-Dec					29-Dec
CMA CGM COCHIN																										5-Jan
CMA CGM PEGASUS																										1-Dec
CMA CGM VELA																										8-Dec
CMA CGM VELA																										10-Nov
CMA CGM LYRA																					17-Nov					15-Dec
TO BE ADVISED (OOCL)																					24-Nov					22-Dec
APL DUBLIN																										1-Dec
CMA CGM TUICORIN																										29-Dec
																										5-Jan
																										8-Dec
																										15-Dec
																										12-Jan

ABOVE MENTIONED ARE TENTATIVE VESSELS AND ARE SUBJECT TO CHANGE. WE OFFER USA IMPORTS FROM CHARLESTON, HOUSTON, LOS ANGELES & NORFOLK WE ALSO OFFER IMPORTS FROM SHENZHEN, TIANJIN, KUWAIT & KARACHI

OUTBOUND

DUBAI

VESSEL	JEBEL ALI	ABU DHABI	ALEXANDRIA	ACABA	BAHRAIN	BARCELONA	BEIRUT	CHENNAI	COCHIN	COLOMBO	DAMMAMI	DAR ESSALAMI	DELHI	FELIXSTOWE	HAMBURG	JEDDAH	KARACHI	KUWAIT	MOMBASA	NEWYORK	INHAVA SHEFA	PORT LOUIS	RIYADH	ROTTERDAM	SHARJAH	SINGAPORE	SCHAR	UMM QASR	
MS TIGER	2-Nov	3-Nov																											
DIYALA	9-Nov	10-Nov																											
MS TIGER	16-Nov	17-Nov																											
DIYALA	23-Nov	24-Nov																											
MS TIGER	30-Nov	1-Dec																											
DIYALA	7-Dec	8-Dec																											
MS TIGER	14-Dec	15-Dec																											
DIYALA	21-Dec	22-Dec																											
MAERSK KALMAR	5-Nov		21-Nov																										
MAERSK KYRENIA	12-Nov		28-Nov																										
MAERSK KIMI	19-Nov		5-Dec																										
MAERSK LIMA	26-Nov		12-Dec																										
MAERSK KAMPALA	3-Dec		19-Dec																										
MAERSK KIEL	10-Dec		26-Dec																										
MAERSK KITHIRA	17-Dec		2-Jan																										
NORTHERN DEPENDANT	8-Nov			26-Nov																									
MAERSK BROOKLYN	15-Nov			3-Dec																									
UNI FLORIDA	22-Nov			9-Dec																									
OSAKA TOWER	29-Nov			17-Dec																									
NORTHERN DEPENDANT	6-Dec			24-Dec																									
UNI FLORIDA	13-Dec			6-Jan																									
MAERSK BROOKLYN	20-Dec			6-Jan																									
OEL JUMEIRAH	3-Nov				5-Nov																								
OEL JUMEIRAH	10-Nov				12-Nov																								
OEL JUMEIRAH	17-Nov				19-Nov																								
OEL JUMEIRAH	24-Nov				26-Nov																								
OEL JUMEIRAH	1-Dec				3-Dec																								
OEL JUMEIRAH	8-Dec				10-Dec																								
OEL JUMEIRAH	15-Dec				17-Dec																								
SEROJA TIGA	3-Nov					24-Nov																							
MAERSK SEBAROK	10-Nov					1-Dec																							
MAERSK KARLSKRONA	17-Nov					8-Dec																							
MAERSK SERANGOON	24-Nov					15-Dec																							
SEROJA ENAM	1-Dec					22-Dec																							
MAERSK SENANG	8-Dec					29-Dec																							
MAERSK KALMAR	5-Nov						22-Nov																						
MAERSK KYRENIA	12-Nov						29-Nov																						
MAERSK KIMI	19-Nov						6-Dec																						
MAERSK LIMA	26-Nov						13-Dec																						
MAERSK KAMPALA	3-Dec						20-Dec																						
MAERSK KIEL	10-Dec						27-Dec																						
MAERSK KITHIRA	17-Dec						3-Jan																						
EVER DELIGHT	5-Nov							16-Nov																					
VARADA	12-Nov							23-Nov																					
ALS FIDES	19-Nov							30-Nov																					
MOGRAL	26-Nov							7-Dec																					
EVER DELIGHT	3-Dec							14-Dec																					
VARADA	10-Dec							21-Dec																					
ALS FIDES	17-Dec							28-Dec																					
EVER DELIGHT	5-Nov								11-Nov																				
VARADA	12-Nov								18-Nov																				
ALS FIDES	19-Nov								25-Nov																				
MOGRAL	26-Nov								2-Dec																				
EVER DELIGHT	3-Dec								9-Dec																				
VARADA	10-Dec								16-Dec																				
ALS FIDES	17-Dec								23-Dec																				
EVER DELIGHT	5-Nov									14-Nov																			
VARADA	12-Nov									21-Nov																			
ALS FIDES	19-Nov									28-Nov																			
MOGRAL	26-Nov									5-Dec																			
EVER DELIGHT	3-Dec									12-Dec																			
VARADA	10-Dec									19-Dec																			
ALS FIDES	17-Dec									26-Dec																			
BOMER HERMES	3-Nov										6-Nov																		
XIN SHANGHAI	8-Nov										11-Nov																		
CAPE MALE	10-Nov										13-Nov																		
XIN NING BO	14-Nov										17-Nov																		
BOMER HERMES	17-Nov										20-Nov																		
COSCO PACIFIC	22-Nov										25-Nov																		
CAPE MALE	24-Nov										27-Nov																		
XIN LOS ANGELES	29-Nov											2-Dec																	
BOMER HERMES	1-Dec											4-Dec																	
COSCO SINGAPORE	5-Dec											8-Dec																	
CAPE MAYOR	1-Nov												14-Nov																
SAFMARINE NGAMI	8-Nov												21-Nov																
SAFMARINE NYASSA	15-Nov												28-Nov																
NICOLE MAERSK	22-Nov												5-Dec																

ABOVE MENTIONED ARE TENTATIVE VESSELS AND ARE SUBJECT TO CHANGE. ALSO HAVE DIRECT SERVICES TO ISTANBUL

OUTBOUND

DUBAI

VESSEL	JEBEL ALI	ABU DHABI	ALEXANDRIA	AQABA	BAHRAIN	BARCELONA	BERUT	CHENNAI	COCHIN	COLOMBO	DAMMAM	DAR ES SALAM	DELHI	FELIXSTOWE	HAMBURG	JEDDAH	KARACHI	KUWAIT	MOMBASA	NEW YORK	NHAVA SHEVA	PORT LOUIS	RIYADH	ROTTERDAM	SHARJAH	SINGAPORE	SOHAR	UMM QASR
MAERSK JALAN	29-Nov											12-Dec																
CAPE MAYOR	6-Dec											19-Dec																
SAFMARINE NGAMI	13-Dec											26-Dec																
SAFMARINE NYASSA	20-Dec											2-Jan																
NORTHERN PRACTICE	1-Nov												14-Nov															
NORTHERN GENERAL	8-Nov												21-Nov															
NORTHERN PRACTICE	15-Nov												28-Nov															
NORTHERN GENERAL	22-Nov												5-Dec															
NORTHERN PRACTICE	29-Nov												12-Dec															
NORTHERN GENERAL	6-Dec												19-Dec															
NORTHERN PRACTICE	13-Dec												26-Dec															
MAERSK GUAYAGUIL	4-Nov													30-Nov														
MAERSK GENOA	11-Nov													7-Dec														
MAERSK SARAT	18-Nov													14-Dec														
DALI	25-Nov													21-Dec														
MAERSK SALTORO	2-Dec													28-Dec														
MAERSK STADELHORN	9-Dec													4-Jan														
MAERSK GUATEMALA	16-Dec													11-Jan														
MAERSK GUAYAGUIL	4-Nov														4-Dec													
MAERSK GENOA	11-Nov														11-Dec													
MAERSK SARAT	18-Nov														18-Dec													
DALI	25-Nov														25-Dec													
MAERSK SALTORO	2-Dec														1-Jan													
MAERSK STADELHORN	9-Dec														8-Jan													
MAERSK GUATEMALA	16-Dec														15-Jan													
UASC YAS	5-Nov															11-Nov												
CMA CGM BERLIOZ	12-Nov															18-Nov												
XIN NING BO	19-Nov															25-Nov												
TUBUL	26-Nov															2-Dec												
AMOLIANI	3-Dec															9-Dec												
COSCO SINGAPORE	10-Dec															16-Dec												
UASC YAS	17-Dec															23-Dec												
CAPE MALE	2-Nov															5-Nov												
BOMER HERMES	9-Nov															12-Nov												
CAPE MALE	16-Nov															19-Nov												
BOMER HERMES	23-Nov															26-Nov												
CAPE MALE	30-Nov															3-Dec												
BOMER HERMES	7-Dec															10-Dec												
CAPE	14-Dec															17-Dec												
BELGIAN EXPRESS	4-Nov																6-Nov											
ALS FIDES	5-Nov																7-Nov											
BELGIAN EXPRESS	11-Nov																13-Nov											
ALS FIDES	12-Nov																14-Nov											
BELGIAN EXPRESS	18-Nov																20-Nov											
ALS FIDES	19-Nov																21-Nov											
BELGIAN EXPRESS	25-Nov																27-Nov											
ALS FIDES	26-Nov																28-Nov											
BELGIAN EXPRESS	2-Dec																4-Dec											
ALS FIDES	3-Dec																5-Dec											
BELGIAN EXPRESS	9-Dec																11-Dec											
VIL DARDANELLES	2-Nov																9-Nov											
RHL CALLIDIAS	9-Nov																16-Nov											
NORO	16-Nov																23-Nov											
EMIRATES ASANTE	23-Nov																30-Nov											
VIL DARDANELLES	30-Nov																7-Dec											
RHL CALLIDIAS	7-Dec																14-Dec											
NORO	14-Dec																21-Dec											
CRETE 1	2-Nov																				16-Dec							
YM MODESTY	9-Nov																				23-Dec							
ALEXANDRIA	16-Nov																				30-Dec							
MOL PARTNER	23-Nov																				6-Jan							
DALIAN EXPRESS	30-Nov																				13-Jan							
PAXI	7-Dec																				20-Jan							
PRIORITY	14-Dec																				27-Jan							
NORTHERN GENERAL	7-Nov																					14-Nov						
NORTHERN PRACTICE	14-Nov																					21-Nov						
NORTHERN GENERAL	21-Nov																					28-Nov						
NORTHERN PRACTICE	28-Nov																					5-Dec						
NORTHERN GENERAL	5-Dec																					12-Dec						
NORTHERN PRACTICE	12-Dec																					19-Dec						
NORTHERN GENERAL	19-Dec																					26-Dec						
MSC EARTH	5-Nov																									25-Nov		
MSC NEW YORK	12-Nov																									2-Dec		
MSC EARTH	19-Nov																									9-Dec		
MSC NEW YORK	26-Nov																									16-Dec		
MSC EARTH	3-Dec																									23-Dec		
MSC NEW YORK	10-Dec																									30-Dec		

ABOVE MENTIONED ARE TENTATIVE VESSELS AND ARE SUBJECT TO CHANGE. ALSO HAVE DIRECT SERVICES TO ISTANBUL

continued...page 20

VESSEL	JEBELALI	ABU DHABI	ALEXANDRIA	AQABA	BAHRAIN	BARCELONA	BEIRUT	CHENNAI	COCHIN	COLOMBO	DAMMAM	DARES SALAMI	DELHI	FELIXSTOWE	HAMBURG	JEDDAH	KARACHI	KUWAIT	MOMBASA	NEW YORK	NHAVA SHEVA	PORT LOUIS	RYYADH	ROTTERDAM	SHARJAH	SINGAPORE	SOHAR	UMM QASR
MSC EARTH	17-Dec																					6-Jan						
OOCL EGYPT	2-Nov																							12-Nov				
CMA CGM BERLIOZ	7-Nov																							17-Nov				
CSC NEPTUNE	9-Nov																							19-Nov				
XIN NING BO	14-Nov																							24-Nov				
COSCO SPAIN	16-Nov																							26-Nov				
TUBUL	21-Nov																							1-Dec				
CSC JUPITER	23-Nov																							3-Dec				
AMOLIANI	28-Nov																							8-Dec				
CSC SATURN	30-Nov																							10-Dec				
COSCO SINGAPORE	5-Dec																							15-Dec				
TO BE ADVISED (OOCL)	7-Dec																							17-Dec				
EVER DELIGHT	4-Nov																								9-Dec			
VARADA	11-Nov																								16-Dec			
ALS FIDES	18-Nov																								23-Dec			
MOGRAL	25-Nov																								30-Dec			
EVER DELIGHT	2-Dec																								6-Jan			
VARADA	9-Dec																								13-Jan			
ALS FIDES	16-Dec																								20-Jan			
MS TIGER	2-Nov																									3-Nov		
DIYALA	9-Nov																								10-Nov			
MS TIGER	16-Nov																								17-Nov			
DIYALA	23-Nov																									24-Nov		
MS TIGER	30-Nov																								1-Dec			
DIYALA	7-Dec																								8-Dec			
MS TIGER	14-Dec																								15-Dec			
WANHA 517	1-Nov																									15-Nov		
HYUNDAI HOPE	6-Nov																								20-Nov			
WANHA 511	8-Nov																									22-Nov		
HYUNDAI HONOUR	13-Nov																									27-Nov		
WANHA 517	15-Nov																									29-Nov		
HYUNDAI RESPECT	20-Nov																									4-Dec		
WANHA 511	22-Nov																									6-Dec		
HYUNDAI DRIVE	27-Nov																									11-Dec		
WANHA 517	29-Nov																									13-Dec		
HYUNDAI PRIDE	4-Dec																									18-Dec		
WANHA 511	6-Dec																									20-Dec		
HYUNDAI VICTORY	11-Dec																									25-Dec		
NORTHERN PRACTICE	2-Nov																										4-Nov	
X-PRESS EUPHRATES	6-Nov																										11-Nov	
NORTHERN GENERAL	9-Nov																										11-Nov	
X-PRESS EUPHRATES	13-Nov																										18-Nov	
NORTHERN PRACTICE	16-Nov																										13-Nov	
X-PRESS EUPHRATES	20-Nov																										25-Nov	
NORTHERN GENERAL	23-Nov																										15-Nov	
X-PRESS EUPHRATES	27-Nov																										2-Dec	
NORTHERN PRACTICE	30-Nov																										17-Nov	
X-PRESS EUPHRATES	4-Dec																										9-Dec	
NORTHERN GENERAL	7-Dec																										19-Nov	
X-PRESS EUPHRATES	11-Dec																										16-Dec	
IRENS RELIANCE	6-Nov																											8-Nov
IRENS RELIANCE	13-Nov																											15-Nov
IRENS RELIANCE	20-Nov																											22-Nov
IRENS RELIANCE	27-Nov																											29-Nov
IRENS RELIANCE	4-Dec																											6-Dec
IRENS RELIANCE	11-Dec																											13-Dec
IRENS RELIANCE	18-Dec																											20-Dec



QUOTABLE QUOTES

Our goals can only be reached through a vehicle of a plan, in which we must fervently believe, and upon which we must vigorously act. There is no other route to success

- Pablo Picasso

Education is what remains after one has forgotten what one has learned in school.

- Albert Einstein

One whose knowledge is confined to books and whose wealth is in the possession of others, can use neither his knowledge nor wealth when the need for them arises.

- Chanakya

If there is any one secret of success, it lies in the ability to get the other person's point of view and see things from that person's angle as well as from your own.

- Henry Ford

CSS - EMPLOYEE OF THE MONTH

MADHUKAR SANDUPATLA –Homeward Bound, awarded by Gillian Alexander, Manager, CSS Homeward Bound

AUGUST 2018



ETIHAD AIRWAYS PLANNING TO USE MUNICIPAL WASTE AS JET FUEL



Etihad Airways and Abu Dhabi Waste Management Center (Tadweer) will collaborate on a landmark research project to explore how municipal waste can be converted into jet fuel. Representing a major development in the adoption of sustainable fuel, one of the aims of the project would be to use the final jet fuel on Etihad Airways' flights. Etihad and Tadweer signed a Memorandum of Understanding (MoU) at Etihad's headquarters. The MoU mandates the two entities to undertake an initial feasibility study towards developing a flagship waste-to-fuel facility in Abu Dhabi. Following the initial study, Etihad Airways and Tadweer will explore the possibility of developing a long-term project with additional partners. The project's progress and other carbon offset opportunities will be coordinated through a joint work committee comprising Etihad Airways and Tadweer personnel. In addition to the environmental benefits, the project also has economic advantages, as the cost of production could be as low as 50 percent of average international oil prices. Therefore, the adoption of waste-to-energy is one area in which the aviation industry can reduce its carbon footprint, which currently accounts for two per cent of global emissions

MASDAR CITY UNVEILS FIRST AUTONOMOUS TRANSPORT SYSTEM

Masdar City, Abu Dhabi's flagship sustainable urban development, has unveiled its first NAVYA autonomous vehicle. Capable of transporting up to 12 people, the Autonom Shuttle was inaugurated in the presence of dignitaries representing the Department of Transport, Abu Dhabi Police, and the French Embassy. Designed by the French autonomous vehicle pioneer NAVYA, the Autonom Shuttle is a self-driving electric vehicle dedicated to first and last-mile transportation. It has a top operational speed of 25 kilometres per hour. Implementation of Masdar City's wider transportation strategy will see the arrival of a fleet of seven Autonom Shuttles from next year.



Source : Online news portals

T S Kaladharan	Chairman
Anil Kumar	Director - Finance & Admin
Raj George	Senior V P - Projects, Oil & Energy
Ahmed Al Rais	Senior V P - Airfreight
Arjun Bose	Director - CSS Abu Dhabi, Qatar, Oman, Sharjah

Ajay Krishnan	COO - Freight forwarding
Chandrakala (CK)	COO - NVOCC
Dr. Britto Satheesh	Director - CSS Saudi Arabia
Sreenath V	V P - Operations & Projects
Siby C Kurian	V P - Sales & Marketing

INDIA

Rajesh Arora	Vice President - North India
Rahat Talreja	Vice President- Central India

**MIDDLE EAST**
www.cssgroupsite.com
Consolidated Shipping Service L.L.C.

PO.Box 61334, Jebel Ali (Opposite LOB-8)

Regional Head Quarters

Dubai, Tel : +971 4 8831303, Fax : +971 4 8831312

Email : info@cssdubai.com

CFS – Container Freight Station

Dubai, Tel : +971 4 8872333, Fax : +971 4 8872335

Email : cfsoperations@cssdubai.com

SCM – Supply Chain Management

Dubai, Tel : +971 4 8831303, Fax : +971 4 8831312

Email : info@fmclogistics.net

Dubai International Airport Cargo Gateway (Dubai Cargo Village)

PO. Box 27802, Dubai, UAE, Tel: +971 4 2826176, Fax: +971 4 2826179

Email: info@cssdubai.com

Consolidated Shipping Services L.L.C. Abu Dhabi

PO. Box 32454, Abu Dhabi, UAE, Tel: +971 2 6431717, Fax: +971 2 6431919

Email: info@cssabudhabi.com

Consolidated Shipping Services W.L.L. Bahrain

PO. Box 2209, Manama, Bahrain, Tel: +973 17540106, Fax: +973 17540107

Email: info@csibahrain.com

CSS Homeward Bound

PO. Box 27802, Warehouse No. 801-WH11, Al Quoz Industrial first, Dubai,

Tel: +971 4 3217388, Fax: +971 4 2223445

Email : info@csshomeward.com

Console Shipping Services W.L.L. Qatar

PO.BOX 55537, Al Matar Centre, Old Airport Road, Doha, Qatar

TEL : +974 4 4111318, FAX: +974 4 4111319

Email : info@cssqatar.com

Comprehensive Consolidated Trade and Shipping L.L.C. Oman

PO Box 815, 117, First Floor, Building A, Hatat Complex,

Wadi Adai, Muscat, Sultanate of Oman, Tel: +968 2 456 6 094, Fax : +968 2 4566093

Email: info@cssmuscat.com

CSS Kingston Logistics FZC Sharjah

PO.Box 513258, SAIF Zone, Sharjah, UAE, Tel: +971 6 5575111,

Fax: +971 6 5575222

Email : info@csskingston.com

Consolidated Shipping Services L.L.C. Saudi Arabia**Dammam Head Office**

1st Floor, Al Sunaid Bldg., King Khalid St., Thubaishi, P.O. Box 9580,

Dammam 31423

Kingdom of Saudi Arabia, Tel: +966-13-8333636, Fax: +966-13-8320533

Email : info@csssaudi.com

Riyadh Branch

2ND Floor, Al Selouly Bldg., Jareer St., Malaz, PO Box 14051, Riyadh 11422

Kingdom of Saudi Arabia, Tel: +966-11-2063111, Fax: +966-11-2921260

Email : info@csssaudi.com

Jeddah Branch

Suite 20, Hael Commercial Center, Hael St., PO Box 52143 Jeddah 21563

Kingdom of Saudi Arabia, Tel: +966-12-6427330, Fax: +966-12-6437220

Email : info@csssaudi.com

INDIA**Console Shipping Services India Pvt. Ltd. – Bangalore**

Suite 305, III Floor, Sophia's Choice, No.7, St. Mark's Road, Bangalore - 560001

Tel: +91 80 22133011, Fax: +91 80 421110133

Email: mailblr@cssindiagroup.com

Console Shipping Services India Pvt. Ltd. – Chennai

Door No. 151, New Corporation Door No. 132, First Floor

"Gee Gee Emerald" Commercial Complex, Valluvarkottam High Road

Nungambakkam, Chennai 600 034,

Tel : 044 28171511/ 28174512/ 28173481/ 28170515

Email: mailchennai@cssindiagroup.com

Console Shipping Services India Pvt. Ltd. – Cochin

Ground Floor, CCHAA Building, Indira Gandhi Road, W / Island, Cochin – 682009,

Telefax: +91 484 2667693 / 2667698

Email: mailcochin@cssindiagroup.com

Console Shipping Services India Pvt. Ltd. – Coimbatore

No.110, Rajpriya Avenue, #41-A&B, Avinashi Road,

Civil Aerodrome Post, Coimbatore- 641014 / INDIA, Tel : +91 422 4394142

Email: ctrj@cssindiagroup.com

Console Shipping Services India Pvt. Ltd. – Delhi

A 35, Upper Ground Floor, FIEE Complex, Ma Anandmayee Marg

Block A, Okhla Phase II, Okhla Industrial Area, New Delhi, Delhi 110020

Tel: +91 11 40589900, Fax: + 91 11 40589988

Email: maildelhi@cssindiagroup.com

Console Shipping Services India Pvt. Ltd. - Kolkata

Srishti, 3rd floor, flat 3B, 12, Ho-Chi-Minh Sarani, Kolkata - 700071

Mobile : +91 9830295152, Tel : 03346014171, Fax : 03346014171

Email: mailkolkata@cssindiagroup.com

Console Shipping Services India Pvt. Ltd. - Ludhiana

Room No. 102, venus House, Street no. 09, Jeevan Nagar

Focal Point, Ludhiana-141010

Mob: +91 8284052138, Tel: +91 1615080138

Email: meena@cssindiagroup.com

Console Shipping Services India Pvt. Ltd. – Mumbai

Suite # 102, First Floor, Sai Samarth Building, Deonar, Mumbai - 400088

Tel: +91 22 42212800, Fax: +91 22 42212899

Email: mailmumbai@cssindiagroup.com

Console Shipping Services India Pvt. Ltd. – Tirupur

NO:7/5,Ganga Nagar, 2nd Street, "MY CAPS" Building 3rd Floor

Behind Hotel Angel, Tirupur-641 602.

Tel: +91 421 2236025/2236302, Fax:+91 421 4332347

Email: mailtirupur@cssindiagroup.com

Console Shipping Services India Pvt. Ltd. – Tuticorin

No. 5A/179G, Caldwell Colony, 2nd Street [West], Tuticorin - 628008

Tel/ Fax : 0461 2377088, Mobile. +91 8220009788

Email: mailtuti@cssindiagroup.com

ASSOCIATES

Consolidated Shipping Services W.L.L. – Kuwait

Suhair Commercial Centre, Opp. Sharq Fire Station, 1st Floor
Al-Hilali Street, P.O. Box 12075, Shamiya 71651, Kuwait.
Tel +965 2249 3957, +965 22493960
Fax +965 2249 3956

Abdulrahman Amin
Dean Landers

Gr. General Manager
General Manager

abdulrahmanamin@csskuwait.com
dean@csskuwait.com

Hindustan Shipping & Clearing House

Ground Floor, CCHAA Building, Indira Gandhi Road, W/ Island,
Cochin - 682009 Telefax: + 91 484 - 2667693/ 98

Latha Ashokan

Branch Manager

latha@cssindiagroup.com

CSS Pakistan Private Limited

Corporate Head Office (Karachi)

Suite # 1201-1202, 12th Floor, Emerald Tower
Plot G-19, Block # 5, Main Clifton Road, Opposite 2 Talwar
Karachi-74000, Pakistan
Tel: +92-21-35157921-3, Mob: +92-345-2007530
Fax: +92-21-35157934, Email: info.khi@css-pk.com

Muhammad Asghar Malik

asghar@css-pk.com

Lahore Branch

Office # D-1001, 10th Floor, City Tower, 6-K Main
Boulevard Gulberg-II, Lahore - Pakistan
Tel: +92-42-35788788, Mob: +92 345-2007526
Fax: +92-42-35788979, Email: info.lhe@css-pk.com

Mudassar Bashir

mudassar.bashir@css-pk.com

Sialkot Branch

Suite B4, 1st Floor, Jawed Centre
Main Defense Road, Silakot, Pakistan
Tel: +92-52-3250744, Fax: +92-52-3258049
Email: info.skt@css-pk.com

Muhammad Nasir

m.nasir@css-pk.com

Islamabad Branch

Suite# 12, VIP Square, 1-8 Markaz, Islamabad, Pakistan
Tel: +92-51-4861147 - 8, Mob: +92-345 2009954
Fax: +92-51-4861149, Email: info.isb@css-pk.com

Arshad Mehood

a.mehmood@css-pk.com

Multan Branch

Suite # 1, 3rd Floor, Trust Plaza
LMQ Road, Multan, Pakistan
Tel: +92-61-34785027, Mobile No: +92-345-2007530
Fax: +92-61-34785028, Email: info.mux@css-pk.com

Muhammad Asghar Malik

asghar@css-pk.com

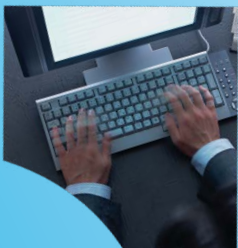
Faisalabad Branch

Suite P-47, Chenab Market, Madina Town
Faisalabad, Pakistan
Tel: +92-41-8549890, Fax: +92-41-8723381
Email: info.fsd@css-pk.com

Muhammad Naeem

m.naeem@css-pk.com

For a detailed contact list, please email marketing@cssdubai.com



YOUR TRUSTED SHIPPING & LOGISTICS COMPANION

Modules include

- ✓ Finance and Fixed Assets
- ✓ WHIMS (Warehouse Inventory Management)
- ✓ HRMS
- ✓ Payroll
- ✓ Freight Forwarding
- ✓ General Module
- ✓ WEWMS (Web enabled warehouse management system)

mail@fins.in

General features of the software include

- ✓ Facility to manage Multi company/ division or branch activities
- ✓ Portal enabled system
- ✓ Easy online help available with each module.
- ✓ Customisable theme settings
- ✓ Customizable reports
- ✓ Electronic authorization and document processing
- ✓ User/ Group level security features
- ✓ Transaction based audit trail
- ✓ Data transfer facility (EDI)
- ✓ Customizable parameters

www.fins.in

Moving never looked so easy



We can do

- ✓ Worldwide packing & moving of personal effects
- ✓ Local & International relocations
- ✓ Customs clearance & door to door service
- ✓ Transportation
- ✓ Pet relocation
- ✓ Fine art relocation
- ✓ Express baggage

You can avail

- ✓ 2 hours maid service
- ✓ 1 day free handy man
- ✓ Airport pick up and drop off

The above service will be available for 90 days from the move date

CSS

Homeward Bound

MOVING & RELOCATION • INDUSTRIAL PACKING & LASHING • STORAGE & SELF STORAGE

www.csshomewardbound.com | Toll Free **800 CSS (277)** | info@csshomeward.com