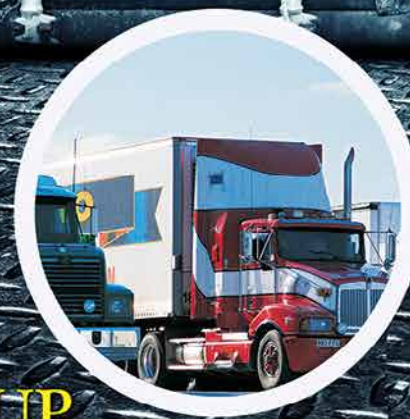




# Lighthouse

www.cssgroupsite.com JULY-AUGUST 2014

Bi-monthly publication of CSS Group



**CSLC 2  
CELEBRATES  
10 YEARS**



**CSS GROUP  
ENTERS ITS  
20TH YEAR**



**EXPO 2020  
DUBAI, UAE**



[www.facebook.com/  
cssgroupsite](http://www.facebook.com/cssgroupsite)



[twitter.com/  
CSSgroups](http://twitter.com/CSSgroups)

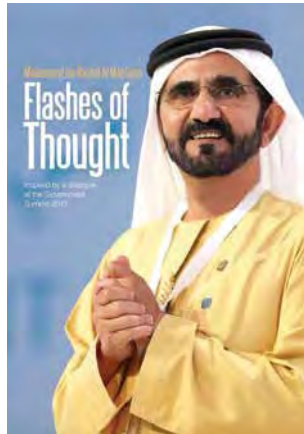
# Projects, Oil & Energy



**Consolidated Shipping Services L.L.C.**

P.O.Box 61334, Jebel Ali, Dubai, UAE  
Tel : +971-4-8872333, Fax: +971-4-8872335  
Email : [infoprojects@cssdubai.com](mailto:infoprojects@cssdubai.com)

[www.cssgroupsite.com](http://www.cssgroupsite.com)



and vision of a ruler who, in turn, brought happiness to his citizens.

In chapter 15 there is a mention about time management which reads:-

*"Some see the year as equivalent to 365 days. Well, I say that a year is equal to the number of days that you have invested in yourself, your family, your society or in your spiritual life."*

Only a visionary leader could think and postulate such a profound idea. I truly feel that all of us should take this idea into our hearts. By striving to interweave such thoughts in the right manner, into our minds and daily lives, we may all improve ourselves and our personality.



T S Kaladharan

"Flashes of Thought" is the title of book written by His Highness Mohammed Bin Rashid Al Maktoum, UAE Vice President, Prime Minister and Ruler of Dubai. A reader soon realises that this book gives you a rare insight into a ruler's vision about his country and the challenges he encounters in order to realise his dreams. History has taught us that a nation's development definitely lies within the vision of its rulers. Not only have my friends and myself witnessed the dramatic growth of Dubai but also its astounding development which has earned worldwide recognition over the past two decades. I consider myself fortunate that I have been witness to the amazing progress that Dubai has achieved. Being a part of this also affords me a little pride. "Flashes of thought" tell you about the determination

I am humbled to have a copy of this valuable book duly signed personally by His Highness Mohammed Bin Rashid Al Maktoum, UAE Vice President, Prime Minister and Ruler of Dubai. It has pride of place amongst my books as it provides a reminder of what should inspire us all. This is not only because CSS continues in our belief of adopting the best from around us, but because "Flashes of Thought" also sets by the example. We can learn that by staying focused on turning ambitions into reality it will help everyone at CSS. Consequently I have pleasure in recommending this book as a "must" read which will help guide us all in our endeavours to achieve greater accomplishments.

## CONTENTS



- 4 BREAKBULK EUROPE
- 5 CSS GROUP 20TH ANNIVERSARY  
A VISIT TO CAROTRANS
- 6 WCA RELOCATIONS CONFERENCE
- 7 NAFL GATHERING
- 8 DP WORLD NEWS
- 10 CSS @ ATM
- 11 CSS @ FPS
- 13 CSLC 2 CELEBRATES 10 YEARS
- 14 SPORTS @ CSS
- 15 CSR @ CSS
- 16 KALEIDOSCOPE



**Lighthouse**  
publication of CSS Group

FOR PRIVATE CIRCULATION ONLY



Lighthouse is produced by the CSS Group's Corporate Communications & Marketing Department

Layout & Design : Twin info solutions Pvt. Ltd.

For enquiries and suggestions:

[communications@cssgroupsite.com](mailto:communications@cssgroupsite.com)

Download Lighthouse online at [www.cssgroupsite.com](http://www.cssgroupsite.com)

# BREKBUK EUROPE 2014

FIRMLY ESTABLISHED AS WORLD'S LARGEST SPECIALISED LOGISTICS EVENT



Over 6300 project cargo and traditional breakbulk cargo logisticians and 275 exhibiting companies took part in the 9th annual Breakbulk Europe Exhibition from 12 to 15 May 2014 at the Antwerp Expo, Antwerp Belgium, making Breakbulk Europe 2014 the largest specialised logistics event worldwide. Breakbulk Europe 2014 attracted logisticians from 100 countries, creating a fertile environment for global cargo connections and business development. The theme for this year's event was "Moving the Gears of the World's Big Businesses."

Breakbulk Europe is one of ten annual specialized transportation events organized by Breakbulk Events & Media, a division of AXIO Data Group. Major exhibitions include Breakbulk China, Breakbulk Europe & Breakbulk Americas. Breakbulk Events also organizes targeted Congresses & Workshops in South Africa, Turkey, Brazil, Kenya, Tanzania, India & the USA.

CSS Group was well represented during the Breakbulk Exhibition, showcasing a strong presence led by a delegation from the United Arab Emirates, Bahrain, India and Pakistan. From CSS Dubai, T S Kaladharan, Chairman CSS Group, Raj George, Senior Vice President Projects, Oil & Energy, Ken Dinnadge,

VP Business Development, Siby Kurian, Sr. General Manager Sales & Marketing and Amith Horra, Marketing Manager were in attendance. From CSS Abu Dhabi, Renjith Pillai, Branch Manager, from CSS Bahrain Narayan Tagore, General Manager, from CSS India Prabhakar Maniyan, Vice President Projects and from CSS Pakistan Asghar Malik, Country Manager represented their respective regions during the exhibition.

"As always Breakbulk was an extremely interactive and an engaging exhibition, which is why it is rated as one the most vital exhibitions in the shipping and logistics calendar

of events. This year was no different with excellent networking events, an increase in participation from last year and more importantly more business opportunities were created with existing and new partners within the fraternity of shipping and logistics", added Raj George, Senior Vice President-Projects, Oil & Energy.



## BREKBUK IN A SNAPSHOT:

### Business Development Activities

At Breakbulk Europe, project cargo and traditional breakbulk cargo owners had the opportunity to learn about the latest industry trends and to meet and develop relationships with the leading specialised carriers, freight forwarders, ports/ terminals, packers and equipment companies that have the expertise to handle oversized cargoes requiring unique handling techniques. In addition to the packed exhibition hall, attendees joined networking activities including a Welcome

Reception in the hall, Ports Americas Happy Hour, Breakbulk Business Run and a multitude of networking dinners and receptions.

### Professional Formation Activities

Educational activities were held during 12 to 13 May and were commensurate with one's experience including the Heavy Lifting & Transport Master Class taught by Richard Krabbendam (Advanced/ Technical Level) and Managing Logistics for Capital Projects Workshop taught by Pam Holdrup (Entry/ Intermediate Level).



# CSS GROUP 20TH ANNIVERSARY

In today's economy, it is rare to find an organization that can proudly say that it has completed twenty years since its inception. Today CSS Group, thanks to the enormous support of all its agents, associates and partners can proudly announce that they have embarked on their 20th year of operation by June 2014. Having had a humble beginning in 1995, CSS Group has grown to become not just a regional, but a global player in the shipping fraternity. Today, CSS Group is sought out internationally by partners and customers alike for its outstanding reputation in customer service excellence, quality of execution and global experience. As part of its celebrations to mark this momentous



milestone, CSS Group will be inviting all its partners and associates to an exclusive gathering in March 2015 in Dubai, UAE. "With global partners, associates and well-wishers all

around the globe, we feel that it would be fitting to invite all those whose unending support have made this possible to celebrate with us right here in Dubai, where we began from our humble roots. It will be a celebration not only of our past but also of our future, one that we can build together through your continued trust and support in the organization," added T S Kaladharan, Chairman CSS Group.

The event will be taking place in one of the many world-renowned venues located here in Dubai. Details of the event will be circulated to all partners and clients globally.

For further information, please log onto: [www.cssgroupsite.com](http://www.cssgroupsite.com)

## A VISIT TO CAROTRANS

T S KALADHARAN, CSS GROUP CHAIRMAN VISITS CAROTRANS

Chairman of CSS Group, T S Kaladharan visited CaroTrans head office in New Jersey and offices in Chicago with Roshmon Manoli, Route Development Manager - North America, in May 2014, with a focus on building further growth plans for the year 2014/2015. During the course of their visit to CaroTrans offices, they conducted meetings with Greg Howard, Global CEO, Michael Forkenbrock, President, CaroTrans International and Riyaz Jordan, Branch Manager, while discussing new opportunities in the market and ways to further develop the business in 2014/2015. The meeting allowed both partners



to discuss growth areas within their markets that would serve as a channel for development within the routes that they operate in. "In our business it is vital to meet with partners face to face, as it allows us to better understand the economic scenario that they are working in, while understanding new growth opportunities that together as partners can be mutually beneficial," said T S Kaladharan.

With an increase in demand for

value-added global import transportation services, CaroTrans, a leading global NVOCC, ocean freight consolidator and longstanding alliance partner to the CSS Group, is strategically expanding its import service operations and coverage in key trade lanes. In the last twelve months, CaroTrans has expanded its global import service network in key global trade regions including Asia, North and South America, Middle East and Europe.

"It is always a pleasure to welcome the team at CSS Group to our offices here in New Jersey and Chicago. With the recent growth the Middle East is experiencing since after the recession, it is important that as partners we regroup and realign our plans for the future in order to fully capitalize on what is clearly a growing market. Partners like CSS Group are very important in our industry as their acute and in-depth knowledge of the industry within the region they operate in, is comparable to none. We look forward to working with the team very closely in 2014/2015, and look forward to an exciting year ahead," said Greg Howard.

# WCA RELOCATIONS CONFERENCE

CSS HOMEWARD BOUND ATTENDS 2ND ANNUAL CONFERENCE



business opportunities and building new relationships was phenomenal. The group is now stronger than ever and looking for only the most qualified removals experts," said Victor Gomez, General Manager, WCA Relocations.

The aim of the group is to provide a platform for household goods and personal effects movers to meet, build business and efficiently find partners globally. With expert partners around the world just a click away, members of the group can deal with peace of mind knowing that each member is qualified and is best in class in the service they provide

"The WCA Relocation conference is a true testament to the work done by the WCA in ensuring that only the best players from within the network of relocations are chosen to be a part of such a significant event within the industry," said Suku Sudhakaran, General Manager, CSS Homeward Bound who attended the conference. In addition the event was the ideal platform whereby like minded individuals were able to network and share valuable experiences from within the industry.



CSS Homeward Bound recently attended the 2nd Annual WCA Relocation conference held on May 14th in Hong Kong. The WCA Relocations is the newest and fastest growing specialty network created in mid-2012 and has already grown to over 75

member offices in 50 countries and 62 cities worldwide.

"With many old faces returning for the second year conference and many new ones joining to meet one another, the discussions about new

For more information please visit [www.csshomewardbound.com](http://www.csshomewardbound.com) & [www.wcarelocations.com](http://www.wcarelocations.com)



RELOCATION • EXHIBITIONS • INDUSTRIAL PACKING • LASHING • CRATING

Services Offered: Worldwide packing and moving of personal effects ● Local and International removals (Homes and Offices) ● Customs clearance and door to door service ● Warehousing ● Transportation ● Industrial packing and lashing ● Exhibitions & Events ● Comprehensive insurance

Dubai Creek Customs - Customs Wharfage  
Warehouse B, P.O. Box: 27802, Dubai, UAE  
Tel: +971 4 2227780, Fax: +971 4 2223445  
Email: [info@csshomeward.com](mailto:info@csshomeward.com), Visit: [www.csshomewardbound.com](http://www.csshomewardbound.com)




A member of the Canadian Association of Movers (CAM)  
A member of International Association of Movers (IAM)  
A member of Asian Relocation Association (ARA)  
A member of World Cargo Alliance Relocations (WCA)

# NAFL GATHERING

CSS ATTENDS NAFL GATHERING OF ARAB UNION OF LAND TRANSPORT



The National Association of Freight and Logistics (NAFL) on Sunday April 20th, 2014 hosted the Arab Union of Land Transport (AULT) annual meeting and was inaugurated under the patronage of Sheikh Ahmed Bin Saeed Al Maktoum, Honorary Patron, at the World Trade Centre in Dubai, UAE. The event focused on enhancing the industry and to improve operational efficiency in the freight and logistics industry in the region, with one eye on elevating the standards of the industry in line with the UAE's objectives of excellence.

Presentations on the industry were conducted by important senior officials and dignitaries. "NAFL is pleased to have hosted the annual meetings and

its opening ceremony, and sees it as a chance to push the bar further up this year. This was an important event for our industry and we are proud to have had it in Dubai. The UAE has a modern and advanced infrastructure, which is vital for every growing economy," said David Phillips, President NAFL at the conference.

CSS Group was represented by Ken Dinnadge, VP Business Development and Amith Horra, Marketing Manager, at the event. The event saw an attendance of over 700 participants from around 15 Arab nations and the UAE. The spokespeople at the event were Mohammed Ibrahim Al Tuwaijri Arab League's Assistant Secretary for

Economic Affairs, Abdulla Bin Damithan Director Commercial DP World, UAE Region, Saeed Al Tayer, Director of Jebel Ali Custom Centers, Atiq Juma Nasib Head of Dubai Chamber's Commercial Services Sector; Eng. Mahmood Al Bastaki, CEO Dubai Trade and Fahd Al-Rasheed the CEO and Managing Director of King Abdulla Economic City who spoke about the Kingdom's new project relevant to the industry.

"CSS is a NAFL member which is a non-profit organization with 310 members, including top multinational companies as well as large, medium and small national enterprises. NAFL is the official UAE representative of FIATA, which is the global body that represents the freight forwarding industry and works closely with UAE government bodies to help enhance the freight and logistics industry. Attending this event was extremely important for CSS as it was an opportunity to interact with senior transport officials from member Arab states," added Ken Dinnadge, VP Business Development, CSS.

The main event supporters and host of NAFL were leading members of the shipping and logistics fraternity as well as key government institutions such as Dubai Chamber, DP World, Dubai Customs, and Etihad Rail.

## CSS ABU DHABI ATTENDS ETIHAD CUSTOMER APPRECIATION EVENT

CSS Abu Dhabi recently attended the Etihad Airways Cargo Customer Appreciation dinner which took place at the Sheraton, Abu Dhabi Arzanah Ballroom. The management team of Etihad Cargo took the opportunity to express their gratitude and cooperation to CSS Abu Dhabi for their continued business and support throughout the year 2013.

It was an excellent platform for CSS Abu Dhabi and its team to network with the Air Cargo fraternity in Abu Dhabi, UAE whilst creating new business opportunities and fostering current ones within the air freight spectrum.



For further information, please log onto [www.cssabudhabi.com](http://www.cssabudhabi.com)

# HIS HIGHNESS VISITS CONTAINER TERMINAL 3



موانئ دبي العالمية  
DP WORLD

Courtesy : DP WORLD



2014 opened with grandeur with the inauguration of Container Terminal 3, the World's Largest Semi-Automated facility, by His Highness Sheikh Mohammed Bin Rashid Al Maktoum, Vice President and Prime Minister of the UAE and Ruler of Dubai.

His Highness, accompanied by Sheikh Hamdan bin Mohammed bin Rashid Al Maktoum, Crown Prince of Dubai, and Sheikh Maktoum bin Mohammed bin Rashid Al Maktoum, Deputy Ruler of Dubai, were welcomed to Terminal 3 by HE Sultan Ahmed Bin Sulayem, Chairman, DP World, Mohammed Sharaf, Group CEO, DP World, Mohammed Al Muallem, Senior Vice President and Managing Director, DP World, UAE Region and other senior officials.

During the visit, His Highness Sheikh Mohammed viewed the construction of the pioneering Terminal 3, which will add 4 million TEU (twenty foot equivalent container units) capacity to Jebel Ali Port this year, taking total



handling capacity to 19 million TEU.

Jebel Ali Port is the pride of the UAE, leading the industry by implementation of large scale automation. This includes 19 sophisticated automated quay cranes and 50 automated rail mounted gantry (RMG) yard cranes, all operated from a purpose-built operations building using remote control technology. This is also in line with His Highness's vision of transforming Dubai with smart systems

using technology.

Automation and new technology are our way of the future and will help our customers and the wider supply chain realise efficiencies on land that the new mega-ships generate at sea. Next generation vessels are a large support system to excellent customer service and will help us offer efficiencies as the country gears up to handle the cargo required for Expo 2020 preparation.





As a result of smart system technologies, quayside jobs such as remote quay crane operations will be located inside the new Terminal 3 Operations building. This has proven to be attractive to Emirati nationals, including women, who, we are delighted to note, make up a significant

number of our new T3 team.

During his visit, His Highness Sheikh Mohammed talked with some of the new female recruits about their new roles and one of the women crane operators gave His Highness a live demonstration

of a remotely controlled quay crane.

Planning for the long term and focussing on the next generation of Emiratis, is something DP World have always done and will continue to for the benefit of future generations. Indeed, 30% of the new quay crane operators recruited are Emiratis. The figure is even higher for RMG operators, with 70% of those recruited being Emiratis.

With the opening of Terminal 3, Jebel Ali Port will be able to handle ten of the largest vessels afloat simultaneously – the only port in the region able to do so. With the forthcoming connection of Etihad Rail to Jebel Ali Port, the port will be part of a multi-modal supply chain that seamlessly links sea-road-rail and air through the Dubai Logistics Corridor, reinforcing our position as the premier gateway for the region and the entire Middle East.

## CULTURAL CORNER

# ABRAS - THE TRADITIONAL MODE OF TRANSPORT

Forget the luxury yachts heading to Dubai Marina, there are other traditional ways of seeing Dubai and hopping on an Abra is one of the most enjoyable.

Taking an Abra is the most cost effective and enjoyable way to cross the beautiful Dubai Creek. The Abra has been an integral part of Dubai's history. It is a small motorized traditional commuter boat made of wood intended to travel across Dubai Creek, which in years gone by was one of the main modes of transport in Dubai.

It is still a vital mode of transport used by over 1 million people every month including local residents, business people and commuters trying to beat the traffic.

The Abra is now a well-respected tourist icon in addition to being a vital mode of transport. It's not uncommon for tourists to privately hire an Abra to further enjoy the stunning Dubai Creek scenery.

An Abra ride commences when the boat is full, normally about 20 passengers, the driver sits in the centre of the boat, whilst



the passengers sit facing out, circling the driver. The fare for an abra ride is about 1 Dirham per person and is paid to the driver. The journey to cross the creek will only take around 10 minutes and is used by about 42,000 people daily.

If you are the type of person who likes to immerse themselves in tradition then an Abra ride is a must. It will expose you to the lesser known side of hustling and bustling Dubai. As you step on board there is a genuine feeling of history.

# CSS ATTENDS ARABIAN TRAVEL MARKET



Arabian Travel Market (ATM) 2014, the region's leading travel industry showcase, celebrated its 21st edition which took place at the Dubai International Convention & Exhibition Centre from May 5 to 8, 2014. The exhibition welcomed over 4000 exhibitors from 95 countries with exhibition floor space covering more than 25,000 square meters.

Held under the patronage of His Highness Sheikh Mohammed Bin Rashid Al Maktoum, Vice President and Prime Minister of the UAE and Ruler of Dubai, the show has grown to become the largest showcase of its kind in the region and one of the biggest in the world.

One of the main highlights of the exhibition was the Middle East's cruise sector which



was highly visible and well represented at this year's Arabian Travel Market. Having been in decline since the global downturn and the subsequent effects of the Arab Spring the cruise sector has seen a recent bounce back with significant infrastructure investment, easing visa regulations and creative marketing. One challenge that the region faced was the lack of ports of call and the location of cruise facilities - most of the

berths for cruise vessels were located within commercial shipping ports, which was not particularly conducive for leisure visitors. In response, Mina Zayed Port in Abu Dhabi is currently undergoing major redevelopment creating a dedicated cruise terminal. Dubai has been upgrading Port Rashid to accommodate seven vessels simultaneously, up from the current five, as part of its strategy to attract 450,000 cruise tourists by 2016.



ATM 2014 encompasses more than 40 wide-ranging seminar and tech theatre sessions which besides cruise tourism cover aviation, mobile trends and the rising demand for wellness tourism.



a trusted companion for  
shipping and logistics



[www.fins.in](http://www.fins.in)

**General features of the software include**

- Facility to manage Multi company/ division or branch activities
- Portal enabled system
- Easy online help available with each module.
- Customisable theme settings
- Customizable reports
- Electronic authorization and document processing
- User/ Group level security features
- Transaction based audit trail
- Data transfer facility (EDI)
- Customizable parameters

**Modules include**

- Finance and Fixed Assets
- WHIMS (Warehouse Inventory Management)
- HRMS
- Payroll
- Freight Forwarding
- General Module
- WEWMS (Web enabled warehouse management system)

# CSS PARTICIPATES IN FPS SALES CONFERENCE 2014



CSS Group participated in the FPS sales conference 2014 which took place in Ho Chi Minh City, Vietnam from May 20 to 22, 2014. CSS Middle East was represented by Fida Asghar, Team Manager, NVOCC CSS Dubai and Dean Landers, General Manager, CSS Kuwait. The three day conference consisted of presentations, networking session, one to one meetings, sales training seminars, personal selling skills case studies, team



building activities, gala dinners and social sightseeing excursions. "The one on

one member meetings were extremely important as they were designed to build on the

reciprocal sales activity and business opportunities between members," added Fida Asghar. The three day event was hosted by Johnny Khoa, FPS member for Vietnam who added, "The conference provided valuable workshops on Personal Sales Technique and Advanced Selling Skills. It was a good opportunity to involve everybody in relaxed outdoor activities, entertainment, and to share an enjoyable stay here in Ho Chi Minh City."

## EMPLOYEE OF THE MONTH



Rakesh Ramachandran-Operations (CSLC 1) given by Sreenath V, Sr. General Manager, Projects, Oil & Energy/Ops.

May 2014

## Quotable quotes

Success is getting what you want. Happiness is wanting what you get - *Dale Carnegie*

Keep your face to the sunshine and you cannot see the shadow - *Helen Keller*

Happiness is nothing more than good health and a bad memory - *Albert Schweitzer*

Age is an issue of mind over matter; if you don't mind, it doesn't matter - *Mark Twain*

Try not to become a man of success but rather try to become a man of value - *Albert Einstein*



CSS Group

*CSS Group wishes you and your family a blessed Ramadan.*



*Ramadan  
Kareem*





# CELEBRATING 10 YEARS IN STYLE- CSLC 2

The Supply Chain Management facility CSLC- 2, of CSS Group began its operations in June 2004, with limited customers and today, has grown to become the preferred partner for major multinationals within the region. Located in JAFZA, one of the largest man made ports in the world, the facility is located close to the main container terminal which is naturally convenient for all parties involved. The current infrastructure of the facility is spread over 25,000 sq.mtrs with 14,000 sq.mtrs of state of the art racked warehousing that has a cargo capacity of 1050 TEUs. In addition, CSS Group is looking to expand this space by an additional 3000 sq.mtrs by the end of this year. The office space is around 300 sq.mtrs with an additional dedicated area of 500 sq.mtrs for value added jobs.

Supply chain management (SCM) is a necessity in today's business. It is a dynamic issue. It is the focus of key issues such as the global market place for sourcing and sales and with outsourcing. Consolidated Shipping Group, being a front runner in the field of freight forwarding in the Middle East

and Indian Sub continent, their customer base and the requirements have to be successfully harmonized with the state-of -the art infrastructure and service qualities. CSLC-2 is a towering example of CSS Group's commitment towards its clients. The Group understands the importance of its warehousing capacity and therefore has ensured that its infrastructure includes 22 Loading / unloading bays with dock levelers, multi tier heavy duty racking system, latest handling equipments- reach truck and battery operated forklifts, large staging area and space for value added activities and special cargo handling. In addition, the entire warehouse comes under special security surveillance. For the hi-tech industry, dedicated storage area and special handling equipments are also available. The SCM facility has full-fledged Warehouse Management System, Real Time Transactions, Optimized

Stacking & Cargo Removal, automated cargo identification using barcodes, infrared & radio frequency devices. Hareesh M Haridas, Manager, CSLC- 2 states, "Since our inception, innovation has always been the cornerstone of our success. Today, our facility boasts some of the most up to date equipments available in the industry that enables our clients to be assured that their cargo is in safe hands. With the recent EXPO 2020 win, we are looking at further expanding our infrastructure in order to keep up with an industry that will play a vital role for all nations participating at the EXPO."

CSS Group has always been a leader in innovation and technology. The success of the CSLC-2 is evidence of the vision of the CSS Group management who has always ensured out-of-the-box solutions, customer driven service and up to date technology which is part of their core offering.

Contact Details:

## Consolidated Shipping Logistics Centre -2 -SCM

PO Box 18595, Jebel Ali, Dubai, UAE

Tel: +971 4 8873999 Fax: +971 4 8818696

Email: [info@fmclogistics.net](mailto:info@fmclogistics.net)

[www.cssgroupsite.com/our-services/3pl-4pl/](http://www.cssgroupsite.com/our-services/3pl-4pl/)

# CSS SPONSORS INDIA CLUB UAE OPEN BADMINTON TOURNAMENT

The 37th edition of the India Club UAE Open Badminton tournament got off to a colourful start with a record 595 participants in the men's, ladies', boys', girls' and veterans' categories.

The competition is spread across 26 categories and the event has broken last year's record of 560 entries in the same number of categories.

The tournament, which has been held every year since 1978, was inaugurated by Anurag Bhusan, Consul General of India to Dubai, Dr Ram Buxani, Chairman of the India Club, trustee board member Sunil Singh and Dr Nilanjan Chattopadhyay, Chairman of the School of Business at Manipal University in Dubai. CSS Group is the co-sponsor for this tournament and is pleased to be associated with India Club over the years for its sporting events.

"The India club badminton tournament is one that is rooted in the tradition of the club, and has become a vital part of the community as a whole. CSS Group is proud to be associated with India Club, which has given so much to the Asian community here in the UAE, since its inception. On behalf of the CSS Group we would like to wish all the players in the tournament the best of luck," added Amith Horra, Marketing Manager, CSS Group. All matches are being played in the 21-points format in line with the rules and regulations of the Badminton World Federation (BWF).



Each player is restricted to participating in only three events in a bid to create opportunities for more players to make excel. Matches are also being conducted in a separate pool for special needs students from SNF Development

Centre and Dubai Autism Centre. There is also a separate pool for blue collar workers. The finals are scheduled for June 20, with cash prizes, trophies and gift hampers worth a total of more than Dh50,000 up for grabs.

## LUCKY WINNER

As part of our continuous commitment to the freight forwarding fraternity, CSS initiated a thank you scheme over 8 years ago, whereby one lucky name out of the scores of business cards that are dropped into the raffle bowls placed at the Delivery Order Counter will be rewarded with a gift.

The winner picked selected and rewarded for the months of July-August 2014 was **Meeran from Toll Global Forwarding** who walked away with gift vouchers worth AED 200 from Carrefour, presented by **Shelly Varkey, Manager- Admin., CSS Dubai.**



# TWINKLE TWINKLE LITTLE STARS



As part of a CSS - CSR initiative, new bags and umbrellas were distributed amongst pre-primary and primary school children at Thrikkunnappuzha, Alleppey Dist. Kerala. Three schools which are running under the Government of Kerala aid were benefitted by this regular CSR programme of school aid distribution by CSS under the

guidance of T S Kaladharan, Group Chairman. The schools were Govt. LP School Valiyaparambu, Govt. LP School Thrikkunnappuzha & Govt. LP School Panoor.

New bags and umbrellas brought beaming smiles on more than 600 little faces. The programme commenced with local authority members from the Panchayat wards welcoming the gathering. All the children, their parents

and the school authorities were present for the occasion. On another occasion the school park and play area which was also donated by T S Kaladharan to Govt. LP school Thrikkunnappuzha was inaugurated the previous day by the Hon. Home minister of Kerala, Ramesh Chennithala. People's representatives and the school authorities thanked CSS and Kala for this noble activity. G Unnikrishnan, Head-Corporate communications, CSS Group and Hareendran, Manager, Devas Farm house were present on behalf of CSS for the programme.

## GOVT. LP SCHOOL THRIKKUNNAPPUZHA



## GOVT. LP SCHOOL VALIYAPARAMBU



## GOVT. LP SCHOOL PANOOR



# WHO CONTROLS YOUR CREDIT CARD?

Have you heard the saying that the three dimensions of a credit card are length, width and DEBT? Whilst many a true word is said in jest, credit cards and debt are certainly no joke. Because many credit card users get into debt without realising, unless the dangers signs are spotted early, it may happen easily. We all start out believing that we can manage our finances, but many of us are driven by a need to “keep up with our neighbours”. Last year’s mobile is now redundant as the “must have” latest model hits the shops. This pressure usually hits the younger generations the hardest. They do not have the experience to appreciate that, it is essential to think ahead.

Our debts start when an unbeatable bargain is spotted, and we know money won’t be a problem because payday is soon. But what happens next is a real necessity arises. The car breaks down and it’s needed for work so an immediate bill is incurred. Perhaps a family medical or home emergency must be paid for. So onto the credit card it goes and debts start to mount-up. Then there is a sudden drop in income, redundancy or overtime is stopped. Before we know it credit card debt has unexpectedly risen. Not being able to pay it all off means that the monthly rate of interest becomes an annual nightmare. The debt cycle has begun!

Worldwide, where credit cards have become a way of life, many of citizens are already saddled with debilitating levels of debt. Younger generations are under greater risk as banks and credit card companies focus on them as ready targets. They know the earlier a person opens a bank account, or takes a credit card, then the chances are they will stay with the same bank/card for years to come. Getting into debt is easy. Realising we have a problem and facing it is more difficult. It takes a conscious and determined effort to take back control of our own finances. When the question is; “Who controls your credit card?” - The



answer must be; “You!”

Firstly, once it is accepted that there is a problem, we need to itemise outgoings essential for our survival. Food and a roof over our head come first.

I have a friend who lived in a make-shift caravan in his garden. He rented his home out so that the income would help pay off his debts. During this time he lived sparsely with his wife and son in the caravan. After three years, debts paid off, he saw his new business take-off and today he is a millionaire. Secondly, it takes determination to decide what we really need and put aside luxuries. A plasma HD cable TV, iPhone, tumble dryer and double fridge freezer aren’t essentials neither, for that matter, is a car! It is also not essential to socialise, drinking the most expensive drinks in the costliest venue. Being seen with the “in-crowd” doesn’t justify expenditure. When I look back as to how I lived with my parents and compare it with today, I sometimes wonder how I survived without these “essential” items. But I did and I have many happy memories of an enjoyable and exciting family upbringing. Having identified a debt problem and your essential needs then it is time for the third course of action:- Talking with your creditors. Most reputable lenders are willing to discuss arrangements so as to avoid the hassle of chasing you. However this is a dangerous time for those in debt. Under no circumstances

succumb to the temptation of borrowing money from an unregulated outlet.

The chances are they will not follow acceptable rules and you will end-up with more problems. In many countries, government and charities have debt counselling services. If these are available it is usually worth seeking their advice. With ever increasing debt problems some companies now provide confidential advice for their employees. Worrying about debt detracts from being able to focus fully on a job. I have always lived by the maxim never to lend or borrow when it involves a friendship, as it is the easiest way to lose a friend. This is why I recommend visiting support agencies that specialise in debt advice. Do not be afraid to ask for help as it is invariably the first step to solving your problems. Going into debt is an easily opened door as credit cards are now seen as a customised fashion item. Recipients are able to upload their own designs. These include pictures of celebrities, optical illusions and the ubiquitous “selfie”. Whilst I have never seen one for real, I came across an Internet report of the Dubai First Royale credit card which apparently comes embedded with a real diamond. Now one of these I MUST have!

But when it comes to taking control of a credit card one lady was heard saying; “I think my credit card is dangerous because, every time I take it out, my husband chases me with the scissors” ... !

*Kaleidoscope desk*



# CONSOLE SHIPPING SERVICES INDIA PVT. LTD.

|   |   |                                   |
|---|---|-----------------------------------|
| Jairam K R  | Director                                  | jairam@cssindiagroup.com          |
| Anil Balakrishnan                                 | V P – Business Development<br>South India | abnair@cssdubai.com               |
| <b>DELHI</b>                                      |   |                                   |
| Rajesh Arora                                      | V P - North India                         | rajesharora@cssindiagroup.com     |
| <b>Exports-Sales &amp; Marketing</b>              |   |                                   |
| Prasun Roy  | Sr Manager Export                         | prasun@cssindiagroup.com          |
| Manish Kumar                                      | Manager sales                             | manishkumar@cssindiagroup.com     |
| Deepak Bahuguna                                   | Dy Manager sales                          | deepak@cssindiagroup.com          |
| Sunit Sharma                                      | Dy. Manager - sales                       | sunit@cssindiagroup.com           |
| Nikhil Narang                                     | Asst. Manager - Sales                     | nikhil@cssindiagroup.com          |
| Bairender   | Executive                                 | bairender@cssindiagroup.com       |
| <b>Imports-Sales &amp; Marketing</b>              |   |                                   |
| Rajeev Kumar                                      | Manager Import                            | rajeevkumar@cssindiagroup.com     |
| Prabhakar Kumar                                   | Dy. Manager - sales                       | prabhakar@cssindiagroup.com       |
| <b>Export Documentation, CRM &amp; Operation</b>  |   |                                   |
| Gauri Pradhan (Mr)                                | Executive - docs                          | exportdox@cssindiagroup.com       |
| Sangeeta Negi                                     | Jr Ex CRM                                 | sangeetanegi@cssindiagroup.com    |
| Deepali Arora                                     | Jr Ex CRM                                 | salessupportdel@cssindiagroup.com |
| <b>Imports Documentation, CRM &amp; Operation</b> |   |                                   |
| Kishan Dutt                                       | Executive- Dox                            | kishan@cssindiagroup.com          |
| Atul Jaiswal                                      | Asst Manager – Docs & CRM                 | atuljaiswal@cssindiagroup.com     |
| Ekta Sawney                                       | Executive -CRM                            | ekta@cssindiagroup.com            |
| Prince Jawa                                       | Executive- Dox                            | importdox@cssindiagroup.com       |
| Sumit Kumar                                       | Executive - Dox                           | importdo@cssindiagroup.com        |
| Bhanu Saxena                                      | Jr Executive - CRM                        | csdelhi@cssindiagroup.com         |
| <b>Accounts</b>                                   |   |                                   |
| Sudeep V. Pillai                                  | Manager-Accounts                          | sudeep@cssindiagroup.com          |
| Vijay kr Jalla                                    | Sr. Executive-Accounts                    | vijayjalla@cssindiagroup.com      |
| Punno kumar                                       | Trainee Accounts                          | dineshk@cssindiagroup.com         |
| <b>MUMBAI</b>                                     |   |                                   |
| <b>Projects</b>                                   |   |                                   |

|                                |                                |                                   |
|--------------------------------|--------------------------------|-----------------------------------|
| Prabhakar Maniyan              | Vice President                 | prabhakar@cssindiagroup.com       |
| <b>Export Documentation</b>    |                                |                                   |
| A K Swamy                      | Manager                        | akswamy@cssindiagroup.com         |
| <b>Import / Airfreight</b>     |                                |                                   |
| Rahat Taleja                   | Vice President                 | rahat@cssindiagroup.com           |
| <b>Customer Service Export</b> |                                |                                   |
| Ranjit Rahulan                 | Manager                        | ranjitrahulan@cssindiagroup.com   |
| <b>Customer Service Import</b> |                                |                                   |
| Quresh Javiwala                | Manager                        | quresh@cssindiagroup.com          |
| <b>Import Documentation</b>    |                                |                                   |
| Sunny Mathew                   | Manager                        | sunny@cssindiagroup.com           |
| Devdatt Adivarekar             | Assistant Manager              | devdatt@cssindiagroup.com         |
| <b>Finance</b>                 |                                |                                   |
| R Krishnan                     | Manager Accounts               | krishnan@cssindiagroup.com        |
| <b>CHENNAI</b>                 |                                |                                   |
| Eugene A. Raj                  | Branch Manager                 | eugene@cssindiagroup.com          |
| Sathiyarayanan                 | Manager Accounts               | sathiya@cssindiagroup.com         |
| Jittendra                      | Manager Customer Service       | jittendra@cssindiagroup.com       |
| Satish                         | Assistant Export Documentation | expdocschn@cssindiagroup.com      |
| <b>TIRUPUR</b>                 |                                |                                   |
| T K Viswanath                  | General Manager, South India   | vishwanath@cssindiagroup.com      |
| Sabareesh C.V                  | Executive - Documentation      | docstup@cssindiagroup.com         |
| <b>COIMBATORE</b>              |                                |                                   |
| C Thainis Raj                  | Manager- Sales                 | ctr@cssindiagroup.com             |
| <b>TUTICORIN</b>               |                                |                                   |
| Rajesh                         | Executive - Operations         | csstuti@cssindiagroup.com         |
| <b>BANGALORE</b>               |                                |                                   |
| Sandeep Anthur                 | Branch Manager                 | sandeepa@cssindiagroup.com        |
| Vinod.S                        | Manager Sales & Marketing      | vinod@cssindiagroup.com           |
| <b>COCHIN</b>                  |                                |                                   |
| Latha Ashokan                  | Branch Manager                 | latha@cssindiagroup.com           |
| Betsy George                   | Executive Accounts             | accounts_cochin@cssindiagroup.com |
| Blessy George                  | Executive-Documentation        | docs_cok@cssindiagroup.com        |

## Dictionary of Office Evaluation

Some of you might like to know what the supervisor is really saying in all those glowing employee work performance evaluations he/she keeps cranking out.

**AVERAGE:** *Not too bright*

**EXCEPTIONALLY WELL QUALIFIED:** *Has committed no major blunders to date*

**ACTIVE SOCIALLY:** *Drinks heavily.*

**UNLIMITED POTENTIAL:** *Will stick with us until retirement*

**QUICK THINKING:** *Offers plausible excuses for errors.*

**TAKES ADVANTAGE OF EVERY OPPORTUNITY TO PROGRESS:** *Buys drinks for superiors*

**INDIFFERENT TO INSTRUCTION:** *Knows more than superiors*

**STERN DISCIPLINARIAN:** *A real jerk*

**TACTFUL IN DEALING WITH SUPERIORS:** *Knows when to keep mouth shut*

**APPROACHES DIFFICULT PROBLEMS WITH LOGIC:** *Finds someone else to do the job*

**A KEEN ANALYST:** *Thoroughly confused*

**EXPRESSES SELF WELL:** *Can string two sentences together*

**SPENDS EXTRA HOURS ON THE JOB:** *Miserable home life*

**DEMONSTRATES QUALITIES OF LEADERSHIP:** *Has a loud voice*

**JUDGEMENT IS USUALLY SOUND:** *Lucky.*

**KEEN SENSE OF HUMOR:** *Knows lots of dirty jokes*

**STRONG ADHERENCE TO PRINCIPLES:** *Stubborn*

**GETS ALONG EXTREMELY WELL WITH SUPERIORS AND SUBORDINATES ALIKE:** *A coward*

**SLIGHTLY BELOW AVERAGE:** *Stupid*

**OF GREAT VALUE TO THE ORGANIZATION:** *Turns in work on time.*

**ALERT TO COMPANY DEVELOPMENTS:** *An office gossip.*

**ENJOYS JOB:** *Needs more to do*

**CONSULTS WITH SUPERVISOR OFTEN:** *Annoying*

**USES TIME EFFECTIVELY:** *Clock watcher.*

**VERY CREATIVE:** *Finds 22 reasons to do anything except original work*

**USES RESOURCES WELL:** *Delegates everything*

**HAPPY:** *Paid too much*

Jokes  
Cafe



# inbound

| VESSEL             | VOY  | BAHRAIN | BANGKOK | BARCELONA | BREMEN | BUSAN  | COCHIN | HONGKONG | KARACHI | KEELUNG | KUWAIT | NHAVA SHEVA | NEW YORK | NINGBO | PORT KLANG | ROTTERDAM | SHANGHAI | SINGAPORE | SOUTHAMPTON | XINGANG | YOKOHAMA | JEBEL ALI |        |
|--------------------|------|---------|---------|-----------|--------|--------|--------|----------|---------|---------|--------|-------------|----------|--------|------------|-----------|----------|-----------|-------------|---------|----------|-----------|--------|
| KATHARINA S        | 411S | 1-Jul   |         |           |        |        |        |          |         |         |        |             |          |        |            |           |          |           |             |         |          |           | 4-Jul  |
| CIMBRIA            | 411S | 8-Jul   |         |           |        |        |        |          |         |         |        |             |          |        |            |           |          |           |             |         |          |           | 11-Jul |
| KATHARINA S        | 412S | 15-Jul  |         |           |        |        |        |          |         |         |        |             |          |        |            |           |          |           |             |         |          |           | 18-Jul |
| CIMBRIA            | 412S | 23-Jul  |         |           |        |        |        |          |         |         |        |             |          |        |            |           |          |           |             |         |          |           | 26-Jul |
| KATHARINA S        | 413S | 30-Jul  |         |           |        |        |        |          |         |         |        |             |          |        |            |           |          |           |             |         |          |           | 2-Aug  |
| CIMBRIA            | 413S | 6-Jul   |         |           |        |        |        |          |         |         |        |             |          |        |            |           |          |           |             |         |          |           | 9-Jul  |
| KATHARINA S        | 414S | 13-Aug  |         |           |        |        |        |          |         |         |        |             |          |        |            |           |          |           |             |         |          |           | 16-Aug |
| CIMBRIA            | 414S | 20-Aug  |         |           |        |        |        |          |         |         |        |             |          |        |            |           |          |           |             |         |          |           | 23-Aug |
| KATHARINA S        | 415S | 27-Aug  |         |           |        |        |        |          |         |         |        |             |          |        |            |           |          |           |             |         |          |           | 30-Aug |
| HYUNDAI JAKARTA    | 052W |         | 3-Jul   |           |        |        |        |          |         |         |        |             |          |        |            |           |          |           |             |         |          |           | 17-Jul |
| HYUNDAI CONFIDENCE | 529W |         | 10-Jul  |           |        |        |        |          |         |         |        |             |          |        |            |           |          |           |             |         |          |           | 24-Jul |
| HYUNDAI BUSAN      | 065W |         | 17-Jul  |           |        |        |        |          |         |         |        |             |          |        |            |           |          |           |             |         |          |           | 31-Jul |
| HYUNDAI BANGKOK    | 047W |         | 24-Jul  |           |        |        |        |          |         |         |        |             |          |        |            |           |          |           |             |         |          |           | 7-Aug  |
| HYUNDAI VANCOUVER  | 207W |         | 31-Jul  |           |        |        |        |          |         |         |        |             |          |        |            |           |          |           |             |         |          |           | 14-Aug |
| HYUNDAI SINGAPORE  | 062W |         | 7-Aug   |           |        |        |        |          |         |         |        |             |          |        |            |           |          |           |             |         |          |           | 21-Aug |
| HYUNDAI COLOMBO    | 064W |         | 14-Aug  |           |        |        |        |          |         |         |        |             |          |        |            |           |          |           |             |         |          |           | 28-Aug |
| HYUNDAI JAKARTA    | 053W |         | 21-Aug  |           |        |        |        |          |         |         |        |             |          |        |            |           |          |           |             |         |          |           | 4-Sep  |
| MAERSK SURABAYA    | 1409 |         |         | 6-Jul     |        |        |        |          |         |         |        |             |          |        |            |           |          |           |             |         |          |           | 27-Jul |
| MAERSK KIMI        | 1409 |         |         | 13-Jul    |        |        |        |          |         |         |        |             |          |        |            |           |          |           |             |         |          |           | 3-Aug  |
| MAERSK TAURUS      | 1411 |         |         | 20-Jul    |        |        |        |          |         |         |        |             |          |        |            |           |          |           |             |         |          |           | 10-Aug |
| MAERSK TAKUNG      | 1409 |         |         | 27-Jul    |        |        |        |          |         |         |        |             |          |        |            |           |          |           |             |         |          |           | 17-Aug |
| MAERSK TANJONG     | 1411 |         |         | 3-Aug     |        |        |        |          |         |         |        |             |          |        |            |           |          |           |             |         |          |           | 24-Aug |
| NORTHERN JAMBOREE  | 1411 |         |         | 10-Aug    |        |        |        |          |         |         |        |             |          |        |            |           |          |           |             |         |          |           | 31-Aug |
| MAERSK TUKANG      | 1413 |         |         | 17-Aug    |        |        |        |          |         |         |        |             |          |        |            |           |          |           |             |         |          |           | 7-Sep  |
| MAERSK SURABAYA    | 1411 |         |         | 24-Aug    |        |        |        |          |         |         |        |             |          |        |            |           |          |           |             |         |          |           | 14-Sep |
| NORTHERN JUSTICE   | 1405 |         |         |           | 1-Jul  |        |        |          |         |         |        |             |          |        |            |           |          |           |             |         |          |           | 22-Jul |
| MAERSK ALFRK       | 1409 |         |         |           | 8-Jul  |        |        |          |         |         |        |             |          |        |            |           |          |           |             |         |          |           | 29-Jul |
| AGIOS MINAS        | 1407 |         |         |           | 15-Jul |        |        |          |         |         |        |             |          |        |            |           |          |           |             |         |          |           | 5-Aug  |
| COLUMBINE MAERSK   | 1409 |         |         |           | 22-Jul |        |        |          |         |         |        |             |          |        |            |           |          |           |             |         |          |           | 12-Aug |
| DUMMY              | 1421 |         |         |           | 29-Jul |        |        |          |         |         |        |             |          |        |            |           |          |           |             |         |          |           | 19-Aug |
| DUMMY              | 1411 |         |         |           | 5-Aug  |        |        |          |         |         |        |             |          |        |            |           |          |           |             |         |          |           | 26-Aug |
| MAERSK SEOUL       | 1409 |         |         |           | 12-Aug |        |        |          |         |         |        |             |          |        |            |           |          |           |             |         |          |           | 2-Sep  |
| DUMMY 1 USZ        | 1403 |         |         |           | 19-Aug |        |        |          |         |         |        |             |          |        |            |           |          |           |             |         |          |           | 9-Sep  |
| MAERSK SINGAPORE   | 1409 |         |         |           | 26-Aug |        |        |          |         |         |        |             |          |        |            |           |          |           |             |         |          |           | 16-Sep |
| HONG KONG EXPRESS  | 7    |         |         |           |        | 1-Jul  |        |          |         |         |        |             |          |        |            |           |          |           |             |         |          |           | 23-Jul |
| APL SANTIAGO       | 3    |         |         |           |        | 7-Jul  |        |          |         |         |        |             |          |        |            |           |          |           |             |         |          |           | 5-Aug  |
| APL CHARLESTON     | 7    |         |         |           |        | 14-Jul |        |          |         |         |        |             |          |        |            |           |          |           |             |         |          |           | 12-Aug |
| APL MIAMI          | 4    |         |         |           |        | 21-Jul |        |          |         |         |        |             |          |        |            |           |          |           |             |         |          |           | 19-Aug |
| MOL COSMOS         | 35   |         |         |           |        | 28-Jul |        |          |         |         |        |             |          |        |            |           |          |           |             |         |          |           | 27-Aug |
| HYUNDAI DREAM      | 3    |         |         |           |        | 5-Aug  |        |          |         |         |        |             |          |        |            |           |          |           |             |         |          |           | 3-Sep  |
| HYUNDAI HOPE       | 3    |         |         |           |        | 12-Aug |        |          |         |         |        |             |          |        |            |           |          |           |             |         |          |           | 10-Sep |
| ANTWERPEN EXPRESS  | 6    |         |         |           |        | 19-Aug |        |          |         |         |        |             |          |        |            |           |          |           |             |         |          |           | 17-Sep |
| HYUNDAI AMBITION   | 11   |         |         |           |        | 26-Aug |        |          |         |         |        |             |          |        |            |           |          |           |             |         |          |           | 12-Jul |
| MAERSK AVON        | 1445 |         |         |           |        |        | 1-Jul  |          |         |         |        |             |          |        |            |           |          |           |             |         |          |           | 19-Jul |
| MAERSK AVON        | 1456 |         |         |           |        |        | 8-Jul  |          |         |         |        |             |          |        |            |           |          |           |             |         |          |           | 26-Jul |
| MAERSK AVON        | 1458 |         |         |           |        |        | 15-Jul |          |         |         |        |             |          |        |            |           |          |           |             |         |          |           | 2-Aug  |
| MAERSK AVON        | 1460 |         |         |           |        |        | 22-Jul |          |         |         |        |             |          |        |            |           |          |           |             |         |          |           | 9-Aug  |
| MAERSK AVON        | 1462 |         |         |           |        |        | 29-Jul |          |         |         |        |             |          |        |            |           |          |           |             |         |          |           | 16-Aug |
| MAERSK AVON        | 1464 |         |         |           |        |        | 5-Aug  |          |         |         |        |             |          |        |            |           |          |           |             |         |          |           | 23-Aug |
| MAERSK AVON        | 1466 |         |         |           |        |        | 12-Aug |          |         |         |        |             |          |        |            |           |          |           |             |         |          |           | 30-Aug |
| MAERSK AVON        | 1468 |         |         |           |        |        | 19-Aug |          |         |         |        |             |          |        |            |           |          |           |             |         |          |           | 6-Sep  |
| MAERSK AVON        | 1470 |         |         |           |        |        | 26-Aug |          |         |         |        |             |          |        |            |           |          |           |             |         |          |           | 18-Jul |
| HYUNDAI JAKARTA    | 052W |         |         |           |        |        |        | 3-Jul    |         |         |        |             |          |        |            |           |          |           |             |         |          |           | 24-Jul |
| HYUNDAI CONFIDENCE | 529W |         |         |           |        |        |        | 9-Jul    |         |         |        |             |          |        |            |           |          |           |             |         |          |           | 31-Jul |
| HYUNDAI BUSAN      | 065W |         |         |           |        |        |        | 16-Jul   |         |         |        |             |          |        |            |           |          |           |             |         |          |           | 7-Aug  |
| HYUNDAI BANGKOK    | 047W |         |         |           |        |        |        | 23-Jul   |         |         |        |             |          |        |            |           |          |           |             |         |          |           | 14-Aug |
| HYUNDAI VANCOUVER  | 207W |         |         |           |        |        |        | 30-Jul   |         |         |        |             |          |        |            |           |          |           |             |         |          |           | 21-Aug |
| HYUNDAI SINGAPORE  | 062W |         |         |           |        |        |        | 6-Aug    |         |         |        |             |          |        |            |           |          |           |             |         |          |           | 28-Aug |
| HYUNDAI COLOMBO    | 064W |         |         |           |        |        |        | 13-Aug   |         |         |        |             |          |        |            |           |          |           |             |         |          |           | 4-Sep  |
| HYUNDAI JAKARTA    | 053W |         |         |           |        |        |        | 20-Aug   |         |         |        |             |          |        |            |           |          |           |             |         |          |           | 30-Jul |
| HYUNDAI CONFIDENCE | 528W |         |         |           |        |        |        | 6-Jul    |         |         |        |             |          |        |            |           |          |           |             |         |          |           | 6-Aug  |
| HYUNDAI BUSAN      | 065W |         |         |           |        |        |        | 13-Jul   |         |         |        |             |          |        |            |           |          |           |             |         |          |           | 13-Aug |
| HYUNDAI BANGKOK    | 047W |         |         |           |        |        |        | 20-Jul   |         |         |        |             |          |        |            |           |          |           |             |         |          |           | 20-Aug |
| HYUNDAI VANCOUVER  | 207W |         |         |           |        |        |        | 27-Jul   |         |         |        |             |          |        |            |           |          |           |             |         |          |           | 27-Aug |
| HYUNDAI SINGAPORE  | 062W |         |         |           |        |        |        | 3-Aug    |         |         |        |             |          |        |            |           |          |           |             |         |          |           | 3-Sep  |
| HYUNDAI COLOMBO    | 064W |         |         |           |        |        |        | 10-Aug   |         |         |        |             |          |        |            |           |          |           |             |         |          |           | 10-Sep |
| HYUNDAI JAKARTA    | 053W |         |         |           |        |        |        | 17-Aug   |         |         |        |             |          |        |            |           |          |           |             |         |          |           | 17-Sep |
| HYUNDAI CONFIDENCE | 530W |         |         |           |        |        |        | 24-Aug   |         |         |        |             |          |        |            |           |          |           |             |         |          |           | 18-Jul |
| HYUNDAI JAKARTA    | 052W |         |         |           |        |        |        | 1-Jul    |         |         |        |             |          |        |            |           |          |           |             |         |          |           | 24-Jul |
| HYUNDAI CONFIDENCE | 529W |         |         |           |        |        |        | 7-Jul    |         |         |        |             |          |        |            |           |          |           |             |         |          |           | 31-Jul |
| HYUNDAI BUSAN      | 065W |         |         |           |        |        |        | 14-Jul   |         |         |        |             |          |        |            |           |          |           |             |         |          |           | 7-Aug  |
| HYUNDAI BANGKOK    | 047W |         |         |           |        |        |        | 21-Jul   |         |         |        |             |          |        |            |           |          |           |             |         |          |           | 14-Aug |
| HYUNDAI VANCOUVER  | 207W |         |         |           |        |        |        | 28-Jul   |         |         |        |             |          |        |            |           |          |           |             |         |          |           | 21-Aug |
| HYUNDAI SINGAPORE  | 062W |         |         |           |        |        |        | 4-Aug    |         |         |        |             |          |        |            |           |          |           |             |         |          |           | 28-Aug |
| HYUNDAI COLOMBO    | 064W |         |         |           |        |        |        | 11-Aug   |         |         |        |             |          |        |            |           |          |           |             |         |          |           | 4-Sep  |
| HYUNDAI JAKARTA    | 053W |         |         |           |        |        |        | 18-Aug   |         |         |        |             |          |        |            |           |          |           |             |         |          |           | 11-Sep |
| HYUNDAI CONFIDENCE | 530W |         |         |           |        |        |        | 25-Aug   |         |         |        |             |          |        |            |           |          |           |             |         |          |           | 6-Jul  |
| NICOLINE MAERSK    | 1451 |         |         |           |        |        |        |          |         |         | 2-Jul  |             |          |        |            |           |          |           |             |         |          |           | 13-Jul |
| NICOLINE MAERSK    | 1453 |         |         |           |        |        |        |          |         |         | 9-Jul  |             |          |        |            |           |          |           |             |         |          |           | 20-Jul |
| NICOLINE MAERSK    | 1455 |         |         |           |        |        |        |          |         |         | 16-Jul |             |          |        |            |           |          |           |             |         |          |           | 27-Jul |
| NICOLINE MAERSK    | 1457 |         |         |           |        |        |        |          |         |         | 23-Jul |             |          |        |            |           |          |           |             |         |          |           | 3-Aug  |
| NICOLINE MAERSK    | 1459 |         |         |           |        |        |        |          |         |         | 30-Jul |             |          |        |            |           |          |           |             |         |          |           | 10-Aug |
| NICOLINE MAERSK    | 1461 |         |         |           |        |        |        |          |         |         | 6-Aug  |             |          |        |            |           |          |           |             |         |          |           | 17-Aug |
| NICOLINE MAERSK    | 1463 |         |         |           |        |        |        |          |         |         | 13-Aug |             |          |        |            |           |          |           |             |         |          |           |        |

ABOVE MENTIONED ARE TENTATIVE VESSELS AND ARE SUBJECT TO CHANGE.

| VESSEL             | VOY    | BAHRAIN | BANGKOK | BARCELONA | BREMEN | BUSAN | COCHIN | HONGKONG | KARACHI | KEELUNG | KUWAIT | NHAVA SHEVA | NEW YORK | NINGBO | PORT KLANG | ROTTERDAM | SHANGHAI | SINGAPORE | SOUTHAMPTON | XINGANG | YOKOHAMA | JEBEL ALI |        |
|--------------------|--------|---------|---------|-----------|--------|-------|--------|----------|---------|---------|--------|-------------|----------|--------|------------|-----------|----------|-----------|-------------|---------|----------|-----------|--------|
| NICOLINE MAERSK    | 1465   |         |         |           |        |       |        |          |         |         | 20-Aug |             |          |        |            |           |          |           |             |         |          |           | 24-Aug |
| NICOLINE MAERSK    | 1467   |         |         |           |        |       |        |          |         |         | 27-Aug |             |          |        |            |           |          |           |             |         |          |           | 31-Aug |
| VILLE DE AQUARIUS  | 5      |         |         |           |        |       |        |          |         |         |        | 6-Jul       |          |        |            |           |          |           |             |         |          |           | 10-Jul |
| APL SHARJAH        | 26     |         |         |           |        |       |        |          |         |         |        | 13-Jul      |          |        |            |           |          |           |             |         |          |           | #REF!  |
| VILLE DE AQUARIUS  | 6      |         |         |           |        |       |        |          |         |         |        | 20-Jul      |          |        |            |           |          |           |             |         |          |           | 24-Jul |
| APL SHARJAH        | 27     |         |         |           |        |       |        |          |         |         |        | 27-Jul      |          |        |            |           |          |           |             |         |          |           | #REF!  |
| VILLE DE AQUARIUS  | 7      |         |         |           |        |       |        |          |         |         |        | 3-Aug       |          |        |            |           |          |           |             |         |          |           |        |
| APL SHARJAH        | 28     |         |         |           |        |       |        |          |         |         |        | 10-Aug      |          |        |            |           |          |           |             |         |          |           |        |
| VILLE DE AQUARIUS  | 8      |         |         |           |        |       |        |          |         |         |        | 17-Aug      |          |        |            |           |          |           |             |         |          |           |        |
| APL SHARJAH        | 29     |         |         |           |        |       |        |          |         |         |        | 24-Aug      |          |        |            |           |          |           |             |         |          |           |        |
| MAERSK CHICAGO     | 1409   |         |         |           |        |       |        |          |         |         |        |             | 5-Jul    |        |            |           |          |           |             |         |          |           | 26-Jul |
| MAERSK DENVER      | 1409   |         |         |           |        |       |        |          |         |         |        |             | 11-Jul   |        |            |           |          |           |             |         |          |           | 1-Aug  |
| MAERSK DETROIT     | 1409   |         |         |           |        |       |        |          |         |         |        |             | 18-Jul   |        |            |           |          |           |             |         |          |           | 8-Aug  |
| MAERSK MEMPHIS     | 1409   |         |         |           |        |       |        |          |         |         |        |             | 25-Jul   |        |            |           |          |           |             |         |          |           | 15-Aug |
| MAERSK COLUMBUS    | 1409   |         |         |           |        |       |        |          |         |         |        |             | 1-Aug    |        |            |           |          |           |             |         |          |           | 22-Aug |
| MAERSK PITTSBURGH  | 1409   |         |         |           |        |       |        |          |         |         |        |             | 8-Aug    |        |            |           |          |           |             |         |          |           | 29-Aug |
| MAERSK HARTFORD    | 1411   |         |         |           |        |       |        |          |         |         |        |             | 15-Aug   |        |            |           |          |           |             |         |          |           | 5-Sep  |
| MAERSK ATLANTA     | 1411   |         |         |           |        |       |        |          |         |         |        |             | 22-Aug   |        |            |           |          |           |             |         |          |           | 12-Sep |
| HYUNDAI CONFIDENCE | 529W   |         |         |           |        |       |        |          |         |         |        |             |          | 5-Jul  |            |           |          |           |             |         |          |           | 24-Jul |
| HYUNDAI BUSAN      | 065W   |         |         |           |        |       |        |          |         |         |        |             |          | 12-Jul |            |           |          |           |             |         |          |           | 31-Jul |
| HYUNDAI BANGKOK    | 047W   |         |         |           |        |       |        |          |         |         |        |             |          | 19-Jul |            |           |          |           |             |         |          |           | 7-Aug  |
| HYUNDAI VANCOUVER  | 207W   |         |         |           |        |       |        |          |         |         |        |             |          | 26-Jul |            |           |          |           |             |         |          |           | 14-Aug |
| HYUNDAI SINGAPORE  | 062W   |         |         |           |        |       |        |          |         |         |        |             |          | 2-Aug  |            |           |          |           |             |         |          |           | 21-Aug |
| HYUNDAI COLOMBO    | 064W   |         |         |           |        |       |        |          |         |         |        |             |          | 9-Aug  |            |           |          |           |             |         |          |           | 28-Aug |
| HYUNDAI JAKARTA    | 053W   |         |         |           |        |       |        |          |         |         |        |             |          | 16-Aug |            |           |          |           |             |         |          |           | 4-Sep  |
| HYUNDAI CONFIDENCE | 530W   |         |         |           |        |       |        |          |         |         |        |             |          | 23-Aug |            |           |          |           |             |         |          |           | 11-Sep |
| EVER LOGIC 1362    | 007W   |         |         |           |        |       |        |          |         |         |        |             |          |        |            |           |          | 8-Jul     |             |         |          |           | 29-Jul |
| EVER SUPERB 1363   | 048W   |         |         |           |        |       |        |          |         |         |        |             |          |        |            |           |          | 14-Jul    |             |         |          |           | 4-Aug  |
| EVER LEADER 1364   | 009W   |         |         |           |        |       |        |          |         |         |        |             |          |        |            |           |          | 21-Jul    |             |         |          |           | 11-Aug |
| HYUNDAI SPLENDOR   | 037W   |         |         |           |        |       |        |          |         |         |        |             |          |        |            |           |          | 28-Jul    |             |         |          |           | 18-Aug |
| ITAL CONTESSA 1366 | 057W   |         |         |           |        |       |        |          |         |         |        |             |          |        |            |           |          | 4-Aug     |             |         |          |           | 25-Aug |
| EVER SMART 1367    | 053W   |         |         |           |        |       |        |          |         |         |        |             |          |        |            |           |          | 11-Aug    |             |         |          |           | 1-Sep  |
| EVER LOYAL 1368    | 004W   |         |         |           |        |       |        |          |         |         |        |             |          |        |            |           |          | 18-Aug    |             |         |          |           | 8-Sep  |
| EVER LOGIC 1369    | 008W   |         |         |           |        |       |        |          |         |         |        |             |          |        |            |           |          | 25-Aug    |             |         |          |           | 15-Sep |
| EVER SMART         | 052W   |         |         |           |        |       |        |          |         |         |        |             |          |        |            |           |          |           | 3-Jul       |         |          |           | 13-Jul |
| HYUNDAI JAKARTA    | 052W   |         |         |           |        |       |        |          |         |         |        |             |          |        |            |           |          |           | 7-Jul       |         |          |           | 17-Jul |
| HYUNDAI CONFIDENCE | 529W   |         |         |           |        |       |        |          |         |         |        |             |          |        |            |           |          |           | 14-Jul      |         |          |           | 24-Jul |
| HYUNDAI BUSAN      | 065W   |         |         |           |        |       |        |          |         |         |        |             |          |        |            |           |          |           | 21-Jul      |         |          |           | 31-Jul |
| HYUNDAI BANGKOK    | 047W   |         |         |           |        |       |        |          |         |         |        |             |          |        |            |           |          |           | 28-Jul      |         |          |           | 7-Aug  |
| HYUNDAI VANCOUVER  | 207W   |         |         |           |        |       |        |          |         |         |        |             |          |        |            |           |          |           | 4-Aug       |         |          |           | 14-Aug |
| HYUNDAI SINGAPORE  | 062W   |         |         |           |        |       |        |          |         |         |        |             |          |        |            |           |          |           | 11-Aug      |         |          |           | 21-Aug |
| HYUNDAI COLOMBO    | 064W   |         |         |           |        |       |        |          |         |         |        |             |          |        |            |           |          |           | 18-Aug      |         |          |           | 28-Aug |
| HYUNDAI JAKARTA    | 053W   |         |         |           |        |       |        |          |         |         |        |             |          |        |            |           |          |           | 25-Aug      |         |          |           | 4-Sep  |
| CMA CGM MAUPASSANT | EPA91E |         |         |           |        |       |        |          |         |         |        |             |          |        |            |           |          |           |             | 7-Jul   |          |           | 2-Aug  |
| CMA CGM NERVAL     | EPA93E |         |         |           |        |       |        |          |         |         |        |             |          |        |            |           |          |           |             | 14-Jul  |          |           | 9-Aug  |
| CMA CGM BERLIOZ    | EPA95E |         |         |           |        |       |        |          |         |         |        |             |          |        |            |           |          |           |             | 21-Jul  |          |           | 14-Aug |
| CMA CGM VERDI      | EPA97E |         |         |           |        |       |        |          |         |         |        |             |          |        |            |           |          |           |             | 28-Jul  |          |           | 21-Aug |
| CMA CGM BALZAC     | EPA99E |         |         |           |        |       |        |          |         |         |        |             |          |        |            |           |          |           |             | 1-Aug   |          |           | 25-Aug |
| CMA CGM STRAUSS    | EPB01E |         |         |           |        |       |        |          |         |         |        |             |          |        |            |           |          |           |             | 11-Aug  |          |           | 4-Sep  |
| CMA CGM CORNELLE   | EPB03E |         |         |           |        |       |        |          |         |         |        |             |          |        |            |           |          |           |             | 18-Aug  |          |           | 11-Sep |
| CMA CGM LAMARTINE  | EPB05E |         |         |           |        |       |        |          |         |         |        |             |          |        |            |           |          |           |             | 25-Aug  |          |           | 18-Sep |
| MAERSK DUBROVNIK   | 1402   |         |         |           |        |       |        |          |         |         |        |             |          |        |            |           |          |           |             |         | 2-Jul    |           | 28-Jul |
| SEA-LAND METEOR    | 1410   |         |         |           |        |       |        |          |         |         |        |             |          |        |            |           |          |           |             |         | 9-Jul    |           | 4-Aug  |
| SEA-LAND MERCURY   | 1414   |         |         |           |        |       |        |          |         |         |        |             |          |        |            |           |          |           |             |         | 16-Jul   |           | 11-Aug |
| MAERSK GATESHEAD   | 1410   |         |         |           |        |       |        |          |         |         |        |             |          |        |            |           |          |           |             |         | 23-Jul   |           | 18-Aug |
| SEA-LAND CHAMPION  | 1414   |         |         |           |        |       |        |          |         |         |        |             |          |        |            |           |          |           |             |         | 30-Jul   |           | 25-Aug |
| SAFMARINE NOKWANDA | 1412   |         |         |           |        |       |        |          |         |         |        |             |          |        |            |           |          |           |             |         | 6-Aug    |           | 1-Sep  |
| MAERSK DUBROVNIK   | 1404   |         |         |           |        |       |        |          |         |         |        |             |          |        |            |           |          |           |             |         | 13-Aug   |           | 8-Sep  |
| SEA-LAND METEOR    | 1412   |         |         |           |        |       |        |          |         |         |        |             |          |        |            |           |          |           |             |         | 20-Aug   |           | 15-Sep |
| MAERSK STOCKHOLM   | 1406   |         |         |           |        |       |        |          |         |         |        |             |          |        |            |           |          |           |             |         |          | 4-Jul     | 4-Aug  |
| CHASTINE MAERSK    | 1406   |         |         |           |        |       |        |          |         |         |        |             |          |        |            |           |          |           |             |         |          | 11-Jul    | 11-Aug |
| SKAGEN MAERSK      | 1408   |         |         |           |        |       |        |          |         |         |        |             |          |        |            |           |          |           |             |         |          | 18-Jul    | 18-Aug |
| MAERSK STEPNIKA    | 1408   |         |         |           |        |       |        |          |         |         |        |             |          |        |            |           |          |           |             |         |          | 25-Jul    | 25-Aug |
| MAERSK SALINA      | 1408   |         |         |           |        |       |        |          |         |         |        |             |          |        |            |           |          |           |             |         |          | 1-Aug     | 1-Sep  |
| SUSAN MAERSK       | 1408   |         |         |           |        |       |        |          |         |         |        |             |          |        |            |           |          |           |             |         |          | 8-Aug     | 8-Sep  |
| SOFIE MAERSK       | 1408   |         |         |           |        |       |        |          |         |         |        |             |          |        |            |           |          |           |             |         |          | 15-Aug    | 15-Sep |
| SVENDBORG MAERSK   | 1408   |         |         |           |        |       |        |          |         |         |        |             |          |        |            |           |          |           |             |         |          | 22-Aug    | 22-Sep |
| HYUNDAI JAKARTA    | 052W   |         |         |           |        |       |        |          |         |         |        |             |          |        |            |           |          |           |             |         |          |           | 17-Jul |
| HYUNDAI CONFIDENCE | 529W   |         |         |           |        |       |        |          |         |         |        |             |          |        |            |           |          |           |             |         |          |           | 24-Jul |
| HYUNDAI BUSAN      | 065W   |         |         |           |        |       |        |          |         |         |        |             |          |        |            |           |          |           |             |         |          |           | 31-Jul |
| HYUNDAI BANGKOK    | 047W   |         |         |           |        |       |        |          |         |         |        |             |          |        |            |           |          |           |             |         |          |           | 7-Aug  |
| HYUNDAI VANCOUVER  | 207W   |         |         |           |        |       |        |          |         |         |        |             |          |        |            |           |          |           |             |         |          |           | 14-Aug |
| HYUNDAI SINGAPORE  | 062W   |         |         |           |        |       |        |          |         |         |        |             |          |        |            |           |          |           |             |         |          |           | 21-Aug |
| HYUNDAI COLOMBO    | 064W   |         |         |           |        |       |        |          |         |         |        |             |          |        |            |           |          |           |             |         |          |           | 28-Aug |
| HYUNDAI JAKARTA    | 053W   |         |         |           |        |       |        |          |         |         |        |             |          |        |            |           |          |           |             |         |          |           | 4-Sep  |
| GUSTAV MAERSK      | 1403   |         |         |           |        |       |        |          |         |         |        |             |          |        |            |           |          |           |             |         |          |           | 22-Jul |
| NORTHERN JUSTICE   | 1405   |         |         |           |        |       |        |          |         |         |        |             |          |        |            |           |          |           |             |         |          |           | 29-Jul |
| MAERSK ALERIK      | 1409   |         |         |           |        |       |        |          |         |         |        |             |          |        |            |           |          |           |             |         |          |           | 5-Aug  |
| AGIOS MINAS        | 1407   |         |         |           |        |       |        |          |         |         |        |             |          |        |            |           |          |           |             |         |          |           | 12-Aug |
| COLUMBINE MAERSK   | 1409   |         |         |           |        |       |        |          |         |         |        |             |          |        |            |           |          |           |             |         |          |           | 19-Aug |
| DUMMY              | 1421   |         |         |           |        |       |        |          |         |         |        |             |          |        |            |           |          |           |             |         |          |           | 26-Aug |
| DUMMY              | 1411   |         |         |           |        |       |        |          |         |         |        |             |          |        |            |           |          |           |             |         |          |           | 2-Sep  |
| MAERSK SEOUL       | 1409   |         |         |           |        |       |        |          |         |         |        |             |          |        |            |           |          |           |             |         |          |           | 9-Sep  |
| DUMMY 1 U2S        | 1403   |         |         |           |        |       |        |          |         |         |        |             |          |        |            |           |          |           |             |         |          |           | 16-Sep |

ABOVE MENTIONED ARE TENTATIVE VESSELS AND ARE SUBJECT TO CHANGE.





**TOP MANAGEMENT**

**CONTACTS**

|  |   |  |   |  |  |
|--|---|--|---|--|--|
| <p>T S Kaladharan<br/>Anil Kumar<br/>Raj George<br/>Ahmed Al Rais<br/>Kenneth Allan Dinnadge<br/>Rajagopal</p>   | <p>Chairman<br/>Director - Finance &amp; Admin<br/>Senior V P - Projects, Oil &amp; Energy<br/>Senior V P - Airfreight<br/>Vice President - Business Development<br/>Sr. GM - Finance</p>   | <p>kala@cssdubai.com<br/>anil@cssdubai.com<br/>george@cssdubai.com<br/>ahmed@cssdubai.com<br/>ken@cssdubai.com<br/>raj@cssdubai.com</p>  | <p>Sreenath V<br/>Siby C Kurian<br/>Ajay Krishnan<br/>Arijun Bose<br/>Chandrikala (CK)</p>  | <p>Sr. GM - Projects Oil &amp; Energy / Ops<br/>Sr. GM - Sales &amp; Marketing<br/>Sr. GM - Ocean Freight<br/>Director - CSS Abu Dhabi<br/>Manager Operations - Ocean Freight</p>  | <p>sreenath@cssdubai.com<br/>siby@cssdubai.com<br/>ajay@cssdubai.com<br/>arijun@cssabudhabi.com<br/>ckala@cssdubai.com</p>   |
| <p><b>MARKETING</b><br/>Amith Horra<br/><b>SALES (DUBAI) 1</b><br/>Rosh Manoli<br/>Ebje Babu<br/>Anoop Jose<br/>Vysakh P.S.<br/>Abith T.S.<br/><b>SALES (DUBAI) 2</b><br/>Richard Varghese<br/>Ranjith Nair<br/>Nishad Radhakrishnan<br/>Arif Suleman Khatri<br/>Saranya C Remanan<br/><b>SALES (NVOCC)</b><br/>Fida Asghar<br/>Kiran Cherian<br/>Ranjith Haridas<br/>Robin Mathew<br/>Prasad Nichal<br/>Anuraj TC<br/>Sherin E Vincent<br/>Merlin Raj<br/>Mujeeb Althaf<br/>Anupama Varghese<br/>Rahul Haridas<br/>Anoop Banerjee<br/><b>TEAM FORWARDING</b><br/>Thushara Nishaman<br/>Duminda De Silva<br/>Tasleem S Patka<br/>Thomas Paul<br/>Rojy Kinadath<br/>Smitha Nishi<br/>Robin K.G.<br/>Akhil Prabha<br/><b>PRICING / KEY INFORMATION DESK</b><br/>Raufa Shaikh<br/>Thomas Mathew<br/>Apama Renjit<br/>Rishi R Prasad<br/>Girish Kumar<br/>Shabas C.P.<br/>Clifford R<br/>Gautham Gopan<br/>Raunak Khandelwal<br/><b>AIR FREIGHT</b><br/>Jacob Isaac<br/>Baiju Sadanand<br/>Suranga<br/>Shijo</p> | <p>Marketing Manager<br/><br/>Team / RDM - (North America)<br/>Sales Executive<br/>Sales Executive<br/>Coordinator<br/>Coordinator<br/><br/>BDM - Team Head<br/>Key Account Manager<br/>Sales Executive<br/>Coordinator<br/>Coordinator<br/><br/>Team Manager - NVOCC<br/>Team Leader<br/>Team Leader<br/>Sales Executive<br/>Sales Executive<br/>Sales Coordinator<br/>Sales Coordinator<br/>Sales Coordinator<br/>Sales Coordinator<br/>Sales Coordinator<br/>Sales Coordinator<br/><br/>BDM<br/>BDM<br/>BDM<br/>BDM<br/>Sales Coordinator<br/>Sales Coordinator<br/>Sales Coordinator<br/><br/>Manager<br/>Asst. Manager- Key Information Desk<br/>Team Leader- Key Information Desk<br/>Coordinator - Pricing<br/>Sr. Coordinator- Key Information Desk<br/>Coordinator- Key Information Desk<br/>Coordinator- Key Information Desk<br/>Coordinator- Key Information Desk<br/>Coordinator- Key Information Desk<br/><br/>General Manager<br/>Manager - Operations<br/>Asst. Manager - Operations<br/>Operations Assistant-Imports</p> | <p>amith@cssdubai.com<br/><br/>roshmon@cssdubai.com<br/>ebje@cssdubai.com<br/>anoop@cssdubai.com<br/>vysakh@cssdubai.com<br/>abith@cssdubai.com<br/><br/>richard@cssdubai.com<br/>ranjithnair@cssdubai.com<br/>nishad@cssdubai.com<br/>arifs@cssdubai.com<br/>saranya@cssdubai.com<br/><br/>fida@cssdubai.com<br/>kiranc@cssdubai.com<br/>ranjithharidas@cssdubai.com<br/>robinm@cssdubai.com<br/>n.prasad@cssdubai.com<br/>anuraj@cssdubai.com<br/>sherin@cssdubai.com<br/>merlin@cssdubai.com<br/>mujeeb@cssdubai.com<br/>anupama@cssdubai.com<br/>rahulh@cssdubai.com<br/>anoopb@cssdubai.com<br/><br/>thushara@cssdubai.com<br/>duminda@cssdubai.com<br/>tasleem@cssdubai.com<br/>thomaspaul@cssdubai.com<br/>rojy@cssdubai.com<br/>smitha@cssdubai.com<br/>robinkg@cssdubai.com<br/>akhil@cssdubai.com<br/><br/>raufa@cssdubai.com<br/>thomas@cssdubai.com<br/>apamar@cssdubai.com<br/>rishi@cssdubai.com<br/>girish@cssdubai.com<br/>shabas@cssdubai.com<br/>clifford.r@cssdubai.com<br/>gautham@cssdubai.com<br/>raunak@cssdubai.com<br/><br/>jacob@cssdubai.com<br/>baiju@cssdubai.com<br/>suranga@cssdubai.com<br/>shijo@cssdubai.com</p> | <p>Varun Babu<br/>Roshin<br/>Thambies<br/>Prasanth<br/>Tobin<br/><b>PROJECTS, OIL &amp; ENERGY</b><br/>Ahmad Fuad<br/>Sajith Vijayan<br/>Ambilii Don<br/>Swan Chacko<br/>Ratheesh Nair<br/>Ameef Challa<br/>Bifto Babu<br/>Mehsoob<br/>Osama Amii<br/><b>SALES PLUS</b><br/>Arun Jayakumar<br/>Ashok Sankar<br/>Rashmi Praveen<br/><b>SALES (TEAM JEBEL ALI) 1</b><br/>Hinna Hussain<br/>Vibin George<br/>Sanjeev Kumar<br/>Richard Salvius<br/><b>OCEAN FREIGHT &amp; CFS OPERATIONS</b><br/>Don Raveendran<br/>Vishnu Nazir<br/>Udheesh<br/>Jayandan P I<br/>Rejinish<br/><b>CUSTOMS DOCUMENTATION</b><br/>Rowmahs<br/>Ansar Ali<br/><b>CSLC-2 (SUPPLY CHAIN MANAGEMENT)</b><br/>Hareesh M Haridas<br/>Sunil Kumar<br/>Nisha Murali<br/>Biju Babu<br/>Aneesh Nair<br/>Sreedev C.S<br/><b>LAND TRANSPORT</b><br/>Sudhir R<br/>Pramod Kumar<br/>Renjith Pushpasagaran<br/><b>FINANCE</b><br/>S. Subhashini<br/><b>HR &amp; ADMIN.</b><br/>Susanth Shekar<br/>Shelly Varkey<br/>Cheryl Annes<br/>Hassan Haji</p> | <p>Operations Assistant-Imports<br/>Operations Assistant-Exports<br/>Operations Assistant-Perishable<br/>Operations Coordinator<br/><br/>Sr. BDM<br/>Manager - Operations<br/>Team Leader<br/>Operations Supervisor<br/>Operations Executive<br/>Coordinator<br/>Sales Executive<br/>Jr. Coordinator<br/>Customs Documentation<br/><br/>Sr. Coordinator<br/>Coordinator<br/>Coordinator<br/><br/>Team Manager<br/>Sales Executive<br/>Sales Executive<br/>Coordinator<br/><br/>Asst. Manager<br/>Team Leader NVOCC Ops.<br/>Team Leader- Forwarding Ops.<br/>Team Leader CFS Operations<br/>Sr.Ops Executive - LCL Exports<br/><br/>Supervisor<br/>Customs Documentation<br/><br/>Manager - Logistics<br/>Warehouse Supervisor<br/>Coordinator - Logistics<br/>Coordinator - Operations<br/>Jr. Coordinator - Logistics<br/>Jr. Coordinator - Operations<br/><br/>Supervisor<br/>Coordinator (FCL)<br/>Coordinator (LCL)<br/><br/>Credit Controller<br/><br/>Manager - HR<br/>Manager - Admin<br/>Exe. Secretary - Chairman's Office<br/>PRO</p> | <p>varunbabu@cssdubai.com<br/>roshin@cssdubai.com<br/>thambies@cssdubai.com<br/>prasanth@cssdubai.com<br/>tobin@cssdubai.com<br/><br/>fuad@cssdubai.com<br/>sajithv@cssdubai.com<br/>ambilidon@cssdubai.com<br/>chacko@cssdubai.com<br/>ratheesh@cssdubai.com<br/>ameef.challa@cssdubai.com<br/>bifto@cssdubai.com<br/>mehsoob@cssdubai.com<br/>osama@cssdubai.com<br/><br/>arunjayakumar@cssdubai.com<br/>ashoks@cssdubai.com<br/>rashmip@cssdubai.com<br/><br/>hinna@cssdubai.com<br/>vibin@cssdubai.com<br/>sanjeev@cssdubai.com<br/>s.richard@cssdubai.com<br/><br/>don@cssdubai.com<br/>vishnu@cssdubai.com<br/>udheesh@cssdubai.com<br/>jayandan@cssdubai.com<br/>rejinish@cssdubai.com<br/><br/>rowmahs@cssdubai.com<br/>ansar@cssdubai.com<br/><br/>hareesh@cssdubai.com<br/>sunil@fmcglogistics.net<br/>nisha@fmcglogistics.net<br/>bijub@fmcglogistics.net<br/>aneesh@fmcglogistics.net<br/>sreedev@fmcglogistics.net<br/><br/>sudhir@cssdubai.com<br/>pramod@cssdubai.com<br/>renjithp@cssdubai.com<br/><br/>subhashini@cssdubai.com<br/><br/>susanth@cssdubai.com<br/>shelly@cssdubai.com<br/>cherylannes@cssdubai.com<br/>hassan@cssdubai.com</p> |

**Middle East**

**Consolidated Shipping Services L.L.C.**

Corporate Office, P.O. Box 27802, Dubai, UAE  
Tel: +971 4 3248884, Fax: +971 4 3249994  
Email: [info@cssdubai.com](mailto:info@cssdubai.com)

Dubai International Airport Cargo Gateway (Dubai Cargo Village)  
P.O. Box 27802, Dubai, UAE  
Tel: +971 4 2826176, Fax: +971 4 2826179  
Email: [info@cssdubai.com](mailto:info@cssdubai.com)

**Consolidated Shipping Logistics Centre 1- CFS**

P.O. Box 61334, Jebel Ali, Dubai, UAE  
Tel: +971 4 8872333, Fax: +971 4 8872335  
Email: [cfsoperations@cssdubai.com](mailto:cfsoperations@cssdubai.com)

**Consolidated Shipping Logistics Centre 2 - SCM**

P.O. Box 18595, Jebel Ali, Dubai, UAE  
Tel: +971 4 8873999, Fax: +971 4 8818696  
Email: [info@fmcglogistics.net](mailto:info@fmcglogistics.net)

**Consolidated Shipping Services L.L.C. Abu Dhabi**

P.O. Box 32454, Abu Dhabi, UAE  
Tel: +971 2 6431717, Fax: +971 2 6431919  
Email: [info@cssabudhabi.com](mailto:info@cssabudhabi.com)

**Consolidated Shipping Services W.L.L. Bahrain**

P.O. Box 2209, Manama, Bahrain  
Tel: +973 17540106, Fax: +973 17540107  
Email: [info@cslbahrain.com](mailto:info@cslbahrain.com)



RELOCATIONS • EXHIBITIONS & EVENTS • INDUSTRIAL PACKING • LASHING • CRATING

**CSS Homeward Bound**

Dubai Creek Customs - Customs Wharfage  
Warehouse B  
P. O. Box 27802, Dubai, UAE  
Tel: +971 4 2227780, Fax: +971 4 2223445  
Email : [info@csshomeward.com](mailto:info@csshomeward.com)

[www.cssgroupsite.com](http://www.cssgroupsite.com)

|  |  |   |   |   |  |
|--|--|---|---|---|--|
| Dewya D.<br><b>INFORMATION TECHNOLOGY</b><br>Biju Damodaran<br>Arunkumar S<br><b>CSS HOMEWARD BOUND / INDUSTRIAL PACKING AND LASHING</b><br>Suku Sudhakaran<br>Rajesh Kandiyam<br>Jesse Estrada<br>Vinod Sasidharan<br>Vivek Nair<br><b>CSS ABU DHABI</b><br>Renjith B Pillai<br>Midhun George<br>Amal Hareendran<br>Githesh T.K.<br>Rajneesh Radhakrishnan<br>Prakash Shetty<br>Fayaz Abdulla<br>Arun Kuriakose<br>Shijosh Kunjumon | HR Executive<br>Sr. Network Engineer<br>Network Engineer<br>General Manager<br>BDM<br>Sales Executive<br>Operations Executive<br>Coordinator<br>Branch Manager<br>Sales Manager<br>Asst. Manager- Ops & Cust. Service<br>Accountant<br>Sr. Sales Executive<br>Sr. Sales Executive<br>Sales Executive<br>Sales Executive<br>Sales Executive | dewya@cssdubai.com<br>biju@cssdubai.com<br>aruns@cssdubai.com<br>ssuku@csshomeward.com<br>rajesh@csshomeward.com<br>jesse@csshomeward.com<br>vinod@csshomeward.com<br>vivek@csshomeward.com<br>renjith@cssabudhabi.com<br>midhun@cssabudhabi.com<br>amal@cssabudhabi.com<br>githesh@cssabudhabi.com<br>rajneesh@cssabudhabi.com<br>prakash@cssabudhabi.com<br>fayaz@cssabudhabi.com<br>arunk@cssabudhabi.com<br>shijosh@cssabudhabi.com | Litty Abraham<br>Derick Livera<br>Supriya Shetty<br>Greeshma Nair<br>Diyala Nasser<br>Prajeesh Sivaprasad<br>Roshmer Farook<br><b>CSS BAHRAIN</b><br>Narayan R T<br>Bijesh PB<br>Shaz .P<br>Krishna Das<br>Salim Das<br>Vikas<br>Masooma<br>Sreedevi<br>Ani. T<br>Prathap Chandran<br><b>CORPORATE COMMUNICATIONS (GROUP)</b><br>Unnikrishnan G | Sales Coordinator<br>Sales Coordinator<br>Sales Coordinator<br>Sales Coordinator<br>Operations Supervisor<br>Operations & Transport Executive<br>Customs Clearance Clerk<br>General Manager<br>Sr. Sales Executive<br>Sales Executive<br>Operations Supervisor<br>CFS Operations<br>Sales Coordinator<br>Customer Service<br>Sales Coordinator<br>Customs Documentation<br>Accountant<br>Head- Corp. Communications | litty@cssabudhabi.com<br>derick@cssabudhabi.com<br>supriya@cssabudhabi.com<br>greeshma@cssabudhabi.com<br>diyala@cssabudhabi.com<br>prajeesh@cssabudhabi.com<br>roshmer@cssabudhabi.com<br>narayan@cslbahrain.com<br>bijesh@cslbahrain.com<br>shaz@cssbahrain.net<br>krishnadas@cslbahrain.com<br>salim@cslbahrain.com<br>vikas@cslbahrain.com<br>masooma@cslbahrain.com<br>sreedevi@cslbahrain.com<br>ani@cslbahrain.com<br>prathap@cslbahrain.com<br>unni@cssdubai.com |
|--|--|---|---|---|--|

## ASSOCIATES

### CONSOLIDATED SHIPPING SERVICES W.L.L. – KUWAIT

Suhair Commercial Centre, Opp. Sharq Fire Station, 1st Floor  
Al-Hilali Street, P.O. Box 12075, Shamiya 71651, Kuwait.  
Tel +965 2249 3957, +965 22493960  
Fax +965 2249 3956

Abdulrahman Amin  
Dean Landers

Gr. General Manager  
General Manager

abdulrahmanamin@csskuwait.com  
dean@csskuwait.com

### CONSOLIDATED SHIPPING SERVICES – MALDIVES

C/o GO Maldives, 66/17, 7th floor  
Cyprea building, Bouthakurufoanu Magu, Male, Republic of Maldives  
Tel : +960 330 7242 fax +960 332 3523

Goutham Gopal

Business Development Executive

goutham@cssmale.com

### CONSOLIDATED SHIPPING SERVICES – PAKISTAN

Suite 208, Progressive Square 11-A, Block-6,  
PECHS, Shahrah-e-Faisal, Karachi-75400, Pakistan  
Tel: +9221-3437 1352 (3-Lines, Fax: +9221-3437 1230)

Asgar Malik

Country Manager

asghar@css-pk.com  
imports1@css-pk.com  
exports1@css-pk.com

### KINGDOM OF SAUDIA ARABIA

BARWIL AGENCIES LTD FOR SHIPPING (**WSS DAMMAM**)  
Post Box 293, Dammam, 31411, KSA  
Telephone : +966 3 833 9975, Fax : +966 3 833 3393

Mohammed Siraj  
Imtiaz Ali

Logistics Operations Manager  
Logistics Operations Supervisor

mohammed.siraj@wilhelmsen.com  
imtiaz.ali@wilhelmsen.com

BARWIL AGENCIES LTD FOR SHIPPING (**WSS RIYADH**)  
Post Box 21663, Riyadh, 11486, KSA  
Telephone : +966 1 477 3945, Fax : +966 1 477 4376

Mohammed Siraj  
Kunhammed Koya

Logistics Operations Manager  
Logistics Operations Supervisor

mohammed.siraj@wilhelmsen.com  
wss.riyadh.logistics@wilhelmsen.com

BINZAGR BARWIL MARINE TRANSPORT COMPANY LTD (**WSS JEDDAH**)  
Post Box 208, Jeddah, 21411, KSA  
Telephone : +966 2 6973343, Fax : +966 2 6971103

Tauheed Raza  
Omer Altaf

Logistics Operations Manager  
Logistics Operations Supervisor

tauheed.raza@wilhelmsen.com  
omer.altaf@wilhelmsen.com

### IFS DOHA

P.O. Box 5994, Doha, Qatar Tel: +974 446 67100  
Fax: +974 466 7400 Email: doha@inftrsvcs.com

Oliver Hahn

Regional Manager

oliver.hahn@inftrsvcs.com

### IFS MUSCAT

P.O. Box 2953, Ruwi 112, Sult. Of Oman Tel: +968 24 794100  
Fax: +968 24 795047 Email: Muscat@inftrsvcs.com

Vijay Kumar

Office Manager

vijay.kumar@inftrsvcs.com

### HINDUSTAN SHIPPING & CLEARING HOUSE

Ground Floor, CCHAA Building, Indira Gandhi Road,W/ Island,  
Cochin – 682009 Telefax: + 91 484 – 2667693/ 98

Latha Ashokan

Branch Manager

latha@cssindiagroup.com

## Indian Sub Continent

### Console Shipping Services India Pvt. Ltd. – Bangalore

Suite 305, III Floor, Sophia's Choice, No.7, St. Mark's Road, Bangalore - 560001  
Tel: +91 80 22133011, Fax: +91 80 42110133  
Email: mailblr@cssindiagroup.com

### Console Shipping Services India Pvt. Ltd. – Chennai

S.M.J Parry's Plaza  
4A, 4th Floor, Old No 12, New No 28  
2nd Lane Beach, Parrys  
Chennai-600 001  
Email: mailchennai@cssindiagroup.com

### Console Shipping Services India Pvt. Ltd. – Cochin

Ground Floor, CCHAA Building, Indira Gandhi Road,  
W / Island, Cochin – 682009  
Telefax: +91 484 2667693 / 2667698  
Email: mailcochin@cssindiagroup.com

### Console Shipping Services India Pvt. Ltd. – Coimbatore

No :1, Kondasamy Nagar, Masakalpalayam Main Road,  
Peelamedu,Near G.R.G. Signal, Coimbatore -641 004  
Tel No : + 91 422 4394142  
Email: vishwanath@cssindiagroup.com

### Console Shipping Services India Pvt. Ltd. – Delhi

A – 85, DDA Sheds, 2nd Floor, Okhla Industrial Area,  
Phase II, New Delhi - 110020  
Tel: +91 11 40589900, Fax: + 91 11 40589988  
Email: maildelhi@cssindiagroup.com

### Console Shipping Services India Pvt. Ltd. – Mumbai

Suite # 102, First Floor, Sai Samarth Building,  
Deonar, Mumbai - 400088  
Tel: +91 22 42212800, Fax: +91 22 42212899  
Email: mailmumbai@cssindiagroup.com

### Console Shipping Services India Pvt. Ltd. – Tirupur

49/24, NSP Building, Near Vinayagar Kovil, Ramnagar,  
Tirupur – 641602, Tamil Nadu  
Tel: +91 421 2236025, Fax: +91 421 4332347  
Email: mailtirupur@cssindiagroup.com

### Console Shipping Services India Pvt. Ltd. – Tuticorin

48 B/27, Pearl Plaza Building,  
Balavinayagar Kovil Street, Tuticorin – 628 002  
Tel No: +91 461 2338874  
Email: mailtuti@cssindiagroup.com



**WE OFFER** ♦ Worldwide packing and moving of personal effects ♦ Local and International removals (Homes and Offices)  
 ♦ Customs clearance and door to door service ♦ Warehousing ♦ Transportation ♦ Industrial packing and lashing  
 Comprehensive insurance ♦ Exhibitions & Events Logistics

# CSS Homeward Bound

RELOCATIONS • EXHIBITIONS & EVENTS • INDUSTRIAL PACKING • LASHING • CRATING

Dubai Creek Customs - Customs Wharfage  
 Warehouse B  
 P. O. Box 27802, Dubai, UAE  
 Tel: +971 4 2227780, Fax: +971 4 2223445  
 Email : info@csshomeward.com

Canadian Association of Movers (CAM)  
 International Association of Movers (IAM)  
 Asian Relocation Association (ARA)  
 & World Cargo Alliance Relocations (WCA)



A Division of The CSS Group