



[www.cssgroupsite.com](http://www.cssgroupsite.com)

MAY-JUNE 2012

# Lighthouse

Bi-monthly publication of CSS Group



**BREKBUK  
ANTWERP 2012**

**CMA CGM HONOURS CSS**

**EARTH HOUR**



# PROJECTS OIL & ENERGY



## **Consolidated Shipping Services L.L.C.**

P.O.Box 61334, Jebel Ali, Dubai, UAE  
Tel : +971-4-8872333, Fax: +971-4-8872335  
Email : [infoprojects@cssdubai.com](mailto:infoprojects@cssdubai.com)

[www.cssgroupsite.com](http://www.cssgroupsite.com)

[www.twininfosolutions.com](http://www.twininfosolutions.com)



MAY-JUNE 2012

# Lighthouse CONTENTS

CHAIRMAN'S MESSAGE



7



9



13



14

- 4 BREAKBULK ANTWERP
- 5 GPLN GLOBAL MEET
- 6 CSS VISITS NAOURI GROUP
- 7 DUBAI BOAT SHOW
- YACHT MOVEMENT
- 8 CERTIFICATE OF EXCELLENCE  
INTERMODAL SOUTH AMERICA
- 9 NEW ASSIGNMENT
- 10 PROJECTS @ CSS
- 11 CSS COCHIN
- 12 EMPLOYEES OF THE MONTH
- 13 AL NOOR FAMILY FUN FAIR
- 14 SPORTS @ CSS
- 15 EARTH HOUR
- 16 KALEIDOSCOPE
- 17 CSS INDIA CONTACTS
- 18 SAILING SCHEDULE
- 22 CSS MIDDLE EAST  
CONTACTS & ADDRESSES



T S Kaladharan

**"I Have a Dream"**, the 17-minute public speech, by Martin Luther King Jr., which was delivered on August 28th 1963, from the steps of the Lincoln Memorial during the March on Washington for Jobs and Freedom, has always been inspiring to me. It called for racial equality and an end to discrimination. The speech was a defining moment of the American Civil Rights Movement.

It is said that every idea starts as a dream and I have no doubt that dreams are a fillip in everyone's life. However there are those who just dream and others who also act on their dreams. This difference creates both world leaders as well as people who just queue up to buy lottery tickets as a gamble for their dreams.

The chances are that we fall somewhere between these extremes just "lounging around". But imagine what might happen if we stopped lounging and started acting on our dreams. I believe that dreamers can create a positive culture in any organisation. An employee who dreams, and is able to align their dreams, with a company's goals, results in both attaining success. If you look into any successful organisation, you can find leaders who encourage their employees to dream for success. Gone are those days where staffs are just managed. Now we need inspiration, similar to Martin Luther King Jr., to attain our corporate goals. It is this style of leadership which brings the creativity needed for success. CSS has been effective in encouraging our employees to dream and innovate. By promoting the further development of this culture we may all enjoy the feeling of being able to say, "I have a Dream" – a belief in a defining moment of excellence, both for ourselves and CSS, where all of us benefit equally together.



**Lighthouse**  
publication of CSS Group

FOR PRIVATE CIRCULATION ONLY

Lighthouse is produced by the CSS Group's Corporate Communications & Marketing Department  
Layout & Design : Twin info solutions Pvt. Ltd.  
For enquiries and suggestions:  
[communications@cssgroupsite.com](mailto:communications@cssgroupsite.com)  
Download Lighthouse online at [www.cssgroupsite.com](http://www.cssgroupsite.com)

# CSS GROUP ATTENDS BREAKBULK ANTWERP 2012

“The Breakbulk exhibitions have proven to be a success for the CSS Group and its network offices and we look forward to exhibiting in the Antwerp show. It is an excellent platform for industry professionals to network and gain valuable information from the conferences offered”

UBM Global Trade's 7th Annual Breakbulk Europe Transportation Conference and Exhibition will take place May 22nd -24th at the Antwerp Expo in Belgium and will address anticipated industry growth from emerging markets. The program features two days of panel and keynote discussions and as well as workshops and networking events within the heavy-lift and breakbulk transportation sector.

CSS Group will have a strong presence at the Breakbulk Exhibition led by a delegation from the United Arab Emirates, Bahrain and India.

From CSS Dubai, Raj George, Senior Vice President-Ocean Freight, Siby Kurian, General Manager Sales & Marketing, Amith Horra, Marketing Manager and Deepu S Dev, Marketing coordinator will be in attendance.

From CSS Bahrain, Narayan Tagore, General Manager and from CSS India, Prabhakar Maniyan, Vice President-Projects will be representing their respective regions during the exhibition.

“The Breakbulk exhibitions have proven to be a success for the CSS Group and its

network offices and we look forward to exhibiting in the Antwerp show. It is an excellent platform for industry professionals to network and gain valuable information from the conferences offered,” added Raj George, Senior Vice President-Ocean Freight.

“Breakbulk is and an ideal exhibition for any logistics company to showcase its first class services and product offerings, not only from the Middle East, but worldwide. Year after year, we have witnessed the number of companies and visitors increase, which helps us to identify and target keys segments to grow our business,” said Narayan Tagore, General Manager, CSS Bahrain.

CSS India, Prabhakar Maniyan, Vice President-Projects added, “With the increase of international audiences, specifically sub continent exhibitors and visitors attending Breakbulk Antwerp, it is essential for us to exhibit as we are able to nurture our existing business relationships with overseas clientele along with generating new business that will in turn grow our market share, locally and internationally.”

Highlights from the recently released

agenda include discussions of technology issues for the industry, the growing complexity of risks and liabilities in cargo moves and the influence of other shipping sectors on the breakbulk market. In addition, the topic of so-called “giga-projects,” which are creating new challenges amid rising energy demand, will be explored in depth.

“Last year, the Breakbulk Europe conference grew to be our largest event in 2011 at 4,300-plus attendees. We are excited to host even more guests this year. The agenda for Breakbulk Europe 2012 will provide real insight into areas of major growth to even more people in our industry,” said Alli McEntyre, Breakbulk Vice President and Publisher.

UBM Global Trade's Breakbulk division organizes a trio of major conferences and exhibitions each year -- Breakbulk Europe, Breakbulk China and Breakbulk Americas. In addition, three two-day congresses will be added this year: Breakbulk Africa, Aug. 7-8 in Cape Town, South Africa; Breakbulk South America, Dec. 4-5 in Sao Paulo; and Breakbulk India, Nov. 20-21 in Mumbai.



# CSS GROUP ATTENDS GPLN GLOBAL MEETING AND POWER LOGISTICS CONFERENCE / EXHIBITION

**G**lobal Project Logistics Network (GPLN) will be conducting its 9th Annual General Meeting at the Marina Bay Sands Expo and Convention Center, Singapore, from May 9- 11, 2012.

Just ahead of the annual GPLN meeting in Singapore, GPLN has provided an excellent opportunity to combine the Annual Meeting event at the same venue with the Power Logistics Conference and Expo on May 7-8, 2012. From CSS Group, Amith Horra - Marketing Manager, Chandrakala - Asst.

Manager NVOCC and Amal Harendran - Coordinator, Projects, Oil & Energy department will be representing CSS Group at this Conference/Exhibition.

CSS Group is pleased to be an exclusive sponsor for the GPLN Annual Meeting Cocktail reception to be held in the evening of May 9th, 2012. Raj George, Senior Vice President Ocean Freight, CSS Group and Narayan RT, General Manager CSS Bahrain will be attending the GPLN Annual Meeting representing CSS Group.

## About GPLN Annual Meeting:

GPLN brings together project cargo experts and independent project logistics specialist companies from around the world, all of whom have an expert focus on project logistics. This global meeting will allow members the face-to-face contact with other GPLN partners whereby they will be able to efficiently build professional relationships in the most lasting and cost effective manner.



**Consolidated Shipping Services L.L.C.**  
Projects, Oil & Energy

Exclusive Sponsor  
Cocktail Reception  
GPLN Annual Meeting  
**2012** Singapore



The Key Contacts are:  
Mr. Raj George  
(Senior VP - Ocean Freight)  
[george@cssdubai.com](mailto:george@cssdubai.com)

Mr. Sreenath V  
(General Manager - Projects, Oil & Energy)  
[sreenath@cssdubai.com](mailto:sreenath@cssdubai.com)

P.O. Box 61334, Jebel Ali, UAE.  
Tel: +971 4 8872333, Fax: +971 4 8872335  
Email: [infoprojects@cssdubai.com](mailto:infoprojects@cssdubai.com), Website: [www.cssdubai.com](http://www.cssdubai.com)



# CSS GROUP RECENT VISIT TO NAOURI GROUP

“Our trip to Jordan to meet the Senior Management of Naouri Group was an excellent opportunity for both companies to meet and discuss ways in which we can grow our business together. The hospitality extended to us by Naouri Group was exceptional and I would like to take this opportunity to thank everyone involved”

Continuing to build upon its business relationship with the Naouri Group, CSS Group recently visited their offices in Jordan as part of its initiative to create and sustain a strong alliance as well as strategically position themselves to service the global market.

Raj George, Senior Vice President-Ocean Freight, Ken Dinnadge, Vice President-Business Development and Ahmad Fuad, Branch Manager- CSS Abu Dhabi led the CSS Group delegation during the course of their official trip, where they met with all of the major business heads- Senior Managements of the Naouri Group whereby everyone involved was able to network and determine key sectors of

business for both parties to heavily target and develop.

A focus in developing consolidation services to Iraqi clients through utilizing CSS assets and services to establish continuous services from Dubai and other global locations were discussed along with operational aspects and commercial sales/business development were discussed in detail.

“Our trip to Jordan to meet the Senior Management of Naouri Group was an excellent opportunity for both companies to meet and discuss ways in which we can grow our business together. The hospitality extended to us by Naouri Group was exceptional and I would like to take this

opportunity to thank everyone involved,” added Raj George, Senior Vice President-Ocean Freight.

“We want to convey the message that Iraq is now starting to open up for business which we believe is a unique opportunity for our global partners to participate in”, said Ken Dinnadge, Vice President-Business Development.

## ABOUT NAOURI GROUP

### Year of Establishment

Naouri Group was established in 1994 and today is a leading group of companies with its core businesses being in the fields of shipping and logistics, and travel & tourism.

## HEAD OFFICE

Amman -Jordan

## Number of companies

17 company

## Network of offices

51 offices in Jordan, Iraq and Syria

## Number of Employees

+ 650 employees

## SERVICES OFFERED:

### Shipping and Logistics

- Shipping
- Projects
- Customs Clearance
- Freight Forwarding
- Land Transport
- Cargo Inspection and Testing
- Packing and Removals
- Warehousing

a trusted companion for  
shipping and logistics



**FINIS**  
FUNCTIONALLY INTEGRATED SOLUTION

A fully integrated software,  
which can revolutionise your operations

### Modules include

- Finance and Fixed Assets
- WHIMS (Warehouse Inventory Management)
- HRMS
- Payroll
- Freight Forwarding
- General Module
- WEWMS (Web enabled warehouse management system)

### General features of the software include

- Facility to manage Multi company/ division or branch activities
- Portal enabled system
- Easy online help available with each module.
- Customisable theme settings
- Customizable reports
- Electronic authorization and document processing
- User/ Group level security features
- Transaction based audit trail
- Data transfer facility (EDI)
- Customizable parameters

www.twininfosolutions.com

# DUBAI BOAT SHOW 2012

## CSS GROUP & PETERS & MAY



The 20th annual edition of the Dubai International Boat Show took place at the prestigious Dubai International Marine Club from March 13-17th, 2012. Home to more than 430 boats, the show featured 20 superyachts and an astounding 33 premiers, including 9 world launches and 24 regional launches, highlighting the event's number one ranking in the Middle East as the leading destination for leisure marine trade and boating enthusiasts.

"The 20th anniversary of the Boat Show marked one of the region's great milestones within the leisure maritime sector and we highlighted this

achievement with our best show ever, from the record number of super yacht builders exhibiting, to amazing investment opportunities to secure optimum purchases on the full-range of boats and products on display, plus the spectacular entertainment and educational opportunities on offer. The boat show brings together the full range of marine offerings and is 'the' event on Dubai's social calendar which is not to be missed," said Trixee Loh, Senior Vice President, Dubai World Trade Centre, organiser of the event.

CSS Group and Peters & May exhibited its first class products and services in the Luxury Sup-

plies and Services Area of the Dubai International Boat Show, at stand number LSS-D3.

"This year's exhibition saw an increased number of traffic within the Luxury Supplies and Services Area. We welcomed quite a few visitors everyday and I was extremely impressed with the quality of leads and networking that took place at our booth," said Edward Morgan, Manager-Yacht & Marine Logistics CSS Group/Peters & May.

"The Dubai International Boat Show has not only maintained its position as an essential event for the region's leisure marine industry, over 20 years

it has become a vital gateway to the global boating market," he added.

Following last year's success, 2012 witnessed the return of the hugely popular Supercar Promenade where visitors were able to get behind the wheel of some of the world's fastest and most expensive cars - such as Bentley Continental Series 51, Mercedes-Benz SLS AMG, and Rolls-Royce Phantom Drophead Coupé - all of which could be purchased at the show and driven off the site.

The Dubai International Boat Show was open to trade visitors and the general public from 3pm to 9:30pm daily.

## YACHT MOVEMENT

The Yacht and Marine logistics division in CSS Abu Dhabi has recently executed a yacht shipment from Jebel Ali to Beirut. The Yacht AS 52 owned by Mr. Sami Kyriakos of length 15.5 meters, width 4.35 meters, which is roughly 350 CBM, was loaded into the vessel Atlant Trina at the Jebel Ali port. The entire operation

was executed under the supervision of Rosaline Nabil, Business Development Manager, CSS Abu Dhabi. CSS along with Peters and May over the years have become one of the leading and reputable partners in the Middle East, within the Yacht and Marine Logistics sector.



# CMA CGM CERTIFICATE OF EXCELLENCE



**Prinson George**, Deputy General Manager handing over the certificate of excellence to **T S Kaladharan**, Chairman CSS Group for the outstanding support to CMA CGM throughout the year 2011.

## INTERMODAL SOUTH AMERICA 2012

The 18th edition of Intermodal South America is the leading integrated exhibition and conference event for international trade, logistics, transport and cargo handling in Latin America.

This year as the largest event in the Americas for logistics, cargo transport and international trade, Intermodal South America is focused on offering three distinct benefits to its visitors and exhibitors: networking and relationship-building, technical knowledge exchange via high-quality, content-driven conferences, and the generation of new business opportunities.

The event offers over 500 exhibitors from all over the world, presenting new products, the latest equipment's and technology innovation and a vast conference program, providing the unique opportunity and experience for more than 50 thousand professionals.

Siby Kurian, General Manager Sales & Marketing CSS Group, represented CSS Group for Intermodal 2012 and said; "By having a presence at Intermodal for past number of years we are able to network and nurture business relationships with our business



associates from all continents. Intermodal is an excellent platform for logistic companies to showcase their first class products and service offerings to an international audience."

Intermodal South America- [2012] Venue: Transamerica Expo Center, Sao Paulo, Brazil Date: Apr 10, 2011 - Apr 12, 2012.



# NEW ASSIGNMENT WITH HOMEWARD BOUND



**M**assimilano Spina, VP Freight Forwarding has been given the additional responsibility of the relocations department, CSS Homeward Bound. CSS Homeward Bound was setup by CSS Group to meet the ever-growing demand of the relocations among the expatriate community. Now CSS Homeward bound is well equipped with an experienced and professional team capable of delivering substantial services in relocation of your offices, apartments or villas. Within a short span of time CSS Homeward Bound has been successful in a great number of relocations of households and offices



Massimilano Spina

within and outside the Emirates. The professionalism in which we carry out each job has certainly earned us the reputation of being among the top within the industry

“I am extremely delighted to take on the new challenge of overseeing all relocation activities for CSS Homeward Bound. The relocation’s industry is vast not only in the Middle East but worldwide as many expatriate professionals and organizations choose the Middle East as their home

base. I look forward to continually build upon the brand awareness of CSS Homeward Bound both locally and internationally”, added Max.

## THE SERVICES OFFERED

- Worldwide packing and moving of personal effects
- Local and International removals (Homes and Offices)
- Customs clearance and door to door service
- Warehousing
- Transportation
- Industrial packing and lashing
- Comprehensive insurance
- Special Events & Exhibitions



## THE FACILITIES / STRENGTHS

- Own warehouse facility
- Operating a fleet of own trucks
- Multilingual staff
- Well trained and experienced professionals

## CERTIFICATIONS AND ASSOCIATIONS

- A member of the Canadian Association of Movers (CAM)
- A member of International Association of Movers (IAM)
- A member of Asian Relocation Association (ARA)

## CSS Homeward Bound

### RELOCATION COMPANY

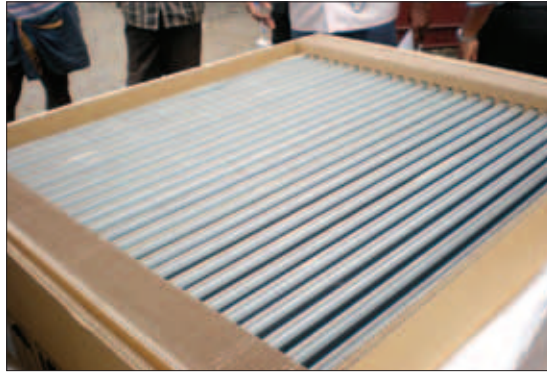
Services Offered: Worldwide packing and moving of personal effects ● Local and International removals (Homes and Offices) ● Customs clearance and door to door service ● Warehousing ● Transportation ● Industrial packing and lashing ● Comprehensive insurance

Dubai Creek Customs - Customs Wharfage  
Warehouse B, P.O. Box: 27802, Dubai, UAE  
Tel: +971 4 2227780, Fax: +971 4 2223445  
Email: info@csshomeward.com, Visit: www.csshomewardbound.com

A member of the Canadian Association of Movers (CAM)  
A member of International Association of Movers (IAM)  
A member of Asian Relocation Association (ARA)

# PROJECTS @ CSS

CSS Tirupur successfully handled and moved solar panels which are used for solar photovoltaic power plants at Nenmani village in Sattur, Tamil Nadu. The movement was carefully planned and executed by the professional projects team of Tirupur. These



solar panel movements were executed for Drake and Scull water and power LLC, Dubai, who were the clients. The consignment originated from Malaysia. There were 13,400 units of panels in 7 X 40 and 1 X 20 containers, which comprised of 268 boxes which were of 358.59 CBM. CSS did the entire local clearance procedures and transported the consignment to Sattur. The entire job was challenging and exciting as per the team at CSS Tirupur.



## DUBAI EXPORT MONITOR SHOWS CONTINUOUS GROWTH TREND

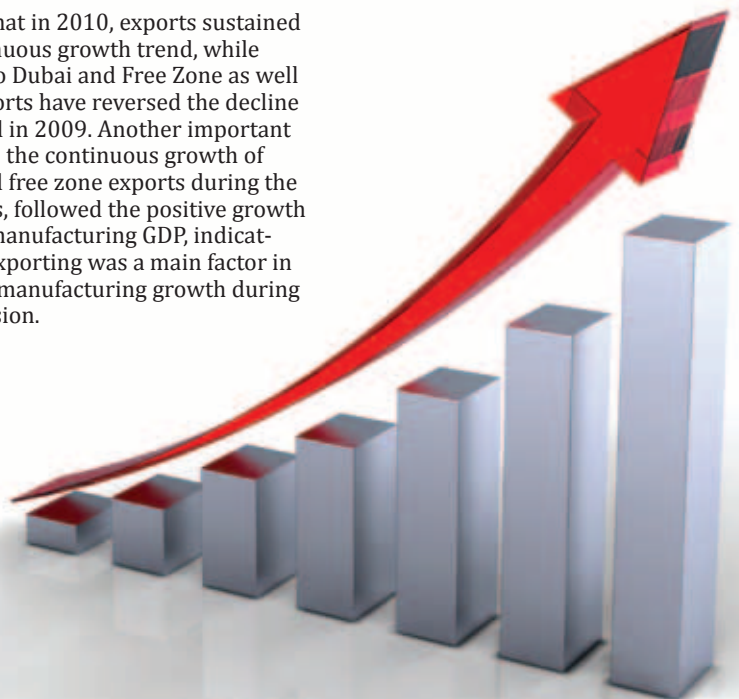
Exports continue to increase fostering growth in Dubai's manufacturing sector. South and West Asia are top destinations for Dubai products by value, according to Dubai Export Monitor – a yearly publication by the government.

Dubai Exports, an agency of the Department of Economic Development (DED), Government of Dubai, revealed that in 2010, the Emirate has been exporting diverse products, such as gold and precious metals, sugar, plastics and food, in various target export markets particularly in South and West Asia.

"This edition of Dubai Export Monitor report has been compiled to serve as a ready reference to various stakeholders in the four main areas of interest-overall trade trend, regional trade, trade by product and trade by market," said Saed Al Awadi, Chief Executive Officer, Dubai Exports.

An important conclusion of the report

showed that in 2010, exports sustained the continuous growth trend, while imports to Dubai and Free Zone as well as re-exports have reversed the decline witnessed in 2009. Another important trend was the continuous growth of direct and free zone exports during the past years, followed the positive growth trend of manufacturing GDP, indicating that exporting was a main factor in fostering manufacturing growth during the recession.



# GROWING LEAPS AND BOUNDS COCHIN WITH CSS



**K**ochi, with its world renowned port and the new Vallarpadam transshipment terminal gives an edge to the booming commercial aspect of this city. CSS takes the full advantage of being present in this historic and the fastest growing city of Cochin, which is regarded as the commercial hub of Kerala. This city could be considered as the second most important port city after Mumbai in the western coast.

Console Shipping Services, with a very strong presence in Kochi, is on its move to make it even stronger. Situated right next to the Port, CSS India is fully equipped with state of the art technology and an efficient manpower to cater its best of service to the clients. Console Shipping, being present in most of the major ports and cities in India, finds Kochi presence, a strategic one, foreseeing the

mammoth growth, Kochi has seen in the recent past.

The recent advancement in the projects sector and the relocation business, has paved a new path for the shipping and logistics fraternity for development. Due to various favorable factors, Kochi is becoming the hub of IT industry, which catapulted the real estate boom. The entry points of this city like the Shipping Port and Airport has fastened its pace to meet up with the sparkling requirements, the industry demands.

Cochin Port trust has taken measures to increase and modernize its facilities, with the support of a pro-active

management team and the support from the State and the Central Governments. The port has handled around 17 million tonnes of Cargo in the year 2010-11 period and is expected a steady growth in the years to come. New initiatives such as the International Container terminal, the International Marina and International ship repair complex could change the face of this port city of Kochi.

Cochin international airport, with a fame of being the first privately owned one, has announced 25,000 Sq. Mts of temperature controlled warehousing facilities for

perishable items with in its cargo village. Most of the International airlines are flying in and out of Cochin airport, which makes it now one of the busiest airports in South India.

Kochi, the business capital of Kerala, has long been an attraction for the international traveler. Kochi was popularly known as Cochin from the colonial days till recently. Its strategic importance over the centuries gave shelter to Arabs, British, Chinese, Dutch, and Portuguese sailors, all of whom have left indelible marks on the region's development.

# EMPLOYEES OF THE MONTH



FEBRUARY 2012

Suresh Sivadasan - Operations - (CSLC 1) given by Don Raveendran - Asst. Manager, Ocean Freight



Biju Vasudevan - Operations - CSS Logistics LLC (DAFZA) given by K Manish Kumar, Sr. Manager - Operations



MARCH 2012

Anuraj-NVOCC Dept (Head Office) given by Fida Asghar - Team Manager, NVOCC



Dhananjayan-Transport Dept (CSLC 1) given by Sudhir R - Transport Supervisor

## LUCKY WINNER



With our continuous view to uphold the freight-forwarding/logistics fraternity, CSS' Thank-you incentive scheme towards our fellow-forwarders and customers, conceived two years back, wherein one lucky name out of the scores of business cards that were dropped into the bowls that are placed at the D/O counter at the Corporate Office and CSLC-1, was to be picked up and rewarded with a gift, has been nothing short of successful.

The winner picked out and rewarded for the months of March- April 2012 was Inayat from Capricorn Logistics who walked away with Gift vouchers worth 200 AED from Carrefour, presented by Deepu S Dev, Marketing Coordinator, CSS Dubai.

# AL NOOR-FAMILY FUN FAIR 2012

Keeping in line with its continuous commitment to corporate social responsibility and giving back to society, CSS Group has lent support to the Al Noor Training Centre for Children with Special Needs by volunteering for the Al Noor-Samsung Family Fun Fair 2012, which took place at the Al Noor campus in Al Barsha, Dubai on Friday March 2nd, 2012 from 10am-10pm.

The Al Noor - Samsung Family Fun Fair was honored to have the Royal Patronage of His Highness Sheikh Ahmed Bin Dalmook Bin Juma Al Maktoum, and His Highness Sheikh Rashed Bin Dalmook Bin Juma Al Maktoum.

“The support and team work displayed by the CSS staff, family and friends was outstanding, their positive attitudes and excellent enthusiasm was highly appreciated and I would like to personally thank everyone involved and as well as Al Noor for organizing the Al Noor-Samsung Family Fun Fair 2012, and for allowing CSS to participate. We look forward to other events throughout the social calendar,”

Isphana Al Khatib, Director of Al Noor Training Centre for Children with Special Needs said, “as we do each year, we have carefully planned and organized the activities for the event with care to ensure the element of fun and entertainment for all ages prevails. With close to 1000 volunteers registering to help in the logistics, we look forward to another exciting and highly successful event.”

Over 50 CSS employees, family members and friends participated for this worthy cause by volunteering their time to help setup and facilitate for various booths, gaming areas, food counters and raffle stations throughout the event.

“The support and team work displayed by the CSS staff, family and friends was outstanding, their positive attitudes and excellent enthusiasm was highly appreciated and I would like to personally thank everyone involved and as well as Al Noor for organizing the Al Noor-Samsung Family Fun Fair 2012, and for allowing CSS to participate. We look forward to other events throughout the social calendar,” added Amith Horra, Marketing Manager, CSS.

The Al Noor Annual Fun Fair is the second fundraising event of the year that aims to raise a substantial amount of funds to cover a part of the running cost of the Centre and address the Centre's budget deficit. Al Noor Training Centre for Children with Special Needs has for the past 30 years been providing quality professional training to the special needs community of Dubai. They are a nonprofit organization and currently provide training to 270 children from 31 different nationalities with special needs.



# SCHENKER CRICKET TOURNAMENT



CSS Group has successfully secured another impressive tournament victory in the DB Schenker Inter Shipping Cricket tournament. CSS has been crowned the winners of this tournament for the second time, the first occurred in 2010 during the inaugural DB Schenker Cricket Tournament.

The final was played between CSS Group

and Globlink Westar. CSS defeated RHS Logistics in the Semi Finals and X-PRESS FEEDER in the Quarterfinals. CSS won the toss and elected to bowl in the finals. The bowlers got wickets in regular intervals and were backed up with splendid fielding which restricted the mighty Globlink Westar to a total of 44 for the loss of 9 wickets

in 8 overs. Chasing a modest total CSS Group emerged as the winner in the run chase with 3 overs to spare. CSS' Rowmahs bagged the Man of the Match title hitting 4 sixes and 1 four in finals and Atiq won the Man of the Series title for excellent performance throughout the tournament!

# UAE BADMINTON TOURNAMENT



The press conference for the 35th edition of the India Club - Western Union Money Transfer Tournament took place on April 15th, 2012 at the India Club, Dubai, UAE. Amith Horra, Marketing Manager and Deepu S Dev, Marketing Coordinator represented CSS Group who is the associate sponsor for the badminton tournament. The Tournament is scheduled to commence on Monday May 14th, 2012 at India Club, Dubai and the finals are scheduled for Friday, June 1, 2012.

To encourage the local talent, this year, the Tournament has been planned in two phases - The first phase is The UAE Open for players from UAE and GCC and the next phase is the Super League. As part of India Club's drive towards Corporate Social Responsibility (CSR), as in the previous years, they are planning to conduct matches for the Special Needs Children / Individuals under a separate pool. The categories will be based on the number of entries received. Invitations will be sent to various Special Needs Institutes in Dubai for participation in the same.

"It's been three in years in a row that CSS Group has been associated with this prestigious tournament as one of the prime sponsors and we feel honored to be part of one of this significant sporting event in the UAE," added Amith Horra, Marketing Manager, CSS.

# GIRLS BASKETBALL TEAM



Senior Girls Basketball Team: CSS Group recently sponsored the girls Basket Ball team from 'Our Own English High School', Al Warqa, Dubai, United Arab Emirates.



Consolidated Shipping Services

# EARTH HOUR @ CSS

The global community has come out in force for Earth Hour as social media has energized and inspired communities across the Middle East, Africa and Europe to unite for a common cause – the protection of the planet. From former war-torn countries to the great cities of Europe, Earth Hour is being celebrated by all walks of life as it offers an hour of inspiration to change our future to one that is sustainable.

Hundreds of people, including government officials, families, children and environmentalists gathered at the foot of the world's tallest tower, the Burj Khalifa. With candles and fluorescent lamps in their hands, young and old took part in the Earth

Walk. Under the patronage of Shaikh Hamdan Bin Mohammad Bin Rashid Al Maktoum, Crown Prince of Dubai and Chairman of Dubai Executive Council, the event was organised by the Dubai Electricity and Water Authority (Dewa) in association with the Emirates Wildlife Society-World Wide for Nature (EWS-WWF) and the Dubai Supreme Council of Energy (DSCE).

CSS Group Offices across the world joined hands for this noble cause and

switched of the lights and computers for one hour during their prescribed lunch hours making sure that it will not affect the operations whilst contributing to the Earth Hour. In addition, we reiterated that the importance of the Earth Hour is not just intended to turn off lights for one hour every year however; the initiative is intended to draw the attention of people and establishments so that they can work together for the benefit of themselves and the planet.





DAVE EAGER

## TIPS FOR ENTHRALLING TRAVELOGUES

**W**ould you be happy presenting a travelogue? 26-year-old British explorer Sarah Outen will no doubt have enthralling tales to tell as she should be currently sailing, alone, in her 22ft customised rowing boat from Japan to Canada.

But what about you and me?

Over the years I have developed my own tips to help ensure my travel stories are captivating but it is always good to remind oneself about them. They also may give you some useful ideas.

Just before my recent trip to Miami I realised that I had completely forgotten all about the bonus mile awards I had been collecting for years. I discovered that I had some 400,000 of them! My two week car hire and hotel stay in Miami only came to 50,000 bonus miles. Just think of the money saved. Tip one: Check what you've got!

Arriving into Miami airport I found that the system for collecting rental cars had completely changed since a year ago. Travellers are whisked, on a metro style train, to a purpose built complex where every local and international car hire name you may think of are represented. A new experience and probably bewildering for some so I took my "eagervision" camera, recorded and posted the information on YouTube. Tip two: If you come across something which may be helpful try to let others know.

The Florida Keys are a group of islands stretching from the Miami end of Florida down to the Key West, (key is another name for island), which is the southern most tip of USA. As I have visited them



many times I decided to stray off US 1 highway and explore the small hidden beaches. The local communities were delightful and very welcoming. At Key Colony Beach, near to the city of Marathon which is 76 miles south of Miami and 48 miles north of Key West, I found Sunset Park. There I made friends with Gucci a friendly small poodle - and I have the picture to prove it! This naturally led to being given a "doggie" invite to join Gucci's owners for a meal and learn more about life in the Florida Keys. Tip three: Try to get off the beaten track.

But a word of caution about Tip three leads us to Tip four: Remember to do your homework.

On one visit to Miami, having picked-up my hire car late in the night, I found myself driving around looking for a petrol station. Seeing a uniformed police officer I stopped and asked for directions. After being told, she said, "Do you really need to be in this area Sir?" I replied that I was looking to head south. "Well may I suggest that you get your gas and head down that

highway straight away". I found out later that I had inadvertently strayed into one of the less salubrious and dangerous areas of Miami.

El Salvador is only a two hour flight from Miami and, whilst it is somewhat Americanised, the contrast between the rich and the poor areas are demonstrably obvious.

I was there, under the auspices of Sweden's Jarl Hjalmarsen Foundation, to assist some political-type friends with media communication skills. Being cooked-up in a conference centre sometimes makes one detached from the real

world. Politics in El Salvador, like anywhere else in the world, generates high emotions. So imagine my delight when, whilst being driven round their capital city San Salvador, I saw some teenagers campaigning. This was grass roots stuff and an exciting opportunity to get a taste of the "real thing". I jumped out of the car and chatted with the enthusiastic group. Their commitment and dreams for the future of their country were inspirational. I was old enough to be their grandfather but there is no age limit for people to act as a catalyst in your life. Tip five: Be on the look-out to grasp opportunities. Our picture together is the stuff memories are made of as their party "Arena" won the national elections in March. A treasured souvenir for my collection.

So with five of my tips to start you off it's now up to you to personalise your own travel tips so you will have your own enthralling travelogues to relate. Maybe we should have a competition to choose your best travelogues - story with a picture?



# QUOTABLE QUOTES

*To accomplish great things we must dream as well as act*

*There is no adequate defence, except stupidity, against the impact of a new idea*

*Character may be manifested in the great moments, but it is made in the small ones*

*The secret to staying young is to live honestly, eat slowly, and lie about your age*

*Patience and time do more than strength or passion*

- Anatole France

- Percy Williams Bridgeman

- Phillip Brooks

- Lucille Ball

- Jean de la fontaine

## CONSOLE SHIPPING SERVICES INDIA PVT. LTD.

### DELHI

Rajesh Arora	Sr. General Manager	rajesharora@cssindiagroup.com
<b>Exports-Sales &amp; Marketing</b>		
Prasun Roy	Sr. Manager Export	prasun@cssindiagroup.com
Manish Kumar	Manager Export	manishkumar@cssindiagroup.com
Sunit Sharma	Deputy Manager	sunit@cssindiagroup.com
Arun Sarna	Asst. Manager	arunsarna@cssindiagroup.com
Rinku	Sr Executive	rinku@cssindiagroup.com
Sachin Sah	Sales Executive	sachinsah@cssindiagroup.com
Bairender	Executive	bairender@cssindiagroup.com
<b>Imports-Sales &amp; Marketing</b>		
Rajeev Kumar	Asst. Manager	rajeevkumar@cssindiagroup.com
Prabhakar Kumar	Asst. Manager	prabhakar@cssindiagroup.com
<b>Export Documentation, CRM &amp; Operation</b>		
Neeraj	Executive - docs	neeraj@cssindiagroup.com
Pradeep Singh Negi	Executive - docs	delhidocs@cssindiagroup.com
Divya Sabharwal	Ex. CRM	csdelhi@cssindiagroup.com
Sangeeta Negi	Jr Ex CRM	sangeetanegi@cssindiagroup.com
<b>Imports Documentation, CRM &amp; Operation</b>		
Kishan Dutt	Executive- Dox	kishan@cssindiagroup.com
Atul Jaiswal	Sr. Executive – Docs & CRM	atuljaiswal@cssindiagroup.com
Ekta Sawney	Executive -CRM	ekta@cssindiagroup.com
Gaurev Kumar	Executive- Dox	gaurev@cssindiagroup.com
Qasim Khan	Executive- Dox	qasimkhan@cssindiagroup.com
<b>Accounts</b>		
Sudeep V. Pillai	Manager-Accounts	sudeep@cssindiagroup.com
T. Nanda Kumar	Asst. Manager -Accounts	nandakumar@cssindiagroup.com
Dinesh Kumar	Trainee Accounts	dineshk@cssindiagroup.com
<b>MUMBAI</b>		
<b>Projects</b>		
Prabhakar Maniyan	Vice President	prabhakar@cssindiagroup.com
<b>Export Documentation</b>		
A K Swamy	Manager	akswamy@cssindiagroup.com
<b>Import / Airfreight Sales</b>		
Rahaf Talreja	General Manager	rahaf@cssindiagroup.com
<b>Customer Service Export</b>		
Ranjit Rahulan	Manager	ranjitrahulan@cssindiagroup.com
<b>Customer Service Import</b>		
Quresh Jawiwala	Manager	quresh@cssindiagroup.com
<b>Import Documentation</b>		
Sunny Mathew	Manager	sunny@cssindiagroup.com
Devdatt Adivarekar	Assistant Manager	devdatt@cssindiagroup.com

### Air Freight

Arshad Chogle	Executive Cust. Service	arshad@cssindiagroup.com
<b>Finance</b>		
R Krishnan	Manager Accounts	krishnan@cssindiagroup.com
<b>KOLKATA</b>		
Steeram Nair	Assistant General Manager	sreeram@cssindiagroup.com
Navrang Gandhi	Branch Manager	ngandhi@cssindiagroup.com
Arogya Das	Sales Executive	arghya@cssindiagroup.com
James mathew	Sales Executive	jamesmathew@cssindiagroup.com
S K Firoz	Sales Executive	firozsk@cssindiagroup.com
<b>Export Documentation</b>		
Sandip Basak	Executive	sandipb@cssindiagroup.com
<b>Import Documentation</b>		
Maneesh Vyas	Asst. Manager	maneesh@cssindiagroup.com
<b>Port Operations</b>		
Arun Das		arundas@cssindiagroup.com
<b>Customer Desk</b>		
Arpita Banarjee		arpita@cssindiagroup.com
<b>Finance</b>		
Sam Mathew	Accounts Executive	sammathew@cssindiagroup.com
<b>CHENNAI</b>		
Eugene A. Raj	Branch Manager	eugene@cssindiagroup.com
Sathiyarayanan	Accounts	sathiya@cssindiagroup.com
Jitendra	Cust.Service Import & Export	jitendra@cssindiagroup.com
Satish	Export Documentation	expdocschn@cssindiagroup.com
Prabhu S	Export Marketing	prabhus@cssindiagroup.com
<b>TIRUPUR</b>		
T K Viswanath	General Manager, S. India	Vishwanath@cssindiagroup.com
Thamby K Varghese	GM- Sales & Marketing, S. India	thamby@cssindiagroup.com
C Thainis Raj	Manager- Sales	ctr@cssindiagroup.com
Vinod. S	Branch Head	vinod@cssindiagroup.com
Geethanjali D	Executive- Accounts	geetha@cssindiagroup.com
<b>COIMBATORE</b>		
S K Gowthaman	Sr. Executive, Marketing & Sale	skgowthaman@cssindiagroup.com
<b>TUTICORIN</b>		
V Jeyakumar	Sr. Executive - Ops.	
S Manju	Exe. Cust. Care / Docs	manju@cssindiagroup.com
K Mutharasu	Exe. Operations	
<b>BANGALORE</b>		
Sandeep Anthur	Branch Manager	sandeepa@cssindiagroup.com
<b>COCHIN</b>		
Latha Ashokan	Branch Manager	latha@cssindiagroup.com
Reshmi M	Executive Accounts	accounts_cochin@cssindiagroup.com

# inbound

VESSEL	VOY	BAHRAIN	BANGKOK	BARCELONA	BREMEN	BUSAN	COCHIN	HONGKONG	KARACHI	KEELUNG	KUWAIT	NHAVA SHEVA	NEW YORK	NINGBO	PORT KLANG	ROTTERDAM	SHANGHAI	SINGAPORE	SOUTHAMPTON	XINGANG	YOKOHAMA	JEBEL ALI		
MAERSK WELLINGTON	1241	6-May																					9-May	
MAERSK WELLINGTON	1243	13-May																						16-May
MAERSK WELLINGTON	1245	20-May																						23-May
MAERSK WELLINGTON	1247	28-May																						30-May
MAERSK WELLINGTON	1249	3-Jun																						6-Jun
MAERSK WELLINGTON	1251	10-Jun																						13-Jun
MAERSK WELLINGTON	1253	17-Jun																						20-Jun
MAERSK WELLINGTON	1255	24-Jun																						27-Jun
APL TURKEY	227		6-May																					16-May
APL NORWAY	238		13-May																					23-May
APL IRELAND	249		20-May																					30-May
APL CALIFORNIA	257		27-May																					6-Jun
APL IOLITE	267		3-Jun																					13-Jun
APL HONG KONG	275		10-Jun																					20-Jun
APL OAKLAND	283		17-Jun																					27-Jun
XIN XIA MEN*	1222E			6-May																				23-May
XIN DA LIAN*	1223E			13-May																				30-May
XIN CHI WAN*	1222E			21-May																				7-Jun
AL RAWDAH*	1222E			31-May																				17-Jun
AL SAFAT	1222E			7-Jun																				24-Jun
XIN MEI ZHOU	1222E			14-Jun																				1-Jul
HAITA	1222E			21-Jun																				8-Jul
SOVEREIGN MAERSK	1205				13-May																			3-Jun
SINE MAERSK	1207				18-May																			10-Jun
TORRENTE	1207				28-May																			17-Jun
AXEL MAERSK	1207				4-Jun																			24-Jun
SOROE MAERSK	1207				11-Jun																			1-Jul
SVEND MAERSK	1207				18-Jun																			8-Jul
FRANKFURT EXPRESS	03E09																		3-May					25-May
TSINGTAO EXPRESS	34E11																		18-May					8-Jun
OSAKA EXPRESS	37E12																		25-May					15-Jun
NORTHERN JUBILEE	10E13																		1-May					22-May
SOFA EXPRESS	29E14																		8-Jun					8-Jun
KYOTO EXPRESS	28E15																		15-Jun					6-Jul
CHICAGO EXPRESS	12E16																		22-Jun					13-Jul
INDIRA GANDHI	172						4-May																	15-May
CARAVEL PRIDE	173						13-May																	24-May
LAL BAHADUR SASTRI	174						17-May																	28-May
RAJIV GANDHI	175						24-May																	4-Jun
INDIRA GANDHI	176						3-Jun																	14-Jun
CARAVEL PRIDE	177						9-Jun																	20-Jun
LAL BAHADUR SASTRI	178						16-Jun																	27-Jun
RAJIV GANDHI	179						26-Jun																	7-Jul
VIETNAM EXPRESS	36W52																							#REF!
OOCL CANADA	11W01																							#REF!
THAILAND EXPRESS	45W02																							#REF!
ITALY EXPRESS	29W03																							#REF!
OOCL HONG KONG	57W04																							#REF!
OOCL OAKLAND	39W51																							#REF!
OOCL KAOHSIUNG	58W49																							#REF!
OOCL SHANGHAI	29W50																							#REF!
APL HONG KONG	183						4-May																	16-May
APL IRELAND	184						18-May																	30-May
APL IOLITE	185						25-May																	6-Jun
APL NORWAY	186						1-May																	13-May
APL GARNET	187						8-Jun																	20-Jun
APL TURKEY	188						15-Jun																	27-Jun
APL PERU	189						22-Jun																	4-Jul
APL DENVER	187						29-Jun																	11-Jul
Santa Balbina	022E							1-May																4-May
OLIVA	022E							8-May																11-May
Santa Balbina	025E							15-May																18-May
LT TRIESTE	026E							22-May																25-May
HERMES	028E							29-May																1-Jun
OLIVA	022E							5-Jun																8-Jun
LT TRIESTE	023E							12-Jun																15-Jun
BRAVO	023E							19-Jun																22-Jun
HYUNDAI COLOMBO	610W								5-May															20-May
HYUNDAI FREEDOM	610W								12-May															27-May
HYUNDAI GENERAL	610W								19-May															3-Jun
HYUNDAI CONFIDENCE	030W								26-May															10-Jun
HYUNDAI FREEDOM	548W								2-Jun															17-Jun
HYUNDAI BANGKOK	045W								9-Jun															24-Jun
HYUNDAI HIGHNESS	521W								15-Jun															30-Jun
MAERSK CALIFORNIA	1330									4-May														6-May
MAERSK CALIFORNIA	1333									11-May														13-May
MAERSK CALIFORNIA	1336									18-May														20-May

ABOVE MENTIONED ARE TENTATIVE VESSELS AND ARE SUBJECT TO CHANGE.

# inbound

SAILING SCHEDULE

dubai

VESSEL	VOY	BAHRAIN	BANGKOK	BARCELONA	BREMEN	BUSAN	COCHIN	HONGKONG	KARACHI	KEELUNG	KUWAIT	NHAVA SHEVA	NEW YORK	NINGBO	PORT KLANG	ROTTERDAM	SHANGHAI	SINGAPORE	SOUTHAMPTON	XINGANG	YOKOHAMA	JEBEL ALI	
MAERSK CALIFORNIA	1339										25-May												27-May
MAERSK CALIFORNIA	1342										1-Jun												3-Jun
MAERSK CALIFORNIA	1345										8-Jun												10-Jun
MAERSK CALIFORNIA	1348										15-Jun												17-Jun
MAERSK CALIFORNIA	1351										22-Jun												24-Jun
NEDLOYD ASIA	1209											5-May											9-May
NORTHERN PIONEER	1209											12-May											16-May
CONTI SHANGHAI	1209											19-May											23-May
NEDLOYD OCEANIA	1208											26-May											30-May
NEDLOYD AMERICA	1208											2-Jun											6-Jun
NEDLOYD EUROPA	1208											9-Jun											13-Jun
CONTI SHANGHAI	1208											16-Jun											20-Jun
NEDLOYD ASIA	1208											23-Jun											27-Jun
GDURUN MAERSK	124N											8-May											26-May
GERD MAERSK	124N											15-May											2-Jun
MARCHEN MAERSK	124N											22-May											9-Jun
MAREN MAERSK	124N											29-May											16-Jun
GRETE MAERSK	124N											5-May											23-May
GJERTRUD MAERSK	124N											12-Jun											30-Jun
MARGRETHE MAERSK	125N											19-Jun											7-Jul
GDURUN MAERSK	125N											26-Jun											14-Jul
HYUNDAI FREEDOM	511W												3-May										20-May
HYUNDAI CONFIDENCE	511W												10-May										27-May
HYUNDAI HIGHNESS	511W												17-May										3-Jun
HYUNDAI BANGKOK	029W												24-May										10-Jun
HYUNDAI GENERAL	539W												31-May										17-Jun
HYUNDAI COLOMBO	047W												7-Jun										24-Jun
HYUNDAI FREEDOM	512W												14-Jun										1-Jul
COSCO KOREA	017W																5-May						22-May
OOCL EUROPE	045W																12-May						30-May
COSCO NAPOLI	044W																19-May						6-Jun
OOCL CANADA	008W																26-May						13-Jun
COSCO THAILAND	018W																2-Jun						20-Jun
OOCL BEIJING	011W																9-Jun						27-Jun
COSCO KOREA	016W																16-Jun						4-Jul
OOCL EUROPE	048W																23-Jun						11-Jul
CSCS URANUS	0007W																				7-May		2-Jun
CC DON CARLOS	GE691W																				14-May		9-Jun
TAYMA	1215W																				21-May		16-Jun
CSCS TBN1	TBA2																				28-May		24-Jun
UMM SALAL	1216W																				4-Jun		1-Jul
CSCS TBN 2	TBA4																				11-Jun		8-Jul
UNAYZAH	1217W																				18-Jun		15-Jul
CSCS URANUS	0004W																				25-Jun		22-Jul
WAN HAI 311	S084																					3-May	31-May
WAN HAI 303	S086																					10-May	7-Jun
WAN HAI 306	S132																					17-May	14-Jun
WAN HAI 311	S133																					24-May	21-Jun
WAN HAI 303	S073																					31-May	28-Jun
WAN HAI 306	S112																					7-Jun	5-Jul
WAN HAI 313	S079																					14-Jun	12-Jul
WAN HAI 311	S111																					21-Jun	21-Jan
BUNGA SEROJA SATU	260W														6-May								15-May
BUNGA RAYA LIMA	230W														13-May								22-May
BUNGA RAYA LAPAN	246W														20-May								29-May
BUNGA RAYA LAPAN	226W														27-May								5-Jun
BUNGA RAYA TIGA	270W														3-Jun								12-Jun
BUNGA RAYA SATU	240W														10-Jun								19-Jun
BUNGA SEROJA SATU	236W														17-Jun								26-Jun
BUNGA RAYA EMPAT	224W														24-Jun								3-Jul
MOL PRIORITY	78						5-May																24-May
APL DOHA	22						7-May											16-May					26-May
APL SEATTLE	55						17-May											28-May					5-Jun
OOCL JAKARTA	22						21-May											1-Jun					9-Jun
HYUNDAI NAVARINO	14						26-May											6-Jun					14-Jun
APL SRI LANKA	26						4-Jun											15-Jun					23-Jun
APL COLOMBIA	55						7-Jun											18-Jun					26-Jun
APL COLOMBIA	48						11-Jun											22-Jun					30-Jun
SVEND MAERSK	1207																1-May						24-May
SOROE MAERSK	1203																16-May						8-Jun
AXEL MAERSK	1207																23-May						15-Jun
MAERSK SOFIA	1207																30-May						22-Jun
TORRENTE	1207																6-Jun						29-Jun
SINE MAERSK	1207																13-Jun						6-Jul
SOVEREIGN MAERSK	1207																20-Jun						13-Jul
NEDLOYD HONSHU	1207																27-Jun						20-Jul

ABOVE MENTIONED ARE TENTATIVE VESSELS AND ARE SUBJECT TO CHANGE.

# outbound

VESSEL	VOY	JEBEL ALI	ABU DHABI	ADEN	ALEXANDRIA	AOABA	BAHRAIN	CHENNAI	COCHIN	COLOMBO	DAMMAM	DAR ES SALAM	DELHI	FELIXSTOWE	GENOA	HAMBURG	HODEIDAH	JEDDAH	KARACHI	KUWAIT	MOMBASA	MUSCAT	NEW YORK	NHAVA SHEVA	PORT SUDAN	RIYADH	ROTTERDAM	UMM QASR	SHANGHAI	SINGAPORE	
MAERSK KALMAR	22-Apr	3-May												26-May																	
MAERSK KLAIPEDA	22-Apr	10-May												2-Jun																	
MAERSK KIMI	22-Apr	17-May												9-Jun																	
MAERSK KIEL	22-Apr	24-May												16-Jun																	
MAERSK KAMPALA	22-Apr	31-May												23-Jun																	
MAERSK KYRENIA	24-Apr	7-Jun												30-Jun																	
MAERSK KITHIRA	22-Apr	14-Jun												7-Jul																	
MAERSK KALMAR	24-Apr	21-Jun												14-Jul																	
MAERSK KALMAR	22-Apr	28-Jun												21-Jul																	
APL ALEXANDRITE	15-Jun	1-May	2-May																												
APL TOPAZ	19-Jul	8-May	9-May																												
APL ZIRCON	11-Mar	15-May	16-May																												
APL SHENZHEN	9-Apr	22-May	23-May																												
APL ALEXANDRITE	16-Jun	29-May	30-May																												
APL TOPAZ	9-Mar	5-Jun	6-Jun																												
APL ZIRCON	12-Mar	12-Jun	13-Jun																												
APL SHENZHEN	10-Apr	19-Jun	20-Jun																												
APL ALEXANDRITE	15-Jun	3-May											17-May											7-May							
APL TOPAZ	19-Jul	10-May											24-May											14-May							
APL ZIRCON	11-Mar	15-May											29-May											19-May							
APL SHENZHEN	9-Apr	24-May											7-Jun											28-May							
APL ALEXANDRITE	16-Jun	31-May											14-Jun											4-Jun							
APL TOPAZ	20-Jul	7-Jun											21-Jun											11-Jun							
APL ZIRCON	12-Mar	14-Jun											28-Jun											18-Jun							
APL SHENZHEN	10-Apr	21-Jun											5-Jul											25-Jun							
MAERSK DENPASAR	17-Apr	1-May						14-May																							
MAERSK DARLINGTON	25-Apr	21-May						21-May																							
MAERSK DAVAO	19-Apr	15-May						28-May																							
MAERSK DARLINGTON	27-Apr	22-May						4-Jun																							
MAERSK DANANG	19-Apr	29-May						11-Jun																							
MAERSK DARLINGTON	29-Apr	5-Jun						18-Jun																							
MAERSK DUNEDIN	19-Apr	12-Jun						25-Jun																							
MAERSK DARLINGTON	17-Apr	19-Jun						2-Jul																							
APL ALEXANDRITE	17-Jun	3-May		18-May													20-May														
APL TOPAZ	19-Jul	10-May		25-May													27-May														
APL ZIRCON	17-Jul	17-May		1-Jun													3-Jun														
APL SHENZHEN	9-Apr	24-May		8-Jun													10-Jun														
APL ALEXANDRITE	16-Jun	31-May		13-Jun													17-Jun														
APL TOPAZ	20-Jul	7-Jun		22-Jun													24-Jun														
APL ZIRCON	12-Mar	14-Jun		29-Jun													1-Jul														
NYSTED MAERSK	22-Apr	4-May																							15-May						
MICHAELA S	20-Apr	11-May																							22-May						
NEXOE MAERSK	20-Apr	16-May																							27-May						
NORA MAERSK	22-Apr	25-May																							5-Jun						
NICOLAI MAERSK	24-Apr	1-Jun																							12-Jun						
NYSTED MAERSK	24-Apr	8-Jun																							19-Jun						
NICOLINE MAERSK	24-Apr	15-Jun																							26-Jun						
APL PRECISION	7-Jan	2-May					6-May																								
APL CALIFORNIA	13-Jan	9-May					13-May																								
MOL PROMISE	9-Mar	16-May					18-May																								
APL NEW JERSEY	14-Jan	23-May					25-May																								
APL TURKEY	19-Jan	30-May					1-Jun																								
APL PARADISE	9-Jan	13-Jun					15-Jun																								
APL AUSTRIA	21-Jan	20-Jun					22-Jun																								
APL CALIFORNIA	14-Jan	27-Jun					29-Jun																								
APL PRECISION	7-Jan	2-May									3-May																7-May				
APL CALIFORNIA	13-Jan	9-May									10-May																14-May				
MOL PROMISE	9-Mar	16-May									17-May																21-May				
APL NEW JERSEY	14-Jan	23-May									24-May																28-May				
APL TOKYO	19-Jan	30-May									31-May																4-Jun				
APL FLORIDA	15-Jan	6-Jun									7-Jun																11-Jun				
APL PARADISE	9-Jan	13-Jun									14-Jun																18-Jun				
APL AUSTRIA	21-Jan	20-Jun									21-Jun																25-Jun				
SAFMARINE NOKWANDA	26-Jul	4-May				24-May																									
MAERSK DUNCAN	27-Jul	11-May				31-May																									
MAERSK DANVILLE	28-Jul	18-May				7-Jun																									
MAERSK DABOU	16-Apr	25-May				14-Jun																									
LAUST MAERSK	17-Apr	1-Jun				21-Jun																									
MAERSK DUNBAR	20-Apr	8-Jun				28-Jun																									
LEDA MAERSK	21-Apr	15-Jun				5-Jul																									
LUNA MAERSK	22-Apr	22-Jun				12-Jul																									
AL FARAHIDI	1222W	3-May																													
AL FARAHIDI	1223W	10-May															2-Jun														
WINTER D	1224W	17-May														9-Jun															
HS BRUCKNER	1225W	24-May														16-Jun															
HS BRUCKNER	1226W	31-May														23-Jun															
WINTER D	1227W	7-Jun														30-Jun															
HS BRUCKNER	1228W	14-Jun														7-Jul															
ER ELSFLETH	17-Apr	2-May										18-May				14-Jul															



**TOP MANAGEMENT**

**CONTACTS**

<p>T S Kaladhara Anil Kumar Raj George Ahmed Al Rais</p>	<p>Chairman Director - Finance &amp; Admin Senior V P - Ocean Freight Senior V P - Airfreight</p>	<p>kala@cssdubai.com anil@cssdubai.com george@cssdubai.com ahmed@cssdubai.com</p>	<p>U B Prince Kenneth Allan Dinnadge Massimilano Spina Jaiaram K R</p>	<p>V P NVOCC Operations V P Business Development V P Freight Forwarding UAE Director- CSS India</p>	<p>prince@cssdubai.com ken@cssdubai.com mspina@cssdubai.com jaiaram@cssindiaigroup.com</p>
<p><b>SALES &amp; MARKETING</b> Siby C Kurian Amith Hora Deepu S Dev <b>SALES (DUBAI)</b> M Roshmon Manoli  Sharon Cunningham Deepak M.B Rahul Mathew Fazeena Mohammed Anoop Jose <b>SALES (TEAM JEBEL ALI)</b> Renjith B Pillai Renji V Mathew Vibin George Arun Jayakumar Sanjeev Kumar Sam Abraham Ashok Sankar Rashmi Praveen <b>SALES (NVOCC)</b> Fida Asghar Kiran Cherian Ranjith Haridas Robin Mathew Anuraj T C Sherin E Vincent Akriti Gurung Merlin Raj <b>HEAVY EQUIPMENT LOGISTICS / YACHT &amp; MARINE LOGISTICS</b> Kenneth Allan Dinnadge Edward Morgan  Nandakumar Kaveen Amarasinghe Alan Koshy Ratheesh Nair <b>FREIGHT FORWARDING / CSS HOMEWARD BOUND</b> Massimilano Spina Richard Varghese Raju Sudhakara Pandeti Kunal Wadhvani Arif Suleman Khatri Binitha D'Cunha Savita Vinod Ayu Riani <b>PRICING / KEY INFORMATION DESK</b> Raufa Shaikh Thomas Mathew Aparna Renjit Rishi R Prasad Neethu Saish Akhil Prabha</p>	<p>General Manager Marketing Manager Marketing Coordinator  Team/Route Dev. Manager (North America) Sr. Account Executive Sales Executive Key Account Manager Coordinator Coordinator  Team Manager Executive Sales Executive Sr. Coordinator Coordinator Coordinator Coordinator Coordinator  Team Manager Sales Executive Sales Executive Sales Coordinator Sales Coordinator Sales Coordinator Sales Coordinator Sales Coordinator VP Business Development Manager  Sr. Sales Coordinator Sales Executive Operations Executive Operations Executive  V P Freight Forwarding UAE Business Development Manager Business Development Manager Business Development Manager Coordinator Asst. Manager Sr. Coordinator Sales Executive  Manager Asst. Manager Team Leader Coordinator - Pricing Coordinator Coordinator</p>	<p>siby@cssdubai.com amith@cssdubai.com deepu@cssdubai.com  roshmon@cssdubai.com  sharon@cssdubai.com deepakmb@cssdubai.com rahulmathew@cssdubai.com fazeena@cssdubai.com anoop@cssdubai.com  renjith@cssdubai.com renji@cssdubai.com vibin@cssdubai.com arunjayakumar@cssdubai.com sanjeev@cssdubai.com sam@cssdubai.com ashoks@cssdubai.com rashmi@cssdubai.com  fida@cssdubai.com kiran@cssdubai.com ranjitharidas@cssdubai.com robin@cssdubai.com anuraj@cssdubai.com sherin@cssdubai.com akriti@cssdubai.com merlin@cssdubai.com  ken@cssdubai.com edward@cssdubai.com edward@petersandmay.com nandan@cssdubai.com kaveen@cssdubai.com alank@cssdubai.com ratheesh@cssdubai.com  mspina@cssdubai.com richard@cssdubai.com raju@cssdubai.com kunal@cssdubai.com arifs@cssdubai.com binitha@csshomeward.com savita@csshomeward.com ayu@csshomeward.com  raufa@cssdubai.com thomas@cssdubai.com aparnar@cssdubai.com rishi@cssdubai.com neethu@cssdubai.com akhil@cssdubai.com</p>	<p>Robin K G <b>AIR FREIGHT</b> Jacob Isaac Radhakrishnan (Babu) Baiju Sadanand Jeemon Thomas Pradeep T K Hari K R Prasanth Ajo Andrews <b>OCEAN FREIGHT &amp; CFS OPERATIONS</b> Angeli Sudeher Don Raveendran Chandrakala Vishnu Nazir Jayandan P I Rejinish Pradeep Kumar Sangeeth Jaison Sequeira <b>CUSTOMS DOCUMENTATION</b> Radhakrishnan (Babu) Rowmahs Ansar Ali Osama Amlia <b>CSLC-2 (SUPPLY CHAIN MANAGEMENT)</b> Hareesh M Haridas Sunil Kumar Abhinish S. Nisha Murali Biju Babu <b>PROJECTS, OIL &amp; ENERGY</b> Sreenath V Sony Mathew Sajith Vijayan Ambili P Hinna Hussain Swan Chacko Ahmed Talal Amal Hareendran Aravindan S Maria D'mello <b>LAND TRANSPORT</b> Sudhir R Sreekanth Pramod Kumar <b>FINANCE</b> Rajagopal S. Subhashini <b>HR &amp; ADMIN.</b> Susanth Shekar Shelly Varkey Cheryl Annes Hassan Haji Devya D</p>	<p>Coordinator  General Manager Sr. Manager - Ops Assistant Manager - Ops Sr. Operations Executive Operations Executive - Import Sales Coordinator Documentation Clerk CGV warehouse in-charge  Ops. Manager Asst. Manager Asst. Manager - NVOCC Ops. Team Leader - NVOCC Ops. Team Leader - CFS Ops. Sr. Ops Executive - LCL exports Sr. Ops Executive - Forwarding Team Leader (TR) LCL imports Operations Executive -IMCO Desk  Sr. Manager - Operations Team Leader Customs Documentation Customs Documentation  Manager - Logistics Warehouse Supervisor Coordinator - Logistics Coordinator - Sales Coordinator - Operations  General Manager Manager - Sales Manager - Ops. Team Leader Key Accounts Manager Operations Supervisor Sr. Operations Executive Coordinator Coordinator  Transport Supervisor Coordinator Coordinator  Sr. General Manager Credit Controller  Manager-HR Manager - Admin Exe. Secretary - Chairman's Office PRO HR Executive</p>	<p>robinkg@cssdubai.com  jacob@cssdubai.com babu@cssdubai.com baiju@cssdubai.com jeemon@cssdubai.com tpradeep@cssdubai.com harikr@cssdubai.com prasanth@cssdubai.com ajo@cssdubai.com  angeli@cssdubai.com don@cssdubai.com ckala@cssdubai.com vishnu@cssdubai.com jayandan@cssdubai.com rejinish@cssdubai.com pkumar@cssdubai.com sangeeth@cssdubai.com jaison@cssdubai.com  babu@cssdubai.com rowmahs@cssdubai.com ansar@cssdubai.com osama@cssdubai.com  hareesh@cssdubai.com sunil@fmcglogistics.net abhinish@fmcglogistics.net nisha@fmcglogistics.net opscslc2@fmcglogistics.net  sreenath@cssdubai.com sony@cssdubai.com sajithv@cssdubai.com ambilidon@cssdubai.com hinna@cssdubai.com chacko@cssdubai.com talal@cssdubai.com aravindan@cssdubai.com maia@cssdubai.com  sudhir@cssdubai.com sreekanth@cssdubai.com pramod@cssdubai.com  raj@cssdubai.com subhashini@cssdubai.com  susanth@cssdubai.com shelly@cssdubai.com cherylanne@cssdubai.com hassan@cssdubai.com devya@cssdubai.com</p>

**Middle East**

**Consolidated Shipping Services L.L.C.**

Corporate Office, P.O. Box 27802, Dubai, UAE  
Tel: +971 4 3248884, Fax: +971 4 3249994  
Email: [info@cssdubai.com](mailto:info@cssdubai.com)  
  
Dubai International Airport Cargo Gateway (Dubai Cargo Village)  
P.O. Box 27802, Dubai, UAE  
Tel: +971 4 2826176, Fax: +971 4 2826179  
Email: [info@cssdubai.com](mailto:info@cssdubai.com)

**Consolidated Shipping Logistics Centre 1- CFS**

P.O. Box 61334, Jebel Ali, Dubai, UAE  
Tel: +971 4 8872333, Fax: +971 4 8872335  
Email: [cfsoperations@cssdubai.com](mailto:cfsoperations@cssdubai.com)

**Consolidated Shipping Logistics Centre 2 - SCM**

P.O. Box 18595, Jebel Ali, Dubai, UAE  
Tel: +971 4 8873999, Fax: +971 4 8818696  
Email: [info@fmcglogistics.net](mailto:info@fmcglogistics.net)

**Consolidated Shipping Services L.L.C. Abu Dhabi**

P.O. Box 32454, Abu Dhabi, UAE  
Tel: +971 2 6431717, Fax: +971 2 6431919  
Email: [info@cssabudhabi.com](mailto:info@cssabudhabi.com)

**Consolidated Shipping Services W.L.L. Bahrain**

P.O. Box 2209, Manama, Bahrain  
Tel: +973 17540106, Fax: +973 17540107  
Email: [info@cslbahrain.com](mailto:info@cslbahrain.com)



**CSS Homeward Bound**  
Dubai Creek Customs - Customs Wharfage  
Warehouse B  
P. O. Box 27802, Dubai, UAE  
Tel: +971 4 2227780, Fax: +971 4 2223445  
Email: [info@csshomeward.com](mailto:info@csshomeward.com)



**CSS Logistics L.L.C.**  
P.O. Box 122258, Dubai, UAE  
LIU Warehouse I - 17, DAFZA - Dubai Airport Free Zone  
Tel: +971 4 2995353, Fax: +971 4 2995535  
Email: [info@csslogistics.net](mailto:info@csslogistics.net)

**CSS Logistics Jebel Ali**  
Warehouse no: RA08 WF02 (Blue Sheds)  
Near Roundabout 8, Jebel Ali Free Zone  
Tel: +971 4 8876111, Fax: +971 4 8876100  
Email: [info@csslogistics.net](mailto:info@csslogistics.net)

[www.cssgroupsite.com](http://www.cssgroupsite.com)

**INFORMATION TECHNOLOGY**

Biju Damodaran Arunkumar S <b>CSS ABU DHABI</b> Suku Suahakaran Ahmad Fuad Gillian Alexander Rosaline Nabil Rahul Radhakrishnan Roshan Basheer Rajneesh Radhakrishnan Prakash Shetty Diyala Nasser Pramod Gopalan Nair	Sr. Network Engineer Network Engineer  Asst. General Manager Branch Manager Manager - Ops. & Cust. Service Business Development Manager Sr. Coordinator - Sales Sr. Sales Executive Sales Executive Operations Supervisor Operations Executive	biju@cssdubai.com aruns@cssdubai.com  suku@cssabudhabi.com fuad@cssabudhabi.com gillian@cssabudhabi.com rosaline@cssabudhabi.com rahul@cssabudhabi.com roshan@cssabudhabi.com rajneesh@cssabudhabi.com prakash@cssabudhabi.com diyala@cssabudhabi.com pramod@cssabudhabi.com	Prajeesh Sivaprasad Githesh T K <b>CSS BAHRAIN</b> Narayan R T Rajesh N Bijesh P B Krishna Das Salim Das Vikas Masooma Anjali Ajay Prathap Chandran <b>CORPORATE COMMUNICATIONS (GROUP)</b> Unnikrishnan G	Transport Coordinator Accountant  General Manager Sr. Sales Executive Sales Executive Operations Supervisor CFS Operations Coordinator Customer Service Coordinator Accountant Head- Corp. Communications	prajeesh@cssabudhabi.com githesh@cssabudhabi.com  narayan@cslbahrain.com rajesh@cslbahrain.com bijesh@cslbahrain.com krishnadas@cslbahrain.com salim@cslbahrain.com vikas@cslbahrain.com masooma@cslbahrain.com anjali@cslbahrain.com prathap@cslbahrain.com unni@cssdubai.com
--	---	--	---	---	--

**ASSOCIATES****CONSOLIDATED SHIPPING SERVICES W.L.L. – KUWAIT**

C/o ADC Forwarding Services Co.W., 1st floor, Suhair Commercial Centre,  
Al Hilali Street, Opp. Sharq Fire Station  
P.O.Box 12075, Shamiya 71651, Kuwait  
Tel: +965 22493957, +965 22400176  
Fax: +965 22458892

Abdulrahman Amin  
Dean Landers  
Gr. General Manager  
General Manager  
abdulrahmanamin@csskuwait.com  
dean@csskuwait.com

**CONSOLIDATED SHIPPING SERVICES. – KSA**

P.O.Box :- 9580, **Dammam** - 31423  
Kingdom of Saudi Arabia  
Tel: + 966 3 8333636, Fax: +966 3 8320533

Henry  
Vishnu  
Achu / Attari  
docdmm@csssaudi.com  
importdmm@csssaudi.com  
mktgdmm@csssaudi.com

P.O.Box :- 14051, **Riyadh** - 11422  
Kingdom of Saudi Arabia  
Tel: +966 1 2063111, Fax: +966 1 2921260

Abdul Gafour  
Jithu  
Ismail  
docryd@csssaudi.com  
mktgryd@csssaudi.com  
importryd@csssaudi.com

P.O.Box :- 52143, **Jeddah** - 21563  
Kingdom Of Saudi Arabia  
Tel : +966 2 6427330, Fax : +966 2 6437220

Sheeras / Osman  
Vinoth  
Yseen  
importjed@csssaudi.com  
mktgjed@csssaudi.com  
docjed@csssaudi.com

**IFS DOHA**

P.O. Box 5994, Doha, Qatar Tel: +974 446 67100  
Fax: +974 466 7400 Email: doha@inftrsvcs.com

Oliver Hahn  
Regional Manager  
oliver.hahn@inftrsvcs.com

**IFS MUSCAT**

P.O. Box 2954, Ruwi 112, Sult. Of Oman Tel: +968 24 794100  
Fax: +968 24 795047 Email: Muscat@inftrsvcs.com

Vijay Kumar  
Office Manager  
vijay.kumar@inftrsvcs.com

**CSS LOGISTICS L.L.C.**

P.O. Box 122258 Dubai – U A E, LIU Warehouse 1 – 17, DAFZA  
Dubai Airport Free Zone  
Tel: +971 4 2995353, Fax: +971 4 2995353

Rakesh Menon  
Julian Sutich  
K Manish Kumar  
Kingsly Ravi  
Shijin Chandran  
Ebie babu  
Tiniil Markose  
Ruby Varkey  
Abhilash P  
Amith K R  
Ravi Takrar  
Sr. General Manager  
Business Dev. Manager  
Sr. Manager - Operations  
Business Dev. - Airfreight  
Key Account Manager  
Executive - Sales  
Sales Executive  
Operations Executive  
Accountant  
NVOCC Coordinator  
Sales Executive  
rakesh@csslogistics.net  
julian@csslogistics.net  
manishk@csslogistics.net  
kingsly@csslogistics.net  
shijin@csslogistics.net  
ebie@csslogistics.net  
tiniil@csslogistics.net  
ruby@csslogistics.net  
abhilashp@csslogistics.net  
amithkr@csslogistics.net  
ravi@csslogistics.net

**CSS LOGISTICS JEBEL ALI**

Warehouse no: RA08 WF02 (Blue Sheds)  
Near Roundabout 8, Jebel Ali Free Zone  
Tel: +971 4 8876111, Fax: +971 4 8876100

Qais Abdulla  
Arun P  
Branch Manager  
Team Leader - Operations  
qais@csslogistics.net  
arun@csslogistics.net

**HINDUSTAN SHIPPING & CLEARING HOUSE**

Ground Floor, CCHAA Building, Indira Gandhi Road, W/ Island,  
Cochin – 682009 Telefax: + 91 484 – 2667693/ 98

Latha Ashokan  
Branch Manager  
latha@cssindiagroup.com

**India****Console Shipping Services India Pvt. Ltd. – Bangalore**

Suite 305, III Floor, Sophia's Choice, No.7, St. Mark's Road, Bangalore - 560001  
Tel: +91 80 22133011, Fax: +91 80 42110133  
Email: mailblr@cssindiagroup.com

**Console Shipping Services India Pvt. Ltd. – Chennai**

S6, Brownnest Apartment, Old #73, New #38, 2nd Main Road, Gandhi Nagar  
Adyar, Chennai - 600 020, Tel: +91 44 24414511 / 12, Fax: +91 44 24414515  
Email: mailchennai@cssindiagroup.com

**Console Shipping Services India Pvt. Ltd. – Cochin**

Ground Floor, CCHAA Building, Indira Gandhi Road, W / Island, Cochin – 682009  
Telefax: +91 484 2667693 / 2667698  
Email: mailcochin@cssindiagroup.com

**Console Shipping Services India Pvt. Ltd. – Coimbatore**

No :1, Kondasamy Nagar, Masakalpalayam Main Road,  
Peelamedu, Near G.R.G. Signal, Coimbatore -4.  
Mob : 95009 70541  
Email: skgowthaman@cssindiagroup.com

**Console Shipping Services India Pvt. Ltd. – Delhi**

A – 85, DDA Sheds, 2nd Floor, Okhla Industrial Area,  
Phase II, New Delhi - 110020  
Tel: +91 11 40589900, Fax: + 91 11 40589988  
Email: maildelhi@cssindiagroup.com

**Console Shipping Services India Pvt. Ltd. – Kolkata**

37, Shakespeare Sarani, Level #4, SB TOWER  
Kolkata - 700017, India.  
Tel: +91 33 22870171, 22870169, 22870168, Fax: +91 33 22870177  
Email: mailkolkata@cssindiagroup.com

**Console Shipping Services India Pvt. Ltd. – Mumbai**

Suite # 102, First Floor, Sai Samarth Building,  
Deonar, Mumbai - 400088  
Tel: +91 22 42212800, Fax: +91 22 42212899  
Email: mailmumbai@cssindiagroup.com

**Console Shipping Services India Pvt. Ltd. – Tirupur**

49/24, NSP Building, Near Vinayagar Kovil, Ramnagar,  
Tirupur – 641602, Tamil Nadu  
Tel: +91 421 2236025, Fax: +91 421 4332347  
Email: mailtirupur@cssindiagroup.com

**Console Shipping Services India Pvt. Ltd. – Tuticorin**

48 B/27, Pearl Plaza Building,  
Balavinayagar Kovil Street, Tuticorin – 2  
Telefax: +91 461 2338874  
Email: mailtuti@cssindiagroup.com

# CSS Group

## Logistics Provider to all types of Construction Equipments

Local Knowledge with Global Expertise !



### Consolidated Shipping Services L.L.C.

P.O. Box 27802, Dubai, UAE.

Tel: +971 4 3248884, Ext: 212 & 122, Fax: +971 4 3249994

ship-heavy-equipment@cssdubai.com

[www.cssgroupsite.com](http://www.cssgroupsite.com)